



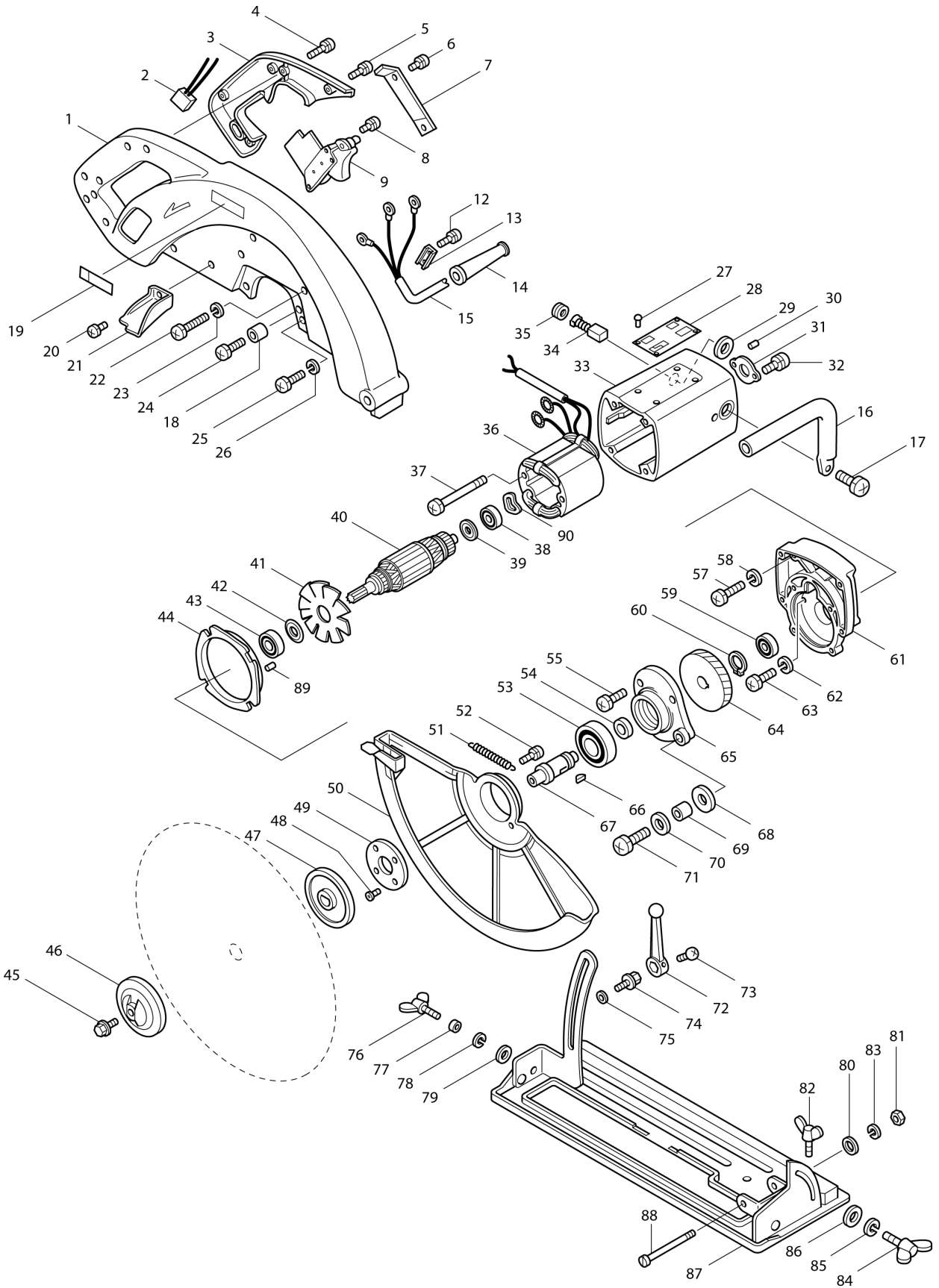
Diagram / Parts List

5402

CIRCULAR SAW 415MM



(TH) 5402 / CIRCULAR SAW 415MM



TH	THAILAND
----	----------

5402 / CIRCULAR SAW 415MM

Item	Sub	Parts No.	Parts Description	Qty	I/C	E/C No.	Close No.	Remark
001-1		312966-5	BLADE CASE	1	O	46372	DS155	
001-2		312G04-5	BLADE CASE	1	O	DS155		
003		312870-8	HANDLE COVER F/LOCK	1			DS155	
003-1		312F96-8	HANDLE COVER	1	O	DS155		
004		911151-3	PAN HEAD SCREW M4X28	1				
005		911126-2	PAN HEAD SCREW M4X16	3				
006		911106-8	PAN HEAD SCREW M4X8	2				
007		342488-1	LEAD COVER	1				
008		911106-8	PAN HEAD SCREW M4X8	2				
009-1		651016-4	SWITCH HPAHR2-2	1	O	55297		
010		911106-8	PAN HEAD SCREW M4X8	2		46372		
011		342487-3	PLATE	1		46372		
012		911116-5	PAN HEAD SCREW M4X12	2				
013		687600-9	STRAIN RELIEF	1				
014		682506-6	CORD GUARD 12-90	1				
015T1		691346-1	POWER SUPPLY CORD 1.25-3-5.0	1				
016		273602-7	GRIP	1				
017		911321-4	PAN HEAD SCREW M6X16	1				
018		257542-7	SLEEVE 7	1				
019		819003-1	MAKITA LABEL	1				
020		911106-8	PAN HEAD SCREW M4X8	1				
021		343292-1	CHIP GUIDE	1				
022		251273-0	+ PAN HEAD SCREW M6X30	2				
022-1		265064-3	+ PAN HEAD SCREW M6X30	2	O	54889		
023		942151-2	SPRING WASHER 6	2		54889		
024-1		911342-6	PAN HEAD SCREW M6X25	1				
025		251272-2	+ PAN HEAD SCREW M6X25	2				
025-1		251365-5	PAN HEAD SCREW M6X25	2	O	54889		
026		942151-2	SPRING WASHER 6	2		54889		
027-1		953106-2	RIVET 0-5	2			78579	
028		815030-6	NAME PLATE 5402	1			78579	
028-1		863644-5	NAME PLATE 5402	1	<	78579		
029		681002-1	INSULATION WASHER	2				
030		263005-3	RUBBER PIN 6	2				
031		285006-1	BEARING COVER 42	1				
032		911211-1	PAN HEAD SCREW M5X12	2				
033		156185-1	MOTOR HOUSING	1			78579	
	C10	643653-8	BRUSH HOLDER 6.5-13.5	2			78579	
	C20	913206-0	SET SCREW M5X8	2			78579	
	D10		INC. 30				78579	
033-1		156185-1	MOTOR HOUSING	1	<	78579	DS155	
	C10	643653-8	BRUSH HOLDER 6.5-13.5	2		78579	DS155	
	C20	913206-0	SET SCREW M5X8	2		78579	DS155	
	D10		INC. 30			78579	DS155	
033-2		141W93-7	MOTOR HOUSING COMPLETE	1	O	DS155		
	C10	643653-8	BRUSH HOLDER 6.5-13.5	2		DS155		
	C20	913206-0	SET SCREW M5X8	2		DS155		
	D10		INC. 30			DS155		
034A1		181044-0	CARBON BRUSH CB-153	1			85070	
034A2		B-80329	CARBON BRUSH SET CB-153A	1	<	85070		
035		643650-4	BRUSH HOLDER CAP 6.5-13.5	2			B0305	
035-1		643650-4	BRUSH HOLDER CAP 6.5-13.5	2	O	B0305		
036C		524075-0	FIELD ASS'Y 220V	1				220V
	C10	654020-2	RING TERMINAL	2				
	C20	654502-4	CONNECTOR P-2	2				
037-1		911938-3	PAN HEAD SCREW M5X85	2				
038		211066-7	BALL BEARING 6200LLB	1				
039		213051-6	DUST SEAL 10	1				
040C		514514-8	ARMATURE ASS'Y 220V	1			78316	220V
	D10		INC. 38,39,41-43				78316	
040C1		510093-4	ARMATURE ASS'Y 220V	1	S	78316		220V
	D10		INC. 38,39,41-43			78316		
041		241314-0	FAN 92	1				
042		213202-1	DUST SEAL 15	1			78316	
042-1		253147-1	FLAT WASHER 15	1	S	78316		

A:5402(H)

Interchange
O : Yes
X : No
< : the new part can be substituted for the current.
> : the current part can be substituted for the new.
S : Interchangeable as a set.

TH	THAILAND
----	----------

5402 / CIRCULAR SAW 415MM

Item	Sub	Parts No.	Parts Description	Qty	I/C	E/C No.	Close No.	Remark
043		211206-7	BALL BEARING 6202LLB	1			78316	
043-1		211228-7	BALL BEARING 6202DDW	1	S	78316		
044		343160-8	BAFFLE PLATE	1				
045		251644-1	HEX. FLANGE HEAD BOLT M8X20	1				
045-1		265408-7	HEX. SOCKET HEAD BOLT M8X20	1	X	52019		
046		224074-9	OUTER FLANGE 90	1				
047		224182-6	INNER FLANGE 90	1				
048		912116-8	COUNTERSUNK HEAD SCREW M4X12	4				
049-1		285822-1	BEARING RETAINER	1				
050-2		165218-1	SAFETY COVER	1	O	54539		
051		231733-8	TENSION SPRING 7	1				
052-1		911109-2	PAN HEAD SCREW M4X8	2				
053		211306-3	BALL BEARING 6204LLB	1				
054		257032-0	RING 20	1				
055		911241-2	PAN HEAD SCREW M5X25	4				
057		251208-1	+ PAN HEAD SCREW M5X35	2				
057-1		265063-5	+ PAN HEAD SCREW M5X35	2	O	54889		
058		942101-7	SPRING WASHER 5	2		54889		
059		211106-1	BALL BEARING 6201LLB	1				
060		961060-6	RETAINING RING S-20	1				
061		157034-5	GEAR HOUSING	1			DS155	
	D10		INC. 89				DS155	
061-1		141W97-9	GEAR HOUSING COMPLETE	1	O	DS155		
	D10		INC. 89			DS155		
062		942101-7	SPRING WASHER 5	2		54889		
063		251210-4	+ PAN HEAD SCREW M5X25	2				
063-1		265066-9	+ PAN HEAD SCREW M5X25	2	O	54889		
064		221623-3	HELICAL GEAR 73	1				
065-1		315774-3	GEAR HOUSING COVER	1			DS155	
065-2		312G09-5	GEAR HOUSING COVER	1	O	DS155		
066		254001-2	WOODRUFF KEY 4	1				
067		325212-7	SPINDLE	1				
068		262007-6	RUBBER RING 8	1				
069		257541-9	SLEEVE 8	1				
070		253022-1	FLAT WASHER 8	1				
071-1		911451-1	PAN HEAD SCREW M8X30	1				
072		133014-5	LEVER 98 ASS'Y	1				
	D10		INC. 73					
073		911207-2	PAN HEAD SCREW M5X10	1				
074		251612-4	HEX. BOLT M8X20	1				
075		941201-0	FLAT WASHER 8	1				
076		924336-2	WING BOLT M6X25	1				
077		257542-7	SLEEVE 7	1				
078		942151-2	SPRING WASHER 6	1				
079		253010-8	FLAT WASHER 6	1				
080		941201-0	FLAT WASHER 8	1			63707	
081		931401-0	HEX. NUT M8	1			63707	
081-1		252105-4	HEX. LOCK NUT M8-13	1	<	63707		
082		924316-8	WING BOLT M6X15	1				
083		942201-3	SPRING WASHER 8	1			63707	
084		924426-1	WING BOLT M8X20	1				
085		942201-3	SPRING WASHER 8	1				
086		253022-1	FLAT WASHER 8	1				
087-2		134290-4	BASE ASS'Y	1				
088		251405-9	- FLAT HEAD SCREW M8	1				
089		263005-3	RUBBER PIN 6	1				
090		253913-6	WAVE WASHER 20	1				
401		164019-4	GUIDE RULE	1			B3477	
401-1		164019-4	GUIDE RULE	1	O	B3477		
402		781011-1	WRENCH 22	1				
403-1		783204-6	HEX. WRENCH 6	1	X	52019		
404		410047-0	WRENCH HOLDER 5.6	1		52019		
900		267148-3	FLAT WASHER 23	1		78316		

A:5402(H)

Interchange
O : Yes
X : No
< : the new part can be substituted for the current.
> : the current part can be substituted for the new.
S : Interchangeable as a set.