



TH	THAILAND
----	----------

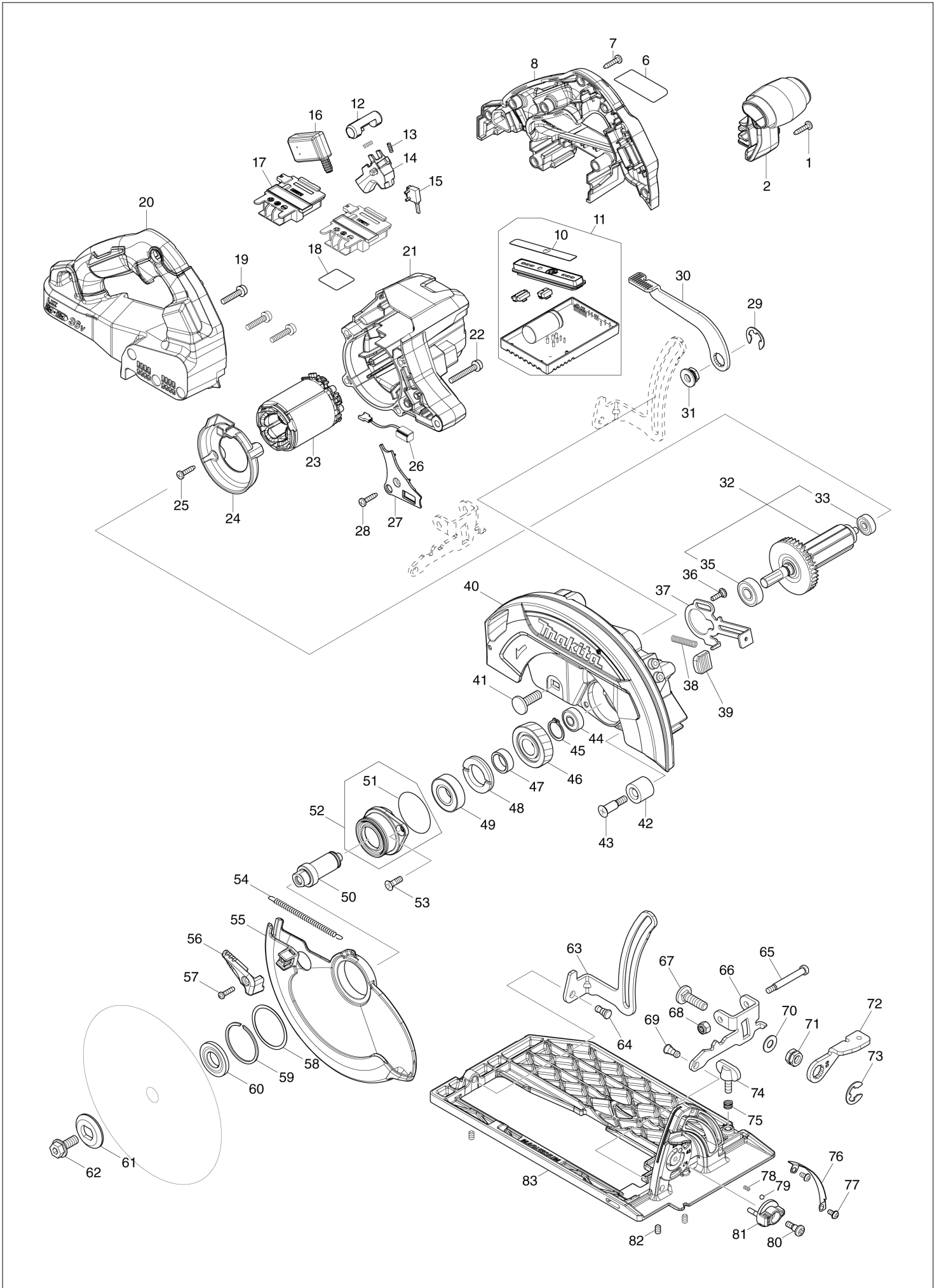
# Diagram / Parts List

**DHS780**

**185MM CORDLESS CIRCULAR SAW**



# (TH) DHS780 / 185MM CORDLESS CIRCULAR SAW



<b>TH</b>	<b>THAILAND</b>
-----------	-----------------

## DHS780 / 185MM CORDLESS CIRCULAR SAW

Item	Sub	Parts No.	Parts Description	Qty	I/C	E/C No.	Close No.	Remark
001		266326-2	TAPPING SCREW 4X18	1				
002		458750-5	FRONT GRIP	1				
006		854X94-9	DHS780 NAME PLATE	1				
007		266326-2	TAPPING SCREW 4X18	8				
008		183K51-5	HANDLE SET	1				
	C10	263005-3	RUBBER PIN 6	4				
	D10		INC. 20					
010		812G25-2	INDICATION LABEL	1				
011		620983-4	CONTROLLER COMPLETE	1			DJ067	
	D10		INC. 10				DJ067	
011-1		620L91-3	CONTROLLER COMPLETE	1	S	DJ067		
	D10		INC. 10			DJ067		
012		419704-7	LOCK OFF BUTTON	1				
013		231433-0	COMPRESSION SPRING 4	2				
014		458594-3	SWITCH LEVER	1				
015		632M92-5	SWITCH UNIT	1				
016		651083-9	SWITCH C3XA-1PSPM	1				
017		643874-2	TERMINAL	2				
018		854Y00-0	DHS780 SERIAL NO. LABEL	1				
019		911243-8	PAN HEAD SCREW M5X25	3				
020		183K51-5	HANDLE SET	1				
	C10	263005-3	RUBBER PIN 6	4				
	D10		INC. 8					
021		458746-6	MOTOR HOUSING	1				
022		911258-5	PAN HEAD SCREW M5X35	4				
023		629375-4	STATOR	1			DJ067	
023-1		629C02-1	STATOR	1	S	DJ067		
024		458749-0	BAFFLE PLATE	1				
025		266326-2	TAPPING SCREW 4X18	2				
026		620936-3	LED CIRCUIT	1				
027		458751-3	LIGHT COVER	1				
028		266326-2	TAPPING SCREW 4X18	1				
029		257953-6	BOW STOP RING E-12	1				
030		271447-7	LEVER 110	1				
031		252262-8	COLLERED HEX. NUT M8	1				
032		519534-7	ROTOR ASSY	1				
	D10		INC. 33,35					
033		210022-4	BALL BEARING 626DDW	1				
035		210059-1	BALL BEARING 6000DDW	1				
036		251529-1	+ PAN HEAD SCREW M4X14	1				
037		347441-2	SHAFT LOCK	1				
038		232381-6	COMPRESSION SPRING 6	1				
039		286039-9	CAP	1				
040		140F38-0	BLADE CASE COMPLETE	1				
	C10	213434-0	O RING 26	1				
	C20	818C46-8	SCALE LABEL	1				
041		266396-1	FLATHEAD SQUARENECKBOLT M8X24	1				
042		262185-2	RUBBER SLEEVE8	1				
043		251572-0	+ COUNTERSUNK HEAD SCREW M6X3	1				
044		210029-0	BALL BEARING 608ZZ	1				
045		961057-5	RETAINING RING S-17	1				
046		226838-7	HELICAL GEAR 37	1				
047		257451-0	RING 17	1				
048		285809-3	BEARING RETAINER 23-36	1				
049		210301-0	BALL BEARING 6003DDW	1				
050		327192-3	SPINDLE	1				
051		213565-5	O RING 42	1				
052		136021-7	BEARING BOX ASSY	1				
	D10		INC. 51					
053		265034-2	+ COUNTERSUNK HEAD SCREW M5X1	2				
054		232467-6	TENSION SPRING 4	1				
055		319740-2	SAFETY COVER	1				
056		271448-5	LEVER 37	1				
057		265178-8	PAN HEAD SCREW M4X16	1				
058		267337-0	FLAT WASHER 40	1				

A:DHS780Z(N)

Interchange  
 O : Yes  
 X : No  
 < : the new part can be substituted for the current.  
 > : the current part can be substituted for the new.  
 S : Interchangeable as a set.

