



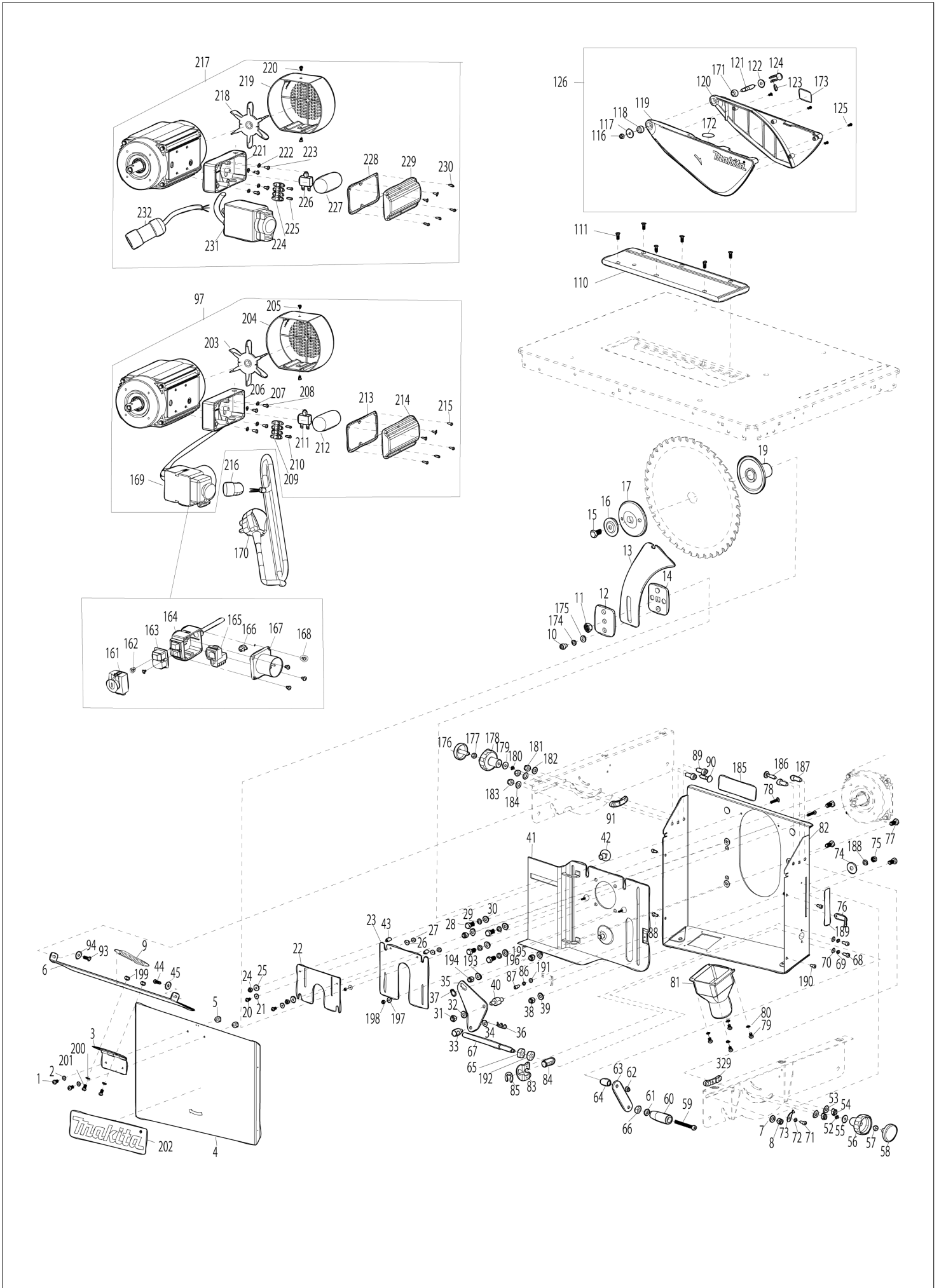
Diagram / Parts List

2712

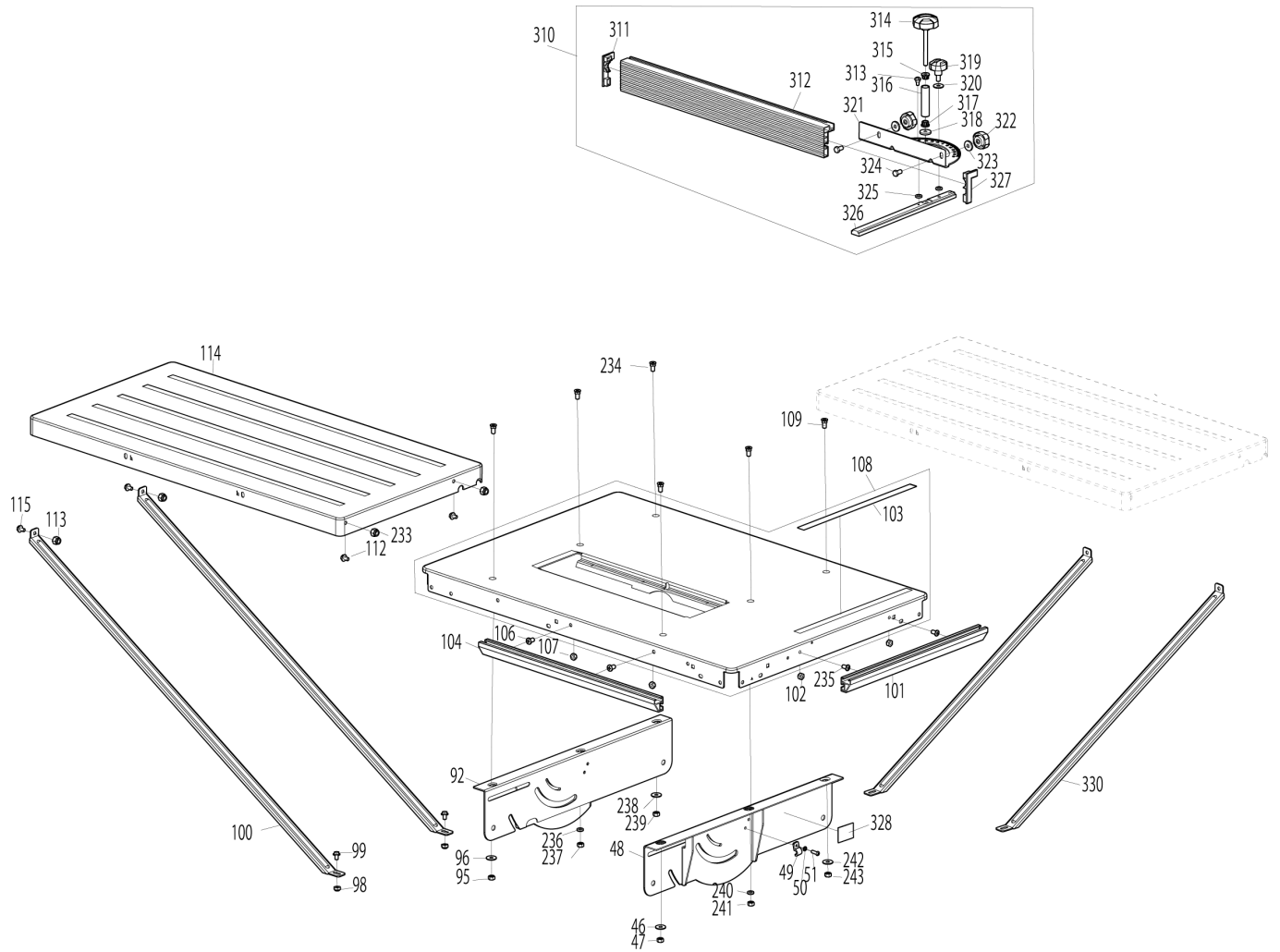
315MM TABLE SAW



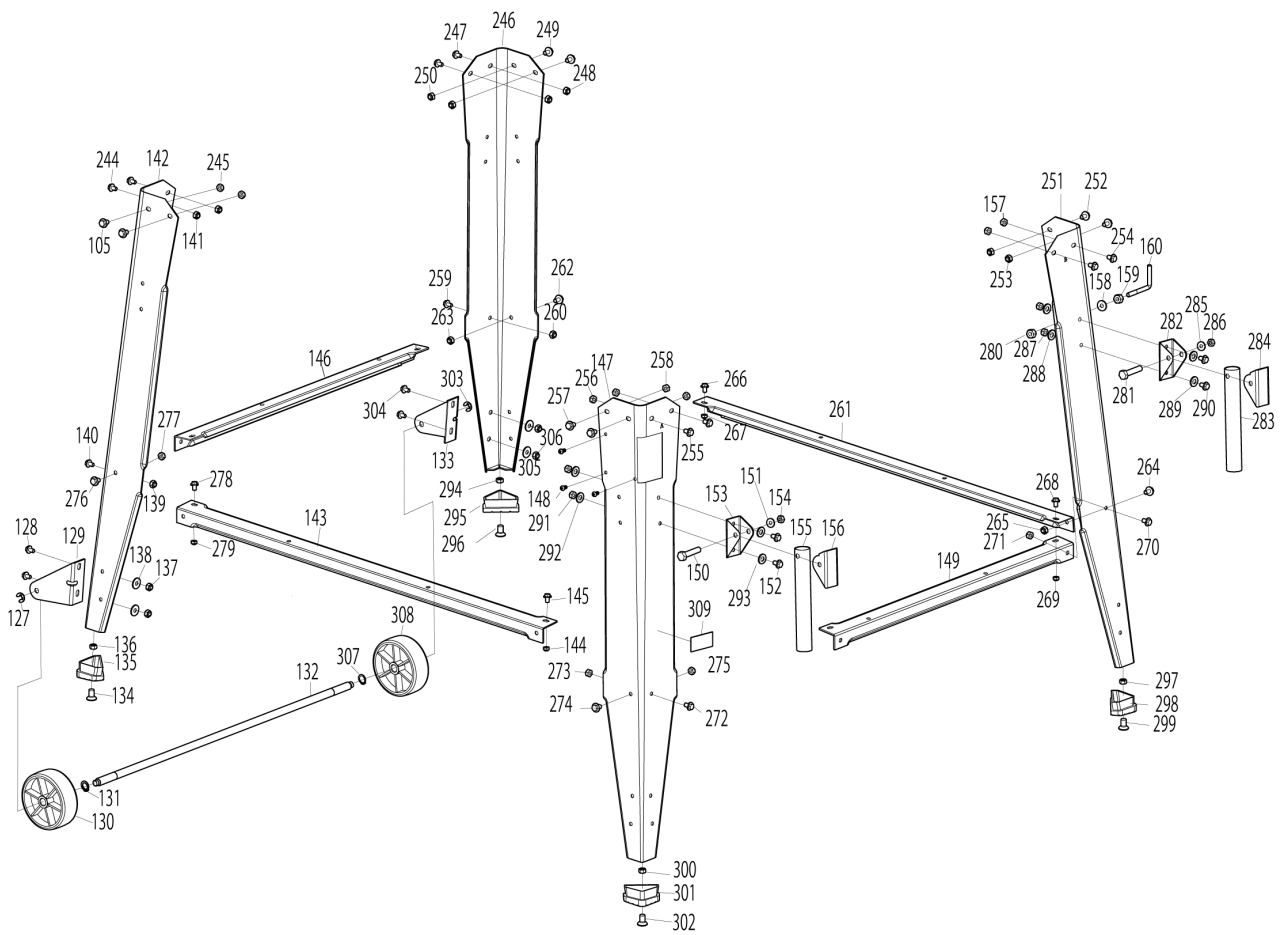
(TH) 2712 / 315MM TABLE SAW



(TH) 2712 / 315MM TABLE SAW



(TH) 2712 / 315MM TABLE SAW



TH	THAILAND
----	----------

2712 / 315MM TABLE SAW

Item	Sub	Parts No.	Parts Description	Qty	I/C	E/C No.	Close No.	Remark
001		JM27100031	PAN HEAD SCREW M5X10	2			Y08470	
001-1		JM27100031	PAN HEAD SCREW M5X10	2	O	Y08470		
002		JM27100032	FLAT WASHER 5	2				
003		JM27100033	HINGE	1				
004		JM27110001	BLADE CASE COVER	1			Y08470	
004-1		JM27110001	BLADE CASE COVER	1	O	Y08470		
005		JM27100111	HEX LOCK NUT M5	2			Y08470	
005-1		JM27100111	HEX LOCK NUT M5	2	O	Y08470		
006		JM27100035	FLAP PROTECTOR	1			Y08470	
006-1		JM27100035	FLAP PROTECTOR	1	O	Y08470		
007		JM27100132	FLAT WASHER 6 (L)	1				
008		JM27100016	HEX LOCK NUT M6	1			Y08470	
008-1		JM27100016	HEX LOCK NUT M6	1	O	Y08470		
009		JM27100036	TENSION SPRING	1			Y08470	
009-1		JM27100036	TENSION SPRING	1	O	Y08470		
010		JM27100104	HEX SOCKET HEAD BOLT M6X6	1			Y08470	
010-1		JM27100104	HEX SOCKET HEAD BOLT M6X6	1	O	Y08470		
011		JM27100037	HEX LOCK NUT M12	1			Y08470	
011-1		JM27100037	HEX LOCK NUT M12	1	O	Y08470		
012		JM27100038	RIVING KNIFE FIX PLATE OUTER	1			Y08470	
012-1		JM27100038	RIVING KNIFE FIX PLATE OUTER	1	O	Y08470		
013		JM27100039	RIVING KNIFE	1				
014		JM27100040	RIVING KNIFE FIX PLATE INNER	1			Y08470	
014-1		JM27100040	RIVING KNIFE FIX PLATE INNER	1	O	Y08470		
015		JM27100041	HEX FLANGE BOLT M10X20 LH	2			Y08545	
015-1		JM27100041	HEX FLANGE BOLT M10X20 LH	1	O	Y08545	Y08470	
015-2		JM27100041	HEX FLANGE BOLT M10X20 LH	1	O	Y08470		
016		JM27100042	CLAMP WASHER 30	1			Y08470	
016-1		JM27100042	CLAMP WASHER 30	1	O	Y08470		
017		JM27100043	OUTER FLANGE 79	1			Y08470	
017-1		JM27100043	OUTER FLANGE 79	1	O	Y08470		
019		JM27100044	INNER FLANGE 79-30	1			Y08470	
019-1		JM27100044	INNER FLANGE 79-30	1	O	Y08470		
020		JM27100047	PAN HEAD SCREW M4X12	2			Y08470	
020-1		JM27100047	PAN HEAD SCREW M4X12	2	O	Y08470		
021		JM27100046	FLAT WASHER 4(L)	2			Y08470	
021-1		JM27100046	FLAT WASHER 4(L)	2	O	Y08470		
022		JM27100048	SIDE PROTECTION SMALL	1			Y08470	
022-1		JM27100048	SIDE PROTECTION SMALL	1	O	Y08470		
023		JM27100049	SIDE PROTECTION LARGE	1			Y08470	
023-1		JM27100049	SIDE PROTECTION LARGE	1	O	Y08470		
024		JM27100045	HEX LOCK NUT M4	2			Y08470	
024-1		JM27100045	HEX LOCK NUT M4	2	O	Y08470		
025		JM27100046	FLAT WASHER 4(L)	2			Y08470	
025-1		JM27100046	FLAT WASHER 4(L)	2	O	Y08470		
026		JM27100046	FLAT WASHER 4(L)	2			Y08470	
026-1		JM27100046	FLAT WASHER 4(L)	2	O	Y08470		
027		JM27100045	HEX LOCK NUT M4	2			Y08470	
027-1		JM27100045	HEX LOCK NUT M4	2	O	Y08470		
028		JM27100050	HEX BOLT M8X16	4			Y08470	
028-1		JM27100050	HEX BOLT M8X16	4	O	Y08470		
030		JM00000370	FLAT WASHER 8 (L)	4				
031		JM27100053	HEX LOCK NUT M8	1			Y08470	
031-1		JM27100053	HEX LOCK NUT M8	1	O	Y08470		
032		JM27100054	FLAT WASHER 8	1				
033		JM27100055	BLADE HEIGHT ADJUSTING NUT M10	1			Y08470	
033-1		JM27100055	BLADE HEIGHT ADJUSTING NUT M10	1	O	Y08470		
034		JM27100106	FLAT WASHER 8	1				
035		JM27100057	ADJUSTING PLATE	1				
036		JM27100056	R PIN 8	1			Y08470	
036-1		JM27100056	R PIN 8	1	O	Y08470		
037		JM27100025	RETAINING RING S-10	1			Y08470	
037-1		JM27100025	RETAINING RING S-10	1	O	Y08470		
038		JM27100053	HEX LOCK NUT M8	4			Y08470	
038-1		JM27100053	HEX LOCK NUT M8	4	O	Y08470		

A:

Interchange
O : Yes
X : No
< : the new part can be substituted for the current.
> : the current part can be substituted for the new.
S : Interchangeable as a set.

TH	THAILAND
-----------	-----------------

2712 / 315MM TABLE SAW

Item	Sub	Parts No.	Parts Description	Qty	I/C	E/C No.	Close No.	Remark
039		JM00000370	FLAT WASHER 8 (L)	4				
040		JM27100058	DOUBLE THREAD BOLT M8X14	1			Y08470	
040-1		JM27100058	DOUBLE THREAD BOLT M8X14	1	O	Y08470		
041		JM27100072	LIFTING FRAME	1				
042		JM27100073	SQUARE NECK BOLT M12X20	1			Y08470	
042-1		JM27100073	SQUARE NECK BOLT M12X20	1	O	Y08470		
043		JM27100059	SLEEVE 7X4X13	2			Y08470	
043-1		JM27100059	SLEEVE 7X4X13	2	O	Y08470		
044		JM27100011	HEX BOLT M6X12	1			Y08470	
044-1		JM27100011	HEX BOLT M6X12	1	O	Y08470		
045		JM27100132	FLAT WASHER 6 (L)	1				
046		JM27100132	FLAT WASHER 6 (L)	1				
047		JM27100016	HEX LOCK NUT M6	1			Y08470	
047-1		JM27100016	HEX LOCK NUT M6	1	O	Y08470		
048		JM27100080	ANGLE SUPPORT PLATE FRONT	1			Y08470	
048-1		JM27100080	ANGLE SUPPORT PLATE FRONT	1	O	Y08470		
049		JM27100078	CORD CLAMP	1				
050		JM27100032	FLAT WASHER 5	1				
051		JM27100031	PAN HEAD SCREW M5X10	1			Y08470	
051-1		JM27100031	PAN HEAD SCREW M5X10	1	O	Y08470		
052		JM27100079	E SHAPE RETAINING RING 4	1			Y08470	
052-1		JM27100079	E SHAPE RETAINING RING 4	1	O	Y08470		
053		JM00000370	FLAT WASHER 8 (L)	2				
054		JM27100053	HEX LOCK NUT M8	2			Y08470	
054-1		JM27100053	HEX LOCK NUT M8	2	O	Y08470		
055		JM27100132	FLAT WASHER 6 (L)	1				
056		JM27100077	KNOB	1				
057		JM27100108	HEX NUT M6	1				
058		JM27100076	KNOB CAP	1			Y08470	
058-1		JM27100076	KNOB CAP	1	O	Y08470		
059		JM27100066	HEX SOCKET HEAD BOLT M8X60	1			Y08470	
059-1		JM27100066	HEX SOCKET HEAD BOLT M8X60	1	O	Y08470		
060		JM27100067	CRANK GRIP	1			Y08470	
060-1		JM27100067	CRANK GRIP	1	O	Y08470	Y08537	
060-2		JM27100067	CRANK GRIP	1	O	Y08537		
061		JM27100054	FLAT WASHER 8	1				
062		JM27100016	HEX LOCK NUT M6	1			Y08470	
062-1		JM27100016	HEX LOCK NUT M6	1	O	Y08470		
063		JM27100068	CRANK LEVER	1			Y08470	
063-1		JM27100068	CRANK LEVER	1	O	Y08470		
064		JM27100069	SLEEVE 14X9X22	1			Y08470	
064-1		JM27100069	SLEEVE 14X9X22	1	O	Y08470		
065		JM27100070	HEX NUT M10	1				
066		JM27100020	HEX NUT M8	1				
067		JM27100071	LIFTING ADJUSTING ROD M10	1			Y08470	
067-1		JM27100071	LIFTING ADJUSTING ROD M10	1	O	Y08470		
068		JM27100109	HEX SOCKET HEAD BOLT M5X10	2			Y08470	
068-1		JM27100109	HEX SOCKET HEAD BOLT M5X10	2	O	Y08470		
069		JM27100065	SPRING WASHER 5	2				
070		JM27100032	FLAT WASHER 5	2				
071		JM27100109	HEX SOCKET HEAD BOLT M5X10	1			Y08470	
071-1		JM27100109	HEX SOCKET HEAD BOLT M5X10	1	O	Y08470		
072		JM27100065	SPRING WASHER 5	1				
073		JM27100082	POINTER (BLADE ANGLE)	1			Y08470	
073-1		JM27100082	POINTER (BLADE ANGLE)	1	O	Y08470		
074		JM27100054	FLAT WASHER 8	1				
075		JM27100020	HEX NUT M8	1				
076		JM27100083	POINTER (BLADE HEIGHT)	1			Y08470	
076-1		JM27100083	POINTER (BLADE HEIGHT)	1	O	Y08470		
077		JM27100050	HEX BOLT M8X16	4			Y08470	
077-1		JM27100050	HEX BOLT M8X16	4	O	Y08470		
078		JM27100107	PAN HEAD SCREW M4X25	2			Y08470	
078-1		JM27100107	PAN HEAD SCREW M4X25	2	O	Y08470		
079		JM27100031	PAN HEAD SCREW M5X10	4			Y08470	
079-1		JM27100031	PAN HEAD SCREW M5X10	4	O	Y08470		

A:

Interchange
 O : Yes
 X : No
 < : the new part can be substituted for the current.
 > : the current part can be substituted for the new.
 S : Interchangeable as a set.

TH	THAILAND
----	----------

2712 / 315MM TABLE SAW

Item	Sub	Parts No.	Parts Description	Qty	I/C	E/C No.	Close No.	Remark
080		JM27100032	FLAT WASHER 5	4				
081		JM27100063	DUST PORT	1				
082		JM27110002	BLADE CASE COMPLETE	1			Y08470	
082-1		JM27110002	BLADE CASE COMPLETE	1	O	Y08470		
083		JM27100062	PIVOT PIN SUPPORT	1			Y08470	
083-1		JM27100062	PIVOT PIN SUPPORT	1	O	Y08470		
084		JM27100061	BLADE HEIGHT ADJUST PIVOT PIN	1			Y08470	
084-1		JM27100061	BLADE HEIGHT ADJUST PIVOT PIN	1	O	Y08470		
085		JM27100060	E SHAPE RETAINING RING 12	1			Y08470	
085-1		JM27100060	E SHAPE RETAINING RING 12	1	O	Y08470		
086		JM27100065	SPRING WASHER 5	1				
087		JM27100109	HEX SOCKET HEAD BOLT M5X10	1			Y08470	
087-1		JM27100109	HEX SOCKET HEAD BOLT M5X10	1	O	Y08470		
088		JM27100110	HEX SOCKET HEAD BOLT M4X6	2			Y08470	
088-1		JM27100110	HEX SOCKET HEAD BOLT M4X6	2	O	Y08470		
089		JM27100074	SPECIAL HEX SOCKET BOLT M8X20	2			Y08470	
089-1		JM27100074	SPECIAL HEX SOCKET BOLT M8X20	2	O	Y08470		
090		JM27100075	SQUARE NECK BOLT M6X30	1			Y08470	
090-1		JM27100075	SQUARE NECK BOLT M6X30	1	O	Y08470		
091		JM27100081	SLIDING BLOCK	1				
092		JM27100084	ANGLE SUPPORT PLATE REAR	1			Y08470	
092-1		JM27100084	ANGLE SUPPORT PLATE REAR	1	O	Y08470		
093		JM27100011	HEX BOLT M6X12	1			Y08470	
093-1		JM27100011	HEX BOLT M6X12	1	O	Y08470		
094		JM27100132	FLAT WASHER 6 (L)	1				
095		JM27100016	HEX LOCK NUT M6	1			Y08470	
095-1		JM27100016	HEX LOCK NUT M6	1	O	Y08470		
096		JM27100132	FLAT WASHER 6 (L)	1				
097		JM27100157	MOTOR ASSY HV	1				
	D10		INC. 169,203-215					
098		JM27100016	HEX LOCK NUT M6	2			Y08470	
098-1		JM27100016	HEX LOCK NUT M6	2	O	Y08470		
099		JM27100131	HEX BOLT M6X12 W/FLAT WASHER	2			Y08470	
099-1		JM27100131	HEX BOLT M6X12 W/FLAT WASHER	2	O	Y08470		
100		JM27100089	SUPPORT ROD	2				
101		JM27100101	MITER GAUGE RAIL L=38CM	1			Y08470	
101-1		JM27100101	MITER GAUGE RAIL L=38CM	1	O	Y08470		
102		JM27100016	HEX LOCK NUT M6	2			Y08470	
102-1		JM27100016	HEX LOCK NUT M6	2	O	Y08470		
103		JM27100100	SCALE LABEL	1				
104		JM27100085	MITER GAUGE RAIL L=45CM	1			Y08470	
104-1		JM27100085	MITER GAUGE RAIL L=45CM	1	O	Y08470		
105		JM27100131	HEX BOLT M6X12 W/FLAT WASHER	2			Y08470	
105-1		JM27100131	HEX BOLT M6X12 W/FLAT WASHER	2	O	Y08470		
106		JM27100086	PAN H SQUARE NECK BOLT M6X12	2			Y08470	
106-1		JM27100086	PAN H SQUARE NECK BOLT M6X12	2	O	Y08470		
107		JM27100016	HEX LOCK NUT M6	2			Y08470	
107-1		JM27100016	HEX LOCK NUT M6	2	O	Y08470		
108		JM27110003	WORKING TABLE COMPLETE	1				
	D10		INC. 103					
109		JM27100087	FLAT H SQUARE NECK BOLT M6X16	3			Y08470	
109-1		JM27100087	FLAT H SQUARE NECK BOLT M6X16	3	O	Y08470		
110		JM27100148	TABLE INSERT	1				
111		JM27100091	FLAT HEAD SCREW M5X16	6			Y08470	
111-1		JM27100091	FLAT HEAD SCREW M5X16	6	O	Y08470		
112		JM27100131	HEX BOLT M6X12 W/FLAT WASHER	2			Y08470	
112-1		JM27100131	HEX BOLT M6X12 W/FLAT WASHER	2	O	Y08470		
113		JM27100016	HEX LOCK NUT M6	2			Y08470	
113-1		JM27100016	HEX LOCK NUT M6	2	O	Y08470		
114		JM27100092	SIDE WORKING TABLE	1			Y08841	
114-1		JM00000412	SIDE WORKING TABLE	1	O	Y08841		
115		JM27100131	HEX BOLT M6X12 W/FLAT WASHER	2			Y08470	
115-1		JM27100131	HEX BOLT M6X12 W/FLAT WASHER	2	O	Y08470		
116		JM27100016	HEX LOCK NUT M6	1			Y08470	
116-1		JM27100016	HEX LOCK NUT M6	1	O	Y08470		

A:

Interchange
O : Yes
X : No
< : the new part can be substituted for the current.
> : the current part can be substituted for the new.
S : Interchangeable as a set.

TH	THAILAND
-----------	-----------------

2712 / 315MM TABLE SAW

Item	Sub	Parts No.	Parts Description	Qty	I/C	E/C No.	Close No.	Remark
117		JM27100093	FLAT WASHER 6 (XL)	1			Y08470	
117-1		JM27100093	FLAT WASHER 6 (XL)	1	O	Y08470		
118		JM27100094	SLEEVE 16X8X10	1			Y08470	
118-1		JM27100094	SLEEVE 16X8X10	1	O	Y08470		
119		JM27100095	LEFT GUARD	1				
120		JM27100096	RIGHT GUARD	1				
121		JM27100097	CONNECTING BOLT	1				
122		JM27100103	FLAT WASHER 8(L)	1			Y08470	
122-1		JM27100103	FLAT WASHER 8(L)	1	O	Y08470		
123		JM27100099	SPRING PIN 4X12	1			Y08470	
123-1		JM27100099	SPRING PIN 4X12	1	O	Y08470		
124		JM27100098	LOCK LEVER	1				
125		JM27100105	TAPPING SCREW ST3.9X9.5	4			Y08470	
125-1		JM27100105	TAPPING SCREW ST3.9X9.5	4	O	Y08470		
126		JM27110004	GUARD ASSEMBLY	1				
	D10		INC. 116-125, 171-173					
127		JM27100009	E SHAPE RETAINING RING 8	1			Y08470	
127-1		JM27100009	E SHAPE RETAINING RING 8	1	O	Y08470		
128		JM27100131	HEX BOLT M6X12 W/FLAT WASHER	2			Y08470	
128-1		JM27100131	HEX BOLT M6X12 W/FLAT WASHER	2	O	Y08470		
129		JM27100010	WHEEL BRACKET LEFT	1			Y08470	
129-1		JM27100010	WHEEL BRACKET LEFT	1	O	Y08470		
130		JM27100012	WHEEL	1				
131		JM27100102	RETAINING RING S-12	1			Y08470	
131-1		JM27100102	RETAINING RING S-12	1	O	Y08470		
132		JM27100013	WHEEL SHAFT	1				
133		JM27100014	WHEEL BRACKET RIGHT	1			Y08470	
133-1		JM27100014	WHEEL BRACKET RIGHT	1	O	Y08470		
134		JM27100022	FLAT HEAD SCREW M8X25	1			Y08470	
134-1		JM27100022	FLAT HEAD SCREW M8X25	1	O	Y08470		
135		JM27100021	SHOCK PAD	1				
136		JM27100020	HEX NUT M8	1				
137		JM27100016	HEX LOCK NUT M6	2			Y08470	
137-1		JM27100016	HEX LOCK NUT M6	2	O	Y08470		
138		JM27100018	FLAT WASHER 6	2				
139		JM27100016	HEX LOCK NUT M6	1			Y08470	
139-1		JM27100016	HEX LOCK NUT M6	1	O	Y08470		
140		JM27100131	HEX BOLT M6X12 W/FLAT WASHER	1			Y08470	
140-1		JM27100131	HEX BOLT M6X12 W/FLAT WASHER	1	O	Y08470		
141		JM27100016	HEX LOCK NUT M6	2			Y08470	
141-1		JM27100016	HEX LOCK NUT M6	2	O	Y08470		
142		JM27100015	LEG	1				
143		JM27100019	BEAM L=85CM	1				
144		JM27100016	HEX LOCK NUT M6	1			Y08470	
144-1		JM27100016	HEX LOCK NUT M6	1	O	Y08470		
145		JM27100131	HEX BOLT M6X12 W/FLAT WASHER	1			Y08470	
145-1		JM27100131	HEX BOLT M6X12 W/FLAT WASHER	1	O	Y08470		
146		JM27100017	BEAM L=60CM	1				
147		JM27100024	LEG A	1				
148		JM27100023	SELF TAPPING SCREW ST4X13	3			Y08470	
148-1		JM27100023	SELF TAPPING SCREW ST4X13	3	O	Y08470		
149		JM27100017	BEAM L=60CM	1				
150		JM27100029	HEX BOLT M8X45	1				
151		JM27100054	FLAT WASHER 8	1				
152		JM00000373	HEX BOLT M6X16	2				
153		JM27100028	HANDLE BRACKET I	1				
154		JM27100053	HEX LOCK NUT M8	1			Y08470	
154-1		JM27100053	HEX LOCK NUT M8	1	O	Y08470		
155		JM27100027	HANDLE	1				
156		JM27100026	HANDLE BRACKET II	1				
157		JM27100016	HEX LOCK NUT M6	2			Y08470	
157-1		JM27100016	HEX LOCK NUT M6	2	O	Y08470		
158		JM27100018	FLAT WASHER 6	1				
159		JM27100108	HEX NUT M6	1				
160		JM27100030	HOOK	1				

A:

Interchange
O : Yes
X : No
< : the new part can be substituted for the current.
> : the current part can be substituted for the new.
S : Interchangeable as a set.

TH	THAILAND
----	----------

2712 / 315MM TABLE SAW

Item	Sub	Parts No.	Parts Description	Qty	I/C	E/C No.	Close No.	Remark
169		JM27100112	SWITCH HV ASSEMBLY	1			Y08470	
169-1		JM27100112	SWITCH HV ASSEMBLY	1	O	Y08470		
170		JM27100007	POWER SUPPLY CORD 3P	1			Y08470	
170-1		JM27100007	POWER SUPPLY CORD 3P	1	O	Y08470		
171		JM27100094	SLEEVE 16X8X10	1				
172		JM2708B060	CAUTION LABEL	1				
173		JM27080108	LABEL(RIVING KNIFE SETTING)	1				
176		JM27100077	KNOB	1				
177		JM27100108	HEX NUT M6	1				
178		JM27100076	KNOB CAP	1				
179		JM27100132	FLAT WASHER 6 (L)	1				
180		JM27100079	E SHAPE RETAINING RING 4	1				
181		JM27100053	HEX LOCK NUT M8	2				
182		JM00000370	FLAT WASHER 8 (L)	2				
183		JM27100016	HEX LOCK NUT M6	1				
184		JM27100132	FLAT WASHER 6 (L)	1				
185		JM27180025	MAKITA LOGO LABEL	1				
186		JM27100075	SQUARE NECK BOLT M6X30	1				
187		JM27100074	SPECIAL HEX SOCKET BOLT M8X20	2				
188		JM27100051	SPRING WASHER 8	1				
189		JM00000361	SCALE LABEL (BLADE HEIGHT)	1				
190		JM27100110	HEX SOCKET HEAD BOLT M4X6	2				
191		JM27100032	FLAT WASHER 5	1				
192		JM27100070	HEX NUT M10	1				
193		JM00000370	FLAT WASHER 8 (L)	2				
194		JM27100053	HEX LOCK NUT M8	2				
195		JM00000370	FLAT WASHER 8 (L)	1				
196		JM27100053	HEX LOCK NUT M8	1				
197		JM27100046	FLAT WASHER 4(L)	2				
198		JM27100045	HEX LOCK NUT M4	2				
199		JM27100111	HEX LOCK NUT M5	2				
200		JM27100032	FLAT WASHER 5	2				
201		JM27100031	PAN HEAD SCREW M5X10	2				
202		JM27180024	MAKITA LOGO LABEL	1				
203		JM00000351	FAN	1				
204		JM00000352	FAN COVER	1				
205		JM00000353	FLAT HEAD SCREW M4X6	2				
206		JM00000354	TERMINAL BOX	1				
207		JM00000355	FLAT WASHER 4 (L)	4				
208		JM00000356	PAN HEAD SCREW M4X10	4				
209		JM00000371	TERMINAL BLOCK 4P	1				
210		JM00000372	SELF TAPPING SCREW ST3X14	2				
211		JM27100153	CIRCUIT BREAKER,HV	1				
212		JM27100159	CAPACITOR 20 MICRO F	1				
213		JM00000357	TERMINAL BOX GASKET	1				
214		JM00000358	TERMINAL BOX COVER	1				
215		JM00000359	TAPPING SCREW ST2.9X13	6				
216		JM27100144	PLUG	1				
233		JM27100016	HEX LOCK NUT M6	2				
234		JM27100087	FLAT H SQUARE NECK BOLT M6X16	3				
235		JM27100086	PAN H SQUARE NECK BOLT M6X12	2				
236		JM27100018	FLAT WASHER 6	1				
237		JM27100016	HEX LOCK NUT M6	1				
238		JM27100132	FLAT WASHER 6 (L)	1				
239		JM27100016	HEX LOCK NUT M6	1				
240		JM27100018	FLAT WASHER 6	1				
241		JM27100016	HEX LOCK NUT M6	1				
242		JM27100132	FLAT WASHER 6 (L)	1				
243		JM27100016	HEX LOCK NUT M6	1				
244		JM27100131	HEX BOLT M6X12 W/FLAT WASHER	2				
245		JM27100016	HEX LOCK NUT M6	2				
246		JM27100015	LEG	1				
247		JM27100131	HEX BOLT M6X12 W/FLAT WASHER	2				
248		JM27100016	HEX LOCK NUT M6	2				
249		JM27100131	HEX BOLT M6X12 W/FLAT WASHER	2				

A:

Interchange
O : Yes
X : No
< : the new part can be substituted for the current.
> : the current part can be substituted for the new.
S : Interchangeable as a set.

TH	THAILAND
----	----------

2712 / 315MM TABLE SAW

Item	Sub	Parts No.	Parts Description	Qty	I/C	E/C No.	Close No.	Remark
250		JM27100016	HEX LOCK NUT M6	2				
251		JM27100015	LEG	1				
252		JM27100131	HEX BOLT M6X12 W/FLAT WASHER	2				
253		JM27100016	HEX LOCK NUT M6	2				
254		JM27100131	HEX BOLT M6X12 W/FLAT WASHER	2				
255		JM27100131	HEX BOLT M6X12 W/FLAT WASHER	2				
256		JM27100016	HEX LOCK NUT M6	2				
257		JM27100131	HEX BOLT M6X12 W/FLAT WASHER	2				
258		JM27100016	HEX LOCK NUT M6	2				
259		JM27100131	HEX BOLT M6X12 W/FLAT WASHER	1				
260		JM27100016	HEX LOCK NUT M6	1				
261		JM27100019	BEAM L=85CM	1				
262		JM27100131	HEX BOLT M6X12 W/FLAT WASHER	1				
263		JM27100016	HEX LOCK NUT M6	1				
264		JM27100131	HEX BOLT M6X12 W/FLAT WASHER	1				
265		JM27100016	HEX LOCK NUT M6	1				
266		JM27100131	HEX BOLT M6X12 W/FLAT WASHER	1				
267		JM27100016	HEX LOCK NUT M6	1				
268		JM27100131	HEX BOLT M6X12 W/FLAT WASHER	1				
269		JM27100016	HEX LOCK NUT M6	1				
270		JM27100131	HEX BOLT M6X12 W/FLAT WASHER	1				
271		JM27100016	HEX LOCK NUT M6	1				
272		JM27100131	HEX BOLT M6X12 W/FLAT WASHER	1				
273		JM27100016	HEX LOCK NUT M6	1				
274		JM27100131	HEX BOLT M6X12 W/FLAT WASHER	1				
275		JM27100016	HEX LOCK NUT M6	1				
276		JM27100131	HEX BOLT M6X12 W/FLAT WASHER	1				
277		JM27100016	HEX LOCK NUT M6	1				
278		JM27100131	HEX BOLT M6X12 W/FLAT WASHER	1				
279		JM27100016	HEX LOCK NUT M6	1				
280		JM27100108	HEX NUT M6	1				
281		JM27100029	HEX BOLT M8X45	1				
282		JM27100028	HANDLE BRACKET I	1				
283		JM27100027	HANDLE	1				
284		JM27100026	HANDLE BRACKET II	1				
285		JM27100054	FLAT WASHER 8	1				
286		JM27100053	HEX LOCK NUT M8	1				
287		JM27100016	HEX LOCK NUT M6	2			Y08537	
287-1		JM27100108	HEX NUT M6	2	X	Y08537		
288		JM27100132	FLAT WASHER 6 (L)	2				
289		JM27100132	FLAT WASHER 6 (L)	2				
290		JM00000373	HEX BOLT M6X16	2				
291		JM27100016	HEX LOCK NUT M6	2			Y08537	
291-1		JM27100108	HEX NUT M6	2	X	Y08537		
292		JM27100132	FLAT WASHER 6 (L)	2				
293		JM27100132	FLAT WASHER 6 (L)	2				
294		JM27100020	HEX NUT M8	1				
295		JM27100021	SHOCK PAD	1				
296		JM27100022	FLAT HEAD SCREW M8X25	1				
297		JM27100020	HEX NUT M8	1				
298		JM27100021	SHOCK PAD	1				
299		JM27100022	FLAT HEAD SCREW M8X25	1				
300		JM27100020	HEX NUT M8	1				
301		JM27100021	SHOCK PAD	1				
302		JM27100022	FLAT HEAD SCREW M8X25	1				
303		JM27100009	E SHAPE RETAINING RING 8	1				
304		JM27100131	HEX BOLT M6X12 W/FLAT WASHER	2				
305		JM27100018	FLAT WASHER 6	2				
306		JM27100016	HEX LOCK NUT M6	2				
307		JM27100102	RETAINING RING S-12	1				
308		JM27100012	WHEEL	1				
309		JM27180026	CAUTION LABEL	1				
310		JM27110005	MITER GAUGE ASSEMBLY	1				
	D10		INC.311-327					
311		JM27100127	FENCE COVER A	1				

A:

Interchange
O : Yes
X : No
< : the new part can be substituted for the current.
> : the current part can be substituted for the new.
S : Interchangeable as a set.

