



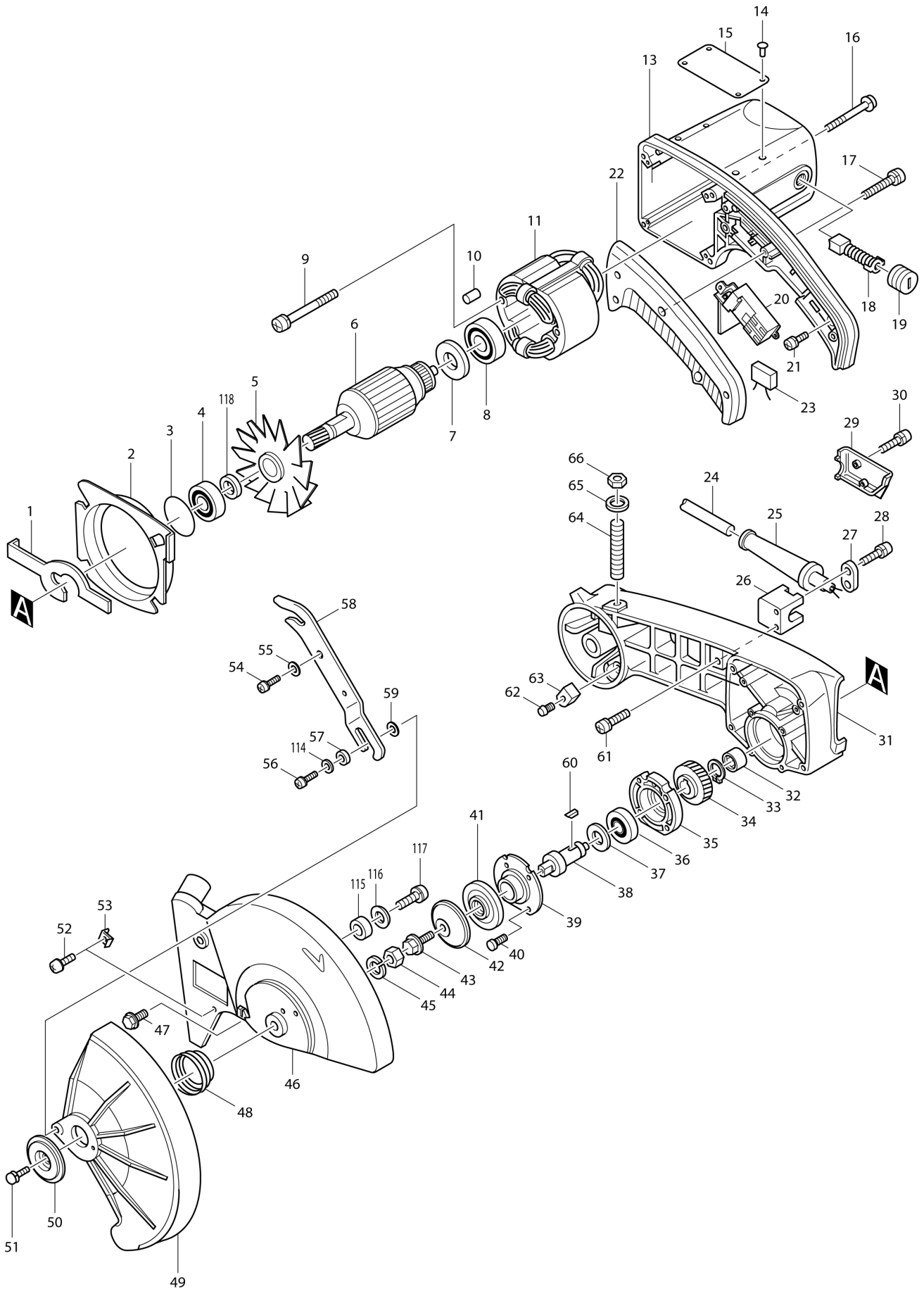
Diagram / Parts List

LS1440

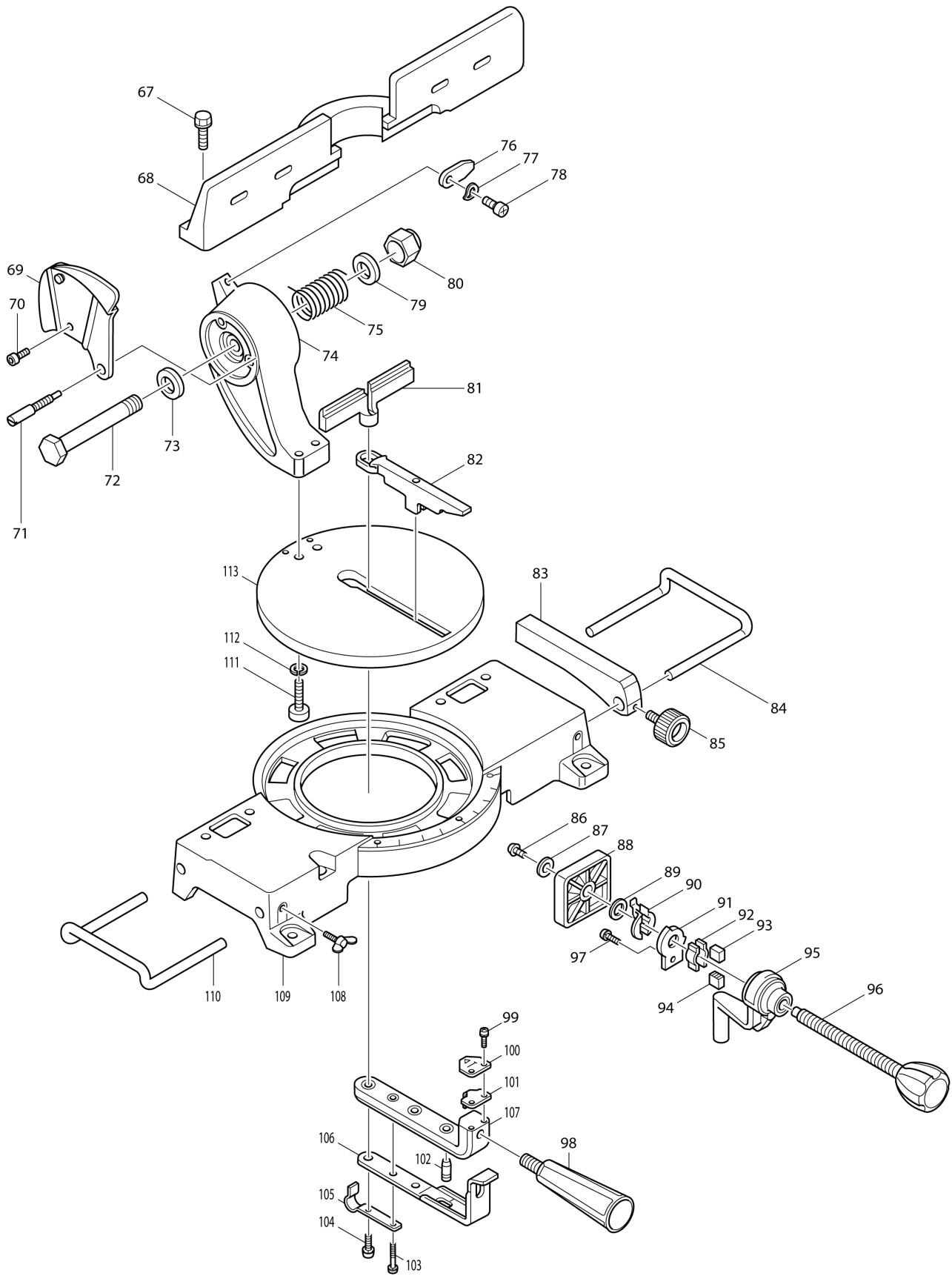
MITER SAW 355MM



(TH) LS1440 / MITER SAW 355MM



(TH) LS1440 / MITER SAW 355MM



TH	THAILAND
-----------	-----------------

LS1440 / MITER SAW 355MM

Item	Sub	Parts No.	Parts Description	Qty	I/C	E/C No.	Close No.	Remark
001		163100-8	SHAFT LOCK	1				
002		411466-3	BAFFLE PLATE	1				
003		213459-4	O RING 32	1				
004-1		211201-7	BALL BEARING 6002LLB	1				
005-1		241514-2	FAN 92	1				
006C1		514988-3	ARMATURE ASS'Y 220V	1				220V
	D10		INC. 5,7,8					
006C2		516728-5	ARMATURE ASS'Y 220V	1	X	51214		220V
	D10		INC. 5,7,8					
007		681623-9	INSULATION WASHER	1				
008		211068-3	BALL BEARING 6200LB	1				
009-1		911290-9	PAN HEAD SCREW M5X65	2				
010		263013-4	RUBBER PIN 4	1				
011C		524778-6	FIELD ASS'Y 220V	1				220V
	C10	654020-2	RING TERMINAL	2				
	C20	654502-4	CONNECTOR P-2	2				
011C1		526008-1	FIELD ASS'Y 220V	1	X	51214	C0739	220V
	C10	654020-2	RING TERMINAL	2			C0739	
	C20	654502-4	CONNECTOR P-2	2			C0739	
011C2		526008-1	FIELD ASS'Y 220V	1	O	C0739		220V
	C10	654020-2	RING TERMINAL	2		C0739		
	C20	654502-4	CONNECTOR P-2	2		C0739		
013		157734-7	MOTOR HOUSING	1				
	C10	643653-8	BRUSH HOLDER 6.5-13.5	2				
	C11	643660-1	BRUSH HOLDER 6.5-13.5	2	O	55752		
	C30	817880-5	CAUTION LABEL	1				
	D10		INC. 10					
013-1		152937-8	MOTOR HOUSING COMPLETE	1	X	63305		
	C10	643660-1	BRUSH HOLDER 6.5-13.5	2				
	C20	817880-5	CAUTION LABEL	1				
	D10		INC. 10					
014		953106-2	RIVET 0-5	4			C2859	
015		856017-9	NAME PLATE LS1440	1			C2859	
015-1		854L85-8	LS1440 NAME PLATE	1	<	C2859	C5511	
015-2		855H32-8	LS1440 NAME PLATE	1	<	C5511		
016		251335-4	+ PAN HEAD SCREW M5X80	4				
017		911158-9	PAN HEAD SCREW M4X30	4				
018B		181044-0	CARBON BRUSH CB-153	1			85070	
018B1		B-80329	CARBON BRUSH SET CB-153A	1	<	85070		
019		643650-4	BRUSH HOLDER CAP 6.5-13.5	2			B0305	
019-1		643650-4	BRUSH HOLDER CAP 6.5-13.5	2	O	B0305		
020		651135-6	SWITCH SGE220RD-1	1				
020-1		651153-4	SWITCH SGE220RD-1	1	X	51214		
021		911101-8	PAN HEAD SCREW M4X6	1				
022		410836-3	HANDLE COVER	1				
024S		691216-4	POWER SUPPLY CORD 1.25-2-2.5	1			DU473	
024S1		692171-3	POWER SUPPLY CORD 1.5-2-2.5	1	S	DU473		
025		682505-8	CORD GUARD 10-90	1				
026		411468-9	CLAMP BASE	1				
027		687000-3	STRAIN RELIEF	1			DU473	
027-1		687001-1	STRAIN RELIEF	1	S	DU473		
028		911133-5	PAN HEAD SCREW M4X18	2				
029		411467-1	CLAMP COVER	1				
030		911128-8	P.H.SCREW M4X16 WITH WR	2				
031		157859-7	GEAR HOUSING	1			DS210	
	C10	213459-4	O RING 32	1			DS210	
	C20	951157-9	SPRING PIN 5-16	2			DS210	
031-1		157859-7	GEAR HOUSING	1	O	DS210		
	C10	213459-4	O RING 32	1		DS210		
	C20	951157-9	SPRING PIN 5-16	2		DS210		
032		212113-7	NEEDLE BEARING 1212	1				
033		961060-6	RETAINING RING S-20	1				
034-1		226411-3	HELICAL GEAR 41	1				
035		315055-5	BEARING BOX	1				
036		211306-3	BALL BEARING 6204LLB	1				

A:LS1440(H)

Interchange
O : Yes
X : No
< : the new part can be substituted for the current.
> : the current part can be substituted for the new.
S : Interchangeable as a set.

TH	THAILAND
----	----------

LS1440 / MITER SAW 355MM

Item	Sub	Parts No.	Parts Description	Qty	I/C	E/C No.	Close No.	Remark
037		253327-9	THIN WASHER 20	1				
038		321729-8	SPINDLE	1			DG086	
038-1		321730-3	SPINDLE	1	S	DG086		
039		285649-9	BEARING RETAINER 72	1				
040		912231-8	COUNTERSUNK HEAD SCREW M5X20	4				
041		224264-4	INNER FLANGE 65	1				
042-1		224310-3	OUTER FLANGE 65	1				
043		251644-1	HEX. FLANGE HEAD BOLT M8X20	1			DG086	
043-1		251637-8	HEX. BOLT M8X20	1	S	DG086		
044		931302-2	HEX. NUT M6	1				
045		942151-2	SPRING WASHER 6	1				
046		151281-0	BLADE CASE	1			74433	
	C10	817931-4	CAUTION LABEL	1			74433	
046-1		154925-1	BLADE CASE COMPLETE	1	<	74433	DG086	
	C10	817931-4	CAUTION LABEL	1		74433	DG086	
046-2		154925-1	BLADE CASE COMPLETE	1	<	DG086	DS210	
	C10	817931-4	CAUTION LABEL	1		DG086	DS210	
	C20	816847-0	OPERATIONAL INDICATION LABEL	1		DG086	DS210	
046-3		154925-1	BLADE CASE COMPLETE	1	O	DS210		
	C10	817931-4	CAUTION LABEL	1		DS210		
	C20	816847-0	OPERATIONAL INDICATION LABEL	1		DS210		
047		265324-3	HEX. FLANGE HEAD BOLT M8X12	1				
048		231939-8	SPRING 30	1				
049		414084-6	SAFETY COVER	1			74433	
049-1		419482-9	SAFETY COVER	1	<	74433		
050		343358-7	CENTER PLATE	1				
051		923311-5	CAP SQUARE NECK BOLT M6X12	1				
052		911206-4	PAN HEAD SCREW M5X10	2				
053		343492-3	BLADE STOPPER	2				
054		251333-8	+ PAN HEAD SCREW M8	1				
055		253878-2	FLAT WASHER 10	1				
056		251339-6	+ PAN HD. SCREW M8	1				
057		257146-5	RING 10	1				
058-1		343792-1	GUIDE ARM	1				
059		253731-2	FLAT WASHER 8	1				
060		254203-0	KEY 4	1				
061		911121-2	PAN HEAD SCREW M4X14	2				
062-1		251399-8	+ PAN HEAD SCREW M5	1				
063		411479-4	CUSHION	1				
064		251959-6	-SCREW (FLAT POINT)M10X80	1				
065		941252-3	FLAT WASHER 10	1				
066		931501-6	HEX. NUT M10	1				
067		921551-9	HEX. BOLT M10X30	4				
068		316030-4	GUIDE FENCE	1			93746	
068-1		318866-7	GUIDE RULE	1	<	93746		
069		163279-5	SUPPORTER	1				
070		922331-6	HEX. SOCKET HEAD BOLT M6X20	1				
071		322144-9	SET SCREW M10	1				
072		251698-8	HEX. BOLT M16	1				
073		253771-0	FLAT WASHER 16	1				
074		154358-0	ARM COMPLETE	1				
	C11	256738-7	PIN 5	2				
074-1		154358-0	ARM COMPLETE	1	X	48720	74433	
	C11	256738-7	PIN 5	1			74433	
074-2		154929-3	ARM COMPLETE	1	<	74433		
	C11	256738-7	PIN 5	1		74433		
075		231533-6	TORSION SPRING 33	1				
076		341926-0	HANDLE LATCH	1				
077		253948-7	WAVE WASHER 8	1				
078		251298-4	+ PAN HEAD SCREW M8	1				
079		253771-0	FLAT WASHER 16	1				
080		252044-8	HEX. NUT M16-24	1				
081		414092-7	FENCE PLATE	1			74433	
081-1		419483-7	FENCE PLATE	1	<	74433		
082		410849-4	KERF BOARD	1			93746	

A:LS1440(H)

Interchange
 O : Yes
 X : No
 < : the new part can be substituted for the current.
 > : the current part can be substituted for the new.
 S : Interchangeable as a set.

TH	THAILAND
-----------	-----------------

LS1440 / MITER SAW 355MM

Item	Sub	Parts No.	Parts Description	Qty	I/C	E/C No.	Close No.	Remark
082-1		453636-8	KERF BOARD	1	<	93746		
083		312511-6	SET PLATE	1				
084		322027-3	HOLDER	1				
085		251804-5	SCREW M6X13	1				
086		911317-5	PAN HEAD SCREW M6X14	1				
087		253047-5	FLAT WASHER 6	1				
088		315891-9	WISE PLATE	1				
089		253744-3	FLAT WASHER 12	1				
090		341912-1	NUT HOLDER	1				
091		342967-9	SET PLATE	1				
092		341911-3	PROTECTOR	2				
093		321490-7	RELEASE NUT R	1				
094		321491-5	RELEASE NUT L	1				
095-1		151201-4	WISE ARM COMPLETE	1	O	57946		
	C10	816182-6	INDICATION LABEL	1				
096		271275-0	KNOB 45	1				
097		911216-1	PAN HEAD SCREW M5X14	1				
098		273436-8	GRIP 37	1				
099		911108-4	PAN HEAD SCREW M4X8	2				
100		816173-7	INDICATION LABEL	1				
101		342823-3	PLATE	1				
102		321981-8	LATCH PIN	1				
103		911256-9	PAN HEAD SCREW M5X35	1				
104		921456-3	HEX. BOLT M8X35	2				
105		232093-1	LEAF SPRING	1				
106		343359-5	LATCH SPRING	1				
107		311795-3	TURNING STAY	1				
108-1		924216-2	WING BOLT M5X15	2				
109		151248-8	BASE COMPLETE	1				
	C10	817837-6	CAUTION LABEL	1				
	C20	953206-8	RIVET 2-5	3				
	C30	813L22-1	CAUTION LABEL	2		C6580		
110		322027-3	HOLDER	1				
111		922562-7	HEX. SOCKET HEAD BOLT M10X40	2				
112		942251-8	SPRING WASHER 10	2				
113		311796-1	TURN BASE	1				
114		253878-2	FLAT WASHER 10	1				
115		262044-0	RUBBER RING 12	1				
116		253011-6	FLAT WASHER 6	1				
117		911216-1	PAN HEAD SCREW M5X14	1				
118		267710-4	WASHER 15	1				
400		782212-4	SOCKET WRENCH 13	1				
402		122330-0	DUST BAG ASS'Y	1				
	D10		INC. 403					
403		410602-8	FASTENER	1				
500-2		122563-7	WISE ASS'Y	1	O	57946		
	D10		INC. 86-97					
916		345196-3	SAFETY COVER	1		DG665		
918		266192-7	TAPPING SCREW 4X14	1		DG665		
B02		191239-7	HOLDER SET	1		Y09141		
	D10		INC. 83-85,108,110			Y09141		

A:LS1440(H)

Interchange
 O : Yes
 X : No
 < : the new part can be substituted for the current.
 > : the current part can be substituted for the new.
 S : Interchangeable as a set.