

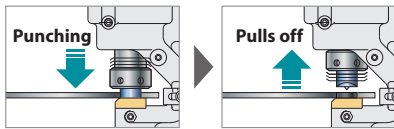


Cordless Hole Puncher DPP200

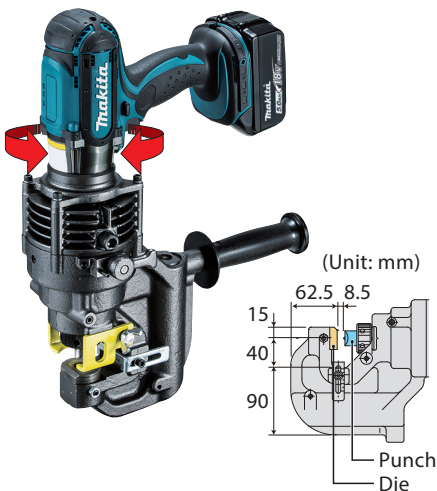


**Automatic
punch return**

After a punching cycle is completed, hydraulic pressure automatically pulls off the punch from workpiece and returns it to the initial position to enable efficient continuous hole punching.



Motor section swivels full 360 degrees.



Punching capacity

Flat bar	Max: 80mm x t8 (Center punching)
Angle	Min: 40mm x 40mm x t3 Max: 80mm x 80mm x t8
Channel	Min: 75mm x 40mm Max: 100mm x 50mm (Flange punching)

Portable and hydraulic (No need for hydraulic pressure hose)

High-speed punching of round/oblong holes through structural steels

The cordless one is now available.



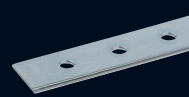
Ø20mm / Thickness 8mm
For mild steel of 65,000 psi
tensile strength

18V
LITHIUM-ION

Versatile punch is applicable to a variety of materials: mild steel, stainless steel, channel, aluminum and copper.

Provides high-speed punching of round/oblong holes through structural steels such as flat bar, angle or channel.

Flat bar



Angle



Channel



Accessories

Combination of punch and die

- Punching holes through a thin structural metal plate may cause deformation of the plate and burr on the holes.
- If you need precision punching, see the tables below to select an optimum combination of punch and die.

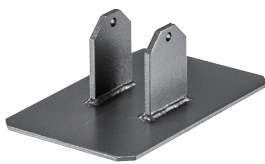
● Round punching ○ Oblong punching



● Round punching						
Punch		Die		Cutting material		
				Tensile	Channel	Tensile
Hole diameter (mm)	Part No.	Hole diameter (mm)	Part No.	Mild Steel (65,000 psi)		Stainless Steel (89,000 psi)
6	SC05340040	SB6	SC00000203	t2-t4		t3-t4
6.5	SC05340050	SB6.5	SC00000205	t2-t6		t3-t4
8	SC05340060	SB8	SC00000207	t2-t6		t3-t4
8.5	SC05340070	SB8.5	SC00000209	t2-t6		t3-t4
10	SC05340080	SB10	SC00000211	t2-t6	t7.5	t3-t4
11	SC05340090	SB11	SC00000213	t2-t8	t7.5	t3-t6
12	SC05340100	SB12	SC00000215	t2-t8	t7.5	t3-t6
13	SC05340110	SB13	SC00000217	t2-t8	t7.5	t3-t6
14	SC05340120	SB14	SC00000219	t2-t8	t7.5	t3-t6
15	SC05340130	SB15	SC00000221	t2-t8	t7.5	t3-t6
16	SC05340140	SB16	SC05332710	t2-t8	t7.5	t3-t6
18	SC05340150	SB18	SC00000223	t2-t8	t7.5	t3-t6
20	SC05340160	SB20	SC05352510	t2-t8	t7.5	t3-t6

○ Oblong punching						
Punch		Die		Cutting material		
				Tensile	Channel	Tensile
Hole diameter (mm)	Part No.	Hole diameter (mm)	Part No.	Mild Steel (65,000 psi)		Stainless Steel (89,000 psi)
6.5 x 10	SC05340200	6.5 x 10B	SC00000244	t2-t6		t3-t4
6.5 x 13	SC05340210	6.5 x 13B	SC00000246	t2-t6		t3-t4
8.5 x 13	SC05340220	8.5 x 13B	SC00000248	t2-t6		t3-t4
8.5 x 17	SC05340230	8.5 x 17B	SC00000250	t2-t6		t3-t4
9 x 13.5	SC05340240	9 x 13.5B	SC00000252	t2-t6		t3-t4
9 x 18	SC05340250	9 x 18B	SC00000254	t2-t6		t3-t4
10 x 15	SC05340260	10 x 15B	SC00000256	t2-t8	t7.5	t3-t6
10 x 20	SC05340270	10 x 20B	SC00000258	t2-t8	t7.5	t3-t6
11 x 16.5	SC05340280	11 x 16.5B	SC00000260	t2-t8	t7.5	t3-t6
12 x 18	SC05340290	12 x 18B	SC00000262	t2-t8	t7.5	t3-t6
13 x 19.5	SC05340300	13 x 19.5B	SC00000264	t2-t8	t7.5	t3-t6
14 x 21	SC05340310	14 x 21B	SC00000266	t2-t8	t7.5	t3-t6

Work stand
SC03801080



Slide stopper
SC03300790



Hydraulic Oil
SC00000106
35mL



SC00000142
150mL



SC00000270
1,000mL



18V LITHIUM-ION	DC18RC DC18RD		DC18SD
	BL1830B 3.0Ah	22 min	60 min
BL1840B 4.0Ah	36 min	90 min	
BL1850B 5.0Ah	45 min	110 min	
BL1860B 6.0Ah	55 min	130 min	

Cordless Hole Puncher

DPP200

Capacity	Steel: 20 mm (13/16") Stainless Steel: 20 mm (13/16")
Max Throat Depth	40 mm (1-9/16")
Dimensions (L x W x H)	w/ BL1830B / BL1840B / BL1850B / BL1860B: 417x127x315 mm (16-3/8"x5"x12-3/8")
Net weight	10.5 kg (23.2 lbs.)

Standard Equipment: Punch, Dice, Hex Wrench, Spanner, Bar for fastening nuts, Grip, Oil

The weight may differ depending on the attachment(s), including the battery cartridge. The lightest and heaviest combination, according to EPTA-Procedure 01/2014, are shown in the table.
Items of standard equipment and specifications may vary by country or area.

Makita Corporation

3-11-8 Sumiyoshi-cho, Anjo, Aichi, 446-8502 Japan

PRINTED IN JAPAN 201911