



TH	THAILAND
----	----------

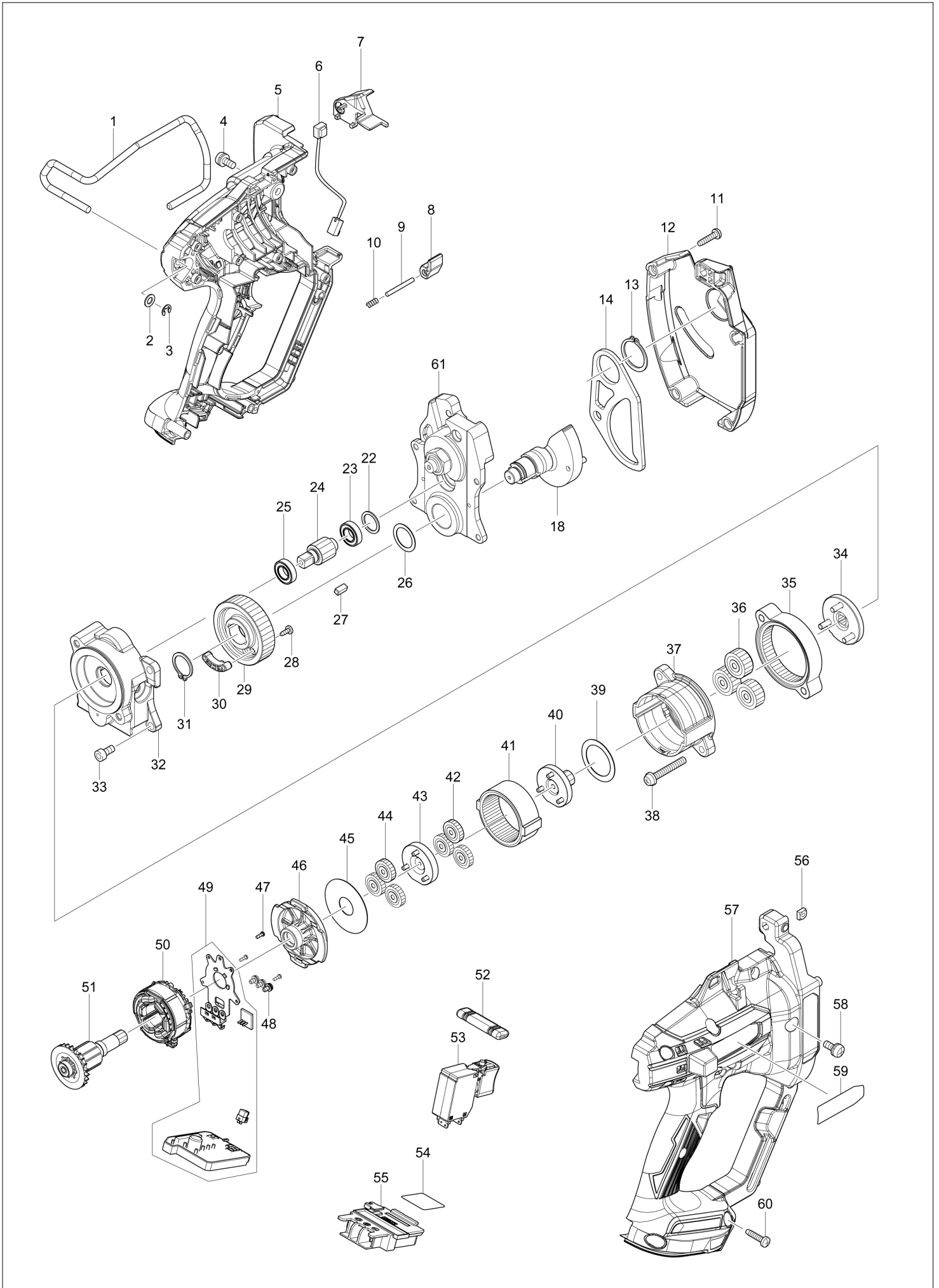
Diagram / Parts List

DSC102

CORDLESS THREADED ROD CUTTER



(TH) DSC102 / CORDLESS THREADED ROD CUTTER



TH	THAILAND
----	----------

DSC102 / CORDLESS THREADED ROD CUTTER

Item	Sub	Parts No.	Parts Description	Qty	I/C	E/C No.	Close No.	Remark
001		281019-0	HOOK	1				
002		941102-2	FLAT WASHER 5	1				
003		961011-9	STOP RING E-4	1				
004		911213-7	PAN HEAD SCREW M5X12	1				
005		183J34-9	HOUSING SET	1				
	C10	263002-9	RUBBER PIN 4	1				
	C20	263005-3	RUBBER PIN 6	3				
	C30	816U42-8	INDICATION LABEL	1				
	C40	816V02-6	CAUTION LABEL	1				
	D10		INC. 57					
006		620821-0	LED CIRCUIT	1				
007		458373-9	LED HOLDER	1				
008		458379-7	SCREW GUIDE	1				
009		256267-0	PIN 3	1				
010		231403-9	COMPRESSION SPRING 3	1				
011		265995-6	TAPPING SCREW 4X18	4				
012		140B24-7	FRONT COVER COMPLETE	1				
	C10	816U44-4	CAUTION LABEL	1				
013		961104-2	RETAINING RING S-24	1				
014		347350-5	RETURN PLATE	1				
018		144986-9	CAM COMPLETE	1				
022		267447-3	FLAT WASHER 14	1				
023		211485-7	BALL BEARING 6800LLU	1			DG997	
023-1		210171-7	BALL BEARING 6800ZZ	1	O	DG997		
024		226168-6	SPUR GEAR 10C	1				
025		211485-7	BALL BEARING 6800LLU	1			DG997	
025-1		210171-7	BALL BEARING 6800ZZ	1	O	DG997		
026		253409-7	FLAT WASHER 17	1				
027		254202-2	KEY 4	2				
028		265954-0	TAPPING SCREW BIND PT3X8	2				
029		226169-4	SPUR GEAR 39	1				
030		144990-8	MAGNET HOLDER COMPLETE	1				
031		961057-5	RETAINING RING S-17	1				
032		144992-4	GEAR COVER COMLPETE	1				
033		922212-4	HEX. SOCKET HEAD BOLT M5X12	4				
034		144989-3	CARRIER COMPLETE	1				
035		226166-0	INTERNAL GEAR 48	1				
036		226165-2	SPUR GEAR 19	3				
037		458374-7	GEAR HOUSING	1				
038		911258-5	PAN HEAD SCREW M5X35	2				
039		253792-2	FLAT WASHER 26	1				
040		144988-5	SPUR GEAR 9 COMPLETE	1				
041		226164-4	INTERNAL GEAR 53	1				
042		226163-6	SPUR GEAR 21	3				
043		144987-7	SPUR GEAR 10B COMPLETE	1				
044		226163-6	SPUR GEAR 21	3				
045		253410-2	FLAT WASHER 15	1				
046		458375-5	GEAR HOUSING COVER	1				
047		266490-9	TAPPING SCREW PT 2X6	3				
048		652069-6	FLAT HEAD SCREW M3X6	3				
049		620820-2	CONTROLLER	1			DS205	
049-1		620P45-4	CONTROLLER	1	<	DS205		
050		629339-8	STATOR	1				
051		619512-8	ROTOR	1			DP336	
051-1		619512-8	ROTOR	1	O	DP336		
052		458378-9	F/R CHANGE LEVER	1				
053		651367-5	SWITCH C3JW-2CM	1				
054		854H32-5	DSC102 SERIAL NO. LABEL	1				
055		643874-2	TERMINAL	1				
056		252173-7	SQUARE NUT	1				
057		183J34-9	HOUSING SET	1				
	C10	263002-9	RUBBER PIN 4	1				
	C20	263005-3	RUBBER PIN 6	3				
	C30	816U42-8	INDICATION LABEL	1				
	C40	816V02-6	CAUTION LABEL	1				

A:DSC102Z(N)
B:DSC102ZJ(N)

Interchange
O : Yes
X : No
< : the new part can be substituted for the current.
> : the current part can be substituted for the new.
S : Interchangeable as a set.

