



TH	THAILAND
----	----------

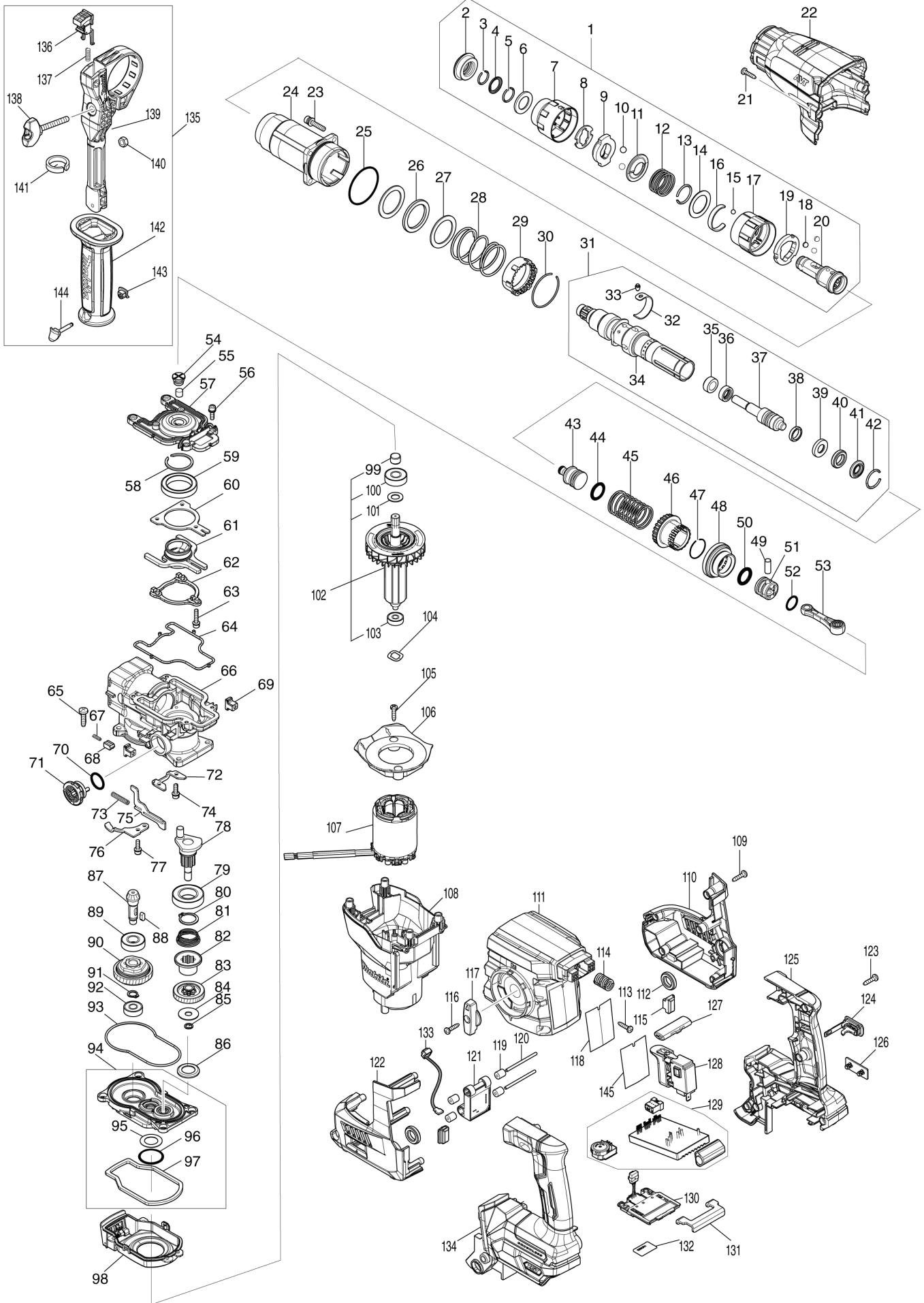
Diagram / Parts List

HR009G

30MM CRDLS COMBINATION HAMMER



(TH) HR009G / 30MM CRDLS COMBINATION HAMMER



TH	THAILAND
----	----------

HR009G / 30MM CRDLS COMBINATION HAMMER

Item	Sub	Parts No.	Parts Description	Qty	I/C	E/C No.	Close No.	Remark
001		127219-7	TOOL HOLDER ASSEMBLY	1				
	D10		INC. 2-20					
002		422570-3	CAP 35	1				
003		233989-9	RING SPRING 14	1				
004		346221-3	WASHER 16	1			DV168	
004-1		346834-0	WASHER 16	1	O	DV168		
005		233992-0	RING SPRING 15	1				
006		253467-3	WASHER 17	1				
007		459162-5	CHUCK COVER	1				
008		347687-0	PLATE	1				
009		310926-1	STOPPER	1				
010		216022-2	STEEL BALL 7.0	2				
011		347745-2	GUIDE WASHER	1				
012		232554-1	COMPRESSION SPRING 26	1				
013		233924-7	RING SPRING 21	1				
014		253468-1	FLAT WASHER 24	1				
015		216018-3	STEEL BALL 5.0	1				
016		232555-9	LEAF SPRING	1				
017		459159-4	CHANGE COVER A	1				
018		216013-3	STEEL BALL 6	3				
019		347496-7	CHANGE RING A	1				
020		327264-4	TOOL HOLDER	1				
021		266326-2	TAPPING SCREW 4X18	2				
022		459167-5	BARREL COVER	1				
023		266793-1	HEX. S.H.B. M5X25 WITH WR	4				
024		140J35-0	BARREL COMPLETE	1				
	C10	213636-8	OIL SEAL 25	1				
025		213620-3	O RING 46	1				
026		422493-5	RUBBER RING 31	1				
027		267354-0	FLAT WASHER 31	2				
028		232496-9	COMPRESSION SPRING 37	1				
029		419986-1	LOCK SLEEVE	1				
030		233952-2	RING SPRING 41	1				
031		136305-3	TOOL HOLDER ASS'Y	1				
	D10		INC. 32-42					
032		347501-0	LEAF SPRING	1				
033		256598-7	SHOULDER PIN 4	1				
034		327272-5	TOOL HOLDER GUIDE	1				
035		327515-5	SLEEVE 11	1				
036		327516-3	RING 11	1				
037		140S90-6	IMPACT BOLT B COMPLETE	1				
038		213880-7	SEAL RING 12	1				
039		327268-6	RING 11	1				
040		424267-0	CUSHION RING 12	1				
041		327271-7	WASHER 11	1				
042		231987-7	RING SPRING 21	1				
043		327266-0	STRIKER	1				
044		213881-5	O RING 16	1				
045		232497-7	COMPRESSION SPRING 27	1				
046		327276-7	DRIVING SLEEVE	1				
047		232501-2	RING SPRING 24	1				
048		226868-8	SPIRAL BEVEL GEAR 31	1				
049		268122-4	PIN 7	1				
050		213881-5	O RING 16	1				
051		319807-6	PISTON	1				
052		213226-7	O RING 16	1				
053		140J36-8	CONNECTING ROD COMPLETE	1				
054		459180-3	FILTER CAP	1				
055		443153-6	FELT	1				
056		922123-3	HEX. SOCKET HEAD BOLT M4X14	4				
057		319802-6	CRANK CAP	1				
058		961140-8	RETAINING RING	1				
059		211423-9	BALL BEARING 6806DDW	1				
060		347500-2	BEARING RETAINER B	1				
061		140J31-8	COUNTER WEIGHT COMPLETE	1				

A:HR009GZ(N)

Interchange
 O : Yes
 X : No
 < : the new part can be substituted for the current.
 > : the current part can be substituted for the new.
 S : Interchangeable as a set.

TH	THAILAND
----	----------

HR009G / 30MM CRDLS COMBINATION HAMMER

Item	Sub	Parts No.	Parts Description	Qty	I/C	E/C No.	Close No.	Remark
062		310927-9	WEIGHT RETAINER	1				
063		266948-8	HEX S. H. BOLT M4X20 WITH WR	3				
064		459182-9	SEAL RING B	1				
065		266021-4	TAPPING SCREW 5X20	4				
066		140J33-4	CRANK HOUSING COMPLETE	1				
067		232499-3	COMPRESSION SPRING 2	1				
068		310929-5	PUSH CORN	1				
069		455165-7	FIX GUIDE	2				
070		213262-3	O RING 18	1				
071		459175-6	LINK LEVER	1				
072		347497-5	BEARING RETAINER A	1				
073		234019-9	COMPRESSION SPRING 4	1				
074		922123-3	HEX. SOCKET HEAD BOLT M4X14	2				
075		345814-3	LINK PLATE	1				
076		347498-3	GUIDE PLATE	1				
077		922123-3	HEX. SOCKET HEAD BOLT M4X14	1				
078		140M22-7	CRANK SHAFT COMPLETE	1				
079		211323-3	BALL BEARING 6904LLU	1				
080		961060-6	RETAINING RING S-20	1				
081		232498-5	CONICAL COMP. SPRING 21-26	1				
082		327273-3	CLUTCH	1				
083		226869-6	HELICAL GEAR 31	1				
084		267353-2	FLAT WASHER 8	1				
085		961034-7	RETAINING RING	1				
086		345818-5	CUP WASHER 16	1				
087		226867-0	SPIRAL BEVEL GEAR 8	1				
088		254239-9	KEY 4	1				
089		211131-2	BALL BEARING 6001DDW	1				
090		125386-2	TORQUE LIMITER ASS'Y	1				
091		961006-2	RETAINING RING S-10	1				
092		210005-4	BALL BEARING 608DDW	1				
093		459181-1	SEAL RING A	1				
094		136330-4	GEAR HOUSING ASS'Y	1				
	D10		INC. 95-97					
095		253749-3	FLAT WASHER 16	1				
096		213445-5	O-RING 26	1				
097		459183-7	SPONGE SHEET	1				
098		140J32-6	AIR DUCT COMPLETE	1				
099		331775-3	SLEEVE 10	1				
100		211097-6	BALL BEARING 6000LLB	1				
101		253828-7	FLAT WASHER 10	1				
102		519722-6	ROTOR ASS'Y	1				
	D10		INC. 99-101,103					
103		210022-4	BALL BEARING 626DDW	1				
104		253555-6	WAVE WASHER 12	1				
105		266326-2	TAPPING SCREW 4X18	2				
106		413F13-2	BAFFLE PLATE	1				
107		629A96-4	STATOR	1				
108		141H81-4	MOTOR HOUSING COMPLETE	1				
	C10	263027-3	RUBBER PIN 4	1				
109		266326-2	TAPPING SCREW 4X18	5				
110		183V77-3	HOUSING SET	1				
	D10		INC. 122					
111		413F12-4	HANDLE BASE	1				
112		459184-5	CUSHION RING 12	2				
113		266326-2	TAPPING SCREW 4X18	4				
114		232500-4	COMPRESSION SPRING 10	1				
115		422863-8	BATTERY CUSHION	2				
116		266326-2	TAPPING SCREW 4X18	1				
117		459174-8	CHANGE LEVER	1				
118		8119X5-5	HR009G NAME PLATE	1				
119		422472-3	SPONGE SLEEVE 3	4				
120		256886-2	ROD 3	2				
121		620J19-9	ACCELEROMETER CIRCUIT	1				
122		183V77-3	HOUSING SET	1				

A:HR009GZ(N)

Interchange

O : Yes

X : No

< : the new part can be substituted for the current.

> : the current part can be substituted for the new.

S : Interchangeable as a set.

HR009G / 30MM CRDLS COMBINATION HAMMER

Item	Sub	Parts No.	Parts Description	Qty	I/C	E/C No.	Close No.	Remark
	D10		INC. 110					
123		266326-2	TAPPING SCREW 4X18	6				
124		140G30-2	CAP COMPLETE	1				
	C10	213A05-9	O-RING16	1				
125		183V96-9	HANDLE SET	1				
	C10	263005-3	RUBBER PIN 6	2				
	C20	8005T5-8	XGT LOGO LABEL	1				
	D10		INC. 134					
126		459753-2	CAP	1				
127		453124-5	F/R CHANGE LEVER	1				
128		651439-6	SWITCH C3JR-4B-2	1				
129		620J18-1	CONTROLLER	1				
130		632P65-6	TERMINAL UNIT	1				
131		347885-6	SUPPORT PLATE	1				
132		8119Y1-0	HR009G SERIAL NO. LABEL	1				
133		620G34-5	LED CIRCUIT	1				
134		183V96-9	HANDLE SET	1				
	C10	263005-3	RUBBER PIN 6	2				
	C20	8005T5-8	XGT LOGO LABEL	1				
	D10		INC. 125					
135		126882-3	GRIP ASSEMBLY	1				
	D10		INC. 136-144					
136		144959-2	LOCK BUTTON COMPLETE	1				
137		233360-7	COMPRESSION SPRING 4	1				
138		265625-9	THUMB SCREW M6X50	1				
139		458355-1	SIDE HANDLE BASE	1				
140		931302-2	HEX. NUT M6	1				
141		422258-5	SPONGE SHEET	1				
142		458357-7	GRIP 36	1				
143		422255-1	CAP	1				
144		161838-9	FIX PIN	1				
145		8052T1-3	CLEAR LABEL	1			DM148	
A01		331886-4	DEPTH GAUGE	1				
A02		194683-7	GREASE VESSEL SET	1				
A03		443122-7	CLOTH	1				
A04		191F46-4	DRILL CHUCK SET	1				
B01		1910S0-5	HAMMER SERVICE KIT	1		Y08824		
	C10	181490-7	HAMMER GREASE 30G	2		Y08824	DS303	
	C11	1914C5-7	GREASE SET	2	O	DS303		
	D10		INC. 2,3,5,10,33,37,38,40,42,			Y08824		
	D20		INC. 44,47,50			Y08824		
F05		191F46-4	DRILL CHUCK SET	1				
F06		191F47-2	TOOL HOLDER SET	1				
F07		191F49-8	DUST CASE SET	1				
F08		191G00-4	DX11DUST COLLECTION SYSTEM SET	1				
F10		191W90-3	HOOK SET	1				
F22		199557-7	FILTER SET	1				