

XGT
40V Li-ion
max

Dust extraction system

Compatible with long bits
Dust collection is available for bits with an overall length of up to 265mm.

Depth gauge for increased drilling consistency

Equipped with HEPA Filter
which removes particles with an efficiency rating of 99.75% from the air passing through.

HEPA filter

Filter cleaning mechanism
by turning the dial, the dust falls off from the filter

Transparent dust case
for easy checking of collected dust amount

Easy disposal of dust and easy cleaning of dust case
thanks to:
• Dust case cover easy to open/ close with a single operation of a locking tab
• Wide opening of dust case

Dust case body is equipped with a fan for dust collection.

Photo: HR008G+DX10

Accessories

Dust case set
for DX11 / DX10
Part No. 191F49-8

Filter set
Part No. 199557-7

Dust cup set
for HR008G
Part No. 195173-3
for HR009G
Part No. 195179-1

Drill chuck set
for HR009G
Part No. 191F46-4

Tool holder set
for HR009G
Part No. 191F47-2

Spacer set
for HR008G
Part No. 191L91-5

Dust cup
Bit dia: 14.5mm
Part No. 421342-3

Hook set
Part No. 191W90-3

Charging Time

	Fast Charging	
	DC40RA	DC40RC
BL4020 2.0Ah	22 min	30 min
BL4025 2.5Ah	28 min	38 min
*1 BL4040 4.0Ah	45 min	67 min
*1 BL4050F 5.0Ah	50 min	85 min
BL4080F 8.0Ah	76 min	170 min

*1 Recommended battery

The weight may differ depending on the attachment(s), including the battery cartridge. The lightest and heaviest combination, according to EPTA-Procedure 01/2014, are shown in the table. Items of standard equipment and specifications may vary by country or area.

Cordless Combination Hammer			
HR008G / HR009G 30 mm (1-3/16") Adapted for SDS-PLUS bits			
	Variable Speed	HR008G	HR009G
	Brake	HR008G	HR009G
	Reversing	HR008G	HR009G
	Adapted for SDS-PLUS bits	HR008G	HR009G
	Torque Limiter	HR008G	HR009G
	Constant Speed	HR008G	HR009G
	Dust Collection	HR008G	HR009G
	Built-in Job Light	HR008G	HR009G
	Carrying Case	HR008G	HR009G
	Impact Energy	3.9 J	3.9 J
	Capacity	Concrete (w/ TCT Bit): 30 mm (1-3/16"), Steel: 13 mm (1/2"), Wood: 32 mm (1-1/4") Core Bit: 80 mm (3-1/8")	Concrete (w/ TCT Bit): 30 mm, Steel: 13 mm (1/2"), Wood: 32 mm (1-1/4") Core Bit: 80 mm (3-1/8")
	Blows Per Minute (BPM)	0 - 4,500	0 - 4,500
	No Load Speed (RPM)	0 - 840	0 - 840
	Chuck Capacity	1.5 - 13 mm (1/16 - 1/2")	1.5 - 13 mm (1/16 - 1/2")
	Sound Pressure Level	94 dB(A)	94 dB(A)
	Sound Power Level	105 dB(A)	105 dB(A)
	Vibration Level	Hammer Drilling into Concrete: 9.1 m/s ² w/ BL4040: 422 x 97 x 242 mm (16-5/8 x 3-13/16 x 9-1/2")	Hammer Drilling into Concrete: 9.1 m/s ² w/ BL4040: 439 x 97 x 242 mm (17-1/4 x 3-13/16 x 9-1/2")
	Dimensions (L x W x H)	w/ BL4050F: 441 x 97 x 263 mm (17-3/8 x 3-13/16 x 10-3/8")	w/ BL4050F: 457 x 97 x 263 mm (18 x 3-13/16 x 10-3/8")
	Net weight	5.2 - 6.8 kg (11.5 - 15.0 lbs.)	5.3 - 6.7 kg (11.7 - 14.8 lbs.)
	Standard Equipment	HR008G: Side grip, Depth Gauge, Battery, Charger	HR009G: Quick Change Drill Chuck, Side grip, Depth Gauge, Battery, Charger

Makita

Cordless Combination Hammer
HR008G / HR009G
30 mm (1-3/16") Adapted for SDS-PLUS bits

Satisfy Professional's Needs

XGT



XGT
40V Li-ion
max

Impact energy
[EPTA-Procedure 05/2009]

3.9
Joule



HR008G



Dust extraction system DX10 (option)

HEPA filter



HR009G

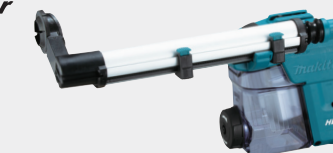


Quick change drill chuck



Dust extraction system DX11 (option)

HEPA filter



Makita Corporation

3-11-8 Sumiyoshi-cho, Anjo, Aichi, 446-8502 Japan

PRINTED IN JAPAN 202205

BL MOTOR **AFT**
AWS **AVT** **XPT**

Photo: HR008G+DX10

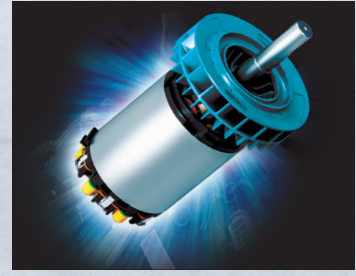
AVT Anti-Vibration Technology



Low vibration
9.1 m/s²
Hammer Drilling
into Concrete

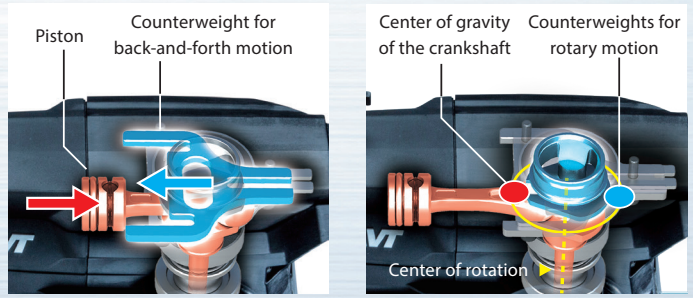
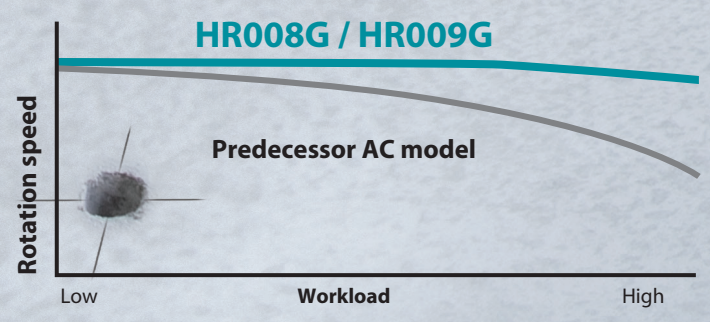
BL MOTOR

High efficiency
Brushless DC motor



Constant speed control

minimizes the reduction in bit speed to provide stable drilling.



Counterweight for back-and-forth motion
Counterweight to cancel the back-and-forth vibration caused by hammering

Counterweights for rotary motion
Counterweight to cancel the vibration caused by imbalanced rotation of crankshaft

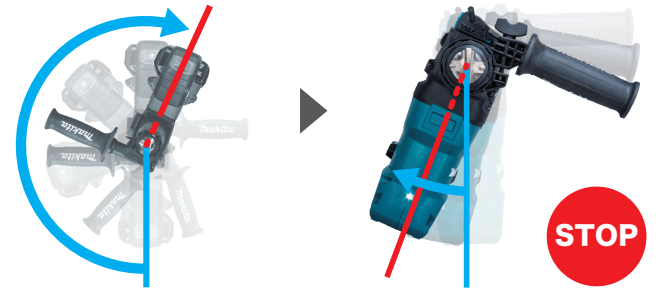
Drilling performance		
Drilled holes to a depth of 60mm (2-3/8") at 10kg pressing load Concrete with compressive strength of 40N/mm ² BL4040 / on full battery charge		
Work speed		
ø10.5mm (3/8")	ø16.0mm (5/8)	ø20.0mm (13/16")
5.0 sec	9.1 sec	17.1 sec
Work amount		
ø10.5mm (3/8")	ø16.0mm (5/8)	ø20.0mm (13/16")
109 pcs	59 pcs	35 pcs



Photo: HR008G+DX10

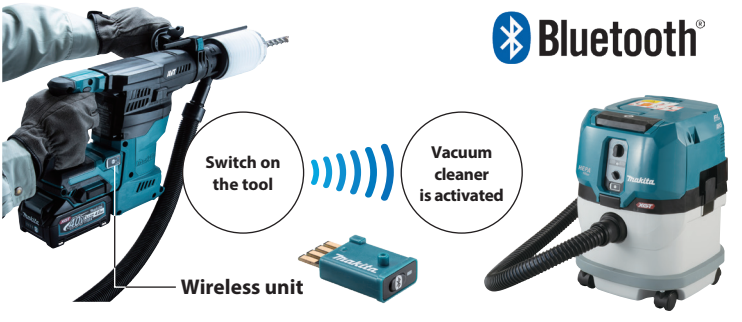
AFT Active Feedback sensing Technology

turns the motor off if bit rotation is suddenly forced to stop.



AWS Auto-start Wireless System

connects to compatible vacuum cleaner with Bluetooth. The vacuum cleaner automatically runs while the switch is on.



XPT eXtreme Protection Technology



Photo: HR008G