

**18V**  
LITHIUM-ION



**LXT**

**Accessories**

**Casing 55 set**  
Model: DFR551  
Part No. 191W94-5



**Casing 41 set**  
Model: DFR452  
Part No. 191W93-7



Model	Description	Part No.
DFR551	+ bit 2-155 set	191V02-0
	Square bit 2-155 set	191V04-6
	Pozidrive bit 2-155 set	191V06-2
DFR452	+ bit 2-137 set	191V01-2
	Square bit 2-137 set	191V03-8
	Pozidrive bit 2-137 set	191V05-4

**Charging Time**

Battery Model	Fast Charging		
	DC18RC	DC18RD	DC18SD
BL1815N 1.5Ah	15 min		30 min
BL1820B 2.0Ah	24 min		45 min
BL1830B 3.0Ah	22 min		60 min
BL1840B 4.0Ah	36 min		90 min
BL1850B 5.0Ah	45 min		110 min
BL1860B 6.0Ah	55 min		130 min

Cordless Auto Feed Screwdriver			
DFR551 / DFR452			
	Variable Speed	DFR551	DFR452
	Reversing	Screw Strip 3.5 - 4.2 x 20 - 41 mm (1/8 - 5/32 x 13/16 - 1-5/8")	3.5 - 4.2 x 25 - 55 mm (1/8 - 5/32 x 1 - 2-3/16")
	Carrying Case	Driving Shank (Hex) 6.35 mm (1/4") No Load Speed (RPM) 0 - 6,000 Sound Pressure Level 74 dB(A) Vibration Level Screwdriving w/o Impact: 2.5 m/s <sup>2</sup> or less	Driving Shank (Hex) 6.35 mm (1/4") No Load Speed (RPM) 0 - 6,000 Sound Pressure Level 75 dB(A) Vibration Level Screwdriving w/o Impact: 2.5 m/s <sup>2</sup> or less
		Dimensions (L x W x H) w/o Battery: 396 x 88 x 165 mm (15-5/8 x 3-1/2 x 6-1/2") w/ BL1830B / BL1840B / BL1850B / BL1860B: 396 x 88 x 211 mm (15-5/8 x 3-1/2 x 8-5/16")	Dimensions (L x W x H) w/o Battery: 360 x 88 x 165 mm (14-1/8 x 3-1/2 x 6-1/2") w/ BL1830B / BL1840B / BL1850B / BL1860B: 360 x 88 x 211 mm (14-1/8 x 3-1/2 x 8-5/16")
		Net weight 1.9 - 2.2 kg (4.2 - 4.9 lbs.)	Net weight 1.9 - 2.2 kg (4.2 - 4.9 lbs.)
Standard Equipment : Phillips Bit x3, Belt Clip, Battery, Charger			

The weight may differ depending on the attachment(s), including the battery cartridge. The lightest and heaviest combination, according to EPTA-Procedure 01/2014, are shown in the table. Items of standard equipment and specifications may vary by country or area.

**Makita**

**Cordless Auto Feed Screwdriver**  
**DFR551 / DFR452**

Satisfy Professional's Needs

**LXT**

High rotation speed  
**6,000 rpm**



**18V**  
LITHIUM-ION

**DFR551**

**55 mm (2-3/16")**



**DFR452**

**41 mm (1-5/8")**



**Continuous work amount**  
Model: DFR452  
Battery: BL1850B / Trigger lock-on condition  
Drove 25mm drywall screw through 12.5mm Drywall into 38mm SPF plate.

**Push drive is on.**  
**2,700 pcs**

**BL MOTOR XPT**

**Makita Corporation**

3-11-8 Sumiyoshi-cho, Anjo, Aichi, 446-8502 Japan

PRINTED IN JAPAN 202202



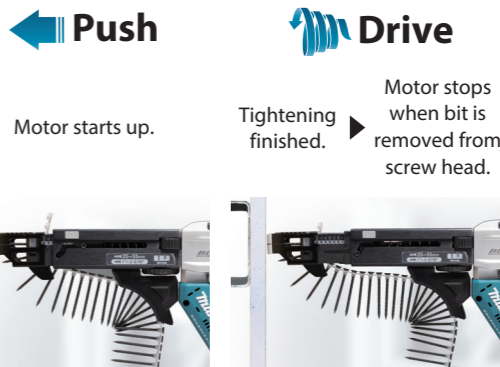
**Collated drywall screw**

Model	Diameter	Overall length
DFR551	3.5 - 4.2 mm	25 - 55 mm
DFR452		20 - 41 mm



**Push drive technology**

The motor rotates at full speed only when the screw is pressed against the board to reduce power consumption and noise.



**Continuous work amount**  
Model: DFR452  
Battery: BL1850B / Trigger lock-on condition  
Drove 25mm drywall screw through 12.5mm Drywall into 38mm SPF plate.

**Push drive is on.**  
**2,700 pcs**

**Push drive is off.**  
**880 pcs**



**More reliable Casing attachment**

**Enhanced durability**

- Screw feeding mechanism redesigned to improve durability and reduce screw fall
- Improved durability by changing the material of Casing from Plastic to Aluminum.



**Quick attachment / removal**

Reduces the trouble of reversing and replacing a bit



**Unfastening operation**

The tool allows you to change the direction of driver bit rotation with ease, either towards the right (clockwise) to tighten a screw or towards the left (counterclockwise) to loosen a screw.

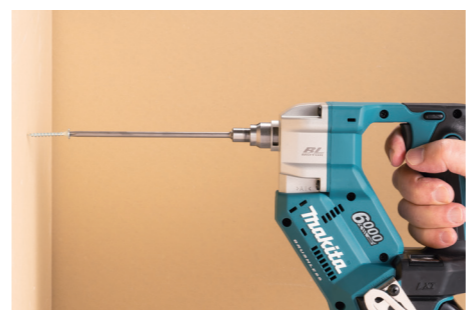


photo: DFR551

