



TH	THAILAND
----	----------

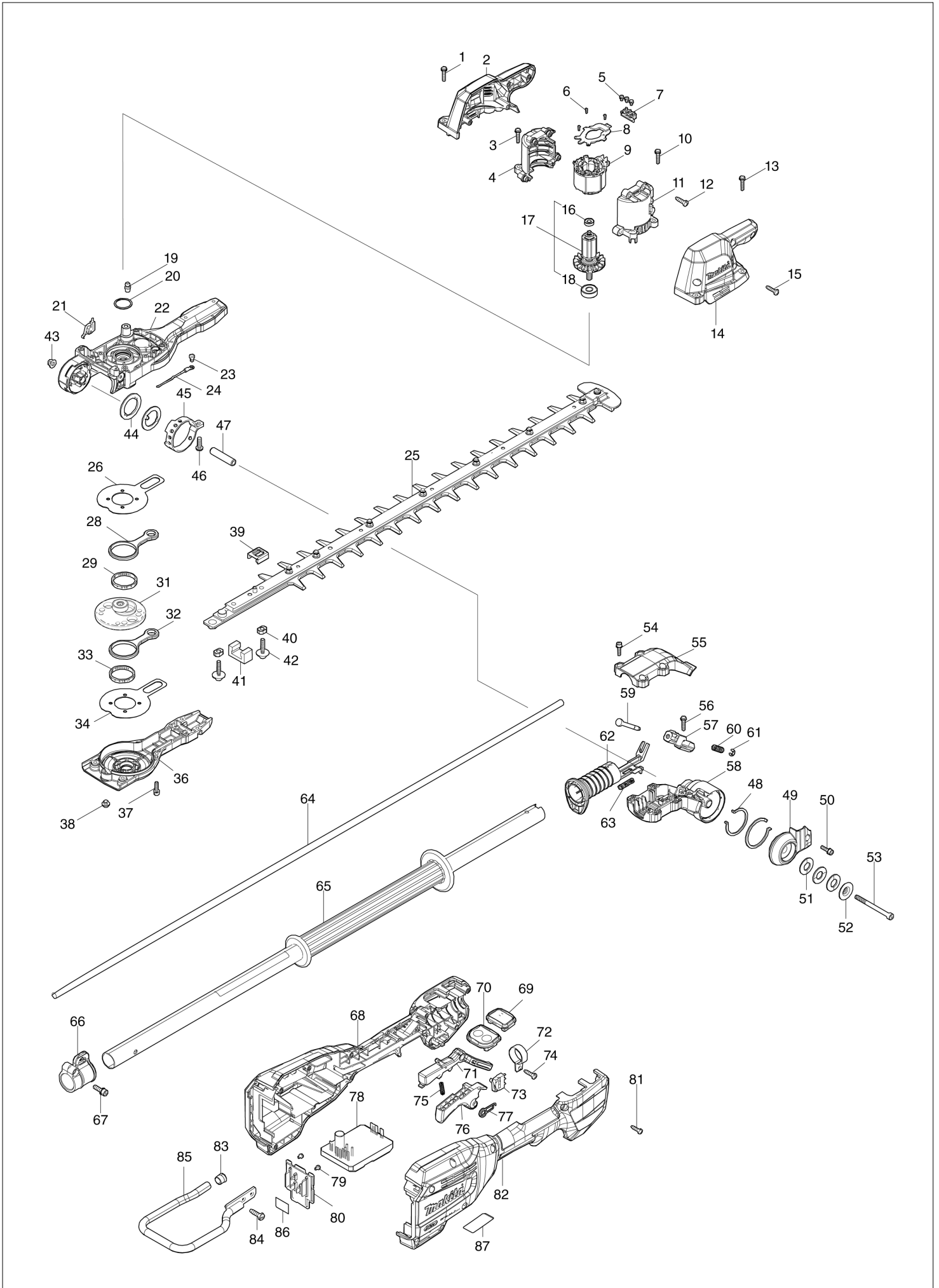
Diagram / Parts List

UN001G

600MM CRDLSS POLE HDG TRIMMER



(TH) UN001G / 600MM CRDLSS POLE HDG TRIMMER



TH	THAILAND
-----------	-----------------

UN001G / 600MM CRDLSS POLE HDG TRIMMER

Item	Sub	Parts No.	Parts Description	Qty	I/C	E/C No.	Close No.	Remark
001		911138-5	P.H.SCREW M4X20 WITH WR	2				
002		1830N2-0	HOUSING SET	1				
	D10		INC. 14					
003		911138-5	P.H.SCREW M4X20 WITH WR	2				
004		1830N0-4	MOTOR HOUSING SET	1				
	D10		INC. 11					
005		652069-6	FLAT HEAD SCREW M3X6	3				
006		266490-9	TAPPING SCREW PT 2X6	3				
007		638A88-2	LEAD UNIT	1				
008		620N82-6	CONTROLLER B	1				
009		629A75-2	STATOR	1				
010		911138-5	P.H.SCREW M4X20 WITH WR	2				
011		1830N0-4	MOTOR HOUSING SET	1				
	D10		INC. 4					
012		266326-2	TAPPING SCREW 4X18	4				
013		911138-5	P.H.SCREW M4X20 WITH WR	2				
014		1830N2-0	HOUSING SET	1				
	D10		INC. 2					
015		266326-2	TAPPING SCREW 4X18	4				
016		210215-3	BALL BEARING 695ZZ	1				
017		510598-4	ROTOR ASSEMBLY	1				
	D10		INC. 16,18					
018		210005-4	BALL BEARING 608DDW	1				
019		243107-1	GREASE NIPPLE	1				
020		213961-7	O RING 22	1				
021		632V50-5	SWITCH UNIT	1				
022		137154-1	GEAR HOUSING ASS'Y	1				
	C10	263002-9	RUBBER PIN 4	1				
	C20	263005-3	RUBBER PIN 6	4				
025		1914E7-7	SHEAR BLADE 600R SET	1				
	C10	188605-7	OIL VESSEL SET	1				
	C20	257859-8	SLEEVE 5	2				
	C30	347A61-8	BRUNCH CATCHER	1				
	C40	265C90-0	PAN HEAD SCREW M5X10 WITH WR	1				
026		347361-0	FRICTION PLATE	1				
028		347662-6	CONNECTING ROD	1				
029		212229-8	NEEDLE CAGE 315	1				
031		137187-6	HELICAL GEAR ASS'Y	1				
	C10	210029-0	BALL BEARING 608ZZ	1				
	C20	211499-6	BALL BEARING 626ZZ	1				
032		347662-6	CONNECTING ROD	1				
033		212229-8	NEEDLE CAGE 315	1				
034		347361-0	FRICTION PLATE	1				
036		137155-9	GEAR HOUSING COVER ASS'Y	1				
	C10	263002-9	RUBBER PIN 4	1				
037		922128-3	HEX. SOCKET HEAD BOLT M4X16	6				
038		266559-9	H.S.BUTTON HEAD BOLT M6X4	1				
039		422B58-5	DUST SEAL	1				
040		257859-8	SLEEVE 5	2				
041		443159-4	SEAL	1				
042		265A89-3	H.S.H.BOLT M5X25 WITH WR	2				
043		252286-4	COLLARED HEX.LOCK NUT M5-8	1				
044		347C46-6	LOCK WASHER 27	2				
045		347C47-4	ANGULAR HOLDER	1				
046		265487-5	H.S. BUTTON HEAD BOLT M5X16	1				
047		257761-5	SLEEVE 6	1				
048		347C45-8	LOCK WASHER 39	2				
049		312F28-5	SIDE COVER	1				
050		922128-3	HEX. SOCKET HEAD BOLT M4X16	1				
051		232868-8	CONED DISK SPRING 12	3				
052		253603-1	DISK WASHER 5	1				
053		922912-6	HEX. SOCKET HEAD BOLT M5X65	1				
054		922128-3	HEX. SOCKET HEAD BOLT M4X16	5				
055		312F27-7	PIPE HOLDER COVER 24	1				
056		911138-5	P.H.SCREW M4X20 WITH WR	1				

A:UN001GZ(N)

Interchange
O : Yes
X : No
< : the new part can be substituted for the current.
> : the current part can be substituted for the new.
S : Interchangeable as a set.

