



Battery Powered Pruning Shears DUP180



Cordless Pruning Saw

DUC150
18V
BL XPT



Battery Powered Pruning Shears

DUP362
18V x2
XPT



Cordless Earth Auger

DDG461
18V x2
BL ADT XPT



Battery Powered Wheelbarrow

DCU180
18V
BL XPT



DCU601
18V x2
BL XPT



DCU602
18V x2
BL XPT



DCU603
18V x2
BL XPT WG



DCU604
18V x2
BL XPT WG



DCU605
18V x2
BL WG



Accessories

Shear blade U set

Replacement upper blade for Pruning shears



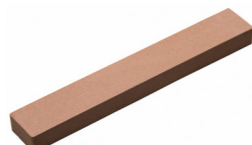
Shear blade L set

Replacement lower blade for Pruning shears



Dresser stone set

Dresser stone for Shear blade sharpening



Holster

Storage and carrying of the machine



MAKPAC TYPE3

For smart organization and easy transportation of power tools and accessories



Charging Time

Battery	Fast Charging	
	DC18RC	DC18SD
BL1815N 1.5Ah	15 min	30 min
BL1820B 2.0Ah	24 min	45 min
BL1830B 3.0Ah	22 min	60 min
BL1840B 4.0Ah	36 min	90 min
BL1850B 5.0Ah	45 min	110 min
BL1860B 6.0Ah	55 min	130 min

Battery Powered Pruning Shears

DUP180

- Brake
- Anti-restart function
- Torque Limiter
- Carrying Case

Capacity	Max cutting: 30 mm (1-3/16")
Vibration level	2.5 m/s ² or less
Sound pressure level	70 dB(A) or less
Dimensions* (L x W x H)	296 x 40 x 99 mm (11-5/8 x 1-9/16 x 3-7/8")
Net weight*	0.68 kg (1.5 lbs.)

*Without standard equipment such as battery, battery adapter, harness, and controller for operation

Standard Equipment :

Oil spray, Hex wrench, Socket wrench, Dressing stone, Holster, Battery, Charger



*When cutting ø15mm branches of Japanese cypress, with BL1860B battery

The weight according to EPTA-Procedure 01/2014 is shown in the table. Items of standard equipment and specifications may vary by country or area.

Makita Corporation

3-11-8 Sumiyoshi-cho, Anjo, Aichi, 446-8502 Japan

PRINTED IN JAPAN 202311





Max cutting capacity
Ø30mm
 Lightweight
0.68kg
 Tool only



Battery adapter

Cord length : 1.4m

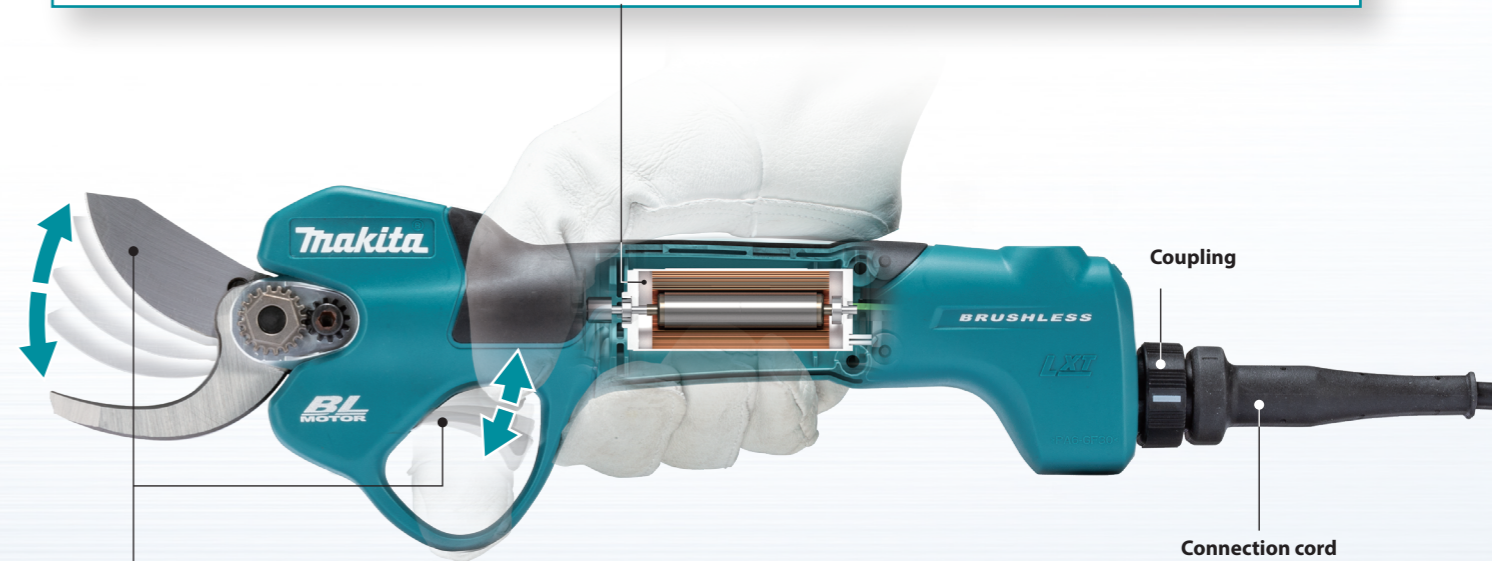
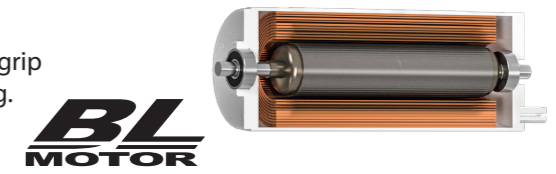
The battery is separated by the adapter to reduce hand and arm fatigue.



Slim and Lightweight design

The use of BL Coreless motor*¹ allows for reduction in the grip diameter and weight to reduce user's fatigue from pruning.

*¹ BL motor without iron core on which copper coil wire is wound



The blades work smoothly along with the trigger due to the sensor on the motor.

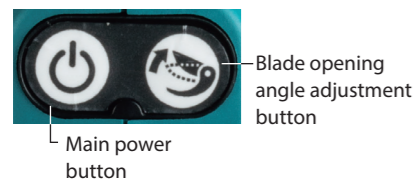
The blades respond to the trigger with sensitivity, ensuring a comfortable use experience.



Select from four angles to match branch thickness.

Thin branch ← → Thick branch

Ø10mm Ø18mm Ø25mm Ø30mm



Work amount on a full battery charge

When cutting Ø15mm branches of Japanese cypress

about **8,000 pcs**

Standby mode

To turn off the tool, pull and hold the switch trigger for more than 3 seconds to close the shear blades, then release the switch trigger, and then press the main power button.

LED indicator

Indicator lamp

- Power on
- Blinking: Battery capacity warning (when the capacity is 20% or less)
- Solid on: Error indication (No battery capacity/ Thermal protection/ Overload)



Adjustment of blade overlap when closed

(by pressing and holding Blade opening angle adjustment button for 3 seconds or more when fully closed)



External oil port

Lubrication oil can be injected without disassembling the blades.



XPT