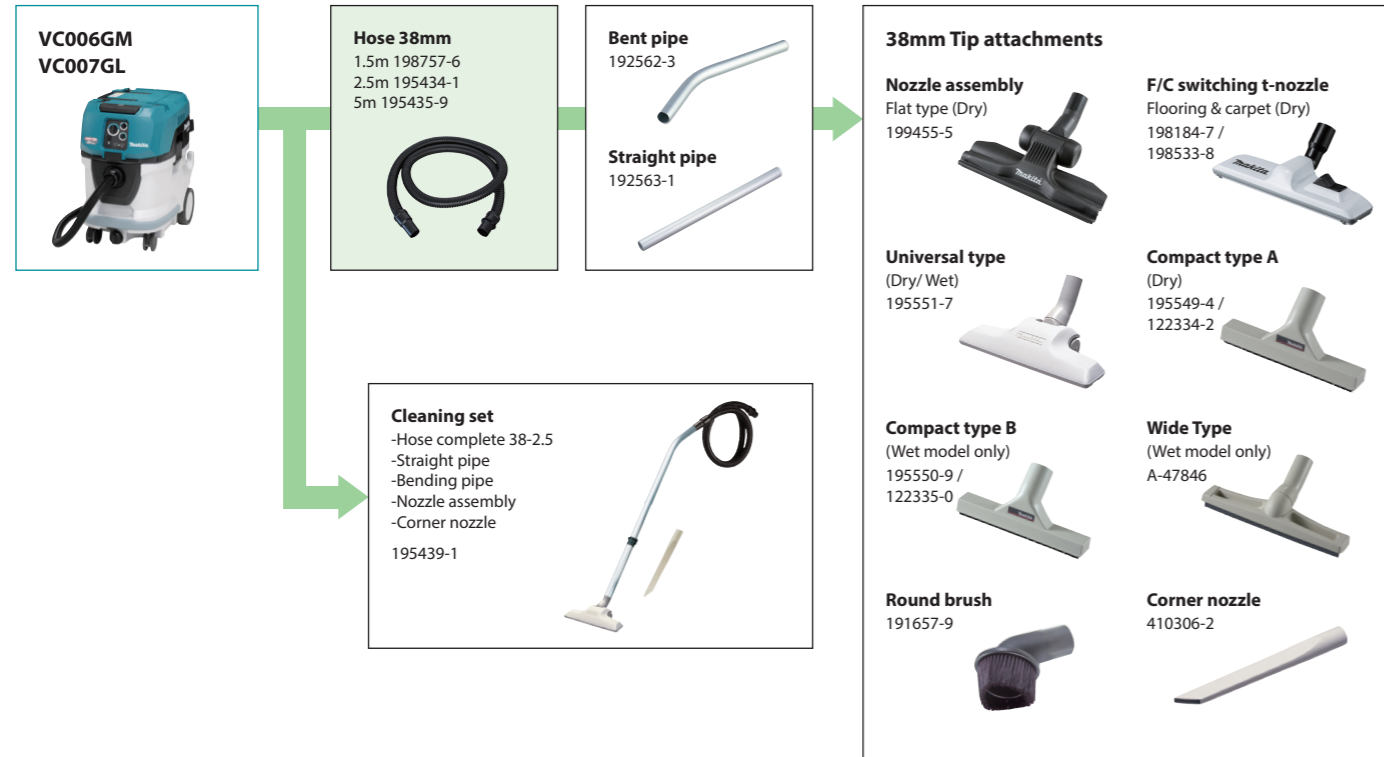


Accessories

System charts



Powder filter M set

Part No. 1911B6-0



Powder filter H set

Part No. 1911B7-8

HEPA filter with high efficiency in capturing dust and capability of capturing fine airborne dust.



Damper set

Part No. 1911B4-4

During automatic self-cleaning, this part pushes Pre-filter back to remove the dust adhering to the filter.



Pre filter set

Part No. 1911B5-2

A component part of Filter, which is made of material that allows for easy dust removal.



Filter for water set

Part No. 1910N0-0

This is a special filter designed for water suction applications. It uses a material that allows water to easily pass when a large amount of water is suctioned repeatedly.



Filter bag set (5 pcs)

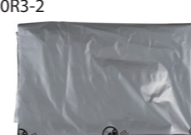
Part No. 1910Y4-9

35 L
With shutter of non-woven fabric



Poly bag set (10 pcs)

Part No. 1910R3-2



Charging Time

	Fast Charging			
	DC40RA	DC40RB	DC40RC	DC40WA
BL4020 2.0Ah	22 min	30 min	110 min	
BL4025 2.5Ah	28 min	38 min	130 min	
*1 BL4040 4.0Ah	45 min	67 min	210 min	
*1 BL4050F 5.0Ah	50 min	85 min	260 min	
*1 BL4080F 8.0Ah	76 min	170 min	420 min	

*1 Recommended battery

Cordless Vacuum Cleaner	
VC006GM / VC007GL	
Variable Speed	Capacity Dust / Water: 40 / 30 L
Revolving Hose	Max air flow w/ Hose 28-3.5: 2.0 m ³ /min
Static Free Hose	w/ Hose 38-2.5: 3.7 m ³ /min
	Max sealed suction 18 kPa
	Vibration level 2.5 m/s ² or less
	Sound pressure level 70 dB(A) or less
	Dimensions (L x W x H) 586 x 385 x 598 mm (23 x 15-1/8 x 23-1/2")
	Net weight VC006GM: 18.4 - 20.8 kg (40.6 - 45.9 lbs.)
	VC007GL: 18.3 - 20.7 kg (40.3 - 45.6 lbs.)
Standard Equipment: Floor nozzle, Straight pipe, Bent pipe, Hose, Dust bag (VC006GM), Poly bag set (VC007GL), Corner nozzle, Front cuffs (22, 24), Wireless unit, Cap, Joint, Battery, Charger	

The weight does not include accessories but battery cartridge(s). The lightest and heaviest combinations weight of the appliance and battery cartridge(s) are shown in the table. Items of standard equipment and specifications may vary by country or area.

Makita Corporation

3-11-8 Sumiyoshi-cho, Anjo, Aichi, 446-8502 Japan

PRINTED IN JAPAN 202212



photo: VC006GM, GA038G

Dust class M approved

VC006GM

Tank capacity
Dry / Wet
40 / 30 L



Dust class L approved

VC007GL

Tank capacity
Dry / Wet
40 / 30 L



Continuous use

Battery: BL4050F x2

[at dial Min] | [at dial Max]
80 min. | **25 min.**

Max air flow

Hose size: ø38mm x 2.5m | Hose size: ø28mm x 3.5m
3.7 m³/min. | **2.0 m³/min.**





For Dust Collecting

photo: VC007GL



For Cleaning

photo: VC006GM

High air flow similar to that of corded model

40Vmax XGTx2 (80Vmax) enables high air flow similar to that of corded models, and is particularly effective in applications where a large amount of airborne dust is generated.

Max air flow

Hose size: ø38mm x 2.5m | Hose size: ø28mm x 3.5m

3.7 m³/min. | **2.0 m³/min.**



photo: VC006GM

Continuous use

Battery: BL4050F x2

[at dial Min] | [at dial Max]

80 min. | **25 min.**



Automatic self-cleaning filter system

Automatically removes dust adhering to filter even in continuous use, reducing clogging of the filter to suppress decrease in suction power.



AWS Auto-start Wireless System - supported



Wireless unit not integrated with the cleaner's body

MAKPAC can be attached

- MAKPAC storage case can be attached directly without MAKPAC adapter.
- Max height: 315mm, Max weight: 20kg



Dust class M approved VC006GM only

- Dust permeability: less than 0.1% (according to EN60335-2-69)
- Built-in buzzer beeps to warn the user of low air flow, when the air flow decreases, in such a case as when filter is clogged or the tank is getting closer to a full tank.

With water drain

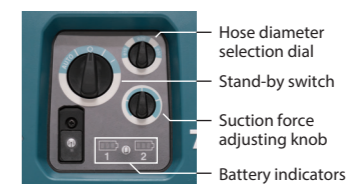


Large rear wheels



VC006GM

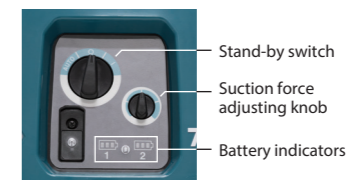
Dust type: Dry: 40L / Wet: 30L
Approval for dust class: M



BL MOTOR **AWS** **GYUPPA!** **XPT**

VC007GL

Dust type: Dry: 40L / Wet: 30L
Approval for dust class: L



HEPA filter **BL MOTOR** **AWS** **GYUPPA!** **XPT**