



| | |
|----|----------|
| TH | THAILAND |
|----|----------|

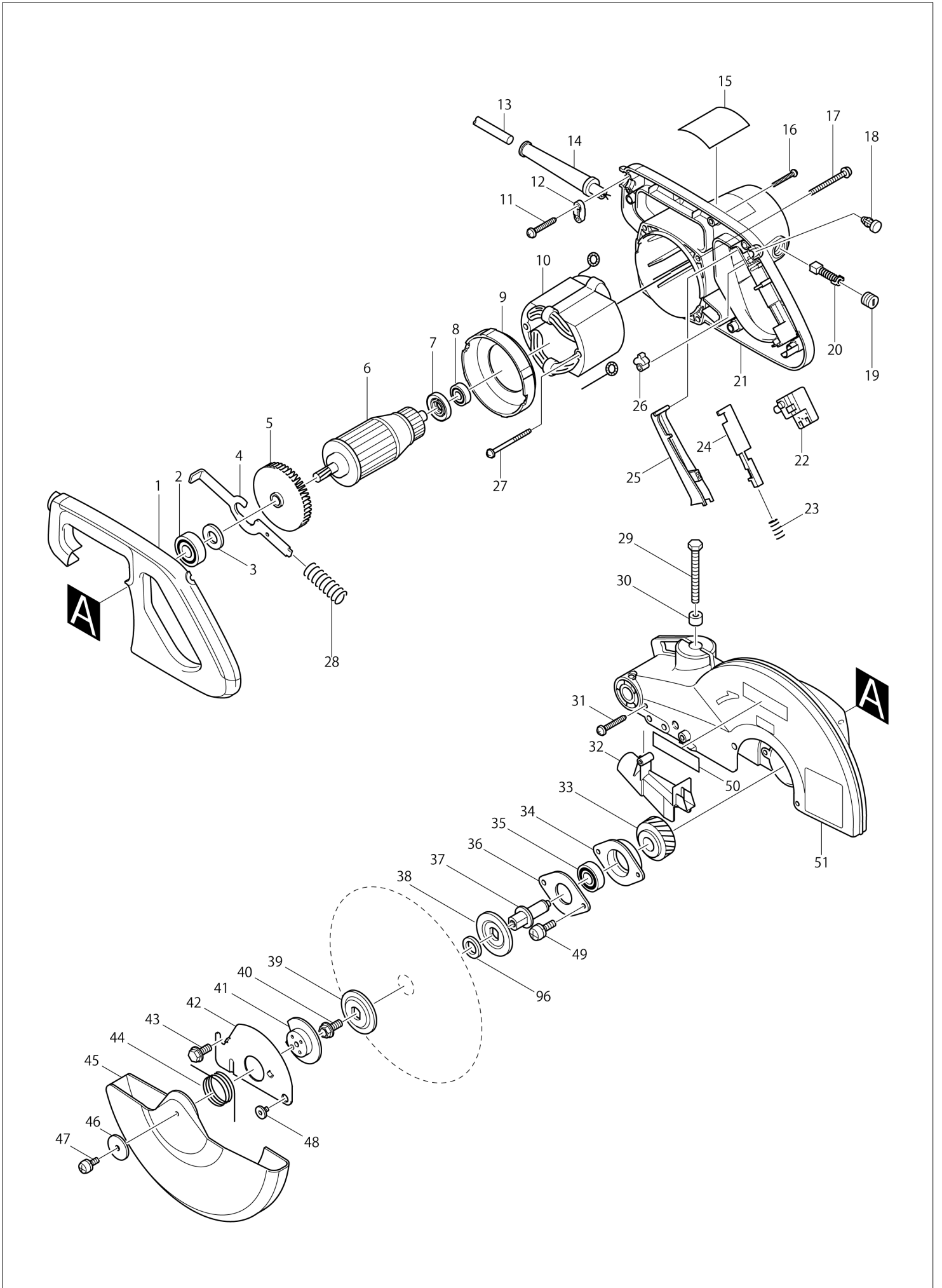
Diagram / Parts List

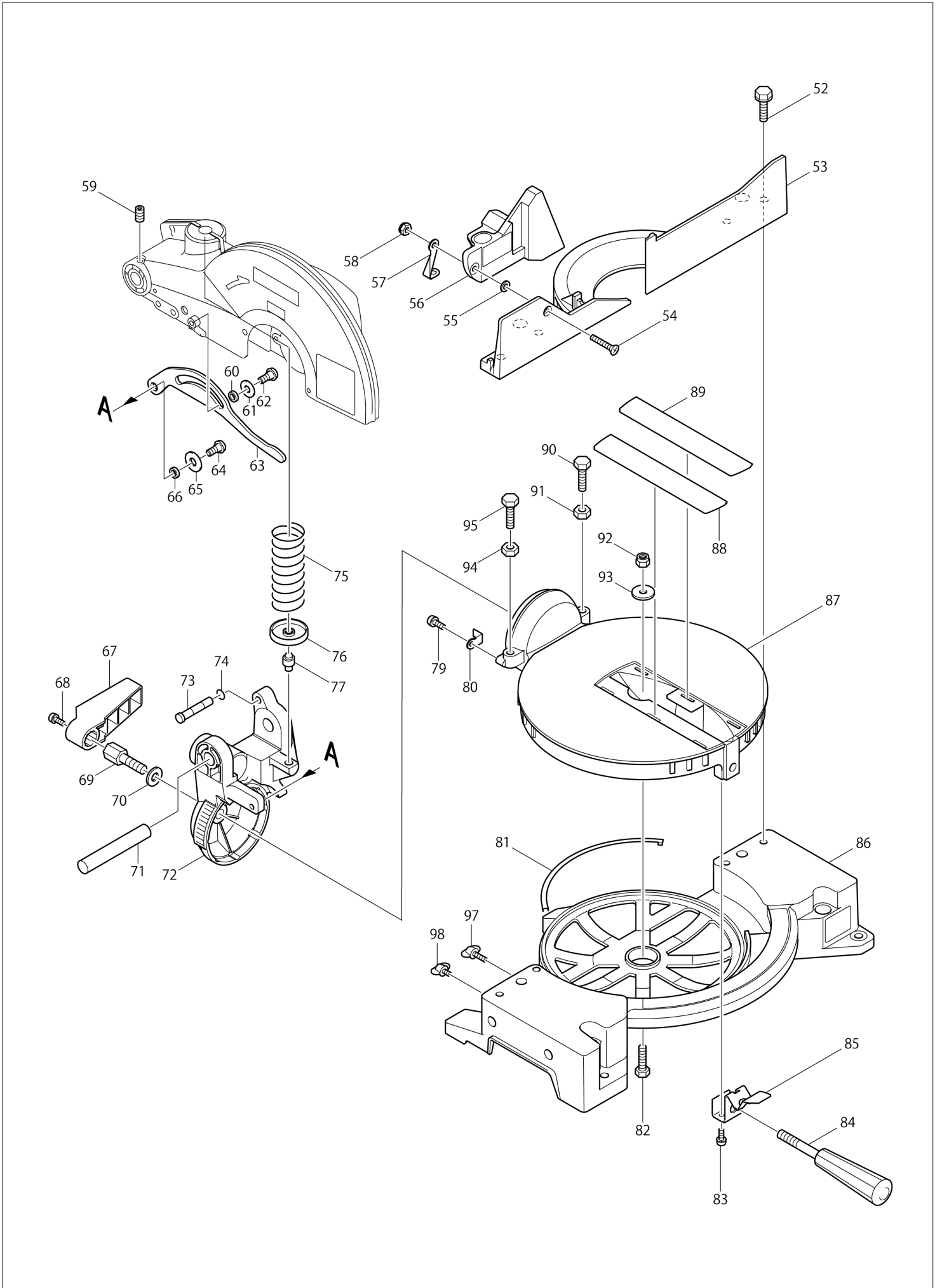
LS1040

MITER SAW 255MM



(TH) LS1040 / MITER SAW 255MM





| | |
|----|----------|
| TH | THAILAND |
|----|----------|

LS1040 / MITER SAW 255MM

| Item | Sub | Parts No. | Parts Description | Qty | I/C | E/C No. | Close No. | Remark |
|-------|-----|-----------|------------------------------|-----|-----|---------|-----------|--------|
| 001 | | 416004-6 | HANDLE COVER | 1 | | | C5361 | |
| 001-1 | | 458787-2 | HANDLE COVER | 1 | < | C5361 | | |
| 002 | | 211206-7 | BALL BEARING 6202LLB | 1 | | | | |
| 003 | | 253853-8 | FLAT WASHER 15 | 1 | | | 69242 | |
| 003-1 | | 267280-3 | FLAT WASHER 15 | 1 | < | 69242 | | |
| 004 | | 343641-2 | SHAFT LOCK | 1 | | | | |
| 005 | | 241909-9 | FAN 80 | 1 | | | | |
| 006A | | 516718-8 | ARMATURE ASS'Y 220V | 1 | | | C9046 | |
| | D10 | | INC. 2,3,5,7,8 | | | | C9046 | |
| 006A1 | | 516718-8 | ARMATURE ASS'Y 220V | 1 | O | C9046 | | |
| | D10 | | INC. 2,3,5,7,8 | | | C9046 | | |
| 007 | | 681640-9 | INSULATION WASHER | 1 | | | C9046 | |
| 007-1 | | 681640-9 | INSULATION WASHER | 1 | O | C9046 | | |
| 008 | | 211061-7 | BALL BEARING 6000LLB | 1 | | | | |
| 009A | | 416442-2 | BAFFLE PLATE | 1 | | | | |
| 010B | | 526068-3 | FIELD ASS'Y 220-240V | 1 | | | | |
| | C10 | 654020-2 | RING TERMINAL | 1 | | | | |
| | C20 | 654502-4 | CONNECTOR P-2 | 1 | | | | |
| 011 | | 265995-6 | TAPPING SCREW 4X18 | 2 | | | | |
| 012A | | 687053-2 | STRAIN RELIEF | 1 | | | A7453 | |
| 012A1 | | 687140-7 | STRAIN RELIEF | 1 | O | A7453 | | |
| 013I | | 691216-4 | POWER SUPPLY CORD 1.25-2-2.5 | 1 | | | | |
| 014 | | 682505-8 | CORD GUARD 10-90 | 1 | | | | |
| 015A2 | | 851559-8 | NAME PLATE LS1040 | 1 | | | C5138 | |
| 015A3 | | 855H16-6 | LS1040 NAME PLATE | 1 | < | C5138 | | |
| 016 | | 265995-6 | TAPPING SCREW 4X18 | 5 | | | | |
| 017 | | 911383-2 | PAN HEAD SCREW M6X60 | 4 | | | | |
| 018 | | 411478-6 | SWITCH BUTTON | 1 | | | DH041 | |
| 018-1 | | 417113-4 | SWITCH BUTTON | 1 | O | DH041 | | |
| 019 | | 643650-4 | BRUSH HOLDER CAP 6.5-13.5 | 2 | | | B0305 | |
| 019-1 | | 643650-4 | BRUSH HOLDER CAP 6.5-13.5 | 2 | O | B0305 | | |
| 020A | | 181044-0 | CARBON BRUSH CB-153 | 1 | | | 85070 | |
| 020A1 | | B-80329 | CARBON BRUSH SET CB-153A | 1 | < | 85070 | | |
| 021B | | 150784-1 | MOTOR HOUSING COMPLETE | 1 | | | 69833 | |
| | C10 | 817880-5 | CAUTION LABEL | 1 | | | 69833 | |
| | C20 | 643660-1 | BRUSH HOLDER 6.5-13.5 | 2 | | | 69833 | |
| 021B1 | | 153792-1 | MOTOR HOUSING COMPLETE | 1 | < | 69833 | | |
| | C10 | 817880-5 | CAUTION LABEL | 1 | | 69833 | | |
| | C20 | 643660-1 | BRUSH HOLDER 6.5-13.5 | 2 | | 69833 | 74692 | |
| | C21 | 643653-8 | BRUSH HOLDER 6.5-13.5 | 2 | O | 74692 | C7740 | |
| | C22 | 643536-2 | BRUSH HOLDER 6.5X13.5 | 2 | O | C7740 | | |
| 022 | | 651923-1 | SWITCH TG70B | 1 | | | | |
| 023 | | 231457-6 | COMPRESSION SPRING 3 | 1 | | | | |
| 024 | | 416000-4 | LOCK OFF LEVER | 1 | | | | |
| 025 | | 415999-0 | SWITCH LEVER | 1 | | | C5138 | |
| 025-1 | | 459017-4 | SWITCH LEVER | 1 | < | C5138 | | |
| 026 | | 414546-4 | CAM | 1 | | | | |
| 027 | | 266029-8 | TAPPING SCREW 5X65 | 2 | | | | |
| 028 | | 231297-2 | COMPRESSION SPRING 9 | 1 | | | | |
| 029 | | 251667-9 | HEX. BOLT M8X75 | 1 | | | | |
| 030 | | 262511-5 | RUBBER SLEEVE 6 | 1 | | | | |
| 031 | | 265995-6 | TAPPING SCREW 4X18 | 1 | | | | |
| 032 | | 416007-0 | GUIDE COVER | 1 | | | 93598 | |
| 032-1 | | 453695-2 | GUIDE COVER | 1 | < | 93598 | | |
| 033 | | 226465-0 | HELICAL GEAR 42 | 1 | | | | |
| 034 | | 316821-3 | BEARING BOX | 1 | | | | |
| 035 | | 211256-2 | BALL BEARING 6203LLB | 1 | | | | |
| 036 | | 285685-5 | BEARING RETAINER 64 | 1 | | | | |
| 037 | | 322865-3 | SPINDLE | 1 | | | | |
| 038 | | 224333-1 | FLANGE 53 | 1 | | | | |
| 039 | | 224333-1 | FLANGE 53 | 1 | | | | |
| 040 | | 265355-2 | HEX. FLANGE HEAD BOLT M8X20 | 1 | | | | |
| 041 | | 343639-9 | CENTER PLATE | 1 | | | | |
| 042 | | 344380-7 | CENTER COVER | 1 | | | | |
| 043 | | 265324-3 | HEX. FLANGE HEAD BOLT M8X12 | 1 | | | | |

A:
B:LS1040(H)

Interchange
O : Yes
X : No
< : the new part can be substituted for the current.
> : the current part can be substituted for the new.
S : Interchangeable as a set.

| | |
|----|----------|
| TH | THAILAND |
|----|----------|

LS1040 / MITER SAW 255MM

| Item | Sub | Parts No. | Parts Description | Qty | I/C | E/C No. | Close No. | Remark |
|-------|-----|-----------|--------------------------------|-----|-----|---------|-----------|--------|
| 044 | | 231593-8 | TORSION SPRING 36 | 1 | | | | |
| 045 | | 416003-8 | SAFETY COVER | 1 | | | | |
| 046 | | 267136-0 | FLAT WASHER 5 | 1 | | | | |
| 047 | | 911213-7 | PAN HEAD SCREW M5X12 | 1 | | | B0386 | |
| 047-1 | | 922211-6 | H.S.H.BOLT M5X12 WITH W | 1 | < | B0386 | | |
| 048 | | 265985-9 | HEX.SOCKET HEAD BOLT M6 | 1 | | | | |
| 049 | | 911223-4 | PAN HEAD SCREW M5X16 | 2 | | | | |
| 050 | | 819064-1 | MAKITA MARK | 1 | | | 57713 | |
| 051 | | 151451-1 | BLADE CASE COMPLETE | 1 | | | 70207 | |
| | C10 | 817667-5 | CAUTION LABEL | 1 | | | 70207 | |
| | C20 | 817829-5 | CAUTION LABEL | 1 | | | 70207 | |
| | C30 | 263005-3 | RUBBER PIN 6 | 1 | | | 70207 | |
| 051-1 | | 151451-1 | BLADE CASE COMPLETE | 1 | O | 70207 | 78401 | |
| | C10 | 817667-5 | CAUTION LABEL | 1 | | 70207 | 78401 | |
| | C20 | 817829-5 | CAUTION LABEL | 1 | | 70207 | 78401 | |
| | C30 | 263005-3 | RUBBER PIN 6 | 1 | | 70207 | 78401 | |
| 051-2 | | 188324-5 | BLADE CASE SET | 1 | O | 78401 | 81564 | |
| | C40 | 819214-8 | MAKITA LOGO LABEL | 1 | | 78401 | 81564 | |
| | C10 | 817667-5 | CAUTION LABEL | 1 | | 78401 | 81564 | |
| | C20 | 817829-5 | CAUTION LABEL | 1 | | 78401 | 81564 | |
| | C30 | 263005-3 | RUBBER PIN 6 | 1 | | 78401 | 81564 | |
| 051-3 | | 188324-5 | BLADE CASE SET | 1 | O | 81564 | 91038 | |
| | C40 | 819214-8 | MAKITA LOGO LABEL | 1 | | 81564 | 91038 | |
| | C10 | 816847-0 | OPERATIONAL INDICATION LABEL | 1 | < | 81564 | 91038 | |
| | C20 | 817829-5 | CAUTION LABEL | 1 | | 81564 | 91038 | |
| | C30 | 263005-3 | RUBBER PIN 6 | 1 | | 81564 | 91038 | |
| 051-4 | | 140648-7 | BLADE CASE COMPLETE | 1 | O | 91038 | | |
| | C10 | 816847-0 | OPERATIONAL INDICATION LABEL | 1 | | 91038 | | |
| | C20 | 891309-9 | CAUTION LABEL | 1 | | 91038 | | |
| | C30 | 263005-3 | RUBBER PIN 6 | 1 | | 91038 | | |
| 052 | | 921451-3 | HEX. BOLT M8X30 | 4 | | | 63448 | |
| 052-1 | | 265488-3 | HEX. BOLT M8X30 | 4 | O | 63448 | | |
| 053 | | 316826-3 | GUIDE RULE | 1 | | | 70207 | |
| 053-1 | | 316826-3 | GUIDE RULE | 1 | O | 70207 | 93598 | |
| 053-2 | | 318847-1 | GUIDE RULE | 1 | < | 93598 | | |
| 054 | | 912342-9 | COUNTERSUNK HEAD SCREW M6X25 | 1 | | | | |
| 055 | | 253715-0 | FLAT WASHER 6 | 1 | | | | |
| 056 | | 150662-5 | SUB FENCE COMPLETE | 1 | | | 70207 | |
| | C10 | 810857-9 | CAUTION LABEL | 1 | | | 70207 | |
| 056-1 | | 150662-5 | SUB FENCE COMPLETE | 1 | O | 70207 | | |
| | C10 | 810857-9 | CAUTION LABEL | 1 | | 70207 | | |
| 057 | | 344476-4 | SUB FENCE PLATE | 1 | | | | |
| 058 | | 252014-7 | HEX. LOCK NUT M6-10 | 1 | | | | |
| 059 | | 251961-9 | H.S.SET SCREW(FLAT POINT)M6X10 | 1 | | | | |
| 060 | | 257162-7 | RING 7 | 1 | | | | |
| 061 | | 253823-7 | FLAT WASHER 7 | 1 | | | | |
| 062 | | 265984-1 | HEX.SOCKET BUTTON HEAD BOLT M6 | 1 | | | | |
| 063 | | 344377-6 | LINK PLATE | 1 | | | | |
| 064 | | 265984-1 | HEX.SOCKET BUTTON HEAD BOLT M6 | 1 | | | | |
| 065 | | 253823-7 | FLAT WASHER 7 | 1 | | | | |
| 066 | | 257162-7 | RING 7 | 1 | | | | |
| 067 | | 416006-2 | LEVER 100 | 1 | | | | |
| 068 | | 911113-1 | PAN HEAD SCREW M4X10 WITH WR | 1 | | | | |
| 069 | | 265437-0 | HEX. BOLT M10 | 1 | | | | |
| 070 | | 253024-7 | FLAT WASHER 10 | 1 | | | | |
| 071 | | 256836-7 | ROD 16 | 1 | | | | |
| 072 | | 150664-1 | ARM COMPLETE | 1 | | | 70207 | |
| | C10 | 816310-3 | SCALE LABEL | 1 | | | 70207 | |
| 072-1 | | 150664-1 | ARM COMPLETE | 1 | O | 70207 | 70926 | |
| | C10 | 816310-3 | SCALE LABEL | 1 | | 70207 | 70926 | |
| 072-2 | | 154463-3 | ARM COMPLETE | 1 | O | 70926 | | |
| | C10 | 816310-3 | SCALE LABEL | 1 | | 70926 | | |
| 073 | | 322317-4 | STOPPER PIN | 1 | | | | |
| 074 | | 213021-5 | O RING 5 | 1 | | | | |
| 075 | | 233152-4 | COMPRESSION SPRING 28 | 1 | | | | |

A:
B:LS1040(H)

Interchange
O : Yes
X : No
< : the new part can be substituted for the current.
> : the current part can be substituted for the new.
S : Interchangeable as a set.

| | |
|----|----------|
| TH | THAILAND |
|----|----------|

LS1040 / MITER SAW 255MM

| Item | Sub | Parts No. | Parts Description | Qty | I/C | E/C No. | Close No. | Remark |
|--------|-----|-----------|--------------------------------|-----|-----|---------|-----------|--------|
| 076 | | 343638-1 | SPRING HOLDER | 1 | | | | |
| 076-1 | | 344464-1 | SPRING HOLDER | 1 | S | 55908 | | |
| 077A | | 256260-4 | PIN 8 | 1 | | | | |
| 077A1 | | 256280-8 | PIN 8 | 1 | S | 55908 | | |
| 079 | | 911113-1 | PAN HEAD SCREW M4X10 WITH WR | 1 | | | | |
| 080 | | 344385-7 | POINTER | 1 | | | | |
| 081 | | 343799-7 | SLIDE PLATE | 3 | | | | |
| 082 | | 921452-1 | HEX. BOLT M8X30 | 1 | | | | |
| 083 | | 911213-7 | PAN HEAD SCREW M5X12 | 2 | | | | |
| 084 | | 273495-2 | GRIP 32 | 1 | | | | |
| 085 | | 344381-5 | KNOCK SPRING | 1 | | | | |
| 086 | | 150585-7 | BASE COMPLETE | 1 | | | 70207 | |
| | C10 | 816311-1 | MITER SCALE PLATE | 1 | | | 70207 | |
| | C20 | 817837-6 | CAUTION LABEL | 1 | | | 70207 | |
| | C30 | 817283-3 | CAUTION LABEL | 2 | | | 70207 | |
| 086-1 | | 150585-7 | BASE COMPLETE | 1 | O | 70207 | | |
| | C10 | 816311-1 | MITER SCALE PLATE | 1 | | 70207 | | |
| | C20 | 817837-6 | CAUTION LABEL | 1 | | 70207 | | |
| | C30 | 817283-3 | CAUTION LABEL | 2 | | 70207 | | |
| 087 | | 316824-7 | TURN BASE | 1 | | | 70207 | |
| 087-1 | | 316824-7 | TURN BASE | 1 | O | 70207 | | |
| 088 | | 416001-2 | KERF BOARD | 1 | | | | |
| 089 | | 416001-2 | KERF BOARD | 1 | | | | |
| 090 | | 921452-1 | HEX. BOLT M8X30 | 1 | | | | |
| 091 | | 931402-8 | HEX. NUT M8 | 1 | | | | |
| 092 | | 252105-4 | HEX. LOCK NUT M8-13 | 1 | | | | |
| 093-1 | | 253762-1 | FLAT WASHER 8 | 1 | | | | |
| 094 | | 931402-8 | HEX. NUT M8 | 1 | | | | |
| 095 | | 921452-1 | HEX. BOLT M8X30 | 1 | | | | |
| 096 | | 257060-5 | RING 15.8 | 1 | | | | |
| 097 | | 251887-5 | SCREW M6X10 | 1 | | | | |
| 098 | | 265708-5 | THUMB SCREW M6X20 | 2 | | | | |
| A01 | | 411478-6 | SWITCH BUTTON | 2 | | | C5138 | |
| A02 | | 762001-3 | TRIANGULAR RULE | 1 | | | | |
| A03 | | 782212-4 | SOCKET WRENCH 13 | 1 | | | | |
| A04 | | 122523-9 | DUST BAG ASS'Y | 1 | | | A7105 | |
| | C10 | 410602-8 | FASTENER | 1 | | | A7105 | |
| A04-1 | | 122852-0 | DUST BAG ASS'Y | 1 | O | A7105 | | |
| | C10 | 410602-8 | FASTENER | 1 | | A7105 | | |
| A05 | | 122531-0 | SUB PLATE ASS'Y | 1 | | | 63999 | |
| | C10 | 252148-6 | SQUARE NUT M8 | 1 | | | 63999 | |
| | C20 | 921431-9 | HEX. BOLT M8X20 | 1 | | | 63999 | |
| A05-1 | | 193471-9 | SUB PLATE ASS'Y | 1 | O | 63999 | | |
| | C10 | 252148-6 | SQUARE NUT M8 | 1 | | 63999 | | |
| | C20 | 921431-9 | HEX. BOLT M8X20 | 1 | | 63999 | | |
| A06 | | 122536-0 | WISE ASS'Y | 1 | | | | |
| | C10 | 251370-2 | + PAN HEAD SCREW M5 | 1 | | | | |
| | C20 | 251887-5 | SCREW M6X10 | 1 | | | | |
| | C30 | 253804-1 | FLAT WASHER 6 | 1 | | | | |
| | C40 | 271286-5 | KNOB 40 | 1 | | | | |
| | C50 | 316938-2 | WISE ARM | 1 | | | | |
| | C60 | 322313-2 | WISE ROD | 1 | | | | |
| | C70 | 343651-9 | WISE PLATE | 1 | | | | |
| A07 | | 257022-3 | RING 16 | 1 | | | | |
| A08 | | 322312-4 | HOLDER | 2 | | | | |
| A09A | | A-81614 | T.C.T. SAW BLADE 255X100TX25.4 | 1 | | 72207 | 73470 | |
| A09-1A | | A-82030 | T.C.T. SAW BLADE 255X30TX25.4 | 1 | X | 73470 | | |
| B01 | | 192621-3 | HOLDER SET | 1 | | Y07972 | | |
| | D10 | | INC. 098,A08 | | | Y07972 | | |
| E05 | | 651941-9 | SWITCH V-15-2A5 | 1 | | | | |
| F01 | | 192622-1 | CROWN MOLDING STOPPER SET | 0 | | | | |
| F21-1 | | 198688-9 | STAND SET | 1 | < | B7502 | | |
| F55-3 | | 198687-1 | STAND SET | 1 | < | D7285 | | |

A:
B:LS1040(H)

Interchange
O : Yes
X : No
< : the new part can be substituted for the current.
> : the current part can be substituted for the new.
S : Interchangeable as a set.