



TH	THAILAND
----	----------

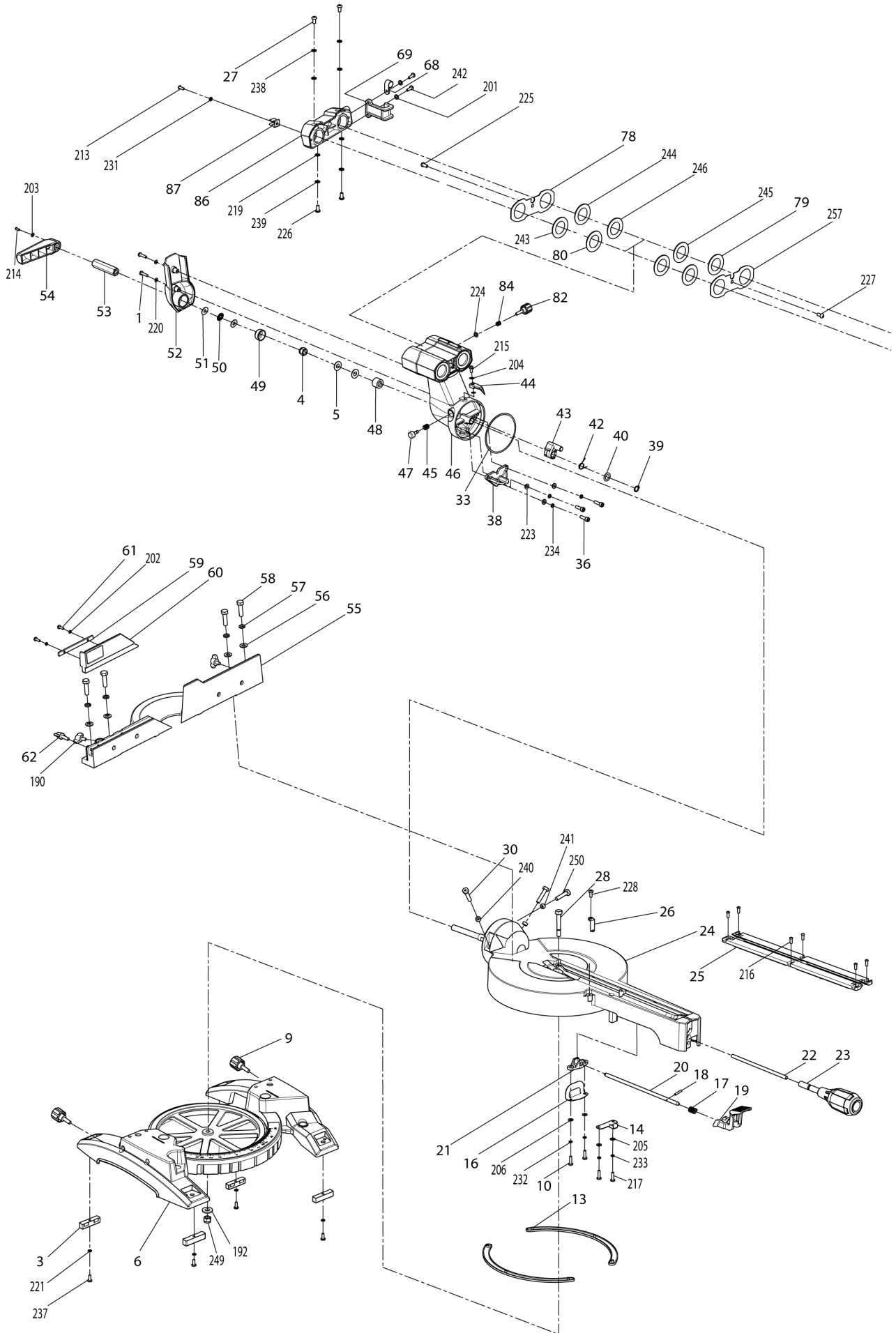
Diagram / Parts List

LS1017L

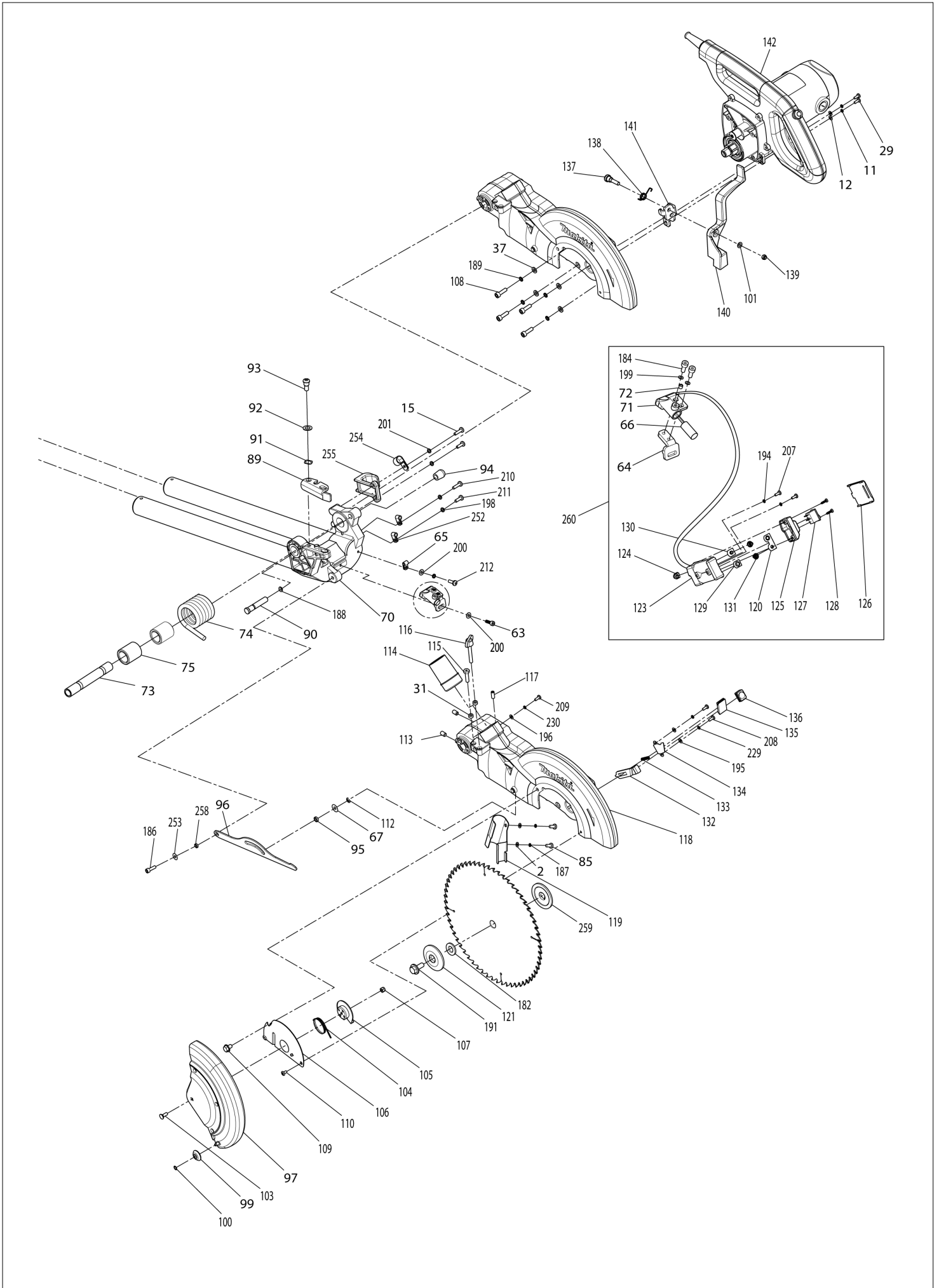
260MM SLIDE COMPOUND MITER SAW



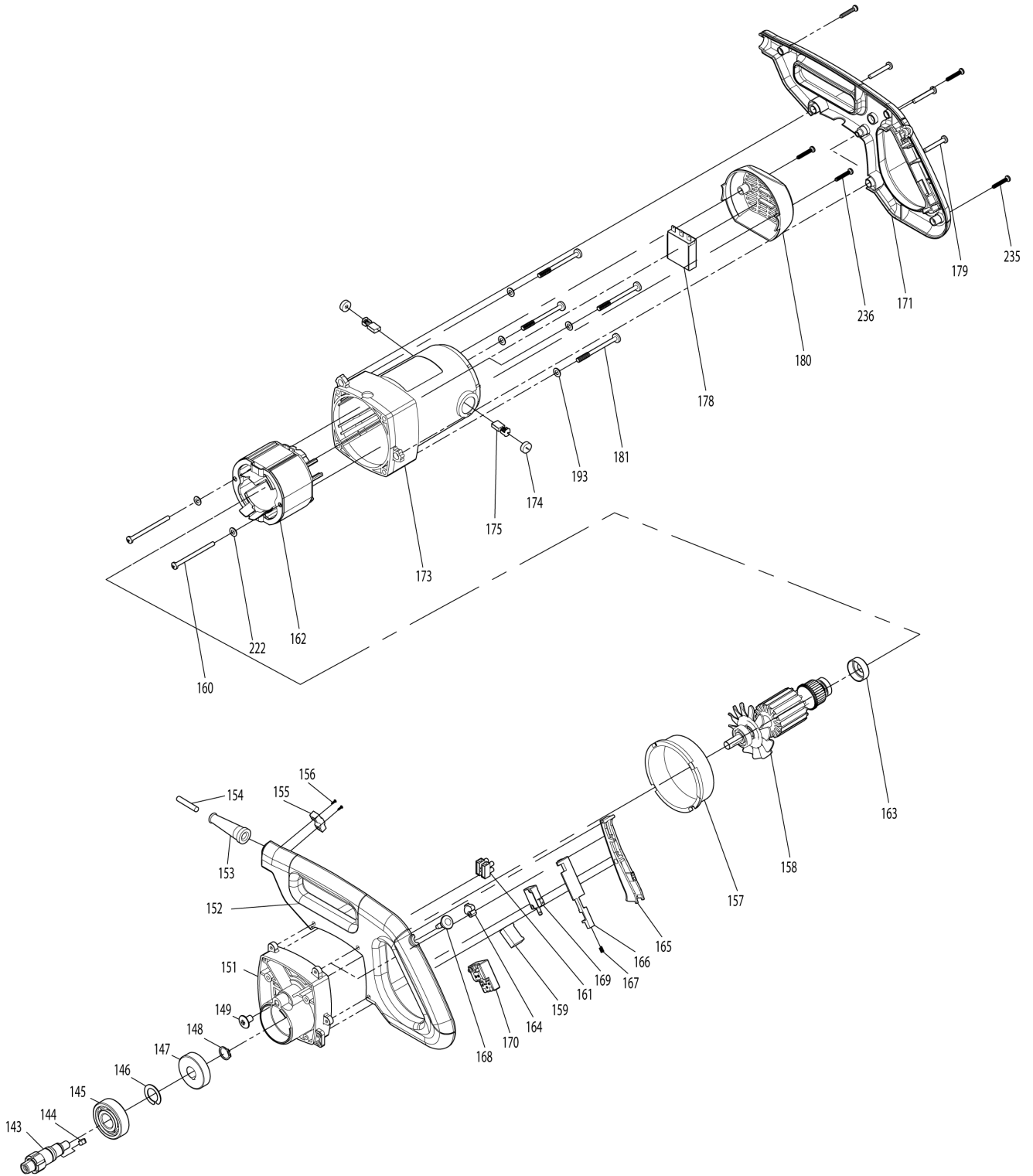
(TH) LS1017L / 260MM SLIDE COMPOUND MITER SAW



(TH) LS1017L / 260MM SLIDE COMPOUND MITER SAW



(TH) LS1017L / 260MM SLIDE COMPOUND MITER SAW



TH	THAILAND
----	----------

LS1017L / 260MM SLIDE COMPOUND MITER SAW

Item	Sub	Parts No.	Parts Description	Qty	I/C	E/C No.	Close No.	Remark
001		JM23100006	CROSS HEAD SCREW M5X20	2				
002		JM23100007	FLAT WASHER 5	2				
003		JM23100008	PAD	4				
004		JM23100009	HEX LOCK NUT M10	1				
005		JM23100010	FLAT WASHER 10	2			Y08325	
005-1		JM23100010	FLAT WASHER 10	1	O	Y08325		
006		JM23100300	BASE COMPLETE	1				
	C10	JM2708A060	CAUTION LABEL	2			Y08325	
	C20	JM23100012	MITER SCALE LABEL	1		Y06583	Y08347	
	D10		INC. 7				Y06583	
	D11		INC. 295, 301			Y08347		
007		JM23100012	MITER SCALE LABEL	1			Y06583	
009		JM23100013	KNOB FOR EXT.WING	2				
010		JM23100014	CROSS HEAD SCREW M4X15	2				
013		JM23100017	FRICITION PLATE	2				
014		JM23100018	LOCK PLATE A	1				
015		JM23100019	CROSS HEAD SCREW M4X18	2			Y08325	
015-1		JM23100019	CROSS HEAD SCREW M4X18	1	O	Y08325		
016		JM23100020	LOCK PLATE B	1				
017		JM23100021	LOCK SPRING	1				
018		JM23100022	LOCK PIN	1				
019		JM23100023	PRESS PLATE	1				
020		JM23100024	LOCK SHAFT B	1				
021		JM23100025	WORKING TABLE LOCKING BRACKET	1				
022		JM23100026	LOCK SHAFT A	1				
023		JM23100027	MITER LOCKING HANDLE	1				
024		JM23100310	WORKING TABLE COMPLETE	1				
	C10	JM23100036	BEVEL SCALE	1		Y06583	Y08347	
	C20	JM23100038	ELASTIC PIN 4X20	1		Y06583	Y08325	
	C30	JM23100039	LOCKING ROD	1		Y06583	Y08325	
	C40	JM23100009	HEX LOCK NUT M10	1		Y06583	Y08325	
	D10		INC. 32,34,35				Y06583	
	D11		INC.280-283			Y08325	Y08347	
	D12		INC. 280-283, 300			Y08347		
025		JM23100029	TABLE INSERT	2			Y09262	
025-1		JM00000430	KERF BOARD	2	O	Y09262		
026		JM23100030	MITER POINTER	1				
027		JM23100031	CROSS HEAD SCREW M5X15	2				
028		JM23100032	PIVOT SHAFT	1				
030		JM23100034	HEX BOLT M6X28	1				
031		JM23100035	ANTI-LOOSEN RING	2			Y08325	
031-1		JM23100035	ANTI-LOOSEN RING	1	O	Y08325		
032		JM23100036	BEVEL SCALE	1			Y06583	
033		JM23100037	FRICITION RING	1				
034		JM23100038	ELASTIC PIN 4X20	1			Y06583	
035		JM23100039	LOCKING ROD	1			Y06583	
036		JM23100040	H.S.BOLT M6X20	3				
037		JM23100041	FLAT WASHER 6	4				
038		JM23100042	45DEGREE LIMIT BRACKET	1				
039		JM23100043	RETAINING RING 10	1			Y08325	
039-1		JM27100102	RETAINING RING S-12	1	X	Y08325		
040		JM23100044	FLAT WASHER 12X20X1	1				
041		JM23100045	ANGLE LIMIT SHAFT	1			Y06583	
041-1		JM23100045	ANGLE LIMIT SHAFT	1		Y07975		
042		JM23100046	90DEGREE BLOCK SPRING	1				
043		JM23100047	90DEGREE BLOCK	1				
044		JM23100048	BEVEL POINTER	1				
045		JM23100049	MITER PRESSION SPRING	1				
046		JM23100330	SUPPORT ARM COMPLETE	1			Y08953	
	C10	JM23100045	ANGLE LIMIT SHAFT	1		Y06583	Y07975	
	C20	JM23100081	BUFFER A	1		Y06583	Y08325	
	C30	JM23100085	LINEAR BEARING	1		Y06583	Y08325	
	C40	JM23100087	HEX SOCKET SET SCREW M6X8	1		Y06583	Y08325	
	C50	JM23100081	BUFFER A	1		Y06583	Y08325	
	D10		INC. 77,79-81,83,243-246,256				Y06583	

A:

Interchange
O : Yes
X : No
< : the new part can be substituted for the current.
> : the current part can be substituted for the new.
S : Interchangeable as a set.

LS1017L / 260MM SLIDE COMPOUND MITER SAW

Item	Sub	Parts No.	Parts Description	Qty	I/C	E/C No.	Close No.	Remark
	D11		INC. 79-80,243-246			Y06583	Y08325	
	D12		INC.79-80,243-246,290-294			Y08325	Y08953	
046-1		JM00000415	SUPPORT ARM COMPLETE	1	O	Y08953		
	D12		INC.79-80,243-246,290-294			Y08953		
047		JM23100051	LIMITED KNOB	1				
048		JM23100052	CLAMP PLATE	1				
049		JM23100053	BOWL TYPE PLATE	1				
050		JM23100054	SURFACE BEARING	1				
051		JM23100055	BIG FLAT WASHER 10X26X2.5	2			Y08325	
051-1		JM23100055	BIG FLAT WASHER 10X26X2.5	1	O	Y08325		
052		JM23100056	SLIDING BRACKET COVER	1				
053		JM23100057	HEX NUT	1				
054		JM23100058	BEVEL LOCKING HANDLE	1				
055		JM23100059	RIP FENCE	1				
056		JM23100060	FLAT WASHER 8	4				
057		JM23100061	SPRING WASHER 8	4				
058		JM23100062	HEX BOLT M8X30	4				
059		JM23100063	KEY	1				
060		JM23100320	SUB FENCE COMPLETE	1				
	C10	JM23180060	CAUTION LABEL	1			Y08347	
	D10		INC. 302,303			Y08347		
061		JM23100065	PAN HEAD SCREW M4X8	2				
062		JM23100066	WING KNOB M6X20	1				
063		JM23100067	H.S.BOLT M4X12	1			Y08325	
063-1		JM23100146	H.S.BOLT M4X10	1	X	Y08325		
064		JM23100068	LASER MOVING FIX PLATE	1				
065		JM23100069	LASER CORD CLAMP	1				
066		JM23100070	LASER	1				
067		JM23100071	THIN FLAT WASHER 6	1				
068		JM23100072	CORD CLAMP	1				
069		JM23100073	CORD WRAP BRACKET	1				
070		JM23100340	UP BLADE GUARD BRACKET	1			Y05758	
	C10	JM23180059	CAUTION LABEL	1			Y05758	
	D10		INC. 76,183				Y05758	
070-1		JM23100342	UP BLADE GUARD BRACKET CMPLT	1	O	Y05758		
	C10	JM23100145	ELASTIC PIN 5X30	2		Y06583		
	C20	JM23180059	CAUTION LABEL	1		Y05758		
	D10		INC. 76,183			Y05758	Y06583	
071		JM23100075	LASER BASE	1				
072		JM23100076	H.S.SCREW M4X10	1			Y08325	
072-1		JM23300038	HEX SOCKET SET SCREW M4X6	1	X	Y08325		
073		JM23100077	CONNECTION SHAFT	1				
074		JM23100078	TORSION SPRING	1				
075		JM23100079	LOCATION TUBE	2				
076		JM23100080	SLIDING BAR	2			Y05862	
077		JM23100081	BUFFER A	1			Y06583	
078		JM23100082	BEARING BAFFLE	1				
079		JM23100083	LIMITED BRACKET	2				
080		JM23100084	DUSTPROOF RING	1				
081		JM23100085	LINEAR BEARING	3			Y06583	
082		JM23100086	SLIDING BAR LOCKING KNOB	1				
083		JM23100087	HEX SOCKET SET SCREW M6X8	2			Y06583	
084		JM23100088	PRESSURE SPRING	1				
085		JM23100089	CROSS HEAD SCREW M5X12	2				
086		JM23100090	SLIDING BAR REAR COVER	1				
087		JM23100091	WRENCH CLIP	1				
089		JM23100092	CUTTING DEPTH ADJUSTABLE PLATE	1				
090		JM23100093	PIN C	1			Y05758	
090-1		JM23100193	PIN C	1	O	Y05758		
091		JM23100094	WAVE WASHER 8	1				
092		JM23100095	FLAT WASHER 8X14X1	1				
093		JM23100096	DEPTH ADJUSTABLE PLATE BOLT	1				
094		JM23100097	PIN CAP	1				
095		JM23100098	LINK SLEEVE	1				
096		JM23100099	LINK	1				

A:

Interchange
O : Yes
X : No
< : the new part can be substituted for the current.
> : the current part can be substituted for the new.
S : Interchangeable as a set.

TH	THAILAND
-----------	-----------------

LS1017L / 260MM SLIDE COMPOUND MITER SAW

Item	Sub	Parts No.	Parts Description	Qty	I/C	E/C No.	Close No.	Remark
097		JM23100350	LOWER BLADE GUARD COMPLETE	1			Y08325	
	C10	JM23100101	GUARD RIVET	3		Y06583	Y07419	
	C20	JM23100105	LOWER BLADE GUARD PLATE	1		Y06583	Y07419	
	C30	JM23100104	FLAT WASHER 5	3		Y06583	Y07419	
	D10		INC. 97,98,101,102				Y06583	
	D11		INC. 101			Y06583	Y07340	
097-1		JM23210008	LOWER BLADE GUARD COMPLETE	1	X	Y08325		
098		JM23100101	GUARD RIVET	3			Y06583	
099		JM23100102	GUARD WHEEL	1				
100		JM23100103	WHEEL LOCK RING	1				
102		JM23100105	LOWER BLADE GUARD PLATE	1			Y06583	
103		JM23100106	SQUARE NECK BOLT M6X12	1				
104		JM23100107	GUARD SPRING	1				
105		JM23100108	BOWL PLATE	1				
106		JM23100109	GUARD FIX PLATE	1				
107		JM23100110	HEX LOCK NUT M6	1				
108		JM23100111	H.S.BOLT M6X45	4				
109		JM23100112	HEX BOLT FOR GUARD	1				
110		JM23100113	CROSSHEAD SCREW FOR GUARD	1				
111		JM23100114	LINK PIN	1			Y06583	
112		JM23100115	RETAINING RING 5	1				
113		JM23100116	LOCK SCREW M6X12	2				
114		JM23100117	DUST PORT	1				
115		JM23100118	HEX BOLT M6X25	1				
116		JM23100119	LIMITED KNOB	1				
117		JM23100120	H.S.SET BOLT M6X16	1			Y08325	
117-1		JM23100120	H.S.SET BOLT M6X16	1	O	Y08325		
118		JM23100360	UP BLADE GUARD COMPLETE	1			Y05758	
	C10	JM23180058	CAUTION LABEL	1			Y05758	
	D10		INC. 185				Y05758	
118-1		JM23100365	UP BLADE GUARD COMPLETE	1	O	Y05758		
	C10	JM23180058	CAUTION LABEL	1		Y05758	Y08347	
	C20	JM23100114	LINK PIN	1		Y06583	Y08325	
	C30	JM23100147	BUFFER	1		Y06583	Y08325	
	D10		INC. 185			Y05758	Y06583	
	D11		INC. 287,288			Y08325		
119		JM23100122	DUST GUIDE PLATE	1				
120		JM23100123	COPPER CONNECTION PLATE	1				
121		JM23100124	BLADE FLANGE	1				
123		JM23100125	BATTERY BOX	1				
124		JM23100126	LASER CORD TUBE	1				
125		JM23100127	LASER SWITCH COVER	1				
126		JM23100128	BATTERY BOX COVER	1				
127		JM23100129	LASER SWITCH	1				
128		JM23100130	SELF-TAPPING SCREW 2.9X12	2				
129		JM23100131	ANODE COPPER SHEET	1				
130		JM23100132	CATHODE COPPER SHEET	1				
131		JM23100133	BATTERY BOX SPRING	2				
132		JM23100134	LOCK PLATE	1				
133		JM23100135	LOCK SPRING	1				
134		JM23100136	LOCK COVER PLATE	1				
135		JM23100137	INSERT	1				
136		JM23100138	LOCK COVER	1				
143		JM23100155	OUTPUT SHAFT	1				
144		JM23100156	KEY 5X10	1				
145		JM23100157	BEARING 6304	1				
146		JM23100158	RETAINING RING 20	1				
147		JM23100159	GEAR	1				
148		JM23100160	RETAINING RING 16	1				
149		JM23100161	OUTPUT SHAFT SCREW M8X12	1				
150		JM23100162	BUSH	1			Y06583	
151		JM23100380	GEAR BOX COMPLETE	1				
	C10	JM23100162	BUSH	1		Y06583		
	D10		INC. 150				Y06583	
152		JM23100164	HANDLE LEFT SIDE	1				

A:

Interchange
O : Yes
X : No
< : the new part can be substituted for the current.
> : the current part can be substituted for the new.
S : Interchangeable as a set.

LS1017L / 260MM SLIDE COMPOUND MITER SAW

Item	Sub	Parts No.	Parts Description	Qty	I/C	E/C No.	Close No.	Remark
153		JM23100165	CORD GUARD S	1				
154		JM23000154	PW SUPPLY CORD H05VV-F 1-2 EU	1				
155		JM23100166	CORD CLAMP	1				
156		JM23100167	SELF TAPPING SCREW M4X16	2			Y08325	
156-1		JM23000106	SELF TAPING SCREWST4.2X12	2	X	Y08325		
157		JM23100168	BAFFLE RING	1				
158		JM23000100	ARMATURE ASS'Y (230V)	1				
	D10		INC. 284,285			Y08325		
159		JM23100169	CAPACITOR	1				
160		JM23100170	SELF-TAPPING SCREW M5X70	2				
161		JM23100171	TERMINAL BLOCK 2P	1				
162		JM23100001	STATOR ASSEMBLY	1				
163		JM23100172	ABSORBER RING	1				
164		JM23100173	SWITCH LOCK BRACKET	1				
165		JM23100174	SWITCH HANDLE	1				
166		JM23100175	SWITCH LOCK PLATE	1				
167		JM23100176	SWITCH HANDLE SPRING	1				
168		JM23100177	LOCK OFF BUTTON	1				
169		JM23100178	BRAKE SYSTEM SWITCH	1				
170		JM23100179	ELECTRIC SWITCH	1				
171		JM23100180	HANDLE RIGHT	1				
173		JM23100370	MOTOR HOUSE COMPLETE	1				
	C10	JM23180056	CAUTION LABEL	1			Y08347	
	C20	JM23180057	CAUTION LABEL	1			Y08347	
	C30	JM23180021	NAME PLATE	1			Y08347	
	C40	JM23100184	CARBON BRUSH HOUSE	2		Y06583		
	C50	JM23100185	H.S.SCREW M5X8	2		Y06583		
	D10		INC. 176,177				Y06583	
	D11		INC. 306,307,308			Y08347		
174		JM23100182	SCREW CAP	2				
175		JM23100183	CARBON BRUSH	2			Y05842	
175-1		JM23000123	CARBON BRUSH 2PCS/SET	2	O	Y05842	Y06169	
175-2		JM23000123	CARBON BRUSH 2PCS/SET	1	O	Y06169		
176		JM23100184	CARBON BRUSH HOUSE	2			Y06583	
177		JM23100185	H.S.SCREW M5X8	2			Y06583	
178		JM23100186	SOFT STARTER	1				
179		JM23100187	CROSS HEAD SCREW M5X35	3				
180		JM23100188	MOTOR REAR COVER	1				
181		JM23100189	CROSS HEAD SCREW M6X70	4				
182		JM23100191	RING 25.4	1				
183		JM23100145	ELASTIC PIN 5X30	2			Y06583	
184		JM23100146	H.S.BOLT M4X10	2				
185		JM23100147	BUFFER	1			Y06583	
186		JM23100148	H.S.BOLT M6X20 WITH GLUE	1				
187		JM23100149	SPRING WASHER 5	2				
188		JM23100150	SEALING RING	1				
189		JM23100151	SPRING WASHER 6	4				
190		JM23100152	WING KNOB,M6X10	1				
191		JM23100153	BLADE BOLT	1				
192		JM23100154	BIG FLAT WASHER 10	1				
193		JM23100190	SPECIAL WASHER 6	4				
194		JM23100016	FLAT WASHER 4	2				
195		JM23100016	FLAT WASHER 4	2				
196		JM23100016	FLAT WASHER 4	1				
197		JM23100016	FLAT WASHER 4	1		Y07576		
198		JM23100016	FLAT WASHER 4	1				
199		JM23100016	FLAT WASHER 4	2				
200		JM23100016	FLAT WASHER 4	2			Y08325	
200-1		JM23100016	FLAT WASHER 4	1	O	Y08325		
201		JM23100016	FLAT WASHER 4	1				
202		JM23100016	FLAT WASHER 4	2				
203		JM23100016	FLAT WASHER 4	1				
204		JM23100016	FLAT WASHER 4	1				
205		JM23100016	FLAT WASHER 4	2				
206		JM23100016	FLAT WASHER 4	2				

A:

Interchange
O : Yes
X : No
< : the new part can be substituted for the current.
> : the current part can be substituted for the new.
S : Interchangeable as a set.

TH	THAILAND
----	----------

LS1017L / 260MM SLIDE COMPOUND MITER SAW

Item	Sub	Parts No.	Parts Description	Qty	I/C	E/C No.	Close No.	Remark
207		JM23100033	PAN HEAD SCREW M4X12	2				
208		JM23100033	PAN HEAD SCREW M4X12	2				
209		JM23100033	PAN HEAD SCREW M4X12	1				
210		JM23100033	PAN HEAD SCREW M4X12	1				
211		JM23100033	PAN HEAD SCREW M4X12	1				
212		JM23100033	PAN HEAD SCREW M4X12	1				
213		JM23100033	PAN HEAD SCREW M4X12	1				
214		JM23100033	PAN HEAD SCREW M4X12	1				
215		JM23100033	PAN HEAD SCREW M4X12	1				
216		JM23100033	PAN HEAD SCREW M4X12	6				
217		JM23100033	PAN HEAD SCREW M4X12	2				
218		JM23100007	FLAT WASHER 5	2		Y07576		
219		JM23100007	FLAT WASHER 5	2				
220		JM23100007	FLAT WASHER 5	2				
221		JM23100007	FLAT WASHER 5	4				
222		JM23100007	FLAT WASHER 5	2				
223		JM23100041	FLAT WASHER 6	3				
224		JM23100041	FLAT WASHER 6	1				
225		JM23100089	CROSS HEAD SCREW M5X12	1				
226		JM23100089	CROSS HEAD SCREW M5X12	2				
227		JM23100089	CROSS HEAD SCREW M5X12	1				
228		JM23100089	CROSS HEAD SCREW M5X12	1				
229		JM23100015	SPRING WASHER 4	2				
230		JM23100015	SPRING WASHER 4	1				
231		JM23100015	SPRING WASHER 4	1				
232		JM23100015	SPRING WASHER 4	2				
233		JM23100015	SPRING WASHER 4	2				
234		JM23100151	SPRING WASHER 6	3				
235		JM23100167	SELF TAPPING SCREW M4X16	3				
236		JM23100167	SELF TAPPING SCREW M4X16	2			Y08325	
236-1		JM00000217	SELF TAPPING SCREW ST4.2X18	2	X	Y08325		
237		JM23100006	CROSS HEAD SCREW M5X20	4			Y08325	
237-1		JM23200029	CROSS HEAD SCREW M5X18	4	X	Y08325		
238		JM23100149	SPRING WASHER 5	2				
239		JM23100149	SPRING WASHER 5	2				
240		JM23100035	ANTI-LOOSEN RING	1				
241		JM23100035	ANTI-LOOSEN RING	2			Y08325	
241-1		JM23100035	ANTI-LOOSEN RING	1	O	Y08325		
242		JM23100019	CROSS HEAD SCREW M4X18	2			Y08325	
242-1		JM23100019	CROSS HEAD SCREW M4X18	1	O	Y08325		
243		JM23100083	LIMITED BRACKET	1				
244		JM23100083	LIMITED BRACKET	1				
245		JM23100084	DUSTPROOF RING	2				
246		JM23100084	DUSTPROOF RING	1				
247		JM23100104	FLAT WASHER 5	3			Y06583	
248		JM23100009	HEX LOCK NUT M10	1			Y06583	
249		JM23100009	HEX LOCK NUT M10	1				
250		JM23100034	HEX BOLT M6X28	2			Y08325	
250-1		JM23100034	HEX BOLT M6X28	1	O	Y08325		
251		JM23100069	LASER CORD CLAMP	1				
252		JM23100069	LASER CORD CLAMP	1				
253		JM23100071	THIN FLAT WASHER 6	1				
254		JM23100072	CORD CLAMP	1				
255		JM23100073	CORD WRAP BRACKET	1				
256		JM23100081	BUFFER A	1			Y06583	
257		JM23100082	BEARING BAFFLE	1				
258		JM23100098	LINK SLEEVE	1				
259		JM23100124	BLADE FLANGE	1				
260		JM23100390	LASER ASSEMBLY	1				
	D10		INC. 64,66,71,72,120,123-131,					
	D20		INC. 184,194,199,207					
261		JM23100016	FLAT WASHER 4	1		Y08325		
262		JM23100019	CROSS HEAD SCREW M4X18	1		Y08325		
263		JM23100016	FLAT WASHER 4	1		Y08325		
264		JM23100016	FLAT WASHER 4	1		Y08325		

A:

Interchange
 O : Yes
 X : No
 < : the new part can be substituted for the current.
 > : the current part can be substituted for the new.
 S : Interchangeable as a set.

LS1017L / 260MM SLIDE COMPOUND MITER SAW

Item	Sub	Parts No.	Parts Description	Qty	I/C	E/C No.	Close No.	Remark
265		JM23100019	CROSS HEAD SCREW M4X18	1		Y08325		
266		JM23100007	FLAT WASHER 5	1		Y08325		
267		JM23100007	FLAT WASHER 5	1		Y08325		
268		JM23100055	BIG FLAT WASHER 10X26X2.5	1		Y08325		
269		JM23100010	FLAT WASHER 10	1		Y08325	Y08347	
270		JM23500053	EXTERNAL TOOTHED LOCK WASHER	1		Y08325		
271		JM23100034	HEX BOLT M6X28	1		Y08325		
272		JM23100035	ANTI-LOOSEN RING	1		Y08325		
273		JM23100007	FLAT WASHER 5	1		Y08325		
274		JM00000216	EXTERNAL TOOTHED LOCK WASHER	1		Y08325		
276		JM23100500	HOLDER	2		Y08325		
280		JM23100028	WORKING TABLE	1		Y08325		
281		JM23100038	ELASTIC PIN 4X20	1		Y08325		
282		JM23100039	LOCKING ROD	1		Y08325		
283		JM23100009	HEX LOCK NUT M10	1		Y08325		
284		JM23500137	BALL BEARING 6201	1		Y08325		
285		JM23200032	BEARING 6001	1		Y08325		
286		JM23100035	ANTI-LOOSEN RING	1		Y08325		
287		JM23100114	LINK PIN	1		Y08325		
288		JM23100147	BUFFER	1		Y08325		
289		JM23100041	FLAT WASHER 6	1		Y08325		
290		JM23100081	BUFFER A	1		Y08325		
291		JM23100085	LINEAR BEARING	1		Y08325		
292		JM23100085	LINEAR BEARING	2		Y08325		
293		JM23100087	HEX SOCKET SET SCREW M6X8	2		Y08325		
294		JM23100081	BUFFER A	1		Y08325		
295		JM2708B060	CAUTION LABEL	2		Y08325		
296		JM23100016	FLAT WASHER 4	1		Y08347		
297		JM23100066	WING KNOB M6X20	1		Y08347		
300		JM23100036	BEVEL SCALE	1		Y08347		
301		JM23100012	MITER SCALE LABEL	1		Y08347		
302		JM23180060	CAUTION LABEL	1		Y08347		
303		JM23100064	SUB FENCE	1		Y08347		
305		JM00000061	CAUTION LABEL	1		Y08347		
306		JM23180020	NAMEPLATE	1		Y08347		
307		JM23180056	CAUTION LABEL	1		Y08347		
308		JM23180057	CAUTION LABEL	1		Y08347		
A01		JM23100500	HOLDER	2			Y08325	
A02		782230-2	BOX WRENCH 13-3	1			Y06108	
A02-1		JM23100197	BOX WRENCH 13-3	1	O	Y06108		
A03		JM23100004	SAW BLADE	1				
A04		JM27000328	TRIANGLE PLATE	1				
A05		JM23100501	DUST BAG ASSEMBLY	1				
A06		JM23100502	WISE ASSEMBLY	1				

A: Interchange
O : Yes
X : No
< : the new part can be substituted for the current.
> : the current part can be substituted for the new.
S : interchangeable as a set.