



|    |          |
|----|----------|
| TH | THAILAND |
|----|----------|

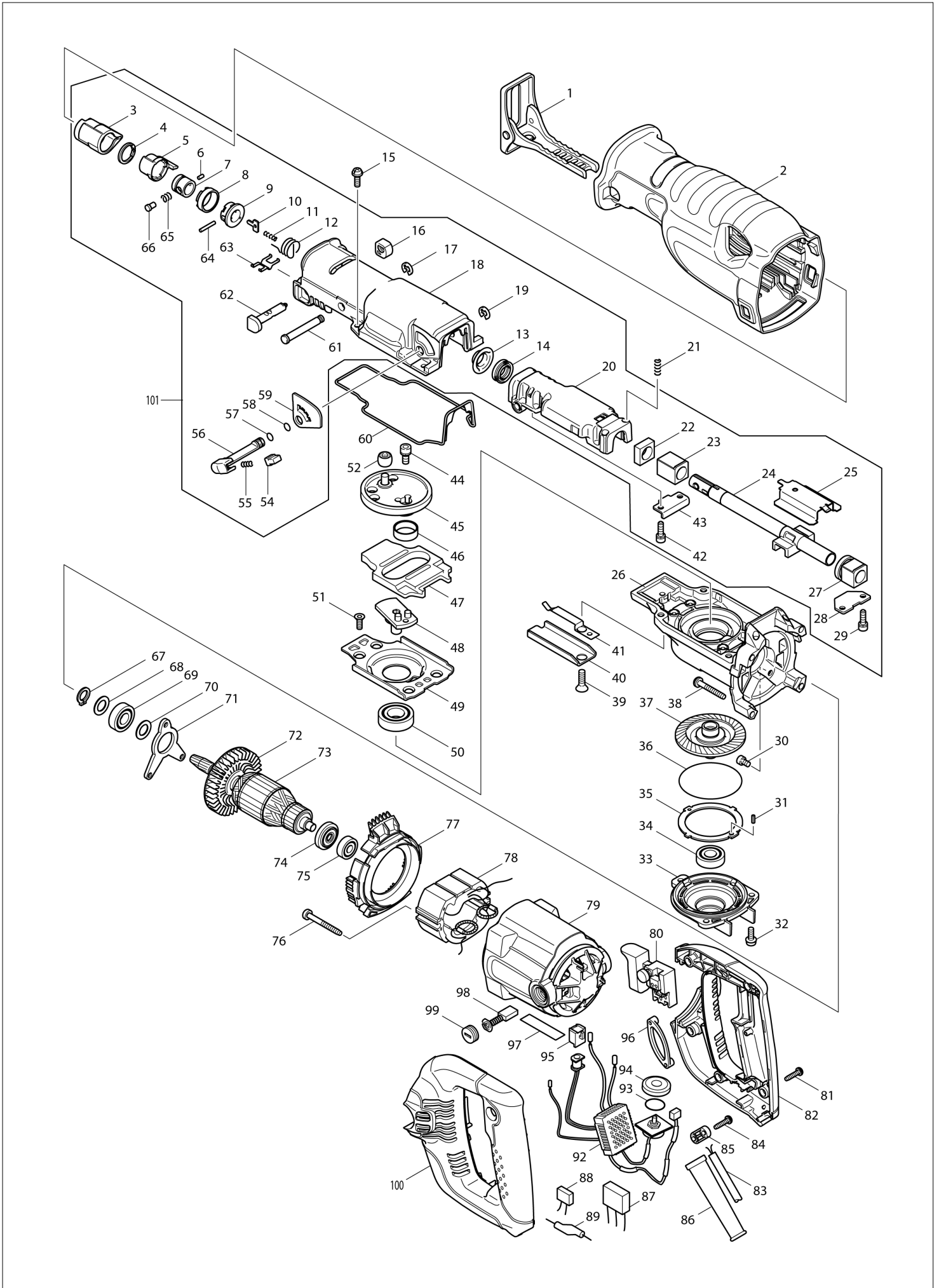
# Diagram / Parts List

JR3070CT

RECIPRO SAW



(TH) JR3070CT / RECIPRO SAW



|    |          |
|----|----------|
| TH | THAILAND |
|----|----------|

### JR3070CT / RECIPRO SAW

| Item  | Sub | Parts No. | Parts Description             | Qty | I/C | E/C No. | Close No. | Remark |
|-------|-----|-----------|-------------------------------|-----|-----|---------|-----------|--------|
| 001   |     | 163453-5  | SHOE                          | 1   |     |         |           |        |
| 002   |     | 421904-7  | INSULATION COVER              | 1   |     |         |           |        |
| 003   |     | 421894-4  | PROTECTOR                     | 1   |     |         | 81159     |        |
| 003-1 |     | 424147-0  | PROTECTOR                     | 1   | S   | 81159   |           |        |
| 004   |     | 961078-7  | RETAINING RING (EXT) S-18     | 1   |     |         | 75599     |        |
| 004-1 |     | 257952-8  | RETAINING RING (EXT) 18       | 1   | S   | 75599   | C8033     |        |
| 004-2 |     | 257430-8  | RETAINING RING(EXT)18         | 1   | S   | C8033   |           |        |
| 005   |     | 310160-3  | DRIVING SLEEVE                | 1   |     |         | 76797     |        |
| 005-1 |     | 310160-3  | DRIVING SLEEVE                | 1   | O   | 76797   | 81159     |        |
| 005-2 |     | 310285-3  | DRIVING SLEEVE                | 1   | S   | 81159   | C1245     |        |
| 005-3 |     | 310658-0  | DRIVING SLEEVE                | 1   | S   | C1245   |           |        |
| 006   |     | 268094-3  | PIN 3                         | 1   |     |         |           |        |
| 007   |     | 331639-1  | GUIDE SLEEVE                  | 1   |     |         | 75599     |        |
| 007-1 |     | 331720-8  | GUIDE SLEEVE                  | 1   | S   | 75599   | C8033     |        |
| 007-2 |     | 327043-0  | GUIDE SLEEVE                  | 1   | S   | C8033   |           |        |
| 008   |     | 417791-0  | DRIVING SLEEVE GUIDE          | 1   |     |         |           |        |
| 009   |     | 418311-3  | SLEEVE                        | 1   |     |         |           |        |
| 010   |     | 345214-7  | PUSH PLATE                    | 1   |     |         |           |        |
| 011   |     | 233025-1  | COMPRESSION SPRING 2          | 1   |     |         |           |        |
| 012   |     | 231687-9  | TORSION SPRING 17             | 1   |     |         |           |        |
| 013   |     | 257742-9  | SHOULDER SLEEVE 14            | 1   |     |         |           |        |
| 014   |     | 213174-0  | X RING 14                     | 1   |     |         |           |        |
| 015   |     | 911225-0  | PAN HEAD SCREW M5X16          | 4   |     |         |           |        |
| 016   |     | 418806-6  | CAP                           | 1   |     |         |           |        |
| 017   |     | 961012-7  | STOP RING E-6                 | 1   |     |         |           |        |
| 018   |     | 154551-6  | GEAR HOUSING COVER COMPLETE   | 1   |     |         |           |        |
| 019   |     | 961012-7  | STOP RING E-6                 | 1   |     |         |           |        |
| 020   |     | 154502-9  | SLIDER SUPPORT COMPLETE       | 1   |     |         |           |        |
| 021   |     | 233038-2  | COMPRESSION SPRING 5          | 2   |     |         |           |        |
| 022   |     | 423343-7  | SEAL PLATE 14                 | 1   |     |         |           |        |
| 023   |     | 214170-1  | PLANE BEARING 14A             | 1   |     |         |           |        |
| 024-1 |     | 154804-3  | SLIDER COMPLETE               | 1   |     |         | 95391     |        |
| 024-2 |     | 168410-8  | SLIDER                        | 1   | O   | 95391   | B5146     |        |
| 024-3 |     | 168410-8  | SLIDER                        | 1   | O   | B5146   | C1245     |        |
| 024-4 |     | 161437-7  | SLIDER                        | 1   | S   | C1245   |           |        |
| 025   |     | 345487-2  | SLIDE PLATE                   | 1   |     |         |           |        |
| 026   |     | 317842-8  | GEAR HOUSING                  | 1   |     |         |           |        |
| 027   |     | 154547-7  | BEARING COMPLETE              | 1   |     |         | 83098     |        |
| 027-1 |     | 154547-7  | BEARING COMPLETE              | 1   | O   | 83098   |           |        |
| 028   |     | 345486-4  | PLATE B                       | 1   |     |         |           |        |
| 029-1 |     | 911225-0  | PAN HEAD SCREW M5X16          | 2   |     |         |           |        |
| 030   |     | 265530-0  | HEX.SOCKET HEAD BOLT M5X8     | 3   |     |         |           |        |
| 032   |     | 911225-0  | PAN HEAD SCREW M5X16          | 3   |     |         |           |        |
| 033   |     | 317844-4  | BEARING BOX                   | 1   |     |         |           |        |
| 034   |     | 211101-1  | BALL BEARING 6001LLB          | 1   |     |         |           |        |
| 036   |     | 213726-7  | O RING 62                     | 1   |     |         |           |        |
| 037   |     | 154549-3  | TORQUE LIMITER COMPLETE       | 1   |     |         |           |        |
| 038   |     | 266012-5  | TAPPING SCREW 5X35            | 4   |     |         | 86680     |        |
| 038-1 |     | 266373-3  | TAPPING SCREW 5X35            | 4   | O   | 86680   |           |        |
| 039-1 |     | 265165-7  | TORXSOCKET C.S.HEADSCREW M6X1 | 1   |     |         |           |        |
| 040   |     | 345479-1  | SHOE GUIDE                    | 1   |     |         |           |        |
| 041   |     | 232222-6  | LEAF SPRING B                 | 1   |     |         |           |        |
| 042-1 |     | 911225-0  | PAN HEAD SCREW M5X16          | 2   |     |         |           |        |
| 043   |     | 345485-6  | PLATE A                       | 1   |     |         |           |        |
| 044   |     | 265531-8  | HEX.SOCKET HEAD BOLT M6X14    | 1   |     |         |           |        |
| 045   |     | 154545-1  | CRANK CAM COMPLETE            | 1   |     |         | 86913     |        |
| 045-1 |     | 154545-1  | CRANK CAM COMPLETE            | 1   | O   | 86913   |           |        |
| 046   |     | 257265-7  | RING 21                       | 1   |     |         |           |        |
| 047   |     | 313121-2  | COUNTER WEIGHT                | 1   |     |         |           |        |
| 048   |     | 154546-9  | CRANK BASE COMPLETE           | 1   |     |         |           |        |
| 049   |     | 345489-8  | GUIDE PLATE                   | 1   |     |         |           |        |
| 050   |     | 211251-2  | BALL BEARING 6003LLB          | 1   |     |         |           |        |
| 051   |     | 265148-7  | TORX SOCKET HEAD SCREW M5X14  | 4   |     |         |           |        |
| 052   |     | 212957-5  | NEEDLE BEARING 710            | 1   |     |         |           |        |
| 054   |     | 418991-5  | STOPPER                       | 1   |     |         |           |        |

A:JR3070CT(H)

Interchange  
O : Yes  
X : No  
< : the new part can be substituted for the current.  
> : the current part can be substituted for the new.  
S : Interchangeable as a set.

|           |                 |
|-----------|-----------------|
| <b>TH</b> | <b>THAILAND</b> |
|-----------|-----------------|

### JR3070CT / RECIPRO SAW

| Item  | Sub | Parts No. | Parts Description            | Qty | I/C | E/C No. | Close No. | Remark |
|-------|-----|-----------|------------------------------|-----|-----|---------|-----------|--------|
| 055   |     | 231309-1  | COMPRESSION SPRING 5         | 1   |     |         |           |        |
| 056   |     | 272247-8  | LEVER 20                     | 1   |     |         |           |        |
| 057   |     | 213021-5  | O RING 5                     | 1   |     |         |           |        |
| 058   |     | 213021-5  | O RING 5                     | 1   |     |         |           |        |
| 059   |     | 413095-8  | PLATE C                      | 1   |     |         |           |        |
| 060   |     | 421899-4  | SEAL RING                    | 1   |     |         |           |        |
| 061   |     | 268012-1  | PIN 7                        | 1   |     |         |           |        |
| 062   |     | 162236-0  | SHIFT BUTTON                 | 1   |     |         |           |        |
| 063   |     | 232221-8  | LEAF SPRING A                | 1   |     |         |           |        |
| 064   |     | 256158-5  | PIN 3                        | 1   |     |         |           |        |
| 065   |     | 233345-3  | COMPRESSION SPRING 6         | 1   |     |         | C1245     |        |
| 065-1 |     | 234381-2  | COMPRESSION SPRING 6         | 1   | S   | C1245   |           |        |
| 066   |     | 256492-3  | SHOULDER PIN 5               | 1   |     |         | C1245     |        |
| 066-1 |     | 256569-4  | SHOULDER PIN 5               | 1   | S   | C1245   |           |        |
| 067   |     | 961052-5  | RETAINING RING (EXT) S-12    | 1   |     |         |           |        |
| 068   |     | 253744-3  | FLAT WASHER 12               | 1   |     |         |           |        |
| 069   |     | 211131-2  | BALL BEARING 6001DDW         | 1   |     |         |           |        |
| 070   |     | 253744-3  | FLAT WASHER 12               | 1   |     |         |           |        |
| 071   |     | 285719-4  | BEARING RETAINER A           | 1   |     |         |           |        |
| 072   |     | 241863-7  | FAN 70                       | 1   |     |         |           |        |
| 073   |     | 513603-6  | ARMATURE ASS'Y 220-240V      | 1   |     |         |           |        |
|       | D10 |           | INC. 72,74,75                |     |     |         |           |        |
| 074   |     | 681650-6  | INSULATION WASHER            | 1   |     |         |           |        |
| 075   |     | 210029-0  | BALL BEARING 608ZZ           | 1   |     |         |           |        |
| 076   |     | 266056-5  | TAPPING SCREW 5X45           | 2   |     |         | 86680     |        |
| 076-1 |     | 266466-6  | TAPPING SCREW 5X45           | 2   | O   | 86680   | 91941     |        |
| 076-2 |     | 266056-5  | TAPPING SCREW 5X45           | 2   | O   | 91941   |           |        |
| 077   |     | 418817-1  | BAFFLE PLATE                 | 1   |     |         |           |        |
| 078   |     | 528803-5  | FIELD ASS'Y 220-240V         | 1   |     |         |           |        |
|       | C10 | 654020-2  | RING TERMINAL                | 2   |     |         |           |        |
|       | C20 | 654501-6  | CONNECTOR P-1.25             | 2   |     |         | DE676     |        |
|       | C21 | 654485-8  | PARALLEL SPLICE              | 2   | O   | DE676   |           |        |
| 079   |     | 154498-4  | MOTOR HOUSING COMPLETE       | 1   |     |         |           |        |
|       | C10 | 643708-9  | BRUSH HOLDER 5-11            | 2   |     |         |           |        |
| 080-1 |     | 650222-8  | SWITCH TG71ARS-1             | 1   |     |         |           |        |
| 081   |     | 265995-6  | TAPPING SCREW 4X18           | 5   |     |         |           |        |
| 082   |     | 183933-5  | HANDLE SET                   | 1   |     |         |           |        |
|       | D10 |           | INC. 100                     |     |     |         |           |        |
| 083   |     | 691015-4  | POWER SUPPLY CORD 0.75-2-2.5 | 1   |     |         |           |        |
| 084   |     | 265995-6  | TAPPING SCREW 4X18           | 2   |     |         |           |        |
| 085   |     | 687053-2  | STRAIN RELIEF                | 1   |     |         | A7453     |        |
| 085-1 |     | 687140-7  | STRAIN RELIEF                | 1   | O   | A7453   |           |        |
| 086   |     | 682573-1  | CORD GUARD 10                | 1   |     |         |           |        |
| 092   |     | 631651-4  | CONTROLLER                   | 1   |     |         |           |        |
| 093   |     | 213261-5  | O RING 17                    | 1   |     |         |           |        |
| 094   |     | 418905-4  | DIAL                         | 1   |     |         |           |        |
| 095   |     | 418518-1  | SLEEVE                       | 1   |     |         |           |        |
| 097   |     | 861231-4  | JR3070CT NAME PLATE          | 1   |     |         |           |        |
| 098   |     | A-81664   | CARBON BRUSH CB-303A         | 1   |     |         | 83185     |        |
| 098-1 |     | B-80151   | CARBON BRUSH SET CB-303A     | 1   | O   | 83185   | 85070     |        |
| 098-2 |     | B-80379   | CARBON BRUSH SET CB-303A     | 1   | <   | 85070   |           |        |
| 099   |     | 643750-0  | BRUSH HOLDER CAP 7-11        | 2   |     |         |           |        |
| 100   |     | 183933-5  | HANDLE SET                   | 1   |     |         |           |        |
|       | D10 |           | INC. 82                      |     |     |         |           |        |
| 101   |     | 125524-6  | GEAR HOUSING COVER ASSEMBLY  | 1   |     | Y06107  | C1245     |        |
|       | D10 |           | INC. 3-14,16-20,22-25,27-29, |     |     | Y06107  | C1245     |        |
|       | D20 |           | INC. 42,43,54-59,61-66       |     |     | Y06107  | C1245     |        |
| 101-1 |     | 126912-0  | GEAR HOUSING COVER ASSEMBLY  | 1   | <   | C1245   | C8033     |        |
|       | D10 |           | INC. 3-14,16-20,22-25,27-29, |     |     | C1245   | C8033     |        |
|       | D20 |           | INC. 42,43,54-59,61-66       |     |     | C1245   | C8033     |        |
| 101-2 |     | 127403-4  | GEAR HOUSING COVER ASSEMBLY  | 1   | <   | C8033   |           |        |
|       | D10 |           | INC. 3-14,16-20,22-25,27-29, |     |     | C8033   |           |        |
|       | D20 |           | INC. 42,43,54-59,61-66       |     |     | C8033   |           |        |
| A01-1 |     | 824734-9  | PLASTIC CARRYING CASE        | 1   |     |         | A4241     |        |
|       | C10 | 417724-5  | LATCH                        | 2   |     |         | A4241     |        |

A:JR3070CT(H)

Interchange  
O : Yes  
X : No  
< : the new part can be substituted for the current.  
> : the current part can be substituted for the new.  
S : Interchangeable as a set.

