



TH	THAILAND
----	----------

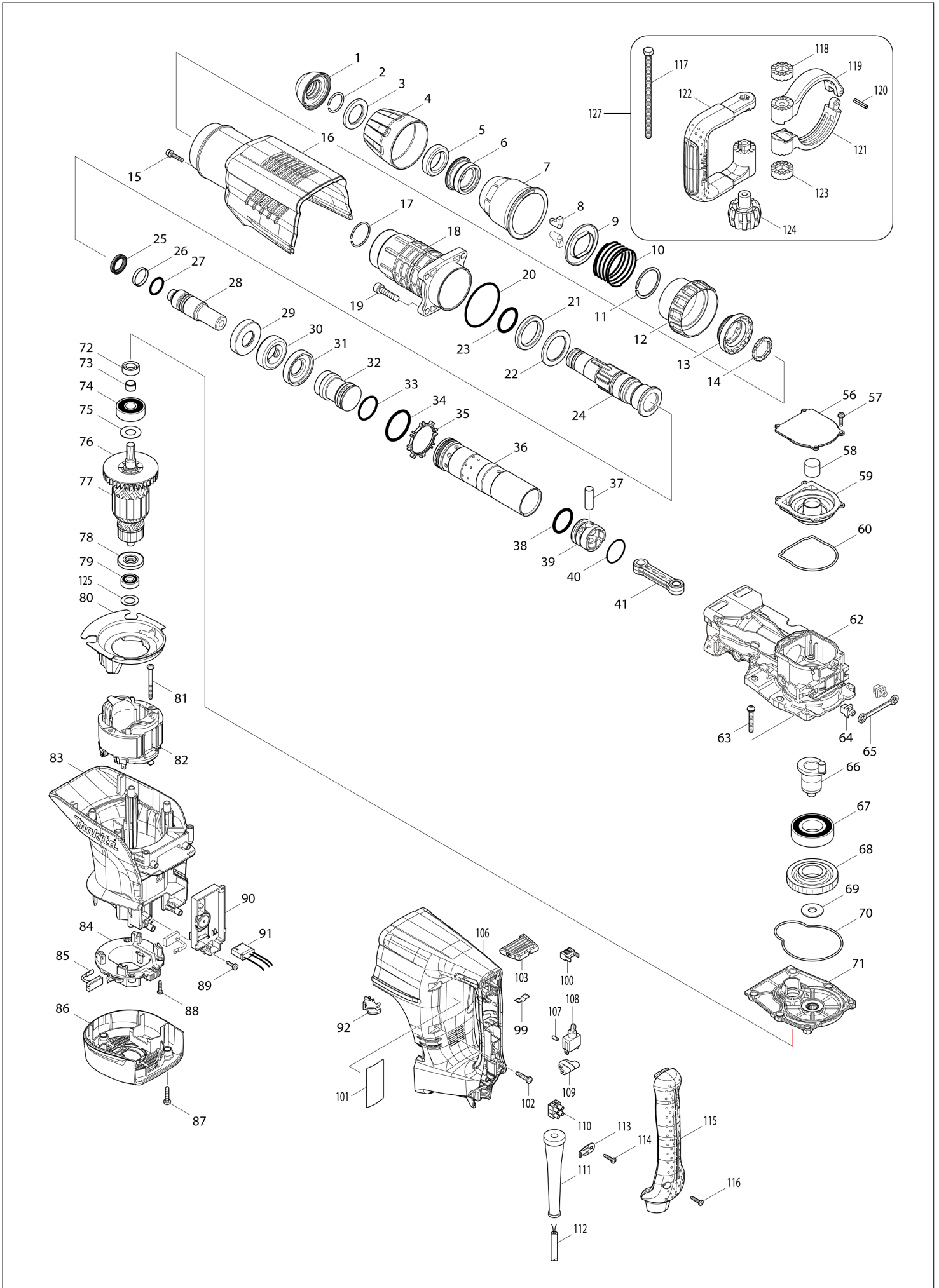
# Diagram / Parts List

**HM1203C**

**DEMOLITION HAMMER**



# (TH) HM1203C / DEMOLITION HAMMER



TH	THAILAND
----	----------

### HM1203C / DEMOLITION HAMMER

Item	Sub	Parts No.	Parts Description	Qty	I/C	E/C No.	Close No.	Remark	
001		424165-8	TOOL HOLDER CAP	1					
002		233973-4	RING SPRING 26	1					
003		267386-7	FLAT WASHER 30	1					
004		450894-7	CHUCK COVER	1					
005		262147-0	RUBBER RING 30	1					
006		324987-5	CHUCK RING	1					
007		450895-5	RELEASE COVER	1					
008		310279-8	TOOL RETAINER	2					
009		346015-6	SPRING GUIDE	1					
010		234086-4	COMPRESSION SPRING 56	1					
011		961232-3	RETAINING RING WR-45	1					
012		450893-9	CHANGE RING COVER	1					
013		324969-7	CHANGE RING	1					
014		324988-3	LOCK RING	1					
015		922243-3	HEX. SOCKET HEAD BOLT M5X25	1					
016		450903-2	HOUSING COVER	1					
017		233970-0	RING SPRING 35	1					
018		158858-2	BARREL COMPLETE	1					
019		922456-6	HEX. SOCKET HEAD BOLT M8X35	4					
020		213720-9	O RING 67	1					
021		262148-8	RUBBER RING 39	1					
022		267387-5	FLAT WASHER 39	1					
023		213079-4	O-RING 35.5	1					
024		324985-9	TOOL HOLDER	1					
025		213980-3	X-RING 21	1					
026		213431-6	FLUORIDE RING 28	1					
027		213394-6	O RING 23	1					
028		324990-6	IMPACT BOLT	1					
029		324993-0	SHOULDER SLEEVE	1					
030		262149-6	RUBBER RING 24	1					
031		324993-0	SHOULDER SLEEVE	1					
032		324991-4	STRIKER	1			87961		
032-1		326002-1	STRIKER	1	O	87961			
033		213499-2	O-RING 31.5	1					
034		213581-7	O-RING 44	1					
035		450889-0	ONE WAY VALVE GUIDE	1					
036		331848-2	CYLINDER 40	1			87961		
036-1		331925-0	CYLINDER 40	1	O	87961			
037		268121-6	PIN 12	1					
038		213499-2	O-RING 31.5	1					
039		450961-8	PISTON	1					
040		213149-9	O RING 35	1					
041		450890-5	CONNECTING ROD	1					
056		450899-7	CRANK CAP COVER	1					
057		911133-5	PAN HEAD SCREW M4X18	4					
058		443127-7	FILTER	1					
059		450898-9	CRANK CAP	1					
060		424166-6	SEAL RING	1					
062		318364-1	CRANK HOUSING	1					
063		266482-8	H.S.BUTTON HEAD SCREW M6X40	6					
064		419008-7	FIX GUIDE	2					
065		423366-5	CUSHION PLATE	1					
066		324994-8	CRANK SHAFT	1					
067		211424-7	BALL BEARING 6206LLU	1					
068		226691-1	HELICAL GEAR 57	1					
069		267398-0	FLAT WASHER 12	1					
070		424167-4	SEAL RING	1					
071		158859-0	GEAR HOUSING COMPLETE	1					
072		213231-4	OIL SEAL 15	1					
073		331596-3	SLEEVE 12	1					
074		211249-9	BALL BEARING 6302LLU	1					
075		267397-2	FLAT WASHER 15	1					
076		240003-4	FAN 80	1					
077		517818-7	ARMATURE ASS'Y 220-240V	1					
	D10		INC. 73-76,78,79						
A:HM1203C(H)							Interchange O : Yes X : No < : the new part can be substituted for the current. > : the current part can be substituted for the new. S : Interchangeable as a set.		

TH	THAILAND
----	----------

### HM1203C / DEMOLITION HAMMER

Item	Sub	Parts No.	Parts Description	Qty	I/C	E/C No.	Close No.	Remark
078		681642-5	INSULATION WASHER	1				
079		210059-1	BALL BEARING 6000DDW	1			85956	
079-1		211289-7	BALL BEARING 6000DDW	1	O	85956		
080		450900-8	BAFFLE PLATE	1				
081		266095-5	TAPPING SCREW 5X55	2				
082		636303-2	FIELD 220-240V	1				
083		450904-0	MOTOR HOUSING	1				
084		638447-4	BRUSH HOLDER UNIT	1			A4072	
084-1		632D00-2	BRUSH HOLDER UNIT	1	<	A4072		
085		194412-8	CARBON BRUSH CB-171	1			85070	
085-1		194990-8	CARBON BRUSH CB-171	1	<	85070	92823	
085-2		195845-0	CARBON BRUSH CB-175	1	<	92823		
086		450901-6	REAR COVER	1				
087		266041-8	TAPPING SCREW 5X25	3				
088		265995-6	TAPPING SCREW 4X18	4				
089		266192-7	TAPPING SCREW 4X14	2			A2782	
089-1		266300-0	TAPPING SCREW 4X18	2	<	A2782	C5745	
089-2		265678-8	TAPPING SCREW 4X18	2	O	C5745		
090		631869-7	CONTROLLER	1				
091		638650-7	LEAD UNIT	1				
092		419010-0	LENS	1				
099		232209-8	LEAF SPRING	1				
100		450891-3	LEVER STOPPER	1				
101		866622-4	HM1203C NAME PLATE	1			Z21272	
101-1		814S44-6	HM1203C NAME PLATE	1	<	Z21272		
102		266041-8	TAPPING SCREW 5X25	6				
103		450897-1	SLIDE LEVER	1				
106		450907-4	HANDLE	1				
107		263027-3	RUBBER PIN 4	1				
108		651423-1	SWITCH	1			DB412	
108-1		651423-1	SWITCH	1	O	DB412		
109		423379-6	SPONGE SHEET	1				
110		654531-7	TERMINAL BLOCK 2P	1				
111		682560-0	CORD GUARD 10	1				
112		691025-1	POWER SUPPLY CORD 0.75-2-5.0	1				
113		687169-3	STRAIN RELIEF	1				
114		265995-6	TAPPING SCREW 4X18	1				
115		450908-2	HANDLE COVER	1				
116		265995-6	TAPPING SCREW 4X18	2				
117		265439-6	HEX. BOLT M8X150	1				
118		417002-3	SIDE HANDLE CAM	1				
119		318505-9	SIDE HANDLE BASE 82A	1				
120		951166-8	SPRING PIN 5-24	1				
121		318506-7	SIDE HANDLE BASE 82B	1				
122		417003-1	SIDE HANDLE	1				
123		417002-3	SIDE HANDLE CAM	1				
124		252640-2	WING NUT M8	1				
125		267164-5	FLAT WASHER 15	1				
127		135269-8	SIDE HANDLE 82 ASS'Y	1				
	D10		INC. 117-124					
128		801Y75-0	CLEAR LABEL	1		Z21272		
A01		A-80787	BULL POINT 280 SDS-MAX	1			DG655	
A01-1		D-34176	BULL POINT FOR SDS-MAX 300	1	O	DG655		
A02		194659-4	GREASE VESSEL SET	1			82042	
A02-1		194683-7	GREASE VESSEL SET	1	O	82042		
A03		443122-7	CLOTH	1				
A04		824876-9	PLASTIC CARRYING CASE	1			A9011	
	C10	162271-8	LATCH	2			A9011	
	C20	325637-5	SHAFT	1			A9011	
	C30	450990-1	HANDLE	1			A9011	
A04-1		143519-7	PLASTIC CASE COMPLETE	1	<	A9011		
	C10	162271-8	LATCH	2		A9011		
	C20	325637-5	SHAFT	1		A9011		
	C30	450990-1	HANDLE	1		A9011		
	C40	835200-1	SPONGE 40-40	3		A9011		

A:HM1203C(H)

Interchange  
O : Yes  
X : No  
< : the new part can be substituted for the current.  
> : the current part can be substituted for the new.  
S : Interchangeable as a set.

