



TH	THAILAND
----	----------

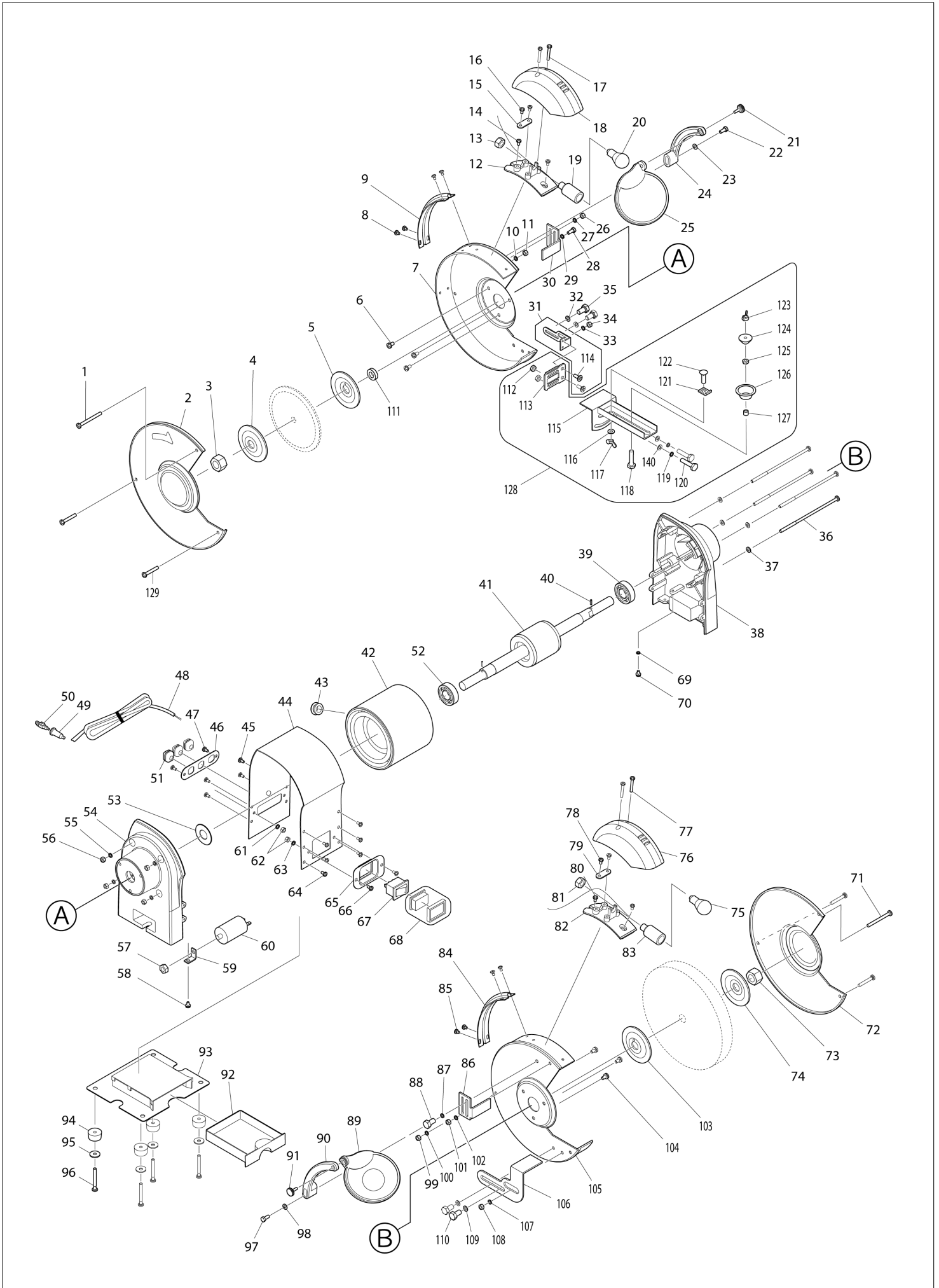
Diagram / Parts List

GB602W

BENCH GRINDER 150MM



(TH) GB602W / BENCH GRINDER 150MM



TH	THAILAND
----	----------

GB602W / BENCH GRINDER 150MM

Item	Sub	Parts No.	Parts Description	Qty	I/C	E/C No.	Close No.	Remark
001		911274-7	PAN HEAD SCREW M5X50	2			Y08828	
001-1		AL00000106	PAN HEAD SCREW M5X50	1	O	Y08828		
002		AL00000002	LEFT WHEEL COVER	1			Y08794	
002-1		AL00000002	LEFT WHEEL COVER	1	O	Y08794		
003		AL00000003	HEX NUT M12 LH	1			Y08794	
003-1		AL00000003	HEX NUT M12 LH	1	O	Y08794		
004		AL00000004	OUTER FLANGE 60	1			Y08794	
004-1		AL00000004	OUTER FLANGE 60	1	O	Y08794		
005		AL00000005	INNER FLANGE 60	1			Y08794	
005-1		AL00000005	INNER FLANGE 60	1	O	Y08794		
006		911206-4	PAN HEAD SCREW M5X10	3			Y08828	
006-1		AL00000304	PAN HEAD SCREW M5X10 WITH W	3	X	Y08828		
007		AL00000006	LEFT WHEEL GUARD (INNER)	1			Y08794	
007-1		AL00000006	LEFT WHEEL GUARD (INNER)	1	O	Y08794		
008		911107-6	PAN HEAD SCREW M4X8	4			Y08828	
008-1		AL00000114	PAN HEAD SCREW M4X6	4	X	Y08828		
009		AL00000007	CORD CLAMP	1				
010		942101-7	SPRING WASHER 5	1			Y08828	
010-1		AL00000132	SPRING WASHER 5	1	O	Y08828		
011		931201-8	HEX. NUT M5	1			Y08828	
011-1		AL00000121	HEX NUT M5	1	O	Y08828		
012		AL00000008	LAMP COVER BASE	1				
013		AL00000009	PLASTIC HEX NUT M10	1			Y08774	
013-1		AL00000009	PLASTIC HEX NUT M10	1	O	Y08774		
014		911107-6	PAN HEAD SCREW M4X8	2			Y08828	
014-1		AL00000102	BIND HEAD SCREW M4X6	2	X	Y08828		
015		AL00000010	CORD CLAMP BASE	1			Y08774	
015-1		AL00000010	CORD CLAMP BASE	1	O	Y08774		
016		911118-1	PAN HEAD SCREW M4X12	2			Y08828	
016-1		AL00000104	PAN HEAD SCREW M4X10	2	X	Y08828		
017		911156-3	PAN HEAD SCREW M4X30	2			Y08828	
017-1		AL00000105	PAN HEAD SCREW M4X30	2	X	Y08828		
018		AL00000011	LAMP COVER ASSY	1			Y08774	
018-1		AL00000011	LAMP COVER ASSY	1	O	Y08774		
019		AL00000012	LAMP SOCKET S-25	1			Y08794	
019-1		AL00000012	LAMP SOCKET S-25	1	O	Y08794		
020		AL00000013	BULB S-25 12V 10W	1			Y08774	
020-1		AL00000013	BULB S-25 12V 10W	1	O	Y08774		
021		AL00000014	KNOB BOLT M4X12	1			Y08774	
021-1		AL00000014	KNOB BOLT M4X12	1	O	Y08774		
022		921351-7	HEX. BOLT M6X30	1			Y08828	
022-1		AL00000119	HEX BOLT M6X30	1	O	Y08828		
023		941151-9	FLAT WASHER 6	1			Y08828	
023-1		AL00000127	FLAT WASHER 6	1	O	Y08828		
024		AL00000015	EYE SHIELD MOUNTING ARM L	1			Y08774	
024-1		AL00000015	EYE SHIELD MOUNTING ARM L	1	O	Y08774		
025		AL00000016	EYE SHIELD L ASSY	1			Y08774	
025-1		AL00000016	EYE SHIELD L ASSY	1	O	Y08774		
026		931201-8	HEX. NUT M5	1			Y08828	
026-1		AL00000121	HEX NUT M5	1	O	Y08828		
027		942101-7	SPRING WASHER 5	1			Y08828	
027-1		AL00000132	SPRING WASHER 5	1	O	Y08828		
028		921212-1	HEX. BOLT M5X12	1			Y08828	
028-1		AL00000252	HEX BOLT M5X10 WITH WR	1	X	Y08828		
029		942101-7	SPRING WASHER 5	1			Y08828	
030		AL00000017	LEFT SPARK SHIELD	1			Y08794	
030-1		AL00000017	LEFT SPARK SHIELD	1	O	Y08794		
031		AL00000082	WORK REST FOR SHARPENING KIT A	1			Y08828	
031-1		AL00000082	WORK REST FOR SHARPENING KIT A	1	O	Y08828		
	D10		INC. 114				Y08828	
032		941202-8	FLAT WASHER 8	2			Y08828	
032-1		AL00000128	FLAT WASHER 8	2	O	Y08828		
033		942101-7	SPRING WASHER 5	1			Y08828	
033-1		AL00000132	SPRING WASHER 5	1	O	Y08828		
034		931201-8	HEX. NUT M5	1			Y08828	

A:

Interchange
 O : Yes
 X : No
 < : the new part can be substituted for the current.
 > : the current part can be substituted for the new.
 S : Interchangeable as a set.

TH	THAILAND
----	----------

GB602W / BENCH GRINDER 150MM

Item	Sub	Parts No.	Parts Description	Qty	I/C	E/C No.	Close No.	Remark
034-1		AL00000121	HEX NUT M5	1	O	Y08828		
035		921411-5	HEX. BOLT M8X12	2			Y08828	
035-1		AL00000118	HEX BOLT M8X10	2	O	Y08828		
036		265004-1	PAN HEAD SCREW M5X135	4			Y07317	
036-1		AL00000113	PAN HEAD SCREW M5X135	4	O	Y07317	Y08794	
036-2		AL00000113	PAN HEAD SCREW M5X135	4	O	Y08794		
037		941101-4	FLAT WASHER 5	4			Y08828	
037-1		AL00000126	FLAT WASHER 5	4	O	Y08828		
038		AL00000019	HOUSING R	1			Y08794	
038-1		AL00000019	HOUSING R	1	O	Y08794		
039		211206-7	BALL BEARING 6202LLB	1			Y08828	
039-1		AL00000100	BALL BEARING 6202	1	O	Y08828		
040		951051-5	SPRING PIN 3-8	2			Y08828	
040-1		AL00000135	SPRING PIN 3X8	2	O	Y08828		
041		AL00000215	ROTOR	1			Y07349	
041-1		AL00000229	ROTOR	1	S	Y07349		
042		AL00000185	STATOR 220V 50HZ	1			Y07349	
042-1		AL00000228	STATOR 220-240V 50HZ	1	S	Y07349	Y08794	
042-2		AL00000228	STATOR 220-240V 50HZ	1	O	Y08794	Y08900	
042-3		AL00000261	STATOR 220-240V 50-60HZ	1	<	Y08900		
043		AL00000022	GROMMET	1			Y08774	
043-1		AL00000022	GROMMET	1	O	Y08774		
044		AL00000023	HOUSING CENTER	1			Y08794	
044-1		AL00000023	HOUSING CENTER	1	O	Y08794		
045		911113-1	PAN HEAD SCREW M4X10 WITH WR	4			Y08828	
045-1		AL00000108	PAN HEAD SCREW M4X8	4	X	Y08828		
046		AL00000024	CORD CLIP PLATE (3 HOLES)	1			Y08794	
046-1		AL00000024	CORD CLIP PLATE (3 HOLES)	1	O	Y08794		
047		911113-1	PAN HEAD SCREW M4X10 WITH WR	2			Y08828	
047-1		AL00000103	PAN HEAD SCREW M4X8	2	X	Y08828		
048		AL00000174	POWER SUPPLY CORD PH 3P	1			Y08774	
048-1		AL00000174	POWER SUPPLY CORD PH 3P	1	O	Y08774		
051		AL00000026	GROMMET WITH STRAIN RELIEF	3			Y08774	
051-1		AL00000026	GROMMET WITH STRAIN RELIEF	3	O	Y08774		
052		211206-7	BALL BEARING 6202LLB	1			Y08828	
052-1		AL00000100	BALL BEARING 6202	1	O	Y08828		
053		AL00000027	WAVE SPRING WASHER 27.5	1			Y08794	
053-1		AL00000027	WAVE SPRING WASHER 27.5	1	O	Y08794		
054		AL00000028	HOUSING L	1			Y08794	
054-1		AL00000028	HOUSING L	1	O	Y08794		
055		942101-7	SPRING WASHER 5	4			Y08828	
055-1		AL00000132	SPRING WASHER 5	4	O	Y08828		
056		931201-8	HEX. NUT M5	4			Y08828	
056-1		AL00000121	HEX NUT M5	4	O	Y08828		
057		931402-8	HEX. NUT M8	1			Y08828	
057-1		AL00000122	HEX NUT M8	1	O	Y08828		
058		911113-1	PAN HEAD SCREW M4X10 WITH WR	1			Y08828	
058-1		AL00000295	PAN HEAD SCREW M4X7 WITH WG	1	O	Y08828		
059		AL00000029	CAPACITOR SUPPORT	1			Y08774	
059-1		AL00000029	CAPACITOR SUPPORT	1	O	Y08774		
060		AL00000095	CAPACITOR 4 MICRO F/450V	1			Y08794	
060-1		AL00000095	CAPACITOR 4 MICRO F/450V	1	O	Y08794		
061		942051-6	SPRING WASHER 4	2			Y08828	
061-1		AL00000131	SPRING WASHER 4	2	O	Y08828		
062		931102-0	HEX. NUT M4	4			Y08828	
062-1		AL00000120	HEX NUT M4	4	O	Y08828		
063		942051-6	SPRING WASHER 4	2			Y08828	
063-1		AL00000131	SPRING WASHER 4	2	O	Y08828		
064		911113-1	PAN HEAD SCREW M4X10 WITH WR	6			Y08828	
064-1		AL00000108	PAN HEAD SCREW M4X8	6	X	Y08828		
065		AL00000031	SWITCH BOARD	1				
066		911113-1	PAN HEAD SCREW M4X10 WITH WR	2			Y08828	
066-1		AL00000103	PAN HEAD SCREW M4X8	2	X	Y08828		
067		AL00000032	SWITCH ASSY COVER	1			Y07269	
067-1		AL00000168	SWITCH WITH COVER	1	<	Y07269		

A:

Interchange
O : Yes
X : No
< : the new part can be substituted for the current.
> : the current part can be substituted for the new.
S : Interchangeable as a set.

TH	THAILAND
----	----------

GB602W / BENCH GRINDER 150MM

Item	Sub	Parts No.	Parts Description	Qty	I/C	E/C No.	Close No.	Remark
068		AL00000033	SWITCH COVER ASSY	1			Y07269	
069		AL00000134	TOOTHED LOCK WASHER 4	1				
070		911113-1	PAN HEAD SCREW M4X10 WITH WR	1			Y08828	
070-1		AL00000295	PAN HEAD SCREW M4X7 WITH WG	1	O	Y08828		
071		AL00000106	PAN HEAD SCREW M5X50	1		Y08828		
072		AL00000034	RIGHT WHEEL COVER	1			Y08794	
072-1		AL00000034	RIGHT WHEEL COVER	1	O	Y08794		
073		AL00000035	HEX NUT M12	1				
074		AL00000004	OUTER FLANGE 60	1			Y08794	
074-1		AL00000004	OUTER FLANGE 60	1	O	Y08794		
075		AL00000013	BULB S-25 12V 10W	1			Y08774	
075-1		AL00000013	BULB S-25 12V 10W	1	O	Y08774		
076		AL00000011	LAMP COVER ASSY	1			Y08774	
076-1		AL00000011	LAMP COVER ASSY	1	O	Y08774		
077		911156-3	PAN HEAD SCREW M4X30	2			Y08828	
077-1		AL00000105	PAN HEAD SCREW M4X30	2	X	Y08828		
078		911118-1	PAN HEAD SCREW M4X12	2			Y08828	
078-1		AL00000104	PAN HEAD SCREW M4X10	2	X	Y08828		
079		AL00000010	CORD CLAMP BASE	1			Y08774	
079-1		AL00000010	CORD CLAMP BASE	1	O	Y08774		
080		911107-6	PAN HEAD SCREW M4X8	2			Y08828	
080-1		AL00000102	BIND HEAD SCREW M4X6	2	X	Y08828		
081		AL00000009	PLASTIC HEX NUT M10	1			Y08774	
081-1		AL00000009	PLASTIC HEX NUT M10	1	O	Y08774		
082		AL00000008	LAMP COVER BASE	1				
083		AL00000012	LAMP SOCKET S-25	1			Y08794	
083-1		AL00000012	LAMP SOCKET S-25	1	O	Y08794		
084		AL00000007	CORD CLAMP	1				
085		911107-6	PAN HEAD SCREW M4X8	4			Y08828	
085-1		AL00000114	PAN HEAD SCREW M4X6	4	X	Y08828		
086		AL00000036	RIGHT SPARK SHIELD	1			Y08794	
086-1		AL00000036	RIGHT SPARK SHIELD	1	O	Y08794		
087		942101-7	SPRING WASHER 5	1			Y08828	
088		921212-1	HEX. BOLT M5X12	1			Y08828	
088-1		AL00000252	HEX BOLT M5X10 WITH WR	1	X	Y08828		
089		AL00000037	EYE SHIELD WITH MAGNIFYER	1			Y08774	
089-1		AL00000037	EYE SHIELD WITH MAGNIFYER	1	O	Y08774		
090		AL00000038	EYE SHIELD MOUNTING ARM R	1			Y08774	
090-1		AL00000038	EYE SHIELD MOUNTING ARM R	1	O	Y08774		
091		AL00000014	KNOB BOLT M4X12	1			Y08774	
091-1		AL00000014	KNOB BOLT M4X12	1	O	Y08774		
092		AL00000039	COOLANT TRAY	1				
093		AL00000040	UNDER COVER	1			Y08794	
093-1		AL00000040	UNDER COVER	1	O	Y08794		
094		AL00000041	PUBBER FOOT	4			Y08794	
094-1		AL00000041	PUBBER FOOT	4	O	Y08794		
095		941051-3	FLAT WASHER 4	4			Y08828	
095-1		AL00000129	FLAT WASHER 4 (L)	4	X	Y08828	Y08828	
096		911121-2	PAN HEAD SCREW M4X14	4			Y08828	
096-1		AL00000109	PAN HEAD SCREW M4X16 WITH R	4	X	Y08828	Y08828	
096-2		AL00000305	PAN HEAD SCREW M4X16 WITH R	4	X	Y08828		
097		921351-7	HEX. BOLT M6X30	1			Y08828	
097-1		AL00000119	HEX BOLT M6X30	1	O	Y08828		
098		941151-9	FLAT WASHER 6	1			Y08828	
098-1		AL00000127	FLAT WASHER 6	1	O	Y08828		
099		931201-8	HEX. NUT M5	1			Y08828	
099-1		AL00000121	HEX NUT M5	1	O	Y08828		
100		942101-7	SPRING WASHER 5	1			Y08828	
100-1		AL00000132	SPRING WASHER 5	1	O	Y08828		
101		931201-8	HEX. NUT M5	1			Y08828	
101-1		AL00000121	HEX NUT M5	1	O	Y08828		
102		942101-7	SPRING WASHER 5	1			Y08828	
102-1		AL00000132	SPRING WASHER 5	1	O	Y08828		
103		AL00000005	INNER FLANGE 60	1			Y08794	
103-1		AL00000005	INNER FLANGE 60	1	O	Y08794		

A:

Interchange
O : Yes
X : No
< : the new part can be substituted for the current.
> : the current part can be substituted for the new.
S : Interchangeable as a set.

TH	THAILAND
-----------	-----------------

GB602W / BENCH GRINDER 150MM

Item	Sub	Parts No.	Parts Description	Qty	I/C	E/C No.	Close No.	Remark
104		911206-4	PAN HEAD SCREW M5X10	3			Y08828	
104-1		AL00000304	PAN HEAD SCREW M5X10 WITH W	3	X	Y08828		
105		AL00000042	RIGHT WHEEL GUARD (INNER)	1			Y08794	
105-1		AL00000042	RIGHT WHEEL GUARD (INNER)	1	O	Y08794		
106		AL00000043	RIGHT WORK REST	1			Y08794	
106-1		AL00000043	RIGHT WORK REST	1	O	Y08794		
107		942101-7	SPRING WASHER 5	1			Y08828	
107-1		AL00000132	SPRING WASHER 5	1	O	Y08828		
108		931201-8	HEX. NUT M5	1			Y08828	
108-1		AL00000121	HEX NUT M5	1	O	Y08828		
109		941202-8	FLAT WASHER 8	2			Y08828	
109-1		AL00000128	FLAT WASHER 8	2	O	Y08828		
110		921411-5	HEX. BOLT M8X12	2			Y08828	
110-1		AL00000118	HEX BOLT M8X10	2	O	Y08828		
111		AL00000001	SPACER RING 12.7X27X6.7	1			Y08828	
111-1		AL00000001	SPACER RING 12.7X27X6.7	1	O	Y08828		
112		931301-4	HEX. NUT M6	2			Y08828	
112-1		AL00000123	HEX NUT M6	2	O	Y08828		
113		AL00000047	WORK REST FOR SHARPENING KIT B	1			Y08828	
113-1		AL00000047	WORK REST FOR SHARPENING KIT B	1	O	Y08828		
114		AL00000048	FLAT HEAD SCREW M6X10	2			Y08828	
114-1		AL00000048	FLAT HEAD SCREW M6X10	2	O	Y08828		
115		AL00000049	SAW BLADE SHARPENER STAND	1			Y08828	
115-1		AL00000049	SAW BLADE SHARPENER STAND	1	O	Y08828		
116		AL00000050	THICK FLAT WASHER 10	1			Y08828	
116-1		AL00000050	THICK FLAT WASHER 10	1	O	Y08828		
117		934401-9	WING NUT M8	1			Y08828	
117-1		AL00000124	WING NUT M8	1	O	Y08828		
118		921362-2	HEX. BOLT M6X40	1			Y08828	
118-1		AL00000117	HEX BOLT M6X40	1	O	Y08828		
119		942151-2	SPRING WASHER 6	2			Y08828	
119-1		AL00000133	SPRING WASHER 6	2	O	Y08828		
120		921362-2	HEX. BOLT M6X40	2			Y08828	
120-1		AL00000145	HEX BOLT M6X16	2	X	Y08828		
121		AL00000051	STOPPER PLATE	1			Y08828	
121-1		AL00000051	STOPPER PLATE	1	O	Y08828		
122		AL00000052	SQUARE NECK BOLT M8X20	1			Y08828	
122-1		AL00000052	SQUARE NECK BOLT M8X20	1	O	Y08828		
123		934301-3	WING NUT M6	1			Y08828	
123-1		AL00000125	WING NUT M6	1	X	Y08828		
124		AL00000053	SAW BLADE CLAMP CONE	1			Y08828	
124-1		AL00000053	SAW BLADE CLAMP CONE	1	O	Y08828		
125		931301-4	HEX. NUT M6	1			Y08828	
125-1		AL00000123	HEX NUT M6	1	O	Y08828		
126		AL00000054	SAW BLADE CLAMP CUP	1			Y08828	
126-1		AL00000054	SAW BLADE CLAMP CUP	1	O	Y08828		
127		AL00000055	SPACER SLEEVE 6X8X6	1			Y08828	
127-1		AL00000055	SPACER SLEEVE 6X8X6	1	O	Y08828		
128		A-47531	SAW BLADE SHARPENING KIT	1				
	D10		INC. 31,112-127				Y08828	
	D11		INC. 112,113,115-127,140			Y08828		
129		911267-4	PAN HEAD SCREW M5X45	4			Y08828	
129-1		AL00000143	PAN HEAD SCREW M5X46	2	X	Y08828		
137		AL00000133	SPRING WASHER 6	1		Y08828		
138		AL00000018	LEFT WORK REST	1		Y08828		
140		AL00000127	FLAT WASHER 6	2		Y08828		
148		AL00000133	SPRING WASHER 6	1		Y08828		
151		AL00000143	PAN HEAD SCREW M5X46	2		Y08828		
A01		AL00000044	WRENCH 8-19	1			Y08794	
A01-1		AL00000044	WRENCH 8-19	1	O	Y08794		
A02		AL00000045	WRENCH 10-13	1			Y08794	
A02-1		AL00000045	WRENCH 10-13	1	O	Y08794		
A03		A-47195	GRINDING WHEEL (BENCH,150)	1			Y08828	
A03-1		B-51895	GRINDING WHEEL (BENCH,150)	1	O	Y08828		
A04		A-47210	GRINDING WHEEL (BENCH,150)	1			03 107	

A:

Interchange
O : Yes
X : No
< : the new part can be substituted for the current.
> : the current part can be substituted for the new.
S : Interchangeable as a set.

