



TH	THAILAND
----	----------

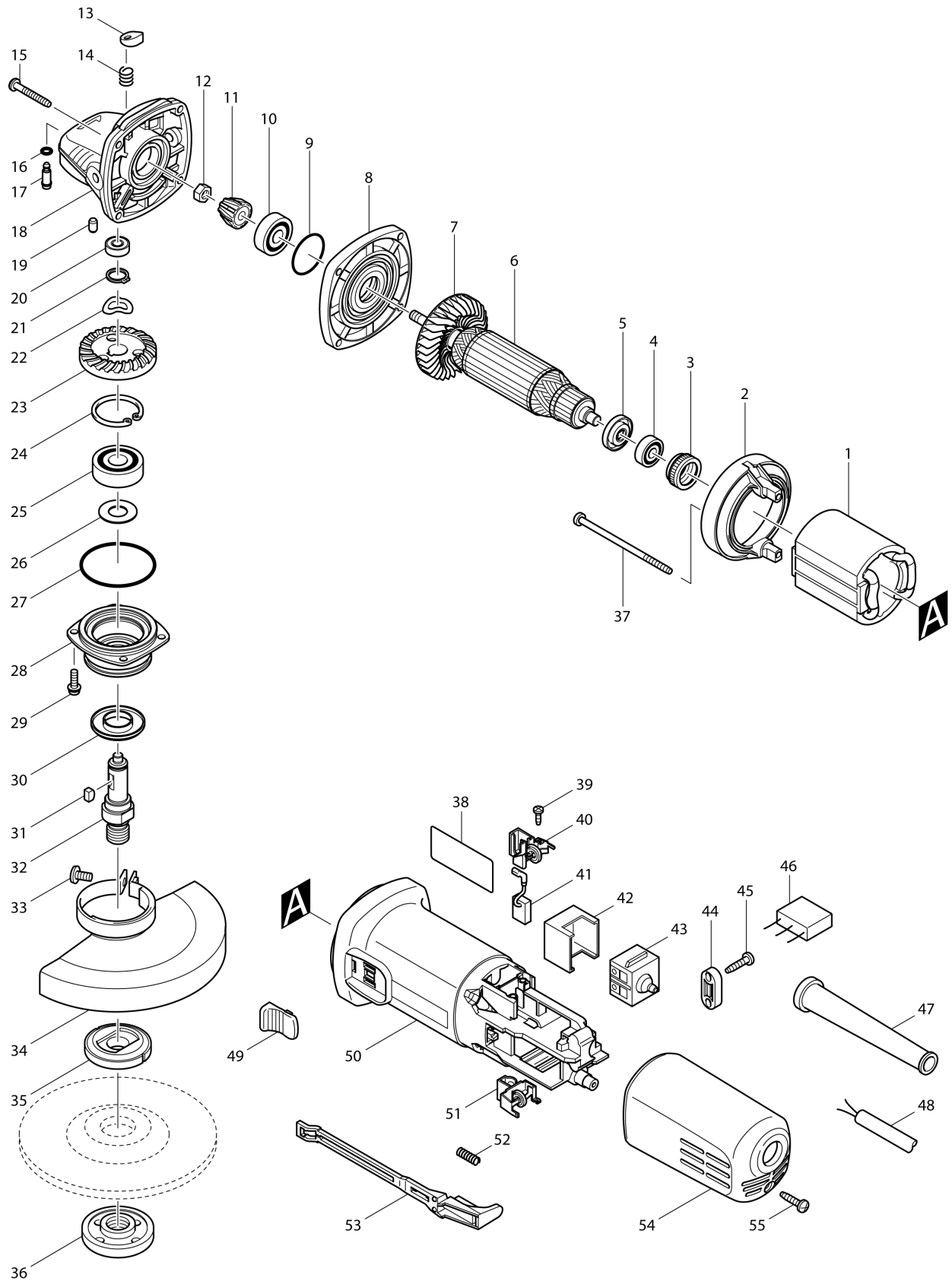
Diagram / Parts List

9558HN

125MM ANGLE GRINDER



(TH) 9558HN / 125MM ANGLE GRINDER



TH	THAILAND
-----------	-----------------

9558HN / 125MM ANGLE GRINDER

Item	Sub	Parts No.	Parts Description	Qty	I/C	E/C No.	Close No.	Remark
001		621708-9	FIELD 220-240V	1				
002		418770-1	BAFFLE PLATE	1			B9212	
002-1		457791-8	BAFFLE PLATE	1	<	B9212		
003		421868-5	LABYRINTH RUBBER RING 19	1			DD769	
003-1		422768-2	LABYRINTH RUBBER RING19	1	<	DD769		
004		210034-7	BALL BEARING 607LLB	1			88792	
004-1		211021-9	BALL BEARING 607LLB	1	O	88792		
005		681636-0	INSULATION WASHER	1				
006		515613-9	ARMATURE ASS'Y 220-240V	1			88792	
	D10		INC. 4,5,7				88792	
006-1		510084-5	ARMATURE ASS'Y 220-240V	1	O	88792		
	D10		INC. 4,5,7			88792		
007		240076-7	FAN 56	1				
008		317821-6	GEAR HOUSING COVER	1				
009		213445-5	O-RING 26	1				
010		210042-8	BALL BEARING 629LLB	1				
011		227541-3	SPIRAL BEVEL GEAR 10	1				
012		252186-8	HEX. NUT M6	1				
013		417771-6	PIN CAP	1				
014		233376-2	COMPRESSION SPRING 8	1				
015		266361-0	TAPPING SCREW 4X30	4			C0991	
015-1		265654-2	TAPPING SCREW 4X30	4	O	C0991		
016		213960-9	O RING 5	1				
017		256486-8	SHOULDER PIN 4	1				
018		317814-3	GEAR HOUSING	1			C7917	
018-1		318051-2	GEAR HOUSING	1	O	C7917		
019		263002-9	RUBBER PIN 4	1				
020		210033-9	BALL BEARING 696ZZ	1			88792	
020-1		210006-2	BALL BEARING 696ZZ	1	O	88792		
021		961052-5	RETAINING RING (EXT) S-12	1				
022		267794-2	WAVE WASHER 12	1				
023		227542-1	SPIRAL BEVEL GEAR 37	1				
024		962151-6	RETAINING RING R-32	1				
025		211129-9	BALL BEARING 6201DDW	1				
026		267238-2	FLAT WASHER 12	1				
027		213622-9	O RING 45	1				
028		317819-3	BEARING BOX	1				
029		265099-4	PAN HEAD SCREW M4X14	4				
030		345464-4	LABYRINTH RING	1				
031		254011-9	WOODRUFF KEY 4	1				
032		324489-1	SPINDLE	1				
033		265103-9	PAN HEAD SCREW M5X14	1				
034		125268-8	WHEEL COVER ASS'Y	1				
	D10		INC. 33					
035		224415-9	INNER FLANGE 42	1				
036		224554-5	LOCK NUT 14-45	1				
037		266345-8	TAPPING SCREW 4X80	2			C8288	
037-1		265A28-3	TAPPING SCREW 4X80	2	O	C8288		
038		865808-7	9558HN NAME PLATE	1				
039		266007-8	TAPPING SCREW BIND PT 3X10	4				
040		643760-7	BRUSH HOLDER	1				
041		194486-9	CARBON BRUSH CB-325/CB-329	1			85070	
041-1		195002-0	CARBON BRUSH SET CB-325/329	1	<	85070		
042		418729-8	SPACER	1				
043		650560-8	SWITCH DPX-2110-R	1			93182	
043-1		651947-7	SWITCH 1247.0302	1	O	93182	Z36828	
043-2		650621-4	SWITCH PS10	1	O	Z36828		
044		687053-2	STRAIN RELIEF	1			A7453	
044-1		687140-7	STRAIN RELIEF	1	O	A7453	DE694	
044-2		687124-5	STRAIN RELIEF	1	S	DE694		
045		266326-2	TAPPING SCREW 4X18	2			C0991	
045-1		265652-6	TAPPING SCREW 4X18	2	O	C0991		
047		682566-8	CORD GUARD 10	1			DE694	
047-1		682559-5	CORD GUARD 8	1	S	DE694		
048		691015-4	POWER SUPPLY CORD 0.75-2-2.5	1			DE694	

A:9558HN(H)

Interchange
O : Yes
X : No
< : the new part can be substituted for the current.
> : the current part can be substituted for the new.
S : Interchangeable as a set.

