



TH	THAILAND
----	----------

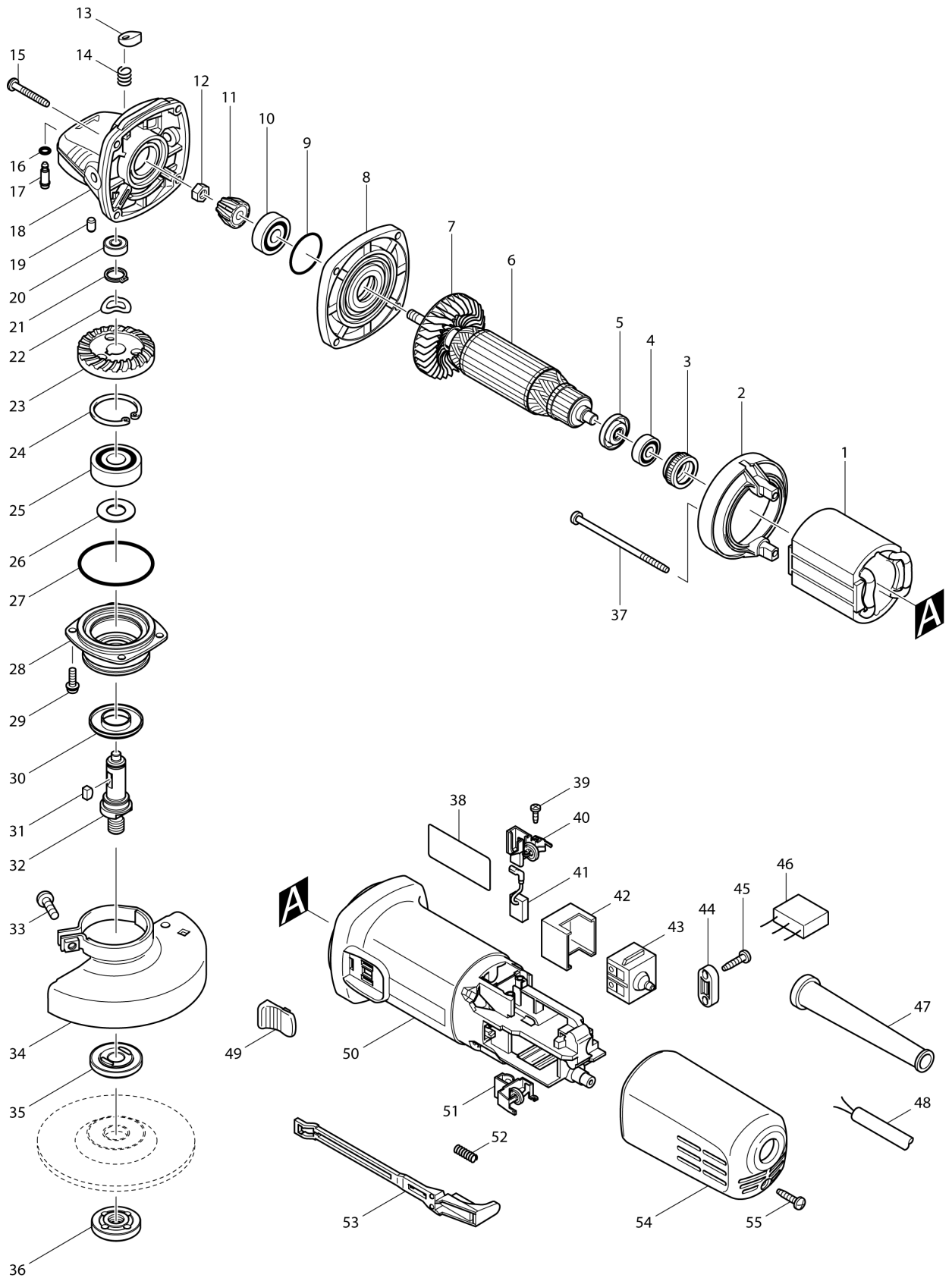
Diagram / Parts List

9556HN

100MM ANGLE GRINDER



(TH) 9556HN / 100MM ANGLE GRINDER



TH	THAILAND
-----------	-----------------

9556HN / 100MM ANGLE GRINDER

Item	Sub	Parts No.	Parts Description	Qty	I/C	E/C No.	Close No.	Remark
001		621708-9	FIELD 220-240V	1				
002A		418770-1	BAFFLE PLATE	1			B9212	
002B		418770-1	BAFFLE PLATE	1			B9212	
002-1A		457791-8	BAFFLE PLATE	1	<	B9212		
002-1B		457791-8	BAFFLE PLATE	1	<	B9212		
002-1D		457791-8	BAFFLE PLATE	1				
003		421868-5	LABYRINTH RUBBER RING 19	1			DD769	
003-1		422768-2	LABYRINTH RUBBER RING19	1	<	DD769		
004A		210034-7	BALL BEARING 607LLB	1			88786	
004-1A		211021-9	BALL BEARING 607LLB	1	O	88786		
004-1B		211021-9	BALL BEARING 607LLB	1				
004-1D		211021-9	BALL BEARING 607LLB	1				
005		681636-0	INSULATION WASHER	1				
006A		515613-9	ARMATURE ASS'Y 220-240V	1			88786	
	D10		INC. 4,5,7				88786	
006-1A		510084-5	ARMATURE ASS'Y 220-240V	1	O	88786		
	D10		INC. 4,5,7			88786		
006-1B		510084-5	ARMATURE ASS'Y 220-240V	1				
	D10		INC. 4,5,7					
006-1D		510084-5	ARMATURE ASS'Y 220-240V	1				
	D10		INC. 4,5,7					
007		240076-7	FAN 56	1				
008		317821-6	GEAR HOUSING COVER	1				
009		213445-5	O-RING 26	1				
010		210042-8	BALL BEARING 629LLB	1				
011		227541-3	SPIRAL BEVEL GEAR 10	1				
012		252186-8	HEX. NUT M6	1				
013		417771-6	PIN CAP	1				
014		233376-2	COMPRESSION SPRING 8	1				
015A		266361-0	TAPPING SCREW 4X30	4			C0991	
015B		266361-0	TAPPING SCREW 4X30	4			C0991	
015D		265654-2	TAPPING SCREW 4X30	4				
015-1A		265654-2	TAPPING SCREW 4X30	4	O	C0991		
015-1B		265654-2	TAPPING SCREW 4X30	4	O	C0991		
016		213960-9	O RING 5	1				
017A		256486-8	SHOULDER PIN 4	1				
017B		256546-6	SHOULDER PIN 4	1				
017D		256546-6	SHOULDER PIN 4	1				
018A		317814-3	GEAR HOUSING	1			C7917	
018B		318941-9	GEAR HOUSING	1				
018D		318941-9	GEAR HOUSING	1				
018-1A		318051-2	GEAR HOUSING	1	O	C7917		
019		263002-9	RUBBER PIN 4	1				
020A		210033-9	BALL BEARING 696ZZ	1			88786	
020-1A		210006-2	BALL BEARING 696ZZ	1	O	88786		
020-1B		210006-2	BALL BEARING 696ZZ	1				
020-1D		210006-2	BALL BEARING 696ZZ	1				
021		961052-5	RETAINING RING (EXT) S-12	1				
022		267794-2	WAVE WASHER 12	1				
023		227542-1	SPIRAL BEVEL GEAR 37	1				
024		962151-6	RETAINING RING R-32	1				
025		211129-9	BALL BEARING 6201DDW	1				
026		267238-2	FLAT WASHER 12	1				
027		213622-9	O RING 45	1				
028		317819-3	BEARING BOX	1				
029		265099-4	PAN HEAD SCREW M4X14	4				
030		345464-4	LABYRINTH RING	1				
031		254011-9	WOODRUFF KEY 4	1				
032		324488-3	SPINDLE	1				
033		265103-9	PAN HEAD SCREW M5X14	1				
034		125266-2	WHEEL COVER 100 ASSEMBLY	1			B6931	
	D10		INC. 33				B6931	
034-1		125266-2	WHEEL COVER 100 ASSEMBLY	1	O	B6931		
	D10		INC. 33			B6931		
035		224314-5	INNER FLANGE 30	1				

A:9556HN(H)
 B:9556HNGD(H)
 D:9556HNG(H)

Interchange
 O : Yes
 X : No
 < : the new part can be substituted for the current.
 > : the current part can be substituted for the new.
 S : Interchangeable as a set.

TH	THAILAND
-----------	-----------------

9556HN / 100MM ANGLE GRINDER

Item	Sub	Parts No.	Parts Description	Qty	I/C	E/C No.	Close No.	Remark
036		224559-5	LOCK NUT 10-30	1				
037		266345-8	TAPPING SCREW 4X80	2			C8288	
037-1		265A28-3	TAPPING SCREW 4X80	2	O	C8288		
038		865806-1	9556HN NAME PLATE	1				
039		266007-8	TAPPING SCREW BIND PT 3X10	4				
040		643760-7	BRUSH HOLDER	1				
041A		194486-9	CARBON BRUSH CB-325/CB-329	1			85070	
041-1A		195002-0	CARBON BRUSH SET CB-325/329	1	<	85070		
041-1B		195002-0	CARBON BRUSH SET CB-325/329	1				
041-1D		195002-0	CARBON BRUSH SET CB-325/329	1				
042		418729-8	SPACER	1				
043A		650560-8	SWITCH DPX-2110-R	1			93182	
043-1A		651947-7	SWITCH 1247.0302	1	O	93182		
043-1B		651947-7	SWITCH 1247.0302	1			Z36828	
043-2B		650621-4	SWITCH PS10	1	O	Z36828		
043-2D		650621-4	SWITCH PS10	1				
044A		687053-2	STRAIN RELIEF	1			A7453	
044B		687053-2	STRAIN RELIEF	1			A7453	
044-1A		687140-7	STRAIN RELIEF	1	O	A7453		
044-1B		687140-7	STRAIN RELIEF	1	O	A7453	DE694	
044-1D		687140-7	STRAIN RELIEF	1			DE694	
044-2B		687124-5	STRAIN RELIEF	1	S	DE694		
044-2D		687124-5	STRAIN RELIEF	1	S	DE694		
045A		266326-2	TAPPING SCREW 4X18	2			C0991	
045B		266326-2	TAPPING SCREW 4X18	2			C0991	
045D		265652-6	TAPPING SCREW 4X18	2				
045-1A		265652-6	TAPPING SCREW 4X18	2	O	C0991		
045-1B		265652-6	TAPPING SCREW 4X18	2	O	C0991		
047A		682566-8	CORD GUARD 10	1				
047B		682566-8	CORD GUARD 10	1			DE694	
047D		682566-8	CORD GUARD 10	1			DE694	
047-1B		682559-5	CORD GUARD 8	1	S	DE694		
047-1D		682559-5	CORD GUARD 8	1	S	DE694		
048A		691015-4	POWER SUPPLY CORD 0.75-2-2.5	1				
048B		691015-4	POWER SUPPLY CORD 0.75-2-2.5	1			DE694	
048D		691015-4	POWER SUPPLY CORD 0.75-2-2.5	1			DE694	
048-1B		660503-2	POWER SUPPLY CORD 0.75-2-2.5	1	S	DE694		
048-1D		660503-2	POWER SUPPLY CORD 0.75-2-2.5	1	S	DE694		
049		419566-3	SWITCH KNOB	1				
050		418725-6	MOTOR HOUSING	1				
051		643760-7	BRUSH HOLDER	1				
052		233121-5	COMPRESSION SPRING 4	1				
053		418728-0	SWITCH LEVER B	1				
054A		418726-4	REAR COVER	1			DB072	
054B		418726-4	REAR COVER	1			DB072	
054D		418726-4	REAR COVER	1			DF694	
054-1A		413A32-8	REAR COVER	1	<	DB072		
054-1B		413A32-8	REAR COVER	1	<	DB072		
054-1D		413A32-8	REAR COVER	1	O	DF694		
055A		266326-2	TAPPING SCREW 4X18	1			C0991	
055B		266326-2	TAPPING SCREW 4X18	1			C0991	
055D		265652-6	TAPPING SCREW 4X18	1				
055-1A		265652-6	TAPPING SCREW 4X18	1	O	C0991		
055-1B		265652-6	TAPPING SCREW 4X18	1	O	C0991		
056A		819329-1	CLEAR LABEL	1		83870	88975	
056-1A		892295-7	CLEAR LABEL	1	<	88975		
056-1B		892295-7	CLEAR LABEL	1			Z36828	
056-2B		816X01-0	CLEAR LABEL	1	O	Z36828		
056-2D		816X01-0	CLEAR LABEL	1				
A01		153489-2	GRIP 36 COMPLETE	1				
A02		782420-7	LOCK NUT WRENCH 20	1				
A03A		D-05197	DIAMOND WHEEL 105MM(SEG,DRY)	1				
A03B		D-05197	DIAMOND WHEEL 105MM(SEG,DRY)	1				
A04A		A-80852	GRINDING WHEEL 100X6X16	1		83787		
A04B		A-80852	GRINDING WHEEL 100X6X16	1				

A:9556HN(H)
 B:9556HNGD(H)
 D:9556HNG(H)

Interchange
 O : Yes
 X : No
 < : the new part can be substituted for the current.
 > : the current part can be substituted for the new.
 S : Interchangeable as a set.

