



TH	THAILAND
----	----------

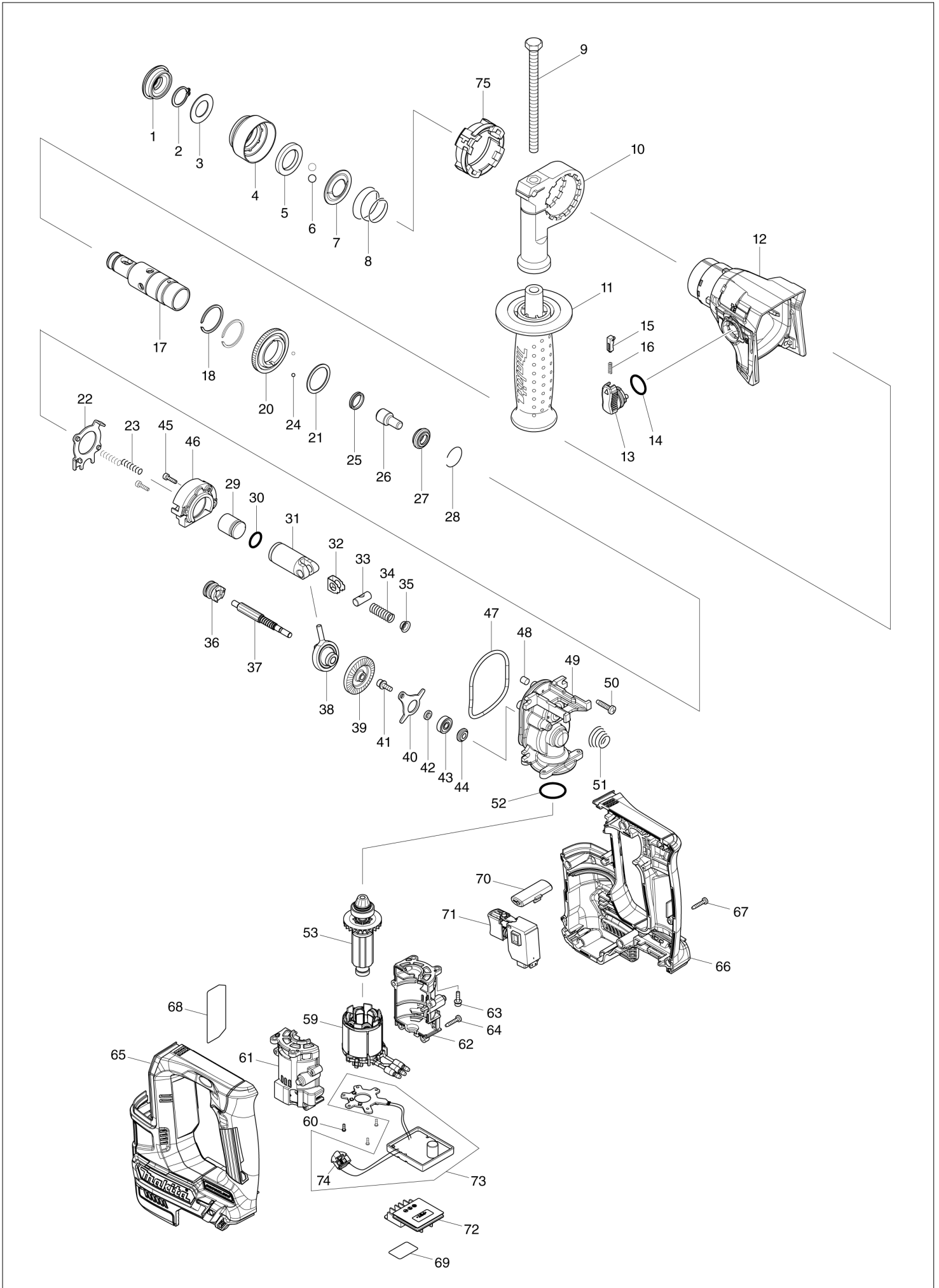
Diagram / Parts List

HR166D

16MM CORDLESS ROTARY HAMMER



(TH) HR166D / 16MM CORDLESS ROTARY HAMMER



TH	THAILAND
-----------	-----------------

HR166D / 16MM CORDLESS ROTARY HAMMER

Item	Sub	Parts No.	Parts Description	Qty	I/C	E/C No.	Close No.	Remark
001		286037-3	CAP 34	1				
002		961057-5	RETAINING RING S-17	1				
003		253377-4	FLAT WASHER 17	1				
004		457214-6	CHUCK COVER	1				
005		257416-2	RING 21	1				
006		216022-2	STEEL BALL 7.0	2				
007		346177-0	GUIDE WASHER	1				
008		232347-6	CONICAL COMP. SPRING 21-29	1				
009		921923-8	HEX. BOLT M8X120	1				
010		417911-6	GRIP BASE	1				
011		158057-6	GRIP 36 COMPLETE	1				
012		144218-4	GEAR HOUSING COMPLETE	1				
	C10	211375-4	BALL BEARING 6805LLB	1				
	C20	213788-5	OIL SEAL 25	1				
013		161569-0	CHANGE LEVER COMPLETE	1				
014		213278-8	O RING 17	1				
015		161568-2	LOCK BUTTON COMPLETE	1				
016		232344-2	COMPRESSION SPRING 3	1				
017		326841-9	TOOL HOLDER	1			DD784	
017-1		326841-9	TOOL HOLDER	1	O	DD784		
018		961135-1	RETAINING(EXT) WR-25	2				
020		221483-3	SPUR GEAR 57	1				
021		267175-0	FLAT WASHER 24	1				
022		161570-5	CHANGE PLATE COMPLETE	1				
023		233194-8	COMPRESSION SPRING 4	2				
024		216019-1	STEEL BALL 3	2				
025		213183-9	X RING 13	1				
026		326843-5	IMPACT BOLT	1				
027		326842-7	RING 10	1				
028		232343-4	RING SPRING 23	1				
029		326844-3	STRIKER	1				
030		213128-7	O RING 12	1				
031		319510-9	PISTON CYLINDER	1				
032		347101-6	GUIDE PLATE	1				
033		326846-9	PISTON JOINT	1				
034		232346-8	COMPRESSION SPRING 8	1				
035		347102-4	SPRING GUIDE	1				
036		326845-1	CLUTCH CAM	1				
037		221482-5	SPUR GEAR 8	1				
038		219026-3	SWASH BEARING 6	1				
039		221481-7	SPIRAL BEVEL GEAR 37	1				
040		347100-8	BEARING RETAINER	1				
041		266273-7	HEX. SOCKET HEAD BOLT M4X12	1				
042		257415-4	RING 5	1				
043		210065-6	BALL BEARING 625ZZ	1				
044		326847-7	RING 5	1				
045		265910-0	HEX. SOCKET HEAD BOLT M3X12	2				
046		144219-2	INNER SUPPORT COMPLETE	1				
047		213092-2	O-RING 60	1			C8340	
047-1		213889-9	O-RING 58	1	<	C8340		
048		443138-2	FILTER	1				
049		319508-6	INNER HOUSING	1			C8340	
049-1		140N37-0	INNER HOUSING COMPLETE	1	<	C8340	DH798	
049-2		312B69-7	INNER HOUSING	1	<	DH798		
050		265995-6	TAPPING SCREW 4X18	4				
051		232345-0	CONICAL COMP. SPRING 8-19	1				
052		213008-7	O RING 22.4	1				
053		619421-1	ROTOR	1			C7536	
053-1		619421-1	ROTOR	1	O	C7536		
059		629244-9	STATOR	1				
060		266490-9	TAPPING SCREW PT 2X6	3				
061		183G09-0	MOTOR CASE SET	1				
	D10		INC. 62					
062		183G09-0	MOTOR CASE SET	1				
	D10		INC. 61					

A:HR166DZ(N)
 B:HR166DWYJ(H)
 C:HR166DWAJ(H)
 D:HR166DWMJ(H)

Interchange
 O : Yes
 X : No
 < : the new part can be substituted for the current.
 > : the current part can be substituted for the new.
 S : Interchangeable as a set.

TH	THAILAND
----	----------

HR166D / 16MM CORDLESS ROTARY HAMMER

Item	Sub	Parts No.	Parts Description	Qty	I/C	E/C No.	Close No.	Remark
063		251510-2	H. S. HEAD BOLT M3X12 WITH WRM	4				
064		266130-9	TAPPING SCREW BIND PT 3X16	4				
065		183G15-5	HOUSING SET	1				
	C10	262182-8	RUBBER RING 6	2				
	C20	263002-9	RUBBER PIN 4	2				
	C30	252126-6	HEX. LOCK NUT M4-7	2				
	D10		INC. 66					
066		183G15-5	HOUSING SET	1				
	C10	262182-8	RUBBER RING 6	2				
	C20	263002-9	RUBBER PIN 4	2				
	C30	252126-6	HEX. LOCK NUT M4-7	2				
	D10		INC. 65					
067		266130-9	TAPPING SCREW BIND PT 3X16	9				
068		853A74-4	HR166D NAME PLATE	1				
069		853A95-6	HR166D SERIAL NO. LABEL	1				
070		457210-4	F/R CHANGE LEVER	1				
071		650689-0	SWITCH C3JW-2B	1				
072		644813-5	TERMINAL	1				
073		620578-3	CONTROLLER	1				
	D10		INC. 74					
074		620553-9	LED CIRCUIT	1				
A01		415486-9	DEPTH GAUGE	1				
A02B		456128-6	BATTERY COVER	1				
A02C		456128-6	BATTERY COVER	1				
A02D		456128-6	BATTERY COVER	1				
A03B		***DC10WD	DC10WD BATTERY CHARGER	1				
	D10		COMPO-PARTS					
A03C		***DC10WD	DC10WD BATTERY CHARGER	1				
	D10		COMPO-PARTS					
A03D		***DC10WD	DC10WD BATTERY CHARGER	1				
	D10		COMPO-PARTS					
A04B		197393-5	BATTERY BL1016 SET	2			C2691	
A04C		197396-9	BATTERY BL1021B SET	2			C2801	
A04D		197406-2	BATTERY BL1041B SET	2			C2801	
A04-1B		199291-9	BATTERY BL1016 SET	2	<	C2691	D0163	
A04-1C		199290-1	BATTERY BL1021B SET	2	<	C2801	D0164	
A04-1D		199289-6	BATTERY BL1041B SET	2	<	C2801	D0165	
A04-2B		199291-9	BATTERY BL1016 SET	2	<	D0163		
A04-2C		199290-1	BATTERY BL1021B SET	2	<	D0164		
A04-2D		199289-6	BATTERY BL1041B SET	2	<	D0165		
A05B		821550-0	CONNECTOR PLASTIC CASE (TYPE2)	1				
	C10	453974-8	LATCH	4				
A05C		821550-0	CONNECTOR PLASTIC CASE (TYPE2)	1				
	C10	453974-8	LATCH	4				
A05D		821550-0	CONNECTOR PLASTIC CASE (TYPE2)	1				
	C10	453974-8	LATCH	4				
A06B		838683-4	INNER FITMENT	1			B9507	
A06C		838683-4	INNER FITMENT	1			B9507	
A06D		838683-4	INNER FITMENT	1			B9507	
A06-1B		839245-1	INNER TRAY	1	S	B9507		
A06-1C		839245-1	INNER TRAY	1	S	B9507		
A06-1D		839245-1	INNER TRAY	1	S	B9507		
A07B		812K57-3	HR166DWYJ INDICATION LABEL	1				
A07C		812K63-8	HR166DWAJ INDICATION LABEL	1				
A07D		812K70-1	HR166DWMJ INDICATION LABEL	1				
A08B		812K59-9	HR166DWYJ PLASTIC CASE LABEL	2				
A08C		812K65-4	HR166DWAJ PLASTIC CASE LABEL	2				
A08D		812K72-7	HR166DWMJ PLASTIC CASE LABEL	2				
A09B		835121-7	SPONGE 60-80	1	S		B9507	
A09C		835121-7	SPONGE 60-80	1	S		B9507	
A09D		835121-7	SPONGE 60-80	1	S		B9507	
B01		198564-7	HAMMER SERVICE KIT	1		Y08290		
	C10	195127-0	OIL VESSEL SET	1		Y08290		
	D10		INC. 1,2,6,25,28,30			Y08290		
B02		191D07-2	SIDE GRIP SET	1		Y08751		

A:HR166DZ(N)
 B:HR166DWYJ(H)
 C:HR166DWAJ(H)
 D:HR166DWMJ(H)

Interchange
 O : Yes
 X : No
 < : the new part can be substituted for the current.
 > : the current part can be substituted for the new.
 S : Interchangeable as a set.

