



TH	THAILAND
----	----------

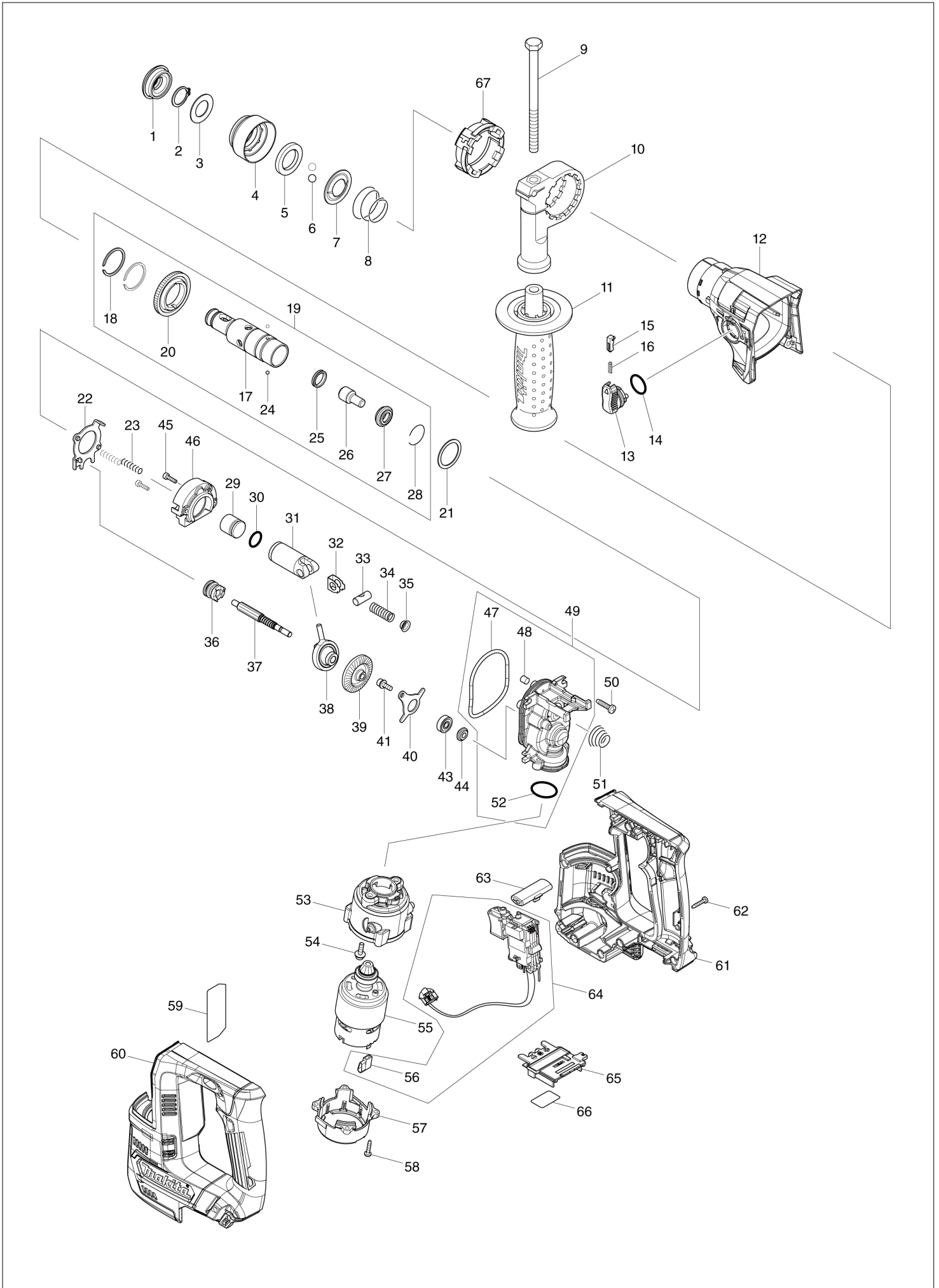
Diagram / Parts List

HR140D

14MM CORDLESS ROTARY HAMMER



(TH) HR140D / 14MM CORDLESS ROTARY HAMMER



TH	THAILAND
----	----------

HR140D / 14MM CORDLESS ROTARY HAMMER

Item	Sub	Parts No.	Parts Description	Qty	I/C	E/C No.	Close No.	Remark
001		286037-3	CAP 34	1				
002		961057-5	RETAINING RING S-17	1				
003		253377-4	FLAT WASHER 17	1				
004		457214-6	CHUCK COVER	1				
005		257416-2	RING 21	1				
006		216022-2	STEEL BALL 7.0	2				
007		346177-0	GUIDE WASHER	1				
008		232347-6	CONICAL COMP. SPRING 21-29	1				
009		921923-8	HEX. BOLT M8X120	1				
010		417911-6	GRIP BASE	1				
011		158057-6	GRIP 36 COMPLETE	1				
	C10	931402-8	HEX. NUT M8	1				
012		144575-0	GEAR HOUSING COMPLETE	1				
	C10	211375-4	BALL BEARING 6805LLB	1				
	C20	213788-5	OIL SEAL 25	1				
013		161569-0	CHANGE LEVER COMPLETE	1				
014		213278-8	O RING 17	1				
015		161568-2	LOCK BUTTON COMPLETE	1				
016		232344-2	COMPRESSION SPRING 3	1				
017		326841-9	TOOL HOLDER	1			DD784	
017-1		326841-9	TOOL HOLDER	1	O	DD784		
018		961135-1	RETAINING(EXT) WR-25	2				
019		135933-1	TOOL HOLDER ASS'Y	1				
	D10		INC. 17,18,20,21,24-28				Y08078	
	D11		INC. 17,18,20,24-28			Y08078		
020		221483-3	SPUR GEAR 57	1				
021		267175-0	FLAT WASHER 24	1				
022		161570-5	CHANGE PLATE COMPLETE	1				
023		233194-8	COMPRESSION SPRING 4	2				
024		216019-1	STEEL BALL 3	2				
025		213183-9	X RING 13	1				
026		326843-5	IMPACT BOLT	1				
027		326842-7	RING 10	1				
028		232343-4	RING SPRING 23	1				
029		326995-2	STRIKER	1				
030		213128-7	O RING 12	1				
031		319510-9	PISTON CYLINDER	1				
032		347101-6	GUIDE PLATE	1				
033		326846-9	PISTON JOINT	1				
034		232346-8	COMPRESSION SPRING 8	1				
035		347102-4	SPRING GUIDE	1				
036		326845-1	CLUTCH CAM	1				
037		221482-5	SPUR GEAR 8	1				
038		219026-3	SWASH BEARING 6	1			C9175	
038-1		219031-0	SWASH BEARING 6	1	O	C9175		
039		221553-8	SPIRAL BEVEL GEAR 37	1				
040		347100-8	BEARING RETAINER	1				
041		266273-7	HEX. SOCKET HEAD BOLT M4X12	1				
043		210065-6	BALL BEARING 625ZZ	1				
044		326847-7	RING 5	1				
045		265910-0	HEX. SOCKET HEAD BOLT M3X12	2				
046		144219-2	INNER SUPPORT COMPLETE	1				
047		213092-2	O-RING 60	1			C8340	
047-1		213889-9	O-RING 58	1	<	C8340		
048		443138-2	FILTER	1				
049		135926-8	INNER HOUSING ASSEMBLY	1			C8340	
	D10		INC. 47,48,52				C8340	
049-1		136111-6	INNER HOUSING ASSY	1	<	C8340	DR528	
	D10		INC. 47,48,52			C8340	DR528	
049-2		137061-8	INNER HOUSING ASS'Y	1	<	DR528		
	D10		INC. 47,48,52			DR528		
050		265995-6	TAPPING SCREW 4X18	4				
051		232345-0	CONICAL COMP. SPRING 8-19	1				
052		213008-7	O RING 22.4	1				
053		457784-5	MOTOR CASE A	1				

A:HR140DZ(N)
 B:HR140DWYJ(H)
 C:HR140DWAJ(H)
 D:HR140DWMJ(H)

Interchange
 O : Yes
 X : No
 < : the new part can be substituted for the current.
 > : the current part can be substituted for the new.
 S : Interchangeable as a set.

TH	THAILAND
-----------	-----------------

HR140D / 14MM CORDLESS ROTARY HAMMER

Item	Sub	Parts No.	Parts Description	Qty	I/C	E/C No.	Close No.	Remark
054		251565-7	H. S. HEAD BOLT M4X14	2				
055		629285-5	DC MOTOR	1				
	C10	213162-7	O RING 14	1				
056		686039-3	RECEPTACLE SLEEVE	1				
057		457785-3	MOTOR CASE B	1				
058		266130-9	TAPPING SCREW BIND PT 3X16	4				
059		853R23-3	HR140D NAME PLATE	1				
060		183H16-9	HOUSING SET	1				
	C10	252126-6	HEX. LOCK NUT M4-7	2				
	C20	262182-8	RUBBER RING 6	2				
	C30	263002-9	RUBBER PIN 4	2				
	D10		INC. 61					
061		183H16-9	HOUSING SET	1				
	C10	252126-6	HEX. LOCK NUT M4-7	2				
	C20	262182-8	RUBBER RING 6	2				
	C30	263002-9	RUBBER PIN 4	2				
	D10		INC. 60					
062		266130-9	TAPPING SCREW BIND PT 3X16	9				
063		457786-1	F/R CHANGE LEVER	1				
064		539237-7	SWITCH UNIT ASS'Y	1				
	C10	654086-2	RECEPTACLE	2		DE372		
	C20	654199-9	RECEPTACLE	1		DE372		
	D10		INC. 56					
065		644813-5	TERMINAL	1				
066		853R45-3	HR140D SERIAL NO. LABEL	1				
A01		415486-9	DEPTH GAUGE	1				
A03B		821550-0	CONNECTOR PLASTIC CASE (TYPE2)	1				
	C10	453974-8	LATCH	4				
A03C		821550-0	CONNECTOR PLASTIC CASE (TYPE2)	1				
	C10	453974-8	LATCH	4				
A03D		821550-0	CONNECTOR PLASTIC CASE (TYPE2)	1				
	C10	453974-8	LATCH	4				
A04B		813R34-0	HR140DWYJ PLASTIC CASE LABEL	2				
A04C		813R43-9	HR140DWAJ PLASTIC CASE LABEL	2				
A04D		813R54-4	HR140DWMJ PLASTIC CASE LABEL	2				
A05B		813R32-4	HR140DWYJ INDICATION LABEL	1				
A05C		813R41-3	HR140DWAJ INDICATION LABEL	1				
A05D		813R52-8	HR140DWMJ INDICATION LABEL	1				
A06B		839245-1	INNER TRAY	1				
A06C		839245-1	INNER TRAY	1				
A06D		839245-1	INNER TRAY	1				
A07B		456128-6	BATTERY COVER	1				
A07C		456128-6	BATTERY COVER	1				
A07D		456128-6	BATTERY COVER	1				
A08B		***DC10WD	DC10WD BATTERY CHARGER	1				
A08C		***DC10WD	DC10WD BATTERY CHARGER	1				
A08D		***DC10WD	DC10WD BATTERY CHARGER	1				
A09B		197393-5	BATTERY BL1016 SET	2			C2691	
A09C		197396-9	BATTERY BL1021B SET	2			C2801	
A09D		197406-2	BATTERY BL1041B SET	2			C2801	
A09-1B		199291-9	BATTERY BL1016 SET	2	<	C2691	D0163	
A09-1C		199290-1	BATTERY BL1021B SET	2	<	C2801	D0164	
A09-1D		199289-6	BATTERY BL1041B SET	2	<	C2801	D0165	
A09-2B		199291-9	BATTERY BL1016 SET	2	<		D0163	
A09-2C		199290-1	BATTERY BL1021B SET	2	<		D0164	
A09-2D		199289-6	BATTERY BL1041B SET	2	<		D0165	
B01		198564-7	HAMMER SERVICE KIT	1		Y08290		
	C10	195127-0	OIL VESSEL SET	1		Y08290		
	D10		INC. 1,2,6,25,28,30			Y08290		
E01		818S14-7	CLEAR LABEL	1		C5224	DM148	
F21		199245-6	DUSTCUP SET	1		C2865		

A:HR140DZ(N)
B:HR140DWYJ(H)
C:HR140DWAJ(H)
D:HR140DWMJ(H)

Interchange
O : Yes
X : No
< : the new part can be substituted for the current.
> : the current part can be substituted for the new.
S : Interchangeable as a set.