



TH	THAILAND
----	----------

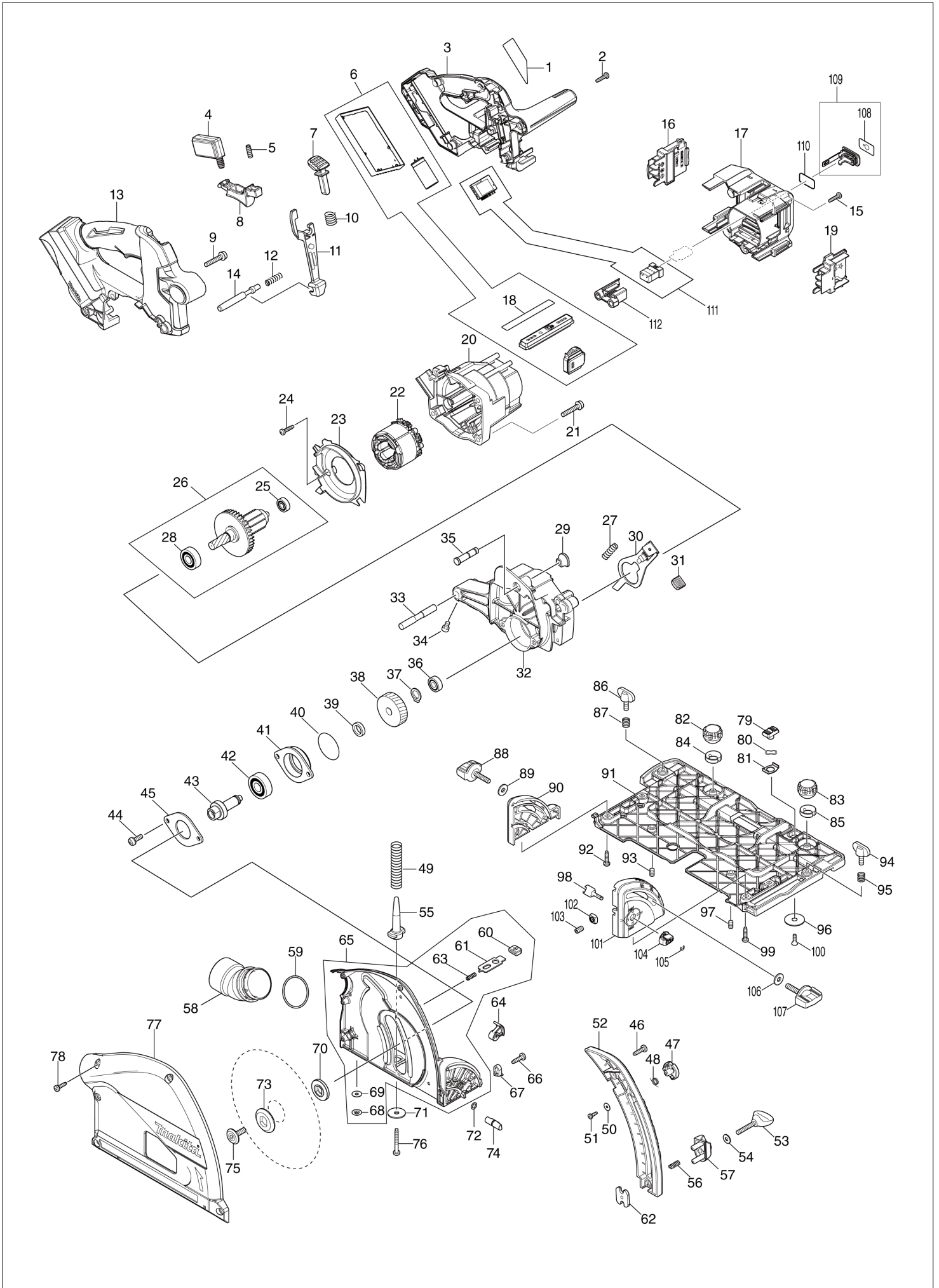
Diagram / Parts List

DSP601

165MM CORDLESS PLUNGE CUT SAW



(TH) DSP601 / 165MM CORDLESS PLUNGE CUT SAW



TH	THAILAND
-----------	-----------------

DSP601 / 165MM CORDLESS PLUNGE CUT SAW

Item	Sub	Parts No.	Parts Description	Qty	I/C	E/C No.	Close No.	Remark
001		853V15-6	DSP601 NAME PLATE	1				
002		265995-6	TAPPING SCREW 4X18	8				
003		183H79-5	HANDLE REAR COVER SET	1				
	C10	263005-3	RUBBER PIN 6	4				
	D10		INC. 13,17					
004		651083-9	SWITCH C3XA-1PSPM	1				
005		234173-9	COMPRESSION SPRING 4	1				
006A		135915-3	CONTROLLER ASS'Y	1			C2064	
	C10	620691-7	SUB CONTROLLER	1			C2064	
	D10		INC. 18				C2064	
006-1A		135974-7	CONTROLLER ASSY	1	<	C2064	DJ138	
	C10	620691-7	SUB CONTROLLER	1		C2064	DJ138	
	D10		INC. 18			C2064	DJ138	
006-1B		135974-7	CONTROLLER ASSY	1			DJ138	
	C10	620691-7	SUB CONTROLLER	1			DJ138	
	D10		INC. 18				DJ138	
006-2		136857-4	CONTROLLER ASS'Y	1	S	DJ138		
	C10	620691-7	SUB CONTROLLER	1		DJ138		
	D10		INC. 18			DJ138		
007		419629-5	LOCK OFF BUTTON	1				
008		457748-9	SWITCH LEVER	1				
009		911253-5	PAN HEAD SCREW M5X30	2			DK134	
009-1		911253-5	PAN HEAD SCREW M5X30	2	O	DK134		
010		233089-5	COMPRESSION SPRING 12	1				
011		457749-7	LOCK PLATE	1				
012		233267-7	COMPRESSION SPRING 7	1				
013		183H79-5	HANDLE REAR COVER SET	1				
	C10	263005-3	RUBBER PIN 6	4				
	D10		INC. 3,17					
014		324709-3	LOCK PIN 8	1				
015		265995-6	TAPPING SCREW 4X18	5				
016		643874-2	TERMINAL	1				
017		183H79-5	HANDLE REAR COVER SET	1				
	C10	263005-3	RUBBER PIN 6	4				
	D10		INC. 3,13					
018		813D03-7	INDICATION LABEL	1				
019		643874-2	TERMINAL	1				
020		457750-2	MOTOR HOUSING	1				
021		911253-5	PAN HEAD SCREW M5X30	4				
022		629275-8	STATOR	1			DJ138	
022-1		629B69-3	STATOR	1	S	DJ138		
023		457751-0	BAFFLE PLATE	1				
024		265995-6	TAPPING SCREW 4X18	2				
025		210022-4	BALL BEARING 626DDW	1				
026		519448-0	ROTOR ASSY	1				
	D10		INC. 25,28					
027		233084-5	COMPRESSION SPRING 6	1				
028		211131-2	BALL BEARING 6001DDW	1				
029		286040-4	CAP	1				
030		345742-2	SHAFT LOCK	1				
031		286039-9	CAP	1				
032		144586-5	GEAR HOUSING COMPLETE	1				
	C10	263002-9	RUBBER PIN 4	1				
033A		326960-1	PIN 8	1			C0221	
033-1A		324716-6	PIN 8	1	<	C0221	DH707	
033-1B		324716-6	PIN 8	1			DH707	
033-2		327B66-0	PIN 8	1	O	DH707		
034		265907-9	HEX. SOCKET HEAD BOLT M5X10	1				
035		324708-5	STOPPER PIN 8	1				
036		211021-9	BALL BEARING 607LLB	1				
037		961052-5	RETAINING RING (EXT) S-12	1				
038		221548-1	HELICAL GEAR 41	1				
039		257010-0	RING 12	1				
040		213512-6	O RING 39	1				
041		318088-9	BEARING BOX	1				

A: DSP601ZU(N)
B: DSP601Z(N)

Interchange
O : Yes
X : No
< : the new part can be substituted for the current.
> : the current part can be substituted for the new.
S : Interchangeable as a set.

TH	THAILAND
----	----------

DSP601 / 165MM CORDLESS PLUNGE CUT SAW

Item	Sub	Parts No.	Parts Description	Qty	I/C	E/C No.	Close No.	Remark
042		211129-9	BALL BEARING 6201DDW	1				
043		324707-7	SPINDLE	1				
044		911221-8	PAN HEAD SCREW M5X16	2				
045		285689-7	BEARING RETAINER 55	1				
046		266034-5	TAPPING SCREW CT 4X16	2				
047		419630-0	LOCK LEVER	1				
048		231665-9	TORSION SPRING 7	1				
049		233479-2	COMPRESSION SPRING 11	1				
050		253821-1	FLAT WASHER 3	1				
051		266007-8	TAPPING SCREW BIND PT 3X10	1				
052		457756-0	DEPTH GUIDE	1				
053		251867-1	THUMB SCREW M5X30	1				
054		941101-4	FLAT WASHER 5	1				
055		419624-5	SPRING HOLDER	1				
056		231372-4	COMPRESSION SPRING 5	1				
057		419623-7	STOPPER BLOCK	1				
058		457752-8	DUST NOZZLE	1				
059		213460-9	O RING 35	1				
060		286041-2	CAP 14	2				
061		345747-2	SPACER PLATE	2				
062		345744-8	NUT PLATE	1				
063		233025-1	COMPRESSION SPRING 2	2				
064		144867-7	LEVER 20 COMPLETE	1				
	C10	263002-9	RUBBER PIN 4	1				
065A		144868-5	BLADE CASE COMPLETE	1			C2424	
	D10		INC. 60,61,63,68,69				C2424	
065-1A		140D56-6	BLADE CASE COMPLETE	1	O	C2424		
	D10		INC. 60,61,63,68,69			C2424		
065-1B		140D56-6	BLADE CASE COMPLETE	1				
	D10		INC. 60,61,63,68,69					
066		266034-5	TAPPING SCREW CT 4X16	1				
067		419632-6	POSITION PLATE	1				
068		259008-3	PUSH NUT 4	2				
069A		253874-0	FLAT WASHER 4	2			C2424	
069-1A		347392-9	PLATE	2	O	C2424		
069-1B		347392-9	PLATE	2				
070		224593-5	INNER FLANGE 35	1				
071		253010-8	FLAT WASHER 6	1				
072		213021-5	O RING 5	1				
073		224409-4	OUTER FLANGE 35	1				
074		324710-8	PIN 8	1				
075		266403-0	HEX. SOCKET HEAD BOLT M6	1				
076		266053-1	TAPPING SCREW 4X35	1				
077A		319605-8	BLADE CASE COVER	1			C1804	
077-1A		319702-0	BLADE CASE COVER	1	S	C1804		
077-1B		319702-0	BLADE CASE COVER	1				
078		266034-5	TAPPING SCREW CT 4X16	5				
079		458092-7	SLIDE LEVER	1				
080		253932-2	WAVE WASHER 10	1				
081		345977-5	PLATE	1				
082		265775-0	THUMB SCREW M4X3	1				
083		265775-0	THUMB SCREW M4X3	1				
084		419627-9	HOLDER	1				
085		419627-9	HOLDER	1				
086		265701-9	THUMB SCREW M6X14	1				
087		231316-4	COMPRESSION SPRING 7	1			DJ857	
087-1		231240-1	COMPRESSION SPRING 7	1	O	DJ857		
088		265776-8	THUMB SCREW M6X26	1				
089		253111-2	FLAT WASHER 6	1				
090		419596-4	REAR ANGULAR GUIDE	1				
091		319604-0	BASE	1			DA522	
091-1		312B95-6	BASE	1	S	DA522		
092		265995-6	TAPPING SCREW 4X18	2				
093		266225-8	H.S.SET SCREW(FLAT POINT)M6X8	1				
094		265701-9	THUMB SCREW M6X14	1				

A:DSP601ZU(N)
B:DSP601Z(N)

Interchange
O : Yes
X : No
< : the new part can be substituted for the current.
> : the current part can be substituted for the new.
S : Interchangeable as a set.

