



| | |
|----|----------|
| TH | THAILAND |
|----|----------|

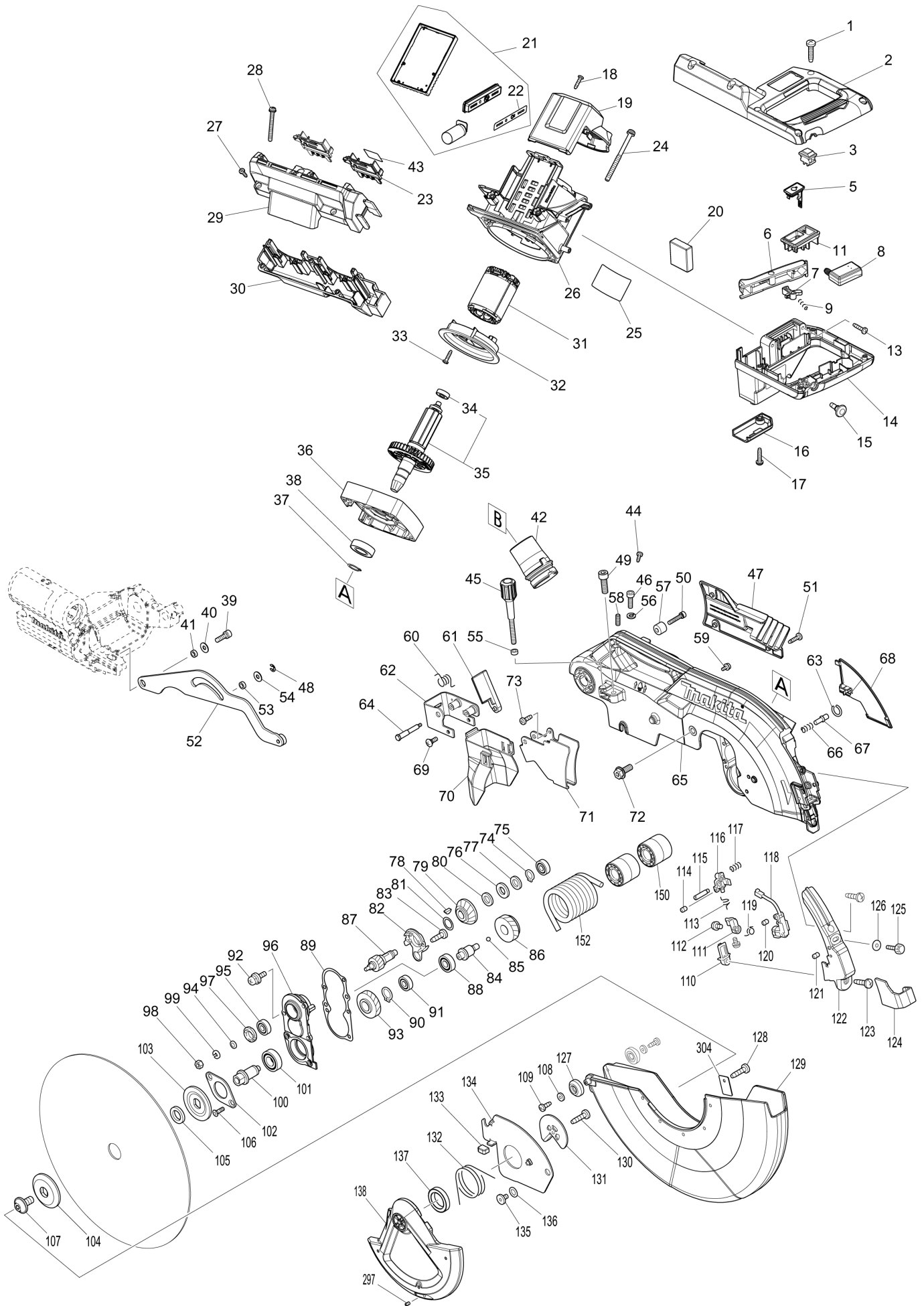
Diagram / Parts List

DLS211

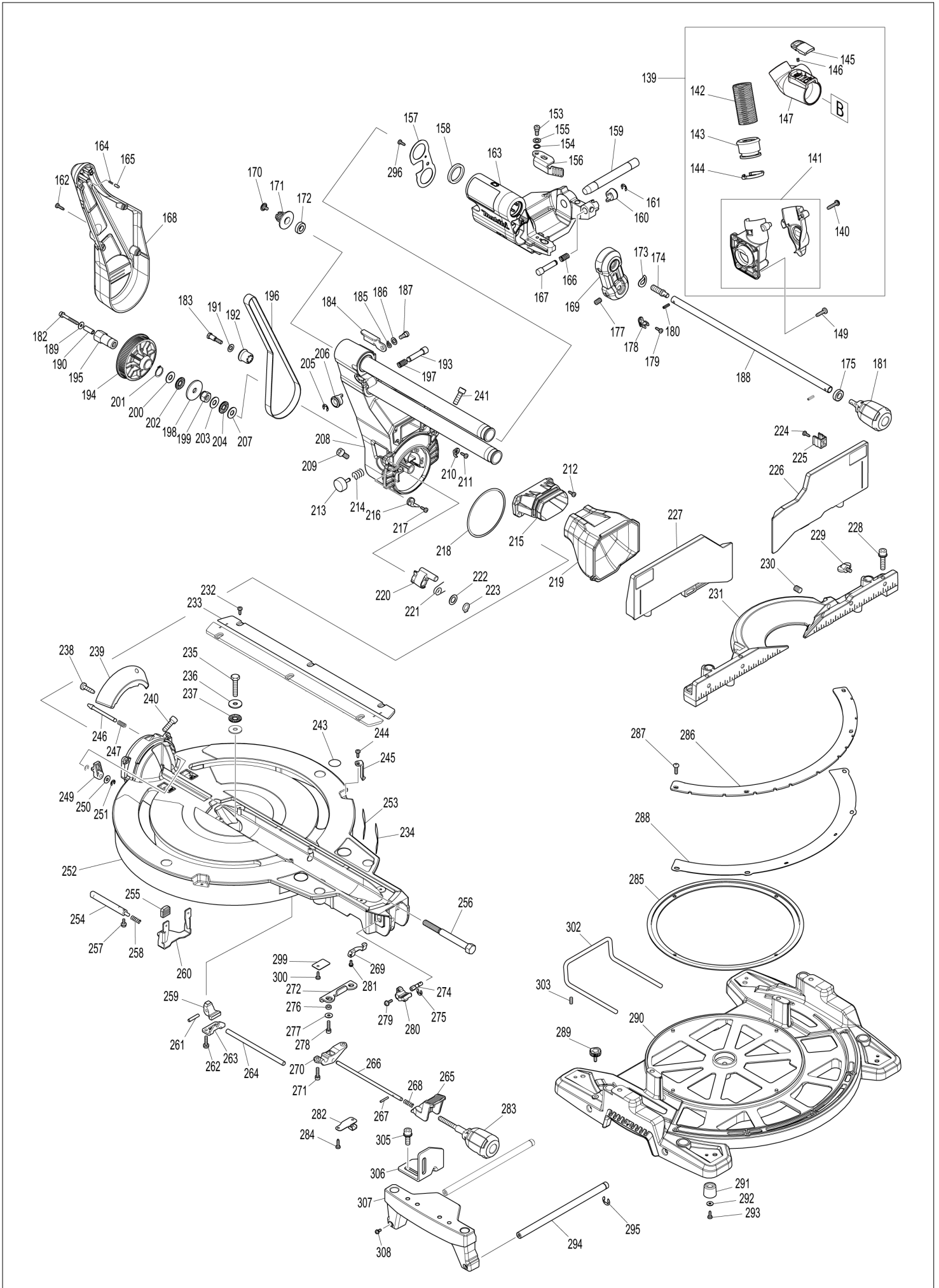
305MM DC SLIDE CPD. MITER SAW



(TH) DLS211 / 305MM DC SLIDE CPD. MITER SAW



(TH) DLS211 / 305MM DC SLIDE CPD. MITER SAW



| | |
|-----------|-----------------|
| TH | THAILAND |
|-----------|-----------------|

DLS211 / 305MM DC SLIDE CPD. MITER SAW

| Item | Sub | Parts No. | Parts Description | Qty | I/C | E/C No. | Close No. | Remark |
|-------|-----|-----------|------------------------------|-----|-----|---------|-----------|--------|
| 001 | | 265995-6 | TAPPING SCREW 4X18 | 6 | | | | |
| 002 | | 183H70-3 | HANDLE SET | 1 | | | | |
| | C10 | 810486-8 | CAUTION LABEL | 1 | | | | |
| | D10 | | INC. 14 | | | | | |
| 003 | | 632L09-2 | SWITCH UNIT | 1 | | | | |
| 005 | | 140G30-2 | CAP COMPLETE | 1 | | | | |
| | C10 | 213218-6 | O RING 16 | 1 | | | DA223 | |
| | C11 | 213A05-9 | O-RING16 | 1 | O | DA223 | | |
| | C20 | 818H48-4 | CAP LABEL | 1 | | | | |
| 006 | | 457935-0 | SWITCH LEVER | 1 | | | | |
| 007 | | 416356-5 | LOCK-OFF LEVER | 1 | | | | |
| 008 | | 651083-9 | SWITCH C3XA-1PSPM | 1 | | | | |
| 009 | | 231026-3 | COMPRESSION SPRING 4 | 1 | | | | |
| 011 | | 458079-9 | SWITCH COVER | 1 | | | | |
| 013 | | 265995-6 | TAPPING SCREW 4X18 | 3 | | | | |
| 014 | | 183H70-3 | HANDLE SET | 1 | | | | |
| | C10 | 810486-8 | CAUTION LABEL | 1 | | | | |
| | D10 | | INC. 2 | | | | | |
| 015 | | 451037-4 | SWITCH BUTTON | 1 | | | | |
| 016 | | 451000-7 | LEAD COVER HOLDER | 1 | | | | |
| 017 | | 265995-6 | TAPPING SCREW 4X18 | 1 | | | | |
| 018 | | 265995-6 | TAPPING SCREW 4X18 | 2 | | | | |
| 019 | | 457933-4 | REAR COVER | 1 | | | | |
| 020 | | 620742-6 | POWER SUPPLY CIRCUIT | 1 | | | | |
| 021 | | 620B81-6 | CONTROLLER COMPLETE | 1 | | | DA943 | |
| | D10 | | INC. 22 | | | | DA943 | |
| 021-1 | | 620H47-2 | CONTROLLER COMPLETE | 1 | < | DA943 | DF878 | |
| | D10 | | INC. 22 | | | DA943 | DF878 | |
| 021-2 | | 620H47-2 | CONTROLLER COMPLETE | 1 | O | DF878 | | |
| | D10 | | INC. 22 | | | DF878 | | |
| 022 | | 813T74-0 | INDICATION LABEL | 1 | | | | |
| 023 | | 643874-2 | TERMINAL | 2 | | | | |
| 024 | | 911948-0 | PAN HEAD SCREW M6X80 WITH WR | 4 | | | | |
| 025 | | 855P61-9 | DLS211 NAME PLATE | 1 | | | | |
| 026 | | 457906-7 | MOTOR HOUSING | 1 | | | | |
| 027 | | 265995-6 | TAPPING SCREW 4X18 | 3 | | | | |
| 028 | | 911273-9 | PAN HEAD SCREW M5X50 | 2 | | | | |
| 029 | | 183L40-6 | BATTERY HOUSING SET | 1 | | | | |
| | C10 | 263005-3 | RUBBER PIN 6 | 4 | | | | |
| | D10 | | INC. 30 | | | | | |
| 030 | | 183L40-6 | BATTERY HOUSING SET | 1 | | | | |
| | C10 | 263005-3 | RUBBER PIN 6 | 4 | | | | |
| | D10 | | INC. 29 | | | | | |
| 031 | | 629282-1 | STATOR | 1 | | | DL164 | |
| 031-1 | | 629B80-5 | STATOR | 1 | S | DL164 | | |
| 032 | | 457934-2 | BAFFLE PLATE | 1 | | | DA741 | |
| 032-1 | | 413E35-6 | BAFFLE PLATE | 1 | O | DA741 | | |
| 033 | | 265995-6 | TAPPING SCREW 4X18 | 2 | | | | |
| 034 | | 211021-9 | BALL BEARING 607LLB | 1 | | | | |
| 035 | | 519554-1 | ROTOR ASS'Y | 1 | | | | |
| | D10 | | INC. 34 | | | | | |
| 036 | | 318471-0 | MOTOR BRACKET | 1 | | | | |
| 037 | | 961057-5 | RETAINING RING S-17 | 1 | | | | |
| 038 | | 210301-0 | BALL BEARING 6003DDW | 1 | | | | |
| 039 | | 922331-6 | HEX. SOCKET HEAD BOLT M6X20 | 1 | | | | |
| 040 | | 253804-1 | FLAT WASHER 6 | 1 | | | | |
| 041 | | 257461-7 | RING 6 | 1 | | | | |
| 042 | | 459250-8 | DUST NOZZLE | 1 | | | | |
| 043 | | 855P68-5 | DLS211 SERIAL NO. LABEL | 1 | | | | |
| 044 | | 266034-5 | TAPPING SCREW CT 4X16 | 1 | | | | |
| 045 | | 251554-2 | THUMB SCREW M6X40 | 1 | | | | |
| 046 | | 265A36-4 | H.S.H.BOLT M6X16 | 1 | | | | |
| 047 | | 458146-0 | LOGO PLATE | 1 | | | | |
| 048 | | 961018-5 | STOP RING E-5 | 1 | | | | |
| 049 | | 251547-9 | HEX.SOCKET HEAD BOLT M8X25 | 1 | | | | |

A:DLS211Z(N)

Interchange
O : Yes
X : No
< : the new part can be substituted for the current.
> : the current part can be substituted for the new.
S : Interchangeable as a set.

| | |
|-----------|-----------------|
| TH | THAILAND |
|-----------|-----------------|

DLS211 / 305MM DC SLIDE CPD. MITER SAW

| Item | Sub | Parts No. | Parts Description | Qty | I/C | E/C No. | Close No. | Remark |
|------|-----|-----------|--------------------------------|-----|-----|---------|-----------|--------|
| 050 | | 922251-4 | HEX. SOCKET HEAD BOLT M5X30 | 1 | | | | |
| 051 | | 266034-5 | TAPPING SCREW CT 4X16 | 3 | | | | |
| 052 | | 140J53-8 | LINK PLATE COMPLETE | 1 | | | | |
| 053 | | 257461-7 | RING 6 | 1 | | | | |
| 054 | | 253804-1 | FLAT WASHER 6 | 1 | | | | |
| 055 | | 262190-9 | URETHANE RING 5 | 1 | | | | |
| 056 | | 253428-3 | SPRING WASHER 6 | 1 | | | | |
| 057 | | 257449-7 | SLEEVE 6 | 1 | | | | |
| 058 | | 266321-2 | H.S.SET SCREW(FLAT POINT)M6X16 | 1 | | | | |
| 059 | | 911114-9 | PAN HEAD SCREW M4X10 | 2 | | | | |
| 060 | | 232412-1 | TORSION SPRING 11 | 1 | | | | |
| 061 | | 457764-1 | DUST GUIDE PLATE | 1 | | | | |
| 062 | | 161647-6 | GUARD HOLDER | 1 | | | | |
| 063 | | 231928-3 | RING SPRING 8 | 1 | | | | |
| 064 | | 251544-5 | SHOULDER HEX. BOLT M4 | 1 | | | | |
| 065 | | 140J89-7 | BLADE CASE COMPLETE | 1 | | | | |
| | C10 | 263005-3 | RUBBER PIN 6 | 3 | | | | |
| | C20 | 810064-4 | LASER BEAM CAUTION LABEL | 1 | | | | |
| | C30 | 810354-5 | LASER BEAM LABEL | 1 | | | | |
| 066 | | 231240-1 | COMPRESSION SPRING 7 | 1 | | | | |
| 067 | | 256633-1 | PIN 6 | 1 | | | | |
| 068 | | 458148-6 | LEAD COVER | 1 | | | | |
| 069 | | 265028-7 | + PAN HEAD SCREW M4X11 | 1 | | | | |
| 070 | | 422235-7 | GUARD | 1 | | | | |
| 071 | | 347308-4 | GUARD PLATE | 1 | | | | |
| 072 | | 266283-4 | HEX. SOCKET HEX. BOLT M8X20 | 1 | | | | |
| 073 | | 266020-6 | TAPPING SCREW 4X12 | 1 | | | | |
| 074 | | 961052-5 | RETAINING RING (EXT) S-12 | 1 | | | | |
| 075 | | 210005-4 | BALL BEARING 608DDW | 1 | | | | |
| 076 | | 261104-5 | RUBBER WASHER 12 | 1 | | | | |
| 077 | | 253744-3 | FLAT WASHER 12 | 1 | | | | |
| 078 | | 254001-2 | WOODRUFF KEY 4 | 1 | | | | |
| 079 | | 227550-2 | SPIRAL BEVEL GEAR 32 | 1 | | | | |
| 080 | | 253744-3 | FLAT WASHER 12 | 1 | | | | |
| 081 | | 253313-0 | THIN WASHER 14 | 1 | | | | |
| 082 | | 451002-3 | GREASE HOLDER | 1 | | | | |
| 083 | | 266026-4 | TAPPING SCREW BIND CT 4X12 | 2 | | | | |
| 084 | | 325643-0 | GEAR SHAFT | 1 | | | | |
| 085 | | 216049-2 | STEEL BALL 4 | 1 | | | | |
| 086 | | 227702-5 | HELICAL GEAR 27 | 1 | | | | |
| 087 | | 227701-7 | HELICAL GEAR 14 | 1 | | | | |
| 088 | | 210067-2 | BALL BEARING 6000ZZ | 1 | | | | |
| 089 | | 442147-8 | GASKET | 1 | | | | |
| 090 | | 961055-9 | RETAINING RING S-15 | 1 | | | | |
| 091 | | 210005-4 | BALL BEARING 608DDW | 1 | | | | |
| 092 | | 911223-4 | PAN HEAD SCREW M5X16 | 3 | | | | |
| 093 | | 227703-3 | HELICAL GEAR 28 | 1 | | | | |
| 094 | | 267010-2 | FLAT WASHER 5 | 1 | | | | |
| 095 | | 210005-4 | BALL BEARING 608DDW | 1 | | | | |
| 096 | | 158957-0 | BEARING BOX COMPLETE | 1 | | | | |
| | C10 | 263002-9 | RUBBER PIN 4 | 1 | | | | |
| 097 | | 285847-5 | BEARING RETAINER 14-23 | 1 | | | | |
| 098 | | 931202-6 | HEX. NUT M5 | 1 | | | | |
| 099 | | 253427-5 | SPRING WASHER 5 | 1 | | | | |
| 100 | | 325644-8 | SPINDLE | 1 | | | | |
| 101 | | 211236-8 | BALL BEARING 6002DDW | 1 | | | | |
| 102 | | 285732-2 | BEARING RETAINER 51 | 1 | | | | |
| 103 | | 224431-1 | INNER FLANGE 53 | 1 | | | | |
| 104 | | 224432-9 | OUTER FLANGE 53 | 1 | | | | |
| 105 | | 257060-5 | RING 15.8 | 1 | | | | |
| 106 | | 265034-2 | + COUNTERSUNK HEAD SCREW M5X1 | 2 | | | | |
| 107 | | 266755-9 | HEX.SOCKET HEAD BOLT M10X20 | 1 | | | | |
| 108 | | 941051-3 | FLAT WASHER 4 | 2 | | | | |
| 109 | | 266020-6 | TAPPING SCREW 4X12 | 2 | | | | |
| 110 | | 418104-8 | LENS | 1 | | | | |

A:DLS211Z(N)

Interchange
 O : Yes
 X : No
 < : the new part can be substituted for the current.
 > : the current part can be substituted for the new.
 S : Interchangeable as a set.

| | |
|----|----------|
| TH | THAILAND |
|----|----------|

DLS211 / 305MM DC SLIDE CPD. MITER SAW

| Item | Sub | Parts No. | Parts Description | Qty | I/C | E/C No. | Close No. | Remark |
|-------|-----|-----------|-------------------------------|-----|-----|---------|-----------|--------|
| 111 | | 419378-4 | BLOCK B | 1 | | | | |
| 112 | | 911003-8 | PAN HEAD SCREW M3X6 | 2 | | | | |
| 113 | | 231664-1 | TORSION SPRING 9 | 1 | | | | |
| 114 | | 266318-1 | H.S.SET SCREW(FLAT POINT)M4X6 | 1 | | | | |
| 115 | | 266306-8 | SHOULDER SCREW M5 | 1 | | | | |
| 116 | | 419379-2 | BLOCK C | 1 | | | | |
| 117 | | 233471-8 | COMPRESSION SPRING 6 | 1 | | | | |
| 118 | | 638651-5 | LASER CIRCUIT COMPLETE | 1 | | | | |
| 119 | | 231664-1 | TORSION SPRING 9 | 1 | | | | |
| 120 | | 266318-1 | H.S.SET SCREW(FLAT POINT)M4X6 | 1 | | | | |
| 121 | | 266229-0 | H.S.SET SCREW(CUP POINT)M5X8 | 2 | | | | |
| 122 | | 458903-6 | LASER COVER | 1 | | | | |
| 123 | | 266034-5 | TAPPING SCREW CT 4X16 | 2 | | | | |
| 124 | | 457664-5 | PROTECTOR | 1 | | | | |
| 125 | | 265753-0 | THUMB SCREW M5X24 | 1 | | | | |
| 126 | | 267066-5 | FLAT WASHER 5 | 1 | | | | |
| 127 | | 424193-3 | ROLLER | 2 | | | | |
| 128 | | 266385-6 | TAPPING SCREW 4X14 | 3 | | | | |
| 129 | | 458144-4 | SAFETY COVER B | 1 | | | | |
| 130 | | 266385-6 | TAPPING SCREW 4X14 | 1 | | | | |
| 131 | | 347213-5 | CENTER PLATE | 1 | | | | |
| 132 | | 231634-0 | TORSION SPRING 45 | 1 | | | | |
| 133 | | 424190-9 | CUSHION | 1 | | | | |
| 134 | | 347214-3 | CENTER COVER | 1 | | | | |
| 135 | | 265985-9 | HEX.SOCKET HEAD BOLT M6 | 1 | | | | |
| 136 | | 253932-2 | WAVE WASHER 10 | 1 | | | | |
| 137 | | 210168-6 | BALL BEARING 6805DDW | 1 | | | | |
| 138 | | 458437-9 | SAFETY COVER A | 1 | | | | |
| 139 | | 127274-9 | DUST NOZZLE ASSEMBLY | 1 | | | DG416 | |
| | D10 | | INC. 140-147 | | | | DG416 | |
| 139-1 | | 127274-9 | DUST NOZZLE ASSEMBLY | 1 | O | DG416 | | |
| | D10 | | INC. 141-147 | | | DG416 | | |
| 140 | | 265995-6 | TAPPING SCREW 4X18 | 3 | | | DG416 | |
| 141 | | 183H71-1 | HOSE CONNECTOR SET | 1 | | | DG416 | |
| 141-1 | | 413J67-3 | HOSE CONNECTOR | 1 | S | DG416 | | |
| 142 | | 245048-7 | HOSE 28-0.5 | 1 | | | | |
| 143 | | 457672-6 | SLEEVE | 1 | | | | |
| 144 | | 457673-4 | STOPPER | 1 | | | | |
| 145 | | 458939-5 | BUTTON A | 1 | | | | |
| 146 | | 232485-4 | COMPRESSION SPRING 5 | 1 | | | | |
| 147 | | 459249-3 | HOSE JOINT | 1 | | | | |
| 149 | | 266034-5 | TAPPING SCREW CT 4X16 | 3 | | | | |
| 150 | | 458149-4 | SLEEVE 17 | 2 | | | | |
| 152 | | 233542-1 | TORSION SPRING 40 | 1 | | | | |
| 153 | | 251267-5 | + PAN HEAD SCREW M6 | 1 | | | | |
| 154 | | 253948-7 | WAVE WASHER 8 | 1 | | | | |
| 155 | | 253835-0 | FLAT WASHER 8 | 1 | | | | |
| 156 | | 347221-6 | STOPPER ARM | 1 | | | | |
| 157 | | 347222-4 | FRONT ARM PLATE | 1 | | | | |
| 158 | | 262076-7 | FELT RING 30 | 2 | | | | |
| 159 | | 326994-4 | ROD 16 | 1 | | | | |
| 160 | | 271437-0 | KNOB 22 | 1 | | | | |
| 161 | | 961013-5 | STOP RING E-7 | 1 | | | | |
| 162 | | 266034-5 | TAPPING SCREW CT 4X16 | 4 | | | | |
| 163 | | 144912-8 | FRONT ARM COMPLETE | 1 | | | | |
| | C10 | 263005-3 | RUBBER PIN 6 | 2 | | | | |
| 164 | | 233151-6 | COMPRESSION SPRING 4 | 1 | | | | |
| 165 | | 256364-2 | PIN 4 | 1 | | | | |
| 166 | | 232384-0 | COMPRESSION SPRING 10 | 1 | | | | |
| 167 | | 326977-4 | STOPPER PIN | 1 | | | | |
| 168 | | 458145-2 | ARM COVER | 1 | | | | |
| 169 | | 144658-6 | HOLDER COMPLETE | 1 | | | | |
| | C10 | 812X89-8 | INDICATION LABEL | 1 | | | | |
| 170 | | 265008-3 | + FLAT HEAD SCREW M5 | 1 | | | | |
| 171 | | 222191-9 | PULLEY 17-19.3 | 1 | | | | |

A:DLS211Z(N)

Interchange
O : Yes
X : No
< : the new part can be substituted for the current.
> : the current part can be substituted for the new.
S : Interchangeable as a set.

| | |
|----|----------|
| TH | THAILAND |
|----|----------|

DLS211 / 305MM DC SLIDE CPD. MITER SAW

| Item | Sub | Parts No. | Parts Description | Qty | I/C | E/C No. | Close No. | Remark |
|------|-----|-----------|--------------------------------|-----|-----|---------|-----------|--------|
| 172 | | 210167-8 | BALL BEARING 6900LLB | 1 | | | | |
| 173 | | 267804-5 | WAVE WASHER 15 | 1 | | | | |
| 174 | | 326975-8 | SHAFT | 1 | | | | |
| 175 | | 210167-8 | BALL BEARING 6900LLB | 1 | | | | |
| 177 | | 913416-9 | SET SCREW M8X12 | 2 | | | | |
| 178 | | 416536-3 | WRENCH HOLDER | 1 | | | | |
| 179 | | 266026-4 | TAPPING SCREW BIND CT 4X12 | 1 | | | | |
| 180 | | 951107-4 | SPRING PIN 4-14 | 2 | | | | |
| 181 | | 273016-0 | GRIP 50 B | 1 | | | | |
| 182 | | 266440-4 | HEX SOCKET HEAD BOLT M5X40 | 1 | | | | |
| 183 | | 251545-3 | SHOULDER HEX. BOLT M6 | 1 | | | | |
| 184 | | 144930-6 | STOP LEVER COMPLETE | 1 | | | | |
| | C10 | 812X87-2 | INDICATION LABEL | 1 | | | | |
| 185 | | 253948-7 | WAVE WASHER 8 | 1 | | | | |
| 186 | | 253835-0 | FLAT WASHER 8 | 1 | | | | |
| 187 | | 251267-5 | + PAN HEAD SCREW M6 | 1 | | | | |
| 188 | | 327054-5 | PIN 9-418 | 1 | | | | |
| 189 | | 253194-2 | FLAT WASHER 5 | 1 | | | | |
| 190 | | 257436-6 | SLEEVE 5 | 1 | | | | |
| 191 | | 253165-9 | FLAT WASHER 8 | 1 | | | | |
| 192 | | 457666-1 | SLEEVE 20 | 1 | | | | |
| 193 | | 326977-4 | STOPPER PIN | 1 | | | | |
| 194 | | 222192-7 | PULLEY 17-87.8 | 1 | | | | |
| 195 | | 327053-7 | HEX. NUT M10-19 | 1 | | | | |
| 196 | | 225102-3 | SYNCHRO BELT 15-810 | 1 | | | | |
| 197 | | 232384-0 | COMPRESSION SPRING 10 | 1 | | | | |
| 198 | | 253388-9 | FLAT WASHER 10 | 1 | | | | |
| 199 | | 252244-0 | HEX.LOCK NUT M10-17 | 1 | | | | |
| 200 | | 253024-7 | FLAT WASHER 10 | 1 | | | | |
| 201 | | 961057-5 | RETAINING RING S-17 | 1 | | | | |
| 202 | | 216413-7 | THRUST NEEDLE CAGE 1024 | 1 | | | | |
| 203 | | 253024-7 | FLAT WASHER 10 | 1 | | | | |
| 204 | | 216413-7 | THRUST NEEDLE CAGE 1024 | 1 | | | | |
| 205 | | 961013-5 | STOP RING E-7 | 1 | | | | |
| 206 | | 271437-0 | KNOB 22 | 1 | | | | |
| 207 | | 253024-7 | FLAT WASHER 10 | 1 | | | | |
| 208 | | 144911-0 | ARM COMPLETE | 1 | | | | |
| | C10 | 812X88-0 | INDICATION LABEL | 1 | | | | |
| 209 | | 251547-9 | HEX.SOCKET HEAD BOLT M8X25 | 1 | | | | |
| 210 | | 458151-7 | INDICATION PLATE R | 1 | | | | |
| 211 | | 266026-4 | TAPPING SCREW BIND CT 4X12 | 1 | | | | |
| 212 | | 266034-5 | TAPPING SCREW CT 4X16 | 4 | | | | |
| 213 | | 415208-7 | RELEASE BUTTON | 1 | | | | |
| 214 | | 233031-6 | COMPRESSION SPRING 12 | 1 | | | | |
| 215 | | 457654-8 | DUST GUIDE HOLDER | 1 | | | | |
| 216 | | 458150-9 | INDICATION PLATE L | 1 | | | | |
| 217 | | 266026-4 | TAPPING SCREW BIND CT 4X12 | 1 | | | | |
| 218 | | 253389-7 | WASHER 94 | 1 | | | | |
| 219 | | 422229-2 | DUST GUIDE | 1 | | | | |
| 220 | | 319593-9 | STOPPER | 1 | | | | |
| 221 | | 231646-3 | TORSION SPRING 14 | 1 | | | | |
| 222 | | 253744-3 | FLAT WASHER 12 | 1 | | | | |
| 223 | | 961052-5 | RETAINING RING (EXT) S-12 | 1 | | | | |
| 224 | | 266026-4 | TAPPING SCREW BIND CT 4X12 | 2 | | | | |
| 225 | | 457668-7 | HOLDER | 2 | | | | |
| 226 | | 144925-9 | UPPER FENCE R COMPLETE | 1 | | | | |
| | C10 | 810503-4 | CAUTION LABEL | 1 | | | | |
| 227 | | 144922-5 | UPPER FENCE L COMPLETE | 1 | | | | |
| | C10 | 810503-4 | CAUTION LABEL | 1 | | | | |
| 228 | | 922458-2 | H.S.H.BOLT M8X35 WITH WR | 4 | | | | |
| 229 | | 251887-5 | SCREW M6X10 | 2 | | | | |
| 230 | | 251561-5 | H.SOCKET HEAD SET SCREW M10X12 | 2 | | | | |
| 231 | | 319565-4 | GUIDE FENCE | 1 | | | | |
| 232 | | 266026-4 | TAPPING SCREW BIND CT 4X12 | 6 | | | | |
| 233 | | 451201-7 | KERF BOARD | 2 | | | | |

A:DLS211Z(N)

Interchange
 O : Yes
 X : No
 < : the new part can be substituted for the current.
 > : the current part can be substituted for the new.
 S : Interchangeable as a set.

| | |
|-----------|-----------------|
| TH | THAILAND |
|-----------|-----------------|

DLS211 / 305MM DC SLIDE CPD. MITER SAW

| Item | Sub | Parts No. | Parts Description | Qty | I/C | E/C No. | Close No. | Remark |
|-------|-----|-----------|-------------------------------|-----|-----|---------|-----------|--------|
| 235 | | 265442-7 | HEX. BOLT M8X40 | 1 | | | | |
| 236 | | 253852-0 | FLAT WASHER 8 | 2 | | | | |
| 237 | | 216413-7 | THRUST NEEDLE CAGE 1024 | 1 | | | | |
| 238 | | 266385-6 | TAPPING SCREW 4X14 | 2 | | | | |
| 239 | | 458147-8 | BEVEL SCALE PLATE | 1 | | | | |
| 240 | | 251547-9 | HEX.SOCKET HEAD BOLT M8X25 | 1 | | | | |
| 241 | | 251547-9 | HEX.SOCKET HEAD BOLT M8X25 | 1 | | | | |
| 243 | | 813L22-1 | CAUTION LABEL | 2 | | | | |
| 244 | | 266026-4 | TAPPING SCREW BIND CT 4X12 | 2 | | | | |
| 245 | | 457702-3 | INDICATION PLATE | 2 | | | | |
| 246 | | 326970-8 | LOCK PIN 8 | 1 | | | | |
| 247 | | 234122-6 | COMPRESSION SPRING 6 | 1 | | | | |
| 249 | | 457657-2 | LEVER 25 | 1 | | | | |
| 250 | | 253804-1 | FLAT WASHER 6 | 1 | | | | |
| 251 | | 961018-5 | STOP RING E-5 | 2 | | | | |
| 252 | | 144928-3 | TURN BASE COMPLETE | 1 | | | | |
| | D10 | | INC. 243,253 | | | | | |
| 253 | | 812X85-6 | CAUTION LABEL | 1 | | | | |
| 254 | | 326973-2 | ROD 12 | 1 | | | | |
| 255 | | 286039-9 | CAP | 2 | | | | |
| 256 | | 326976-6 | CENTER SHAFT | 1 | | | | |
| 257 | | 911113-1 | PAN HEAD SCREW M4X10 WITH WR | 2 | | | | |
| 258 | | 231325-3 | COMPRESSION SPRING 6 | 1 | | | | |
| 259 | | 310803-7 | TURN STOPPER | 1 | | | | |
| 260 | | 347217-7 | LEVER PLATE | 1 | | | | |
| 261 | | 256186-0 | PIN 5 | 1 | | | | |
| 262 | | 911231-5 | PAN HEAD SCREW M5X20 | 2 | | | | |
| 263 | | 347219-3 | STOPPER HOLDER | 1 | | | | |
| 264 | | 327052-9 | LOCK ROD | 1 | | | | |
| 265 | | 457656-4 | LOCK LEVER | 1 | | | | |
| 266 | | 327051-1 | LOCK PIN 6 | 1 | | | | |
| 267 | | 256158-5 | PIN 3 | 1 | | | | |
| 268 | | 231325-3 | COMPRESSION SPRING 6 | 1 | | | | |
| 269 | | 347237-1 | CAM PLATE | 1 | | | | |
| 270 | | 319592-1 | PIN HOLDER | 1 | | | | |
| 271 | | 922231-0 | HEX. SOCKET HEAD BOLT M5X20 | 2 | | | | |
| 272 | | 347216-9 | LOCK PLATE | 1 | | | | |
| 274 | | 326972-4 | ROD 6 | 1 | | | | |
| 275 | | 961011-9 | STOP RING E-4 | 1 | | | | |
| 276 | | 257425-1 | RING 5 | 2 | | | | |
| 277 | | 253194-2 | FLAT WASHER 5 | 2 | | | | |
| 278 | | 922231-0 | HEX. SOCKET HEAD BOLT M5X20 | 2 | | | | |
| 279 | | 911113-1 | PAN HEAD SCREW M4X10 WITH WR | 1 | | | | |
| 280 | | 144656-0 | LEVER 25 COMPLETE | 1 | | | | |
| | C10 | | | | | | | |
| 281 | | 911008-8 | PAN HEAD SCREW M3X8 | 1 | | | | |
| 282 | | 345272-3 | LOCK LEVER PLATE | 1 | | | | |
| 283 | | 273015-2 | GRIP 50A | 1 | | | | |
| 284 | | 266026-4 | TAPPING SCREW BIND CT 4X12 | 2 | | | | |
| 285 | | 457655-6 | SLIDE PLATE | 1 | | | | |
| 286 | | 347412-9 | MITER SCALE PLATE | 1 | | | | |
| 287 | | 251546-1 | + PAN HEAD SCREW M5 | 4 | | | | |
| 288 | | 347218-5 | MITER LOCK PLATE | 1 | | | | |
| 289 | | 265786-5 | SCREW M5X16 | 2 | | | | |
| 290 | | 310891-4 | BASE | 1 | | | C9366 | |
| 290-1 | | 310891-4 | BASE | 1 | O | C9366 | | |
| 291 | | 421845-7 | FOOT | 4 | | | | |
| 292 | | 267195-4 | FLAT WASHER 4 | 4 | | | | |
| 293 | | 266026-4 | TAPPING SCREW BIND CT 4X12 | 4 | | | | |
| 294 | | 327315-3 | ROD 12 | 4 | | | | |
| 295 | | 961015-1 | STOP RING E-9 | 2 | | | | |
| 296 | | 266026-4 | TAPPING SCREW BIND CT 4X12 | 1 | | | | |
| 297 | | 266318-1 | H.S.SET SCREW(FLAT POINT)M4X6 | 1 | | | | |
| 299 | | 232249-6 | LEAF SPRING | 1 | | | | |
| 300 | | 266026-4 | TAPPING SCREW BIND CT 4X12 | 1 | | | | |

A:DLS211Z(N)

Interchange
O : Yes
X : No
< : the new part can be substituted for the current.
> : the current part can be substituted for the new.
S : Interchangeable as a set.

