



|    |          |
|----|----------|
| TH | THAILAND |
|----|----------|

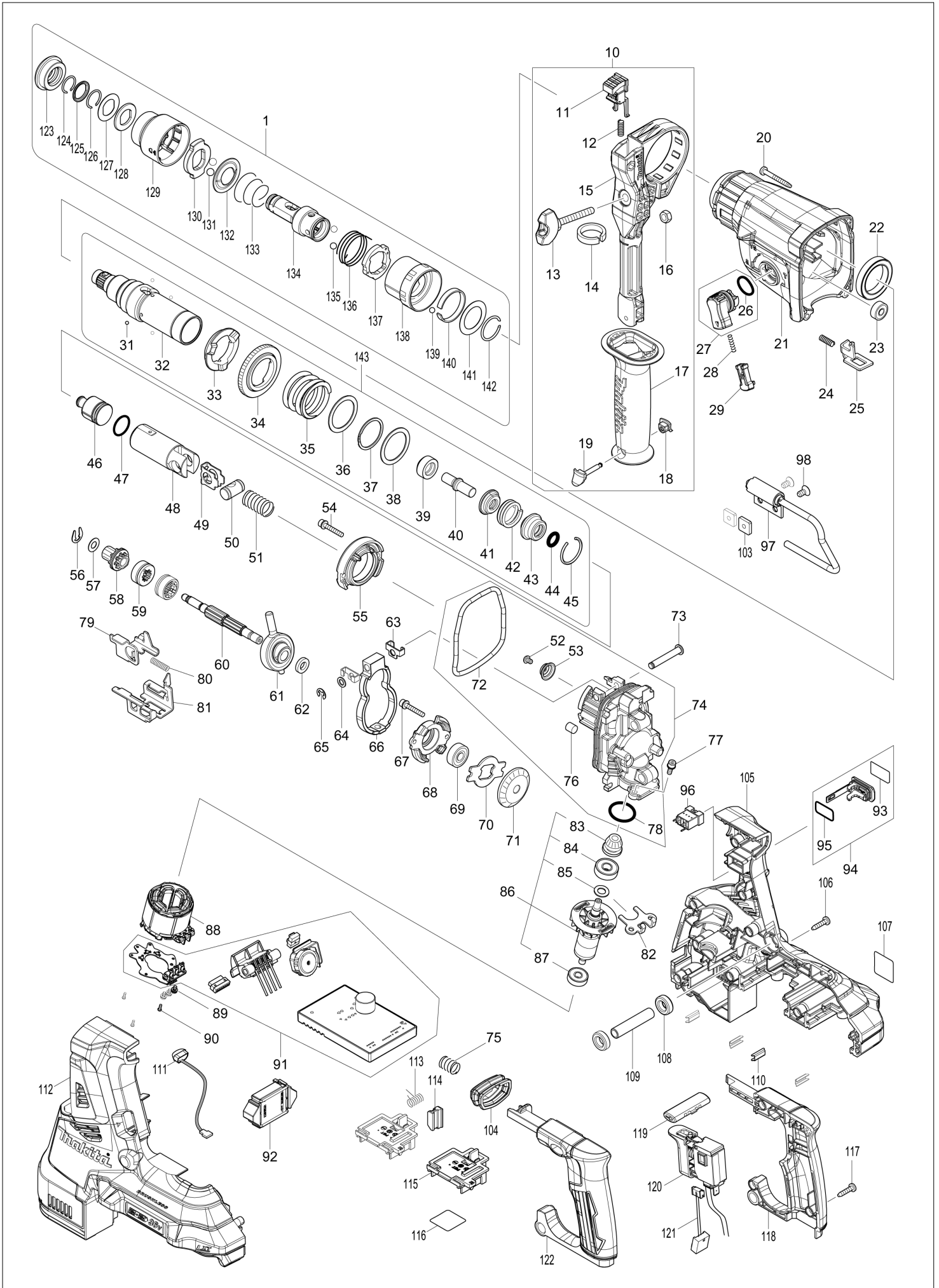
# Diagram / Parts List

**DHR283**

**28MM CRDLS COMBINATION HAMMER**



# (TH) DHR283 / 28MM CRDLS COMBINATION HAMMER



|    |          |
|----|----------|
| TH | THAILAND |
|----|----------|

### DHR283 / 28MM CRDLS COMBINATION HAMMER

| Item  | Sub | Parts No. | Parts Description           | Qty | I/C | E/C No. | Close No. | Remark |
|-------|-----|-----------|-----------------------------|-----|-----|---------|-----------|--------|
| 001   |     | 199134-5  | TOOL HOLDER SET             | 1   |     |         | C9768     |        |
|       | D10 |           | INC. 123-142                |     |     |         | C9768     |        |
| 001-1 |     | 199138-7  | TOOL HOLDER SET             | 1   | O   | C9768   |           |        |
|       | D10 |           | INC. 123-142                |     |     | C9768   |           |        |
| 010   |     | 126882-3  | GRIP ASSEMBLY               | 1   |     |         |           |        |
|       | D10 |           | INC. 11-19                  |     |     |         |           |        |
| 011   |     | 144959-2  | LOCK BUTTON COMPLETE        | 1   |     |         |           |        |
| 012   |     | 233360-7  | COMPRESSION SPRING 4        | 1   |     |         |           |        |
| 013   |     | 265625-9  | THUMB SCREW M6X50           | 1   |     |         |           |        |
| 014   |     | 422258-5  | SPONGE SHEET                | 1   |     |         |           |        |
| 015   |     | 458355-1  | SIDE HANDLE BASE            | 1   |     |         |           |        |
| 016   |     | 931302-2  | HEX. NUT M6                 | 1   |     |         |           |        |
| 017   |     | 458357-7  | GRIP 36                     | 1   |     |         |           |        |
| 018   |     | 422255-1  | CAP                         | 1   |     |         |           |        |
| 019   |     | 161838-9  | FIX PIN                     | 1   |     |         |           |        |
| 020   |     | 266351-3  | TAPPING SCREW 4X35          | 4   |     |         |           |        |
| 021   |     | 144965-7  | GEAR HOUSING COMPLETE       | 1   |     |         |           |        |
|       | C10 | 213345-9  | OIL SEAL 25                 | 1   |     |         |           |        |
|       | C20 | 331890-3  | CUP SLEEVE                  | 1   |     |         |           |        |
| 022   |     | 211294-4  | BALL BEARING 6806LLU        | 1   |     |         |           |        |
| 023   |     | 211012-0  | BALL BEARING 606ZZ          | 1   |     |         |           |        |
| 024   |     | 233360-7  | COMPRESSION SPRING 4        | 1   |     |         |           |        |
| 025   |     | 347228-2  | LOCK PLATE                  | 1   |     |         |           |        |
| 026   |     | 213278-8  | O RING 17                   | 1   |     |         |           |        |
| 027   |     | 135961-6  | CHANGE LEVER ASSY           | 1   |     |         |           |        |
|       | D10 |           | INC. 26                     |     |     |         |           |        |
| 028   |     | 234264-6  | COMPRESSION SPRING 3        | 1   |     |         |           |        |
| 029   |     | 457709-9  | LOCK BUTTON                 | 1   |     |         |           |        |
| 031   |     | 216019-1  | STEEL BALL 3                | 4   |     |         |           |        |
| 032   |     | 144966-5  | TOOL HOLDER GUIDE COMPLETE  | 1   |     |         |           |        |
|       | C10 | 213344-1  | OIL SEAL 9                  | 1   |     |         |           |        |
| 033   |     | 332139-4  | DRIVING FLANGE              | 1   |     |         |           |        |
| 034   |     | 227360-7  | SPUR GEAR 51                | 1   |     |         |           |        |
| 035   |     | 234148-8  | COMPRESSION SPRING 31       | 1   |     |         |           |        |
| 036   |     | 267153-0  | FLAT WASHER 30              | 1   |     |         |           |        |
| 037   |     | 257932-4  | SPIRO LOCK WASHER 30        | 1   |     |         |           |        |
| 038   |     | 267153-0  | FLAT WASHER 30              | 1   |     |         |           |        |
| 039   |     | 325783-4  | SLEEVE 9B                   | 1   |     |         |           |        |
| 040   |     | 325791-5  | IMPACT BOLT B               | 1   |     |         |           |        |
| 041   |     | 325792-3  | WASHER 10                   | 1   |     |         |           |        |
| 042   |     | 234149-6  | COMPRESSION SPRING 20       | 1   |     |         |           |        |
| 043   |     | 325793-1  | O-RING CASE B               | 1   |     |         |           |        |
| 044   |     | 213073-6  | O RING 9                    | 1   |     |         |           |        |
| 045   |     | 233979-2  | RING SPRING 28              | 1   |     |         |           |        |
| 046   |     | 325784-2  | STRIKER                     | 1   |     |         |           |        |
| 047   |     | 213258-4  | O RING 17.5                 | 1   |     |         |           |        |
| 048   |     | 327079-9  | PISTON CYLINDER             | 1   |     |         |           |        |
| 049   |     | 346036-8  | GUIDE PLATE                 | 1   |     |         |           |        |
| 050   |     | 324215-8  | PISTON JOINT                | 1   |     |         |           |        |
| 051   |     | 232449-8  | COMPRESSION SPRING 14       | 1   |     |         |           |        |
| 052   |     | 265627-5  | H.S.BUTTON HEAD BOLT M4X6   | 1   |     |         |           |        |
| 053   |     | 347344-0  | SPRING GUIDE                | 1   |     |         |           |        |
| 054   |     | 922148-7  | HEX. SOCKET HEAD BOLT M4X25 | 2   |     |         |           |        |
| 055   |     | 144960-7  | INNER SUPPORT COMPLETE      | 1   |     |         |           |        |
| 056   |     | 257336-0  | STOP RING EXT U-6           | 1   |     |         |           |        |
| 057   |     | 253186-1  | FLAT WASHER 7               | 1   |     |         |           |        |
| 058   |     | 226170-9  | SPUR GEAR 10                | 1   |     |         |           |        |
| 059   |     | 332125-5  | CLUTCH CAM                  | 2   |     |         |           |        |
| 060   |     | 327078-1  | CAM SHAFT                   | 1   |     |         |           |        |
| 061   |     | 219030-2  | SWASH BEARING 10            | 1   |     |         |           |        |
| 062   |     | 257321-3  | RING 8                      | 1   |     |         |           |        |
| 063   |     | 346538-4  | WEIGHT HOLDER GUIDE         | 2   |     |         |           |        |
| 064   |     | 253077-6  | FLAT WASHER 6               | 1   |     |         |           |        |
| 065   |     | 961018-5  | STOP RING E-5               | 1   |     |         |           |        |
| 066   |     | 310869-7  | COUNTER WEIGHT              | 1   |     |         |           |        |

A:DHR283ZU(N)  
 B:DHR283T2JU(H)  
 C:DHR283Z(N)  
 D:DHR283PT2J(H)

Interchange  
 O : Yes  
 X : No  
 < : the new part can be substituted for the current.  
 > : the current part can be substituted for the new.  
 S : Interchangeable as a set.

|    |          |
|----|----------|
| TH | THAILAND |
|----|----------|

### DHR283 / 28MM CRDLS COMBINATION HAMMER

| Item   | Sub | Parts No. | Parts Description             | Qty | I/C | E/C No. | Close No. | Remark |
|--------|-----|-----------|-------------------------------|-----|-----|---------|-----------|--------|
| 067    |     | 922148-7  | HEX. SOCKET HEAD BOLT M4X25   | 2   |     |         |           |        |
| 068    |     | 319674-9  | BEARING BOX                   | 1   |     |         |           |        |
| 069    |     | 211032-4  | BALL BEARING 608ZZ            | 1   |     |         |           |        |
| 070    |     | 347343-2  | BEARING RETAINER B            | 1   |     |         |           |        |
| 071    |     | 221599-4  | SPIRAL BEVEL GEAR 32          | 1   |     |         |           |        |
| 072    |     | 213850-6  | O-RING 74                     | 1   |     |         |           |        |
| 073    |     | 256536-9  | FLAT FILLISTER HD PIN 6       | 1   |     |         |           |        |
| 074    |     | 135962-4  | INNER HOUSING ASSY            | 1   |     |         |           |        |
|        | D10 |           | INC. 52,53,72,76,78           |     |     |         |           |        |
| 075    |     | 232436-7  | COMPRESSION SPRING 10         | 1   |     |         |           |        |
| 076    |     | 443153-6  | FELT                          | 1   |     |         |           |        |
| 077    |     | 922118-6  | HEX. SOCKET HEAD BOLT M4X12   | 2   |     |         |           |        |
| 078    |     | 213008-7  | O RING 22.4                   | 1   |     |         |           |        |
| 079    |     | 347230-5  | CHANGE PLATE B                | 1   |     |         |           |        |
| 080    |     | 234343-0  | COMPRESSION SPRING 5          | 1   |     |         |           |        |
| 081    |     | 347229-0  | CHANGE PLATE A                | 1   |     |         |           |        |
| 082    |     | 346536-8  | BEARING RETAINER A            | 1   |     |         |           |        |
| 083    |     | 144964-9  | SPIRAL BEVEL GEAR 11 COMPLETE | 1   |     |         |           |        |
| 084    |     | 210024-0  | BALL BEARING 608LLU           | 1   |     |         |           |        |
| 085    |     | 253835-0  | FLAT WASHER 8                 | 1   |     |         |           |        |
| 086    |     | 519513-5  | ROTOR ASSY                    | 1   |     |         |           |        |
|        | D10 |           | INC. 83-85,87                 |     |     |         |           |        |
| 087    |     | 210022-4  | BALL BEARING 626DDW           | 1   |     |         |           |        |
| 088    |     | 629340-3  | STATOR                        | 1   |     |         |           |        |
| 089    |     | 652069-6  | FLAT HEAD SCREW M3X6          | 3   |     |         |           |        |
| 090    |     | 266490-9  | TAPPING SCREW PT 2X6          | 3   |     |         |           |        |
| 091    |     | 620814-7  | CONTROLLER                    | 1   |     |         |           |        |
| 092    |     | 620816-3  | ACCELEROMETER CIRCUIT         | 1   |     |         | C4041     |        |
| 092-1  |     | 620816-3  | ACCELEROMETER CIRCUIT         | 1   | S   | C4041   |           |        |
| 093    |     | 813T75-8  | CAP LABEL                     | 1   |     |         | C3942     |        |
| 093-1  |     | 818H48-4  | CAP LABEL                     | 1   | <   | C3942   |           |        |
| 094A   |     | 183H92-3  | CAP SET                       | 1   |     |         | C2104     |        |
|        | D10 |           | INC. 93,95                    |     |     |         | C2104     |        |
| 094B   |     | 183H92-3  | CAP SET                       | 1   |     |         | C2104     |        |
|        | D10 |           | INC. 93,95                    |     |     |         | C2104     |        |
| 094C   |     | 183J85-2  | CAP SET                       | 1   |     |         | C3942     |        |
| 094D   |     | 183J85-2  | CAP SET                       | 1   |     |         | C3942     |        |
| 094-1A |     | 183J85-2  | CAP SET                       | 1   | O   | C2104   | C3942     |        |
|        | D10 |           | INC. 93,95                    |     |     | C2104   | C3942     |        |
| 094-1B |     | 183J85-2  | CAP SET                       | 1   | O   | C2104   | C3942     |        |
|        | D10 |           | INC. 93,95                    |     |     | C2104   | C3942     |        |
| 094-1C |     | 140G30-2  | CAP COMPLETE                  | 1   | <   | C3942   |           |        |
| 094-1D |     | 140G30-2  | CAP COMPLETE                  | 1   | <   | C3942   |           |        |
| 094-2A |     | 140G30-2  | CAP COMPLETE                  | 1   | <   | C3942   |           |        |
|        | D10 |           | INC. 93,95                    |     |     | C3942   |           |        |
| 094-2B |     | 140G30-2  | CAP COMPLETE                  | 1   | <   | C3942   |           |        |
|        | D10 |           | INC. 93,95                    |     |     | C3942   |           |        |
| 095A   |     | 213275-4  | O RING 18                     | 1   |     |         | C2104     |        |
| 095B   |     | 213275-4  | O RING 18                     | 1   |     |         | C2104     |        |
| 095C   |     | 213218-6  | O RING 16                     | 1   |     |         | DA223     |        |
| 095D   |     | 213218-6  | O RING 16                     | 1   |     |         | DA223     |        |
| 095-1A |     | 213218-6  | O RING 16                     | 1   | <   | C2104   | DA223     |        |
| 095-1B |     | 213218-6  | O RING 16                     | 1   | <   | C2104   | DA223     |        |
| 095-1C |     | 213A05-9  | O-RING16                      | 1   | O   | DA223   |           |        |
| 095-1D |     | 213A05-9  | O-RING16                      | 1   | O   | DA223   |           |        |
| 095-2A |     | 213A05-9  | O-RING16                      | 1   | O   | DA223   |           |        |
| 095-2B |     | 213A05-9  | O-RING16                      | 1   | O   | DA223   |           |        |
| 096    |     | 632L87-2  | CONNECTOR UNIT                | 1   |     |         |           |        |
| 097    |     | 135963-2  | HOOK ASSY                     | 1   |     |         |           |        |
| 098    |     | 912207-5  | COUNTERSUNK HEAD SCREW M5X10  | 2   |     |         |           |        |
| 103    |     | 264002-2  | SQUARE NUT M5                 | 2   |     |         |           |        |
| 104    |     | 422257-7  | BELLOWS                       | 1   |     |         |           |        |
| 105    |     | 183J30-7  | HOUSING SET                   | 1   |     |         | C4041     |        |
|        | C10 | 263005-3  | RUBBER PIN 6                  | 8   |     |         | C4041     |        |
|        | D10 |           | INC. 112                      |     |     |         | C4041     |        |

A:DHR283ZU(N)  
 B:DHR283TJU(H)  
 C:DHR283Z(N)  
 D:DHR283PT2J(H)

Interchange  
 O : Yes  
 X : No  
 < : the new part can be substituted for the current.  
 > : the current part can be substituted for the new.  
 S : Interchangeable as a set.

|    |          |
|----|----------|
| TH | THAILAND |
|----|----------|

### DHR283 / 28MM CRDLS COMBINATION HAMMER

| Item   | Sub | Parts No. | Parts Description            | Qty | I/C | E/C No. | Close No. | Remark |
|--------|-----|-----------|------------------------------|-----|-----|---------|-----------|--------|
| 105-1  |     | 183K53-1  | HOUSING SET                  | 1   | <   | C4041   |           |        |
|        | C10 | 263005-3  | RUBBER PIN 6                 | 8   |     | C4041   |           |        |
|        | D10 |           | INC. 112                     |     |     | C4041   |           |        |
| 106    |     | 266326-2  | TAPPING SCREW 4X18           | 9   |     |         |           |        |
| 107    |     | 854J52-1  | DHR283 NAME PLATE            | 1   |     |         |           |        |
| 108    |     | 422256-9  | RUBBER RING 10               | 2   |     |         |           |        |
| 109    |     | 257438-2  | SLEEVE 10                    | 1   |     |         |           |        |
| 110    |     | 346783-1  | PLATE                        | 4   |     |         |           |        |
| 111    |     | 620549-0  | LED CIRCUIT                  | 1   |     |         |           |        |
| 112    |     | 183J30-7  | HOUSING SET                  | 1   |     |         | C4041     |        |
|        | C10 | 263005-3  | RUBBER PIN 6                 | 8   |     |         | C4041     |        |
|        | D10 |           | INC. 105                     |     |     |         | C4041     |        |
| 112-1  |     | 183K53-1  | HOUSING SET                  | 1   | <   | C4041   |           |        |
|        | C10 | 263005-3  | RUBBER PIN 6                 | 8   |     | C4041   |           |        |
|        | D10 |           | INC. 105                     |     |     | C4041   |           |        |
| 113    |     | 233598-4  | TORSION SPRING 6             | 1   |     |         |           |        |
| 114    |     | 313226-8  | OPENER                       | 1   |     |         |           |        |
| 115    |     | 644809-6  | TERMINAL                     | 2   |     |         |           |        |
| 116    |     | 854J58-9  | DHR283 SERIAL NO. LABEL      | 1   |     |         |           |        |
| 117    |     | 266326-2  | TAPPING SCREW 4X18           | 4   |     |         |           |        |
| 118    |     | 183J29-2  | HANDLE SET                   | 1   |     |         |           |        |
|        | D10 |           | INC. 122                     |     |     |         |           |        |
| 119    |     | 453124-5  | F/R CHANGE LEVER             | 1   |     |         |           |        |
| 120    |     | 651366-7  | SWITCH C3JW-6B-24            | 1   |     |         |           |        |
| 121    |     | 632L95-3  | LEAD UNIT                    | 1   |     |         |           |        |
| 122    |     | 183J29-2  | HANDLE SET                   | 1   |     |         |           |        |
|        | D10 |           | INC. 118                     |     |     |         |           |        |
| 123    |     | 286288-8  | CAP 35                       | 1   |     |         |           |        |
| 124    |     | 233989-9  | RING SPRING 14               | 1   |     |         |           |        |
| 125    |     | 346221-3  | WASHER 16                    | 1   |     |         |           |        |
| 126    |     | 233992-0  | RING SPRING 15               | 1   |     |         |           |        |
| 127    |     | 267437-6  | FLAT WASHER 17               | 1   |     |         |           |        |
| 128    |     | 424364-2  | RUBBER WASHER 16             | 1   |     |         |           |        |
| 129    |     | 458358-5  | CHUCK COVER                  | 1   |     |         |           |        |
| 130    |     | 327081-2  | STOPPER                      | 1   |     |         |           |        |
| 131    |     | 216022-2  | STEEL BALL 7.0               | 2   |     |         |           |        |
| 132    |     | 346177-0  | GUIDE WASHER                 | 1   |     |         |           |        |
| 133    |     | 233916-6  | CONICAL COMP. SPRING 21-29   | 1   |     |         |           |        |
| 134    |     | 327080-4  | TOOL HOLDER                  | 1   |     |         |           |        |
| 135    |     | 216013-3  | STEEL BALL 6                 | 2   |     |         |           |        |
| 136    |     | 231669-1  | TORSION SPRING 31            | 1   |     |         |           |        |
| 137    |     | 345334-7  | CHANGE RING                  | 1   |     |         |           |        |
| 138    |     | 418218-3  | CHANGE COVER                 | 1   |     |         |           |        |
| 139    |     | 216018-3  | STEEL BALL 5.0               | 1   |     |         |           |        |
| 140    |     | 345335-5  | LEAF SPRING                  | 1   |     |         |           |        |
| 141    |     | 267270-6  | FLAT WASHER 24               | 1   |     |         |           |        |
| 142    |     | 233924-7  | RING SPRING 21               | 1   |     |         |           |        |
| 143    |     | 135965-8  | TOOL HOLDER ASSY             | 1   |     |         |           |        |
|        | D10 |           | INC. 31-45                   |     |     |         |           |        |
| A01    |     | 199135-3  | DRILL CHUCK SET              | 1   |     |         | C9768     |        |
| A01-1  |     | 199139-5  | DRILL CHUCK SET              | 1   | O   | C9768   |           |        |
| A02    |     | 194683-7  | GREASE VESSEL SET            | 1   |     |         |           |        |
| A03A   |     | 198901-5  | WIRELESS UNIT SET            | 1   |     | Y07670  | C3819     |        |
| A03B   |     | 198901-5  | WIRELESS UNIT SET            | 1   |     | Y07670  | C3819     |        |
| A03-1A |     | 199393-1  | WIRELESS UNIT SET            | 1   | <   | C3819   | D4357     |        |
| A03-1B |     | 199393-1  | WIRELESS UNIT SET            | 1   | <   | C3819   | D4357     |        |
| A03-2A |     | 199393-1  | WIRELESS UNIT SET            | 1   | <   | D4357   | DB384     |        |
| A03-2B |     | 199393-1  | WIRELESS UNIT SET            | 1   | <   | D4357   | DB384     |        |
| A03-3A |     | 199393-1  | WIRELESS UNIT SET            | 1   | <   | DB384   |           |        |
| A03-3B |     | 199393-1  | WIRELESS UNIT SET            | 1   | <   | DB384   |           |        |
| A04    |     | 331886-4  | DEPTH GAUGE                  | 1   |     |         |           |        |
| A05    |     | 443122-7  | CLOTH                        | 1   |     |         |           |        |
| A06B   |     | 195179-1  | DUSTCUP SET                  | 1   |     |         |           |        |
| A06D   |     | 195179-1  | DUSTCUP SET                  | 1   |     |         |           |        |
| A09B   |     | ***DC18RD | DC18RD TWO PORT FAST CHARGER | 1   |     |         |           |        |

A:DHR283ZU(N)  
 B:DHR283TJU(H)  
 C:DHR283Z(N)  
 D:DHR283PT2J(H)

Interchange  
 O : Yes  
 X : No  
 < : the new part can be substituted for the current.  
 > : the current part can be substituted for the new.  
 S : Interchangeable as a set.

