



Cordless Oil-Impulse Driver DTS141 / DTS131



Phosphorescent bumper

LED Job light with pre-glow and afterglow functions

- On pulling switch trigger, the light automatically turns on before motor starts turning.
- Keeps on illuminating about 12-13 sec. after trigger release.
- With a manual on-off switch for the activation system



Variable speed control by trigger

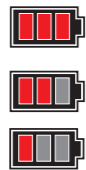
Ergonomically designed handle with soft grip

provides comfortable grip and more control while minimizing hand fatigue and pain.

Battery fuel gauge

The power remaining in the battery can be indicated in 3 stages simply by pushing a button:

- 3 lights on : more than 50% of full battery capacity
- 2 lights on : 20% to 50% of full battery capacity
- 1 light on : less than 20% of full battery capacity



Belt clip

Battery Protector S (Option)

designed to protect the battery cartridge from dust and dripping water in outdoor applications or harsh environments.



for 18V DTS141:
Part No. 195798-3



for 14.4V DTS131:
Part No. 195797-5

Photo: DTS141
Tool does not come with bit.

Battery

- DTS141**
- BL1850: 5.0Ah
 - BL1840: 4.0Ah
 - BL1830: 3.0Ah
 - BL1820: 2.0Ah
 - BL1815N: 1.5Ah
 - BL1815: 1.3Ah

- DTS131**
- BL1440: 4.0Ah
 - BL1430: 3.0Ah
 - BL1415N: 1.5Ah
 - BL1415: 1.3Ah

Charger

DC18RC

Two Port Multi Fast Charger DC18RD

Charging time (3.0Ah)
22minutes

DC18SD

Charging time (3.0Ah) 60minutes

Four Port Multi Charger DC18SF

Charging time (3.0Ah)

1 to 2 batteries : 60minutes

3 to 4 batteries : 120minutes

DC18SE (Automotive)

Charging time (3.0Ah) 60minutes

Low Noise

75 dB (DTS131)

Max. fastening torque

40 N·m

Suitable for noise sensitive job site

Cordless Oil-Impulse Driver

DTS141 / DTS131

- Variable Speed
- Brake
- Reversing
- Built-in Job Light
- Carrying Case

Standard Equipment :
Fast charger, Battery cartridge
Tool does not come with bit.

	DTS141	DTS131
Capacity	Machine screw : M4 - M8 (5/32" - 5/16") Standard bolt : M5 - M8 (3/16" - 5/16") Coarse thread (in length): 22 - 125mm (7/8" - 4-7/8") Hard / Medium / Soft : 0-2,700 / 0-2,200 / 0-1,400	M4 - M8 (5/32" - 5/16") M5 - M8 (3/16" - 5/16") 22 - 125mm (7/8" - 4-7/8") 0-2,500 / 0-2,200 / 0-1,400
Impacts per minute (ipm)	0-3,200 / 0-2,000 / 0-1,200	0-3,000 / 0-2,000 / 0-1,200
No load speed (rpm)	40N·m (355in.lbs)	40N·m (355in.lbs)
Max. fastening torque	40N·m (355in.lbs)	40N·m (355in.lbs)
Dimensions (L x W x H)	BL1850, BL1840, BL1830: 136x79x240mm (5-3/8"x3-1/8"x9-1/2") BL1820, BL1815/N: 136x79x223mm (5-3/8"x3-1/8"x8-3/4")	BL1440, BL430/A: 136x79x240mm (5-3/8"x3-1/8"x9-1/2") BL1415/N: 136x79x223mm (5-3/8"x3-1/8"x8-3/4")
Net weight	BL1850, BL1840, BL1830: 1.5kg (3.2lbs) BL1820, BL1815/N: 1.2kg (2.7lbs)	BL1440, BL430/A: 1.4kg (3.0lbs) BL1415/N: 1.2kg (2.6lbs)

weight according to EPTA-Procedure 01/2003

Items of standard equipment and specifications may vary by country or area.

Makita Corporation

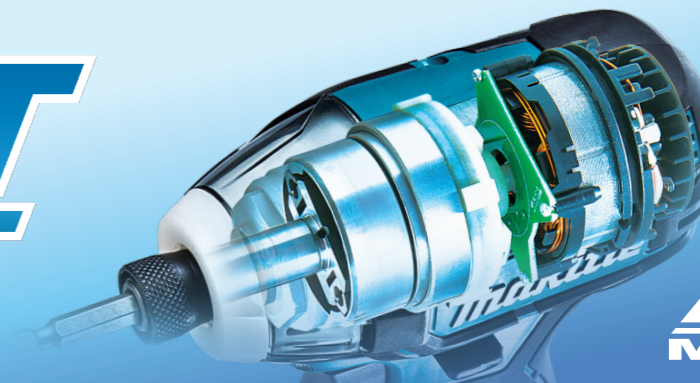
3-11-8 Sumiyoshi-cho, Anjo, Aichi, 446-8502 Japan

PRINTED IN JAPAN BE-BA



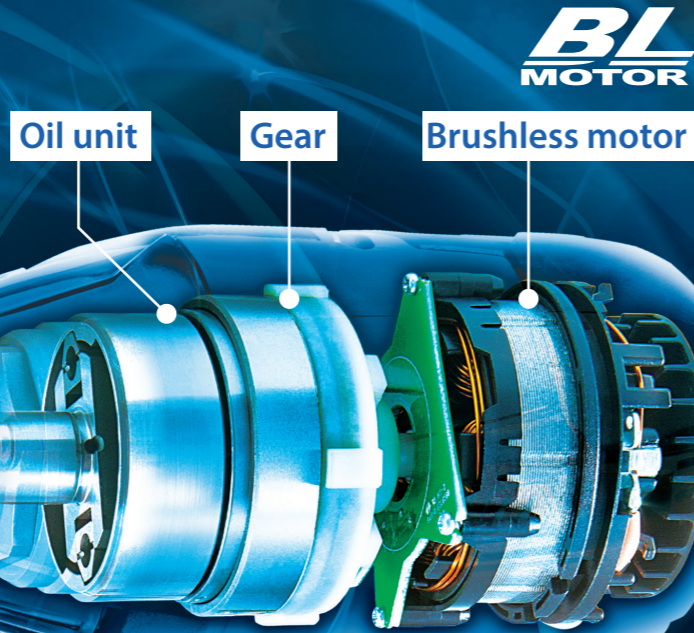
Photo: DTS141
Tool does not come with bit.

SOFT IMPACT



Using newly-developed Oil Unit as an impact mechanism instead of anvil and hammer, operation noise has been greatly reduced compared with cordless impact driver.

**SOFT
IMPACT**

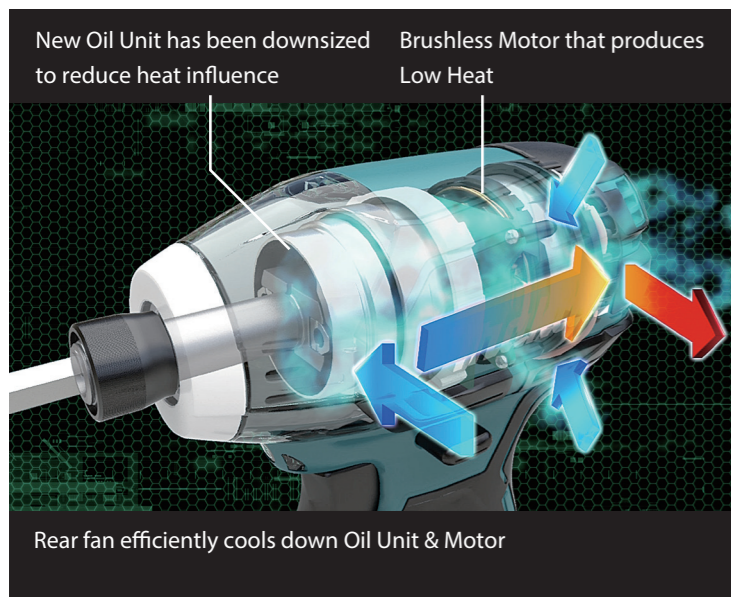


Low Noise

75 (DTS131) **dB**
(DTS141 : 77dB)

Enables "Consecutive Fastening" at high speed.

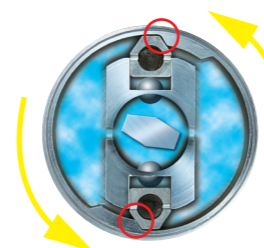
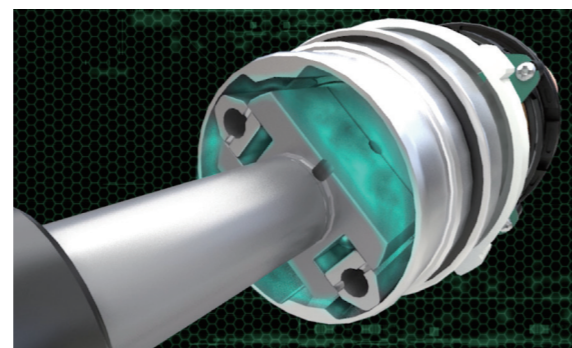
Drastically reduces influence from Heat



Rear fan efficiently cools down Oil Unit & Motor

Smooth Fastening!

Small Reaction that prevents hands from swinging



2 impacts per 1 RPM prevents a driver bit from easily coming out

World's Shortest & Lightest among Cordless Oil-pulse Drivers

*As of August 2014



**BL
MOTOR**

Photo: DTS141

"T" mode:
Tightening mode for self-drilling screw

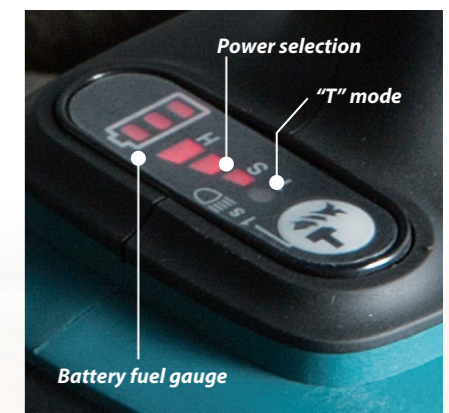
T-mode is a special mode optimum for fast tightening of self drilling screws without damaging the screw and the workpiece.

	DTS141	DTS131
Impacts per minute (ipm)	Hard: 0-2,700	0-2,400
	Medium: 0-2,200	0-2,200
	Soft: 0-1,400	0-1,400
No load speed (rpm)	Hard: 0-2,700	0-2,600
	Medium: 0-2,100	0-2,000
	Soft: 0-1,000	0-900



Electronic 3 stage impact power selection

In order to reduce fault tightening, hard/medium/soft impact power can be selected to the material of workpiece or screw type simply by pushing a button.

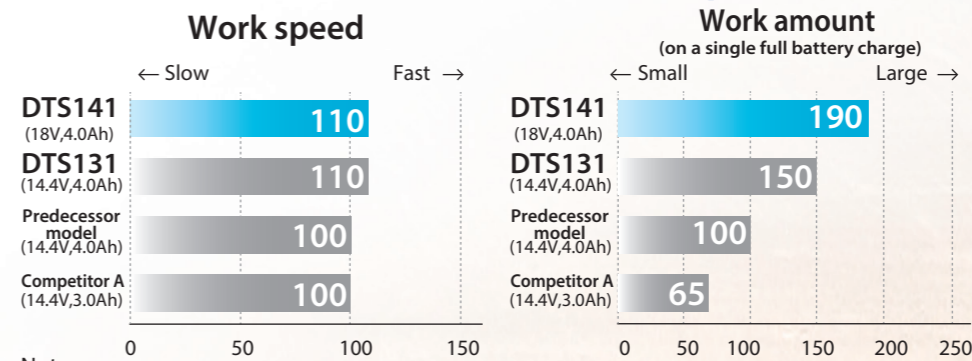


Performance Comparison

Test conditions:

Numbers in the charts below are relative values when the capacities of The predecessor model is indexed at 100.

Drove 90mm coarse thread screw into melapi



Note:

1) The test results depend to a great extent on the hardness of the material, etc.

XPT
EXTREME PROTECTION TECHNOLOGY

Dust and drip-proof performance is enhanced for use in outdoor applications or harsh environments.