



TH	THAILAND
----	----------

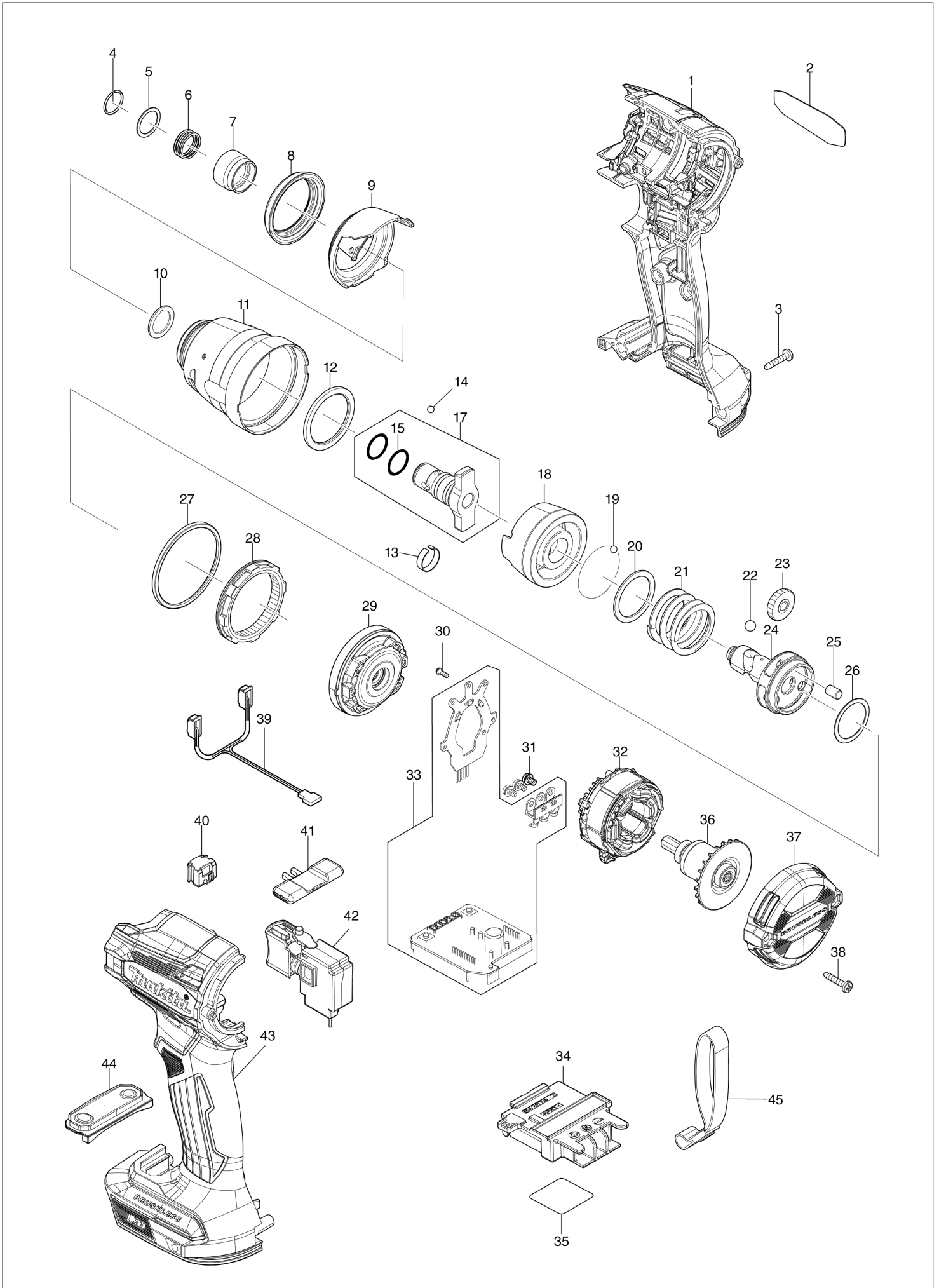
# Diagram / Parts List

**DTD172**

**CORDLESS IMPACT DRIVER**



(TH) DTD172 / CORDLESS IMPACT DRIVER



TH	THAILAND
----	----------

### DTD172 / CORDLESS IMPACT DRIVER

Item	Sub	Parts No.	Parts Description	Qty	I/C	E/C No.	Close No.	Remark
001A		183S40-8	HOUSING SET	1				
001B		183S40-8	HOUSING SET	1				
001C		183S40-8	HOUSING SET	1				
001D		183S42-4	HOUSING SET	1				
001E		183S41-6	HOUSING SET	1				
	C10	263005-3	RUBBER PIN 6	2				
	C20	252126-6	HEX. LOCK NUT M4-7	2				
	D10		INC. 43					
002		8111E5-4	DTD172 NAME PLATE	1				
003		266429-2	TAPPING SCREW 3X16	7				
004		231952-6	RING SPRING 12	1				
005		267101-9	FLAT WASHER 14	1				
006		232592-3	COMPRESSION SPRING 14	1				
007A		327883-6	BIT SLEEVE	1			DG954	
007B		327883-6	BIT SLEEVE	1			DG954	
007C		327883-6	BIT SLEEVE	1			DG954	
007D		327883-6	BIT SLEEVE	1			DG954	
007-1A		327783-0	BIT SLEEVE	1	S	DG954		
007-1B		327783-0	BIT SLEEVE	1	S	DG954		
007-1C		327783-0	BIT SLEEVE	1	S	DG954		
007-1D		327783-0	BIT SLEEVE	1	S	DG954		
007-1E		327783-0	BIT SLEEVE	1				
008		422689-8	BUMPER	1				
009		413493-6	HAMMER CASE COVER	1				
010A		253496-6	FLAT WASHER 13	1	S	DG954		
010B		253496-6	FLAT WASHER 13	1	S	DG954		
010C		253496-6	FLAT WASHER 13	1	S	DG954		
010D		253496-6	FLAT WASHER 13	1	S	DG954		
010E		253496-6	FLAT WASHER 13	1				
011		141A40-6	HAMMER CASE COMPLETE	1				
012		261168-9	NYLON WASHER 29	1				
013A		232692-9	LEAF SPRING	1	S	DG954		
013B		232692-9	LEAF SPRING	1	S	DG954		
013C		232692-9	LEAF SPRING	1	S	DG954		
013D		232692-9	LEAF SPRING	1	S	DG954		
013E		232692-9	LEAF SPRING	1				
014		216040-0	STEEL BALL 3.5	2				
015		213166-9	O RING 12.5	2				
017A		136547-9	ANVILN ASS'Y	1			DG954	
	D10		INC. 15				DG954	
017B		136547-9	ANVILN ASS'Y	1			DG954	
	D10		INC. 15				DG954	
017C		136547-9	ANVILN ASS'Y	1			DG954	
	D10		INC. 15				DG954	
017D		136547-9	ANVILN ASS'Y	1			DG954	
	D10		INC. 15				DG954	
017-1A		136389-1	ANVIL N ASSY	1	S	DG954		
	D10		INC. 15			DG954		
017-1B		136389-1	ANVIL N ASSY	1	S	DG954		
	D10		INC. 15			DG954		
017-1C		136389-1	ANVIL N ASSY	1	S	DG954		
	D10		INC. 15			DG954		
017-1D		136389-1	ANVIL N ASSY	1	S	DG954		
	D10		INC. 15			DG954		
017-1E		136389-1	ANVIL N ASSY	1				
	D10		INC. 15					
018		327785-6	HAMMER	1				
019		216040-0	STEEL BALL 3.5	24				
020		267175-0	FLAT WASHER 24	1				
021		232459-5	COMPRESSION SPRING 24B	1				
022		216011-7	STEEL BALL 5.6	2				
023		227350-0	SPUR GEAR 22	3				
024		327784-8	SPINDLE	1				
025		268311-1	PIN 5	3				
026		267283-7	FLAT WASHER 21	1				

A:DTD172Z(N)  
 B:DTD172RTJ(H)  
 C:DTD172RFJ(H)  
 D:DTD172RFAR(H)  
 E:DTD172ZB(N)

Interchange  
 O : Yes  
 X : No  
 < : the new part can be substituted for the current.  
 > : the current part can be substituted for the new.  
 S : Interchangeable as a set.

<b>TH</b>	<b>THAILAND</b>
-----------	-----------------

**DTD172 / CORDLESS IMPACT DRIVER**

Item	Sub	Parts No.	Parts Description	Qty	I/C	E/C No.	Close No.	Remark
027		422688-0	SEAL	1				
028		227882-7	INTERNAL GEAR 51	1				
029		141A41-4	BEARING BOX COMPLETE	1				
030		266490-9	TAPPING SCREW PT 2X6	3				
031		652069-6	FLAT HEAD SCREW M3X6	3				
032		629217-2	STATOR	1				
033		620E81-4	CONTROLLER	1				
034		643874-2	TERMINAL	1				
035		8111F2-7	DTD172 SERIAL NO. LABEL	1				
036		619678-4	ROTOR	1				
037A		413494-4	REAR COVER	1				
037B		413494-4	REAR COVER	1				
037C		413494-4	REAR COVER	1				
037D		413631-0	REAR COVER	1				
037E		413630-2	REAR COVER	1				
038		266429-2	TAPPING SCREW 3X16	2				
039		620F12-9	LED CIRCUIT	1				
040		632L84-8	SWITCH UNIT	1				
041		455053-8	F/R CHANGE LEVER	1				
042		651442-7	SWITCH C3JR-1A-1	1				
043A		183S40-8	HOUSING SET	1				
043B		183S40-8	HOUSING SET	1				
043C		183S40-8	HOUSING SET	1				
043D		183S42-4	HOUSING SET	1				
043E		183S41-6	HOUSING SET	1				
	C10	263005-3	RUBBER PIN 6	2				
	C20	252126-6	HEX. LOCK NUT M4-7	2				
	D10		INC. 1					
044		141F68-4	SWITCH PLATE COMPLETE	1				
A01		266622-8	+ TRUSS HEAD SCREW M4X12	1				
A02		346317-0	HOOK	1				
A04B		821550-0	CONNECTOR PLASTIC CASE (TYPE2)	1				
	C10	453974-8	LATCH	4				
A04C		821550-0	CONNECTOR PLASTIC CASE (TYPE2)	1				
	C10	453974-8	LATCH	4				
A04D		821857-4	PLASTIC CARRYING CASE	1				
	C10	324679-6	SHAFT	1				
	C20	413728-5	LATCH	1				
	C30	458362-4	LATCH	2				
	C40	458363-2	HANDLE	1				
A05B		837670-0	INNER TRAY	1				
A05C		837670-0	INNER TRAY	1				
A06B		8042M5-3	DTD172RTJ PLASTIC CASE LABEL	2				
A06C		8042N2-6	DTD172RFJ PLASTIC CASE LABEL	2				
A06D		8060A2-9	DTD172RFAR PLASTIC CASE LABEL	2				
A07B		8042M4-5	DTD172RTJ INDICATION LABEL	1				
A07C		8042N1-8	DTD172RFJ INDICATION LABEL	1				
A08B		450128-8	BATTERY COVER	1				
A08C		450128-8	BATTERY COVER	1				
A09B		***DC18RC	DC18RC FAST CHARGER	1				
	D10		COMPO-PARTS					
A09C		***DC18RC	DC18RC FAST CHARGER	1				
	D10		COMPO-PARTS					
A09D		***DC18RC	DC18RC FAST CHARGER	1				
	D10		COMPO-PARTS					
A10B		199282-0	BATTERY BL1850B SET	2				
A10C		199283-8	BATTERY BL1830B SET	2				
A10D		199283-8	BATTERY BL1830B SET	1				

A:DTD172Z(N)  
 B:DTD172RTJ(H)  
 C:DTD172RFJ(H)  
 D:DTD172RFAR(H)  
 E:DTD172ZB(N)

Interchange  
 O : Yes  
 X : No  
 < : the new part can be substituted for the current.  
 > : the current part can be substituted for the new.  
 S : Interchangeable as a set.