



TH	THAILAND
----	----------

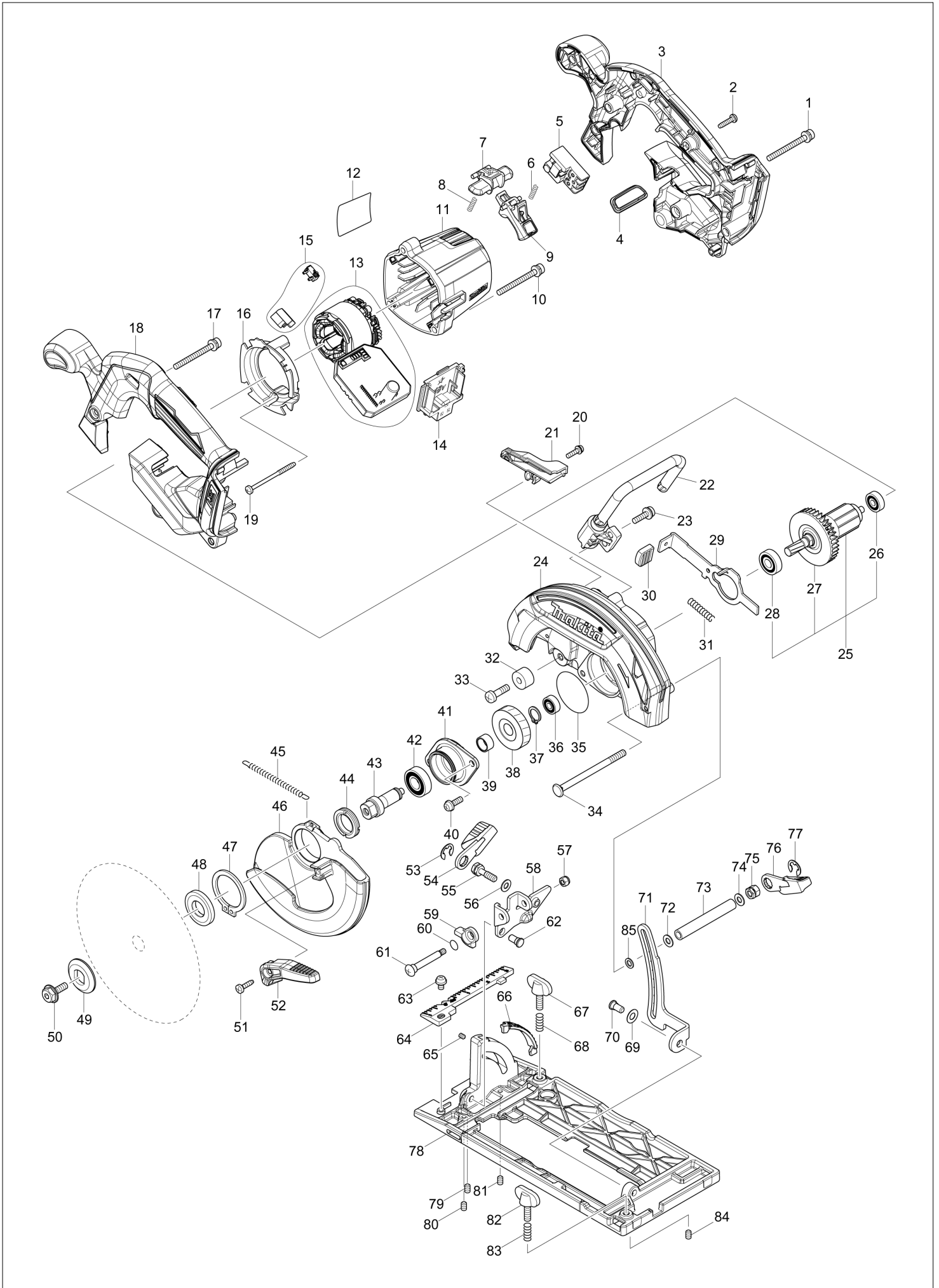
Diagram / Parts List

DHS680

165MM CORDLESS CIRCULAR SAW



(TH) DHS680 / 165MM CORDLESS CIRCULAR SAW



TH	THAILAND
-----------	-----------------

DHS680 / 165MM CORDLESS CIRCULAR SAW

Item	Sub	Parts No.	Parts Description	Qty	I/C	E/C No.	Close No.	Remark
001		911263-2	PAN HEAD SCREW M5X40	1				
002		265995-6	TAPPING SCREW 4X18	7				
003		183A15-9	HANDLE SET	1				
	C10	263005-3	RUBBER PIN 6	2				
	D10		INC. 18					
004		142948-1	INDICATION PLATE COMPLETE	1				
005		650734-1	SWITCH TG73BDS-2	1				
006		231469-9	COMPRESSION SPRING 4	1				
007		419664-3	LOCK OFF LEVER	1				
008		231469-9	COMPRESSION SPRING 4	1				
009		455480-9	SWITCH LEVER	1				
010		911263-2	PAN HEAD SCREW M5X40	3				
011		455437-0	MOTOR HOUSING	1				
012		850H69-0	DHS680 NAME PLATE	1				
013		632D90-5	STATOR UNIT	1			C0482	
013-1		629348-7	STATOR UNIT	1	<	C0482	DG919	
013-2		629B61-9	STATOR	1	S	DG919		
014		644808-8	TERMINAL	1				
015		632D81-6	SWITCH UNIT	1				
016		455440-1	BAFFLE PLATE	1				
017		911263-2	PAN HEAD SCREW M5X40	1				
018		183A15-9	HANDLE SET	1				
	C10	263005-3	RUBBER PIN 6	2				
	D10		INC. 3					
019		266091-3	TAPPING SCREW 4X50	2				
020		911128-8	P.H.SCREW M4X16 WITH WR	1				
021		455483-3	DUCT	1				
022		123269-0	HOOK ASSEMBLY	1				
023		911233-1	PAN HEAD SCREW M5X20	2				
024		142942-3	BLADE CASE COMPLETE	1			A6835	
	C10	213953-6	O RING 24	1			A6835	
024-1		143256-3	BLADE CASE COMPLETE	1	<	A6835		
	C10	213953-6	O RING 24	1		A6835		
025		519359-9	ROTOR ASS'Y	1			DF420	
	D10		INC. 26-28				DF420	
025-1		519359-9	ROTOR ASS'Y	1	O	DF420		
	D10		INC. 26-28			DF420		
026		210022-4	BALL BEARING 626DDW	1				
027		240045-8	FAN 55	1				
028		210051-7	BALL BEARING 609LLB	1				
029		346837-4	SHAFT LOCK	1				
030		286275-7	CAP	1				
031		233117-6	COMPRESSION SPRING 6	1				
032		262552-1	RUBBER SLEEVE 6	1				
033		251247-1	+ PAN HEAD SCREW M6X20	1				
034		266194-3	FLAT HEAD SCREW M6X90	1				
035		213565-5	O RING 42	1				
036		210028-2	BALL BEARING 606ZZ	1			B5278	
036-1		210137-7	BALL BEARING 606ZZ	1	O	B5278		
037		961052-5	RETAINING RING (EXT) S-12	1				
038		227794-4	HELICAL GEAR 50	1				
039		257349-1	SLEEVE 12	1				
040		911223-4	PAN HEAD SCREW M5X16	2				
041		319212-7	BEARING BOX	1				
042		211131-2	BALL BEARING 6001DDW	1				
043		326459-6	SPINDLE	1				
044		285845-9	BEARING RETAINER 19-29	1				
045		231878-2	TENSION SPRING 4	1				
046		319211-9	SAFETY COVER	1				
047		961152-1	RETAINING RING (EXT) S-34	1				
048		224473-5	INNER FLANGE 35	1			B7950	
048-1		224593-5	INNER FLANGE 35	1	<	B7950		
049		224409-4	OUTER FLANGE 35	1				
050		266924-2	HEX. SOCKET HEX. BOLT M6X18	1				
051		266034-5	TAPPING SCREW CT 4X16	1				

A:DHS680Z(N)
C:DHS680RFJ(H)

Interchange
O : Yes
X : No
< : the new part can be substituted for the current.
> : the current part can be substituted for the new.
S : Interchangeable as a set.

TH	THAILAND
----	----------

DHS680 / 165MM CORDLESS CIRCULAR SAW

Item	Sub	Parts No.	Parts Description	Qty	I/C	E/C No.	Close No.	Remark
052		272282-6	LEVER 60	1				
053		257982-9	BOW STOP RING E-8	1				
054		272272-9	LEVER 45	1				
055		266735-5	HEX.BOLT M6X20	1			D5231	
055-1		265B21-3	HEX.BOLT M6X20	1	S	D5231		
056		941151-9	FLAT WASHER 6	1			D5231	
057		252103-8	HEX. LOCK NUT M5-8	1				
058		346836-6	ANGULAR GUIDE	1				
059		317986-4	STOPPER	1				
060		213062-1	O RING 9	1				
061		265084-7	+ TRUSS HEAD SCREW M5	1				
062		256480-0	SHOULDER PIN 6-7	1				
063		911203-0	PAN HEAD SCREW M5X8	1			A7551	
063-1		911208-0	PAN HEAD SCREW M5X10	1	O	A7551		
064		455516-4	TOP GUIDE	1				
065		266318-1	H.S.SET SCREW(FLAT POINT)M4X6	2				
066		455517-2	BEVEL GUIDE	1				
067		251896-4	SCREW M5X20	1				
068		231007-7	COMPRESSION SPRING 6	1				
069		253058-0	FLAT WASHER 7	1			D7392	
070		256511-5	SHOULDER PIN 6-7	1				
071		346838-2	DEPTH GUIDE	1				
072		941151-9	FLAT WASHER 6	1				
073		332126-3	PIPE 6	1				
074		941151-9	FLAT WASHER 6	1				
075		264103-6	HEX. NUT M6	1				
076		272272-9	LEVER 45	1				
077		257982-9	BOW STOP RING E-8	1				
078		319210-1	BASE	1			D7392	
078-1		312B04-5	BASE	1	S	D7392		
079		266436-5	H.S.SET SCREW(FLAT POINT)M5X8	1				
080		266436-5	H.S.SET SCREW(FLAT POINT)M5X8	1				
081		266436-5	H.S.SET SCREW(FLAT POINT)M5X8	1				
082		251896-4	SCREW M5X20	1				
083		231007-7	COMPRESSION SPRING 6	1				
084		266436-5	H.S.SET SCREW(FLAT POINT)M5X8	1				
085		253077-6	FLAT WASHER 6	1				
086		620K93-3	CONTROLLER	1	S	DG919		
087		652119-7	PAN HEAD SCREW M2X6	6	S	DG919		
A01		783203-8	HEX. WRENCH 5	1				
A02		A-85101	T.C.T.SAW BLADE 165X24TX20	1			C8005	
A02-1		B-63018	TCT BLADE 165X25T WOOD EFFICUT	1	X	C8005		
A03		164095-8	GUIDE RULE	1				
A04C		***DC18RC	DC18RC FAST CHARGER	1				
A05C		196015-4	BATTERY BL1830 SET	2			A5588	
A05-1C		196015-4	BATTERY BL1830 SET	2	O	A5588	B2535	
A05-2C		197600-6	BATTERY BL1830B SET	2	<	B2535	C2803	
A05-3C		199283-8	BATTERY BL1830B SET	2	<	C2803	D0159	
A05-4C		199283-8	BATTERY BL1830B SET	2	<	D0159		
A06C		450128-8	BATTERY COVER	1				
A07C		821551-8	CONNECTOR PLASTIC CASE (TYPE3)	1				
	C10	453974-8	LATCH	4				
A08C		838182-6	INNER TRAY	1				
A09C		805V72-0	DHS680RFJ INDICATION LABEL	1				
A10C		805V74-6	DHS680RFJ PLASTIC CASE LABEL	2			C8771	
A10-1C		806G48-0	DHS680RFJ PLASTIC CASE LABEL	2	O	C8771		
F13		194368-5	GUIDE RAIL 1400 SET	1				
F14		194925-9	GUIDE RAIL 1900 SET	1				
F16		194367-7	GUIDE RAIL 3000 SET	1				
F18		196664-7	BEVEL GUIDE SET	1				
F21		194416-0	SHEET 10000 SET	1				
F22		194417-8	RUBBER SHEET 10000 SET	1				
F23		194418-6	POSITION SHEET 1400 SET	1				
F25		194910-2	POSITION SHEET 1900 SET	1				
F37		199140-0	GUIDE RAIL 1000 SET	1		C0856		

A:DHS680Z(N)
C:DHS680RFJ(H)

Interchange
O : Yes
X : No
< : the new part can be substituted for the current.
> : the current part can be substituted for the new.
S : Interchangeable as a set.

