



TH	THAILAND
----	----------

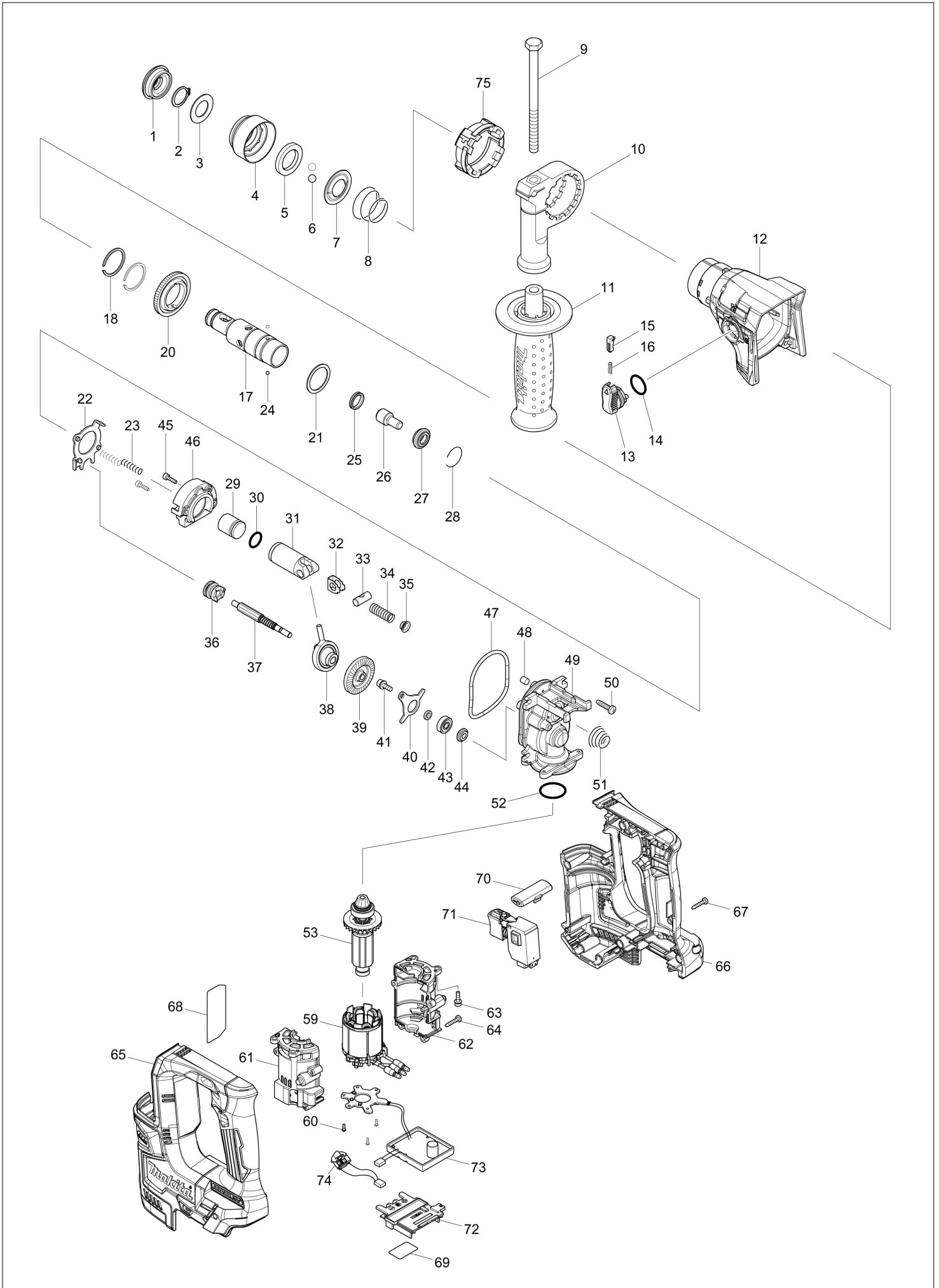
# Diagram / Parts List

**DHR171**

**17MM CORDLESS ROTARY HAMMER**



# (TH) DHR171 / 17MM CORDLESS ROTARY HAMMER



<b>TH</b>	<b>THAILAND</b>
-----------	-----------------

### DHR171 / 17MM CORDLESS ROTARY HAMMER

Item	Sub	Parts No.	Parts Description	Qty	I/C	E/C No.	Close No.	Remark
001		286037-3	CAP 34	1				
002		961057-5	RETAINING RING S-17	1				
003		253377-4	FLAT WASHER 17	1				
004		457214-6	CHUCK COVER	1				
005		257416-2	RING 21	1				
006		216022-2	STEEL BALL 7.0	2				
007		346177-0	GUIDE WASHER	1				
008		232347-6	CONICAL COMP. SPRING 21-29	1				
009		921923-8	HEX. BOLT M8X120	1				
010		417911-6	GRIP BASE	1				
011		158057-6	GRIP 36 COMPLETE	1				
	C10	931402-8	HEX. NUT M8	1				
012		144218-4	GEAR HOUSING COMPLETE	1				
	C10	211375-4	BALL BEARING 6805LLB	1				
	C20	213788-5	OIL SEAL 25	1				
013		161569-0	CHANGE LEVER COMPLETE	1				
014		213278-8	O RING 17	1				
015		161568-2	LOCK BUTTON COMPLETE	1				
016		232344-2	COMPRESSION SPRING 3	1				
017A		326841-9	TOOL HOLDER	1			DD784	
017B		326841-9	TOOL HOLDER	1			DD784	
017C		326841-9	TOOL HOLDER	1			DD784	
017-1A		326841-9	TOOL HOLDER	1	O	DD784		
017-1B		326841-9	TOOL HOLDER	1	O	DD784		
017-1C		326841-9	TOOL HOLDER	1	O	DD784		
017-1D		326841-9	TOOL HOLDER	1				
018		961135-1	RETAINING(EXT) WR-25	2				
020		221483-3	SPUR GEAR 57	1				
021		267175-0	FLAT WASHER 24	1				
022		161570-5	CHANGE PLATE COMPLETE	1				
023		233194-8	COMPRESSION SPRING 4	2				
024		216019-1	STEEL BALL 3	2				
025		213183-9	X RING 13	1				
026		326843-5	IMPACT BOLT	1				
027		326842-7	RING 10	1				
028		232343-4	RING SPRING 23	1				
029		327007-4	STRIKER	1				
030		213128-7	O RING 12	1				
031		319510-9	PISTON CYLINDER	1				
032		347101-6	GUIDE PLATE	1				
033		326846-9	PISTON JOINT	1				
034		232346-8	COMPRESSION SPRING 8	1				
035		347102-4	SPRING GUIDE	1				
036		326845-1	CLUTCH CAM	1				
037		221482-5	SPUR GEAR 8	1				
038		219026-3	SWASH BEARING 6	1				
039		221481-7	SPIRAL BEVEL GEAR 37	1				
040		347100-8	BEARING RETAINER	1				
041		266273-7	HEX. SOCKET HEAD BOLT M4X12	1				
042		257415-4	RING 5	1				
043		210065-6	BALL BEARING 625ZZ	1				
044		326847-7	RING 5	1				
045		265910-0	HEX. SOCKET HEAD BOLT M3X12	2				
046		144219-2	INNER SUPPORT COMPLETE	1				
047A		213092-2	O-RING 60	1			C8367	
047B		213092-2	O-RING 60	1			C8367	
047C		213092-2	O-RING 60	1			C8367	
047-1A		213889-9	O-RING 58	1	<	C8367		
047-1B		213889-9	O-RING 58	1	<	C8367		
047-1C		213889-9	O-RING 58	1	<	C8367		
047-1D		213889-9	O-RING 58	1				
048		443138-2	FILTER	1				
049A		319508-6	INNER HOUSING	1			C8367	
049B		319508-6	INNER HOUSING	1			C8367	
049C		319508-6	INNER HOUSING	1			C8367	

A:DHR171Z(N)  
 B:DHR171RTJ(H)  
 C:DHR171RFJ(H)  
 D:DHR171RFX3(H)

Interchange  
 O : Yes  
 X : No  
 < : the new part can be substituted for the current.  
 > : the current part can be substituted for the new.  
 S : Interchangeable as a set.

<b>TH</b>	<b>THAILAND</b>
-----------	-----------------

### DHR171 / 17MM CORDLESS ROTARY HAMMER

Item	Sub	Parts No.	Parts Description	Qty	I/C	E/C No.	Close No.	Remark
049-1A		140N37-0	INNER HOUSING COMPLETE	1	<	C8367	DH798	
049-1B		140N37-0	INNER HOUSING COMPLETE	1	<	C8367	DH798	
049-1C		140N37-0	INNER HOUSING COMPLETE	1	<	C8367	DH798	
049-1D		140N37-0	INNER HOUSING COMPLETE	1			DH798	
049-2		312B69-7	INNER HOUSING	1	<	DH798		
050		265995-6	TAPPING SCREW 4X18	4				
051		232345-0	CONICAL COMP. SPRING 8-19	1				
052		213008-7	O RING 22.4	1				
053A		619421-1	ROTOR	1			C7536	
053B		619421-1	ROTOR	1			C7536	
053C		619421-1	ROTOR	1			C7536	
053-1A		619421-1	ROTOR	1	O	C7536		
053-1B		619421-1	ROTOR	1	O	C7536		
053-1C		619421-1	ROTOR	1	O	C7536		
053-1D		619421-1	ROTOR	1				
059		629283-9	STATOR	1				
060		266490-9	TAPPING SCREW PT 2X6	3				
061		183G09-0	MOTOR CASE SET	1				
	D10		INC. 62					
062		183G09-0	MOTOR CASE SET	1				
	D10		INC. 61					
063		251510-2	H. S. HEAD BOLT M3X12 WITH WRM	4				
064		266130-9	TAPPING SCREW BIND PT 3X16	4				
065		183H25-8	HOUSING SET	1				
	C10	252126-6	HEX. LOCK NUT M4-7	2				
	C20	262182-8	RUBBER RING 6	2				
	C30	263005-3	RUBBER PIN 6	2				
	D10		INC. 66					
066		183H25-8	HOUSING SET	1				
	C10	252126-6	HEX. LOCK NUT M4-7	2				
	C20	262182-8	RUBBER RING 6	2				
	C30	263005-3	RUBBER PIN 6	2				
	D10		INC. 65					
067		266130-9	TAPPING SCREW BIND PT 3X16	9				
068		853R59-2	DHR171 NAME PLATE	1				
069		853R80-1	DHR171 SERIAL NO. LABEL	1				
070		457210-4	F/R CHANGE LEVER	1				
071		650689-0	SWITCH C3JW-2B	1			DH213	
071-1		650005-6	SWITCH TGRK1-1	1	O	DH213		
072		643874-2	TERMINAL	1				
073		620746-8	CONTROLLER	1				
074		620747-6	LED CIRCUIT	1				
A01		415486-9	DEPTH GAUGE	1				
A02D		181573-3	GREASE VESSEL 93G	1				
A03B		821551-8	CONNECTOR PLASTIC CASE (TYPE3)	1				
	C10	453974-8	LATCH	4				
A03C		821551-8	CONNECTOR PLASTIC CASE (TYPE3)	1				
	C10	453974-8	LATCH	4				
A03D		821906-7	PLASTIC CASE	1			Y09107	
	C10	455522-9	SLIDE LATCH	2			Y09107	
A03-1D		183W49-4	PLASTIC CASE SET	1	S	Y09107		
	C10	455522-9	SLIDE LATCH	2		Y09107		
A04B		813S37-0	DHR171RTJ PLASTIC CASE LABEL	2				
A04C		813S32-0	DHR171RFJ PLASTIC CASE LABEL	2				
A05B		813S36-2	DHR171RTJ INDICATION LABEL	1				
A05C		813S30-4	DHR171RFJ INDICATION LABEL	1				
A06B		839387-1	INNER TRAY	1				
A06C		839387-1	INNER TRAY	1				
A07B		450128-8	BATTERY COVER	1				
A07C		450128-8	BATTERY COVER	1				
A07D		450128-8	BATTERY COVER	1				
A08B		***DC18RC	DC18RC FAST CHARGER	1				
A08C		***DC18RC	DC18RC FAST CHARGER	1				
A08D		***DC18RC	DC18RC FAST CHARGER	1				
A09B		197280-8	BATTERY BL1850B SET	2			C2803	

A:DHR171Z(N)  
 B:DHR171RTJ(H)  
 C:DHR171RFJ(H)  
 D:DHR171RFX3(H)

Interchange  
 O : Yes  
 X : No  
 < : the new part can be substituted for the current.  
 > : the current part can be substituted for the new.  
 S : Interchangeable as a set.

