



TH	THAILAND
----	----------

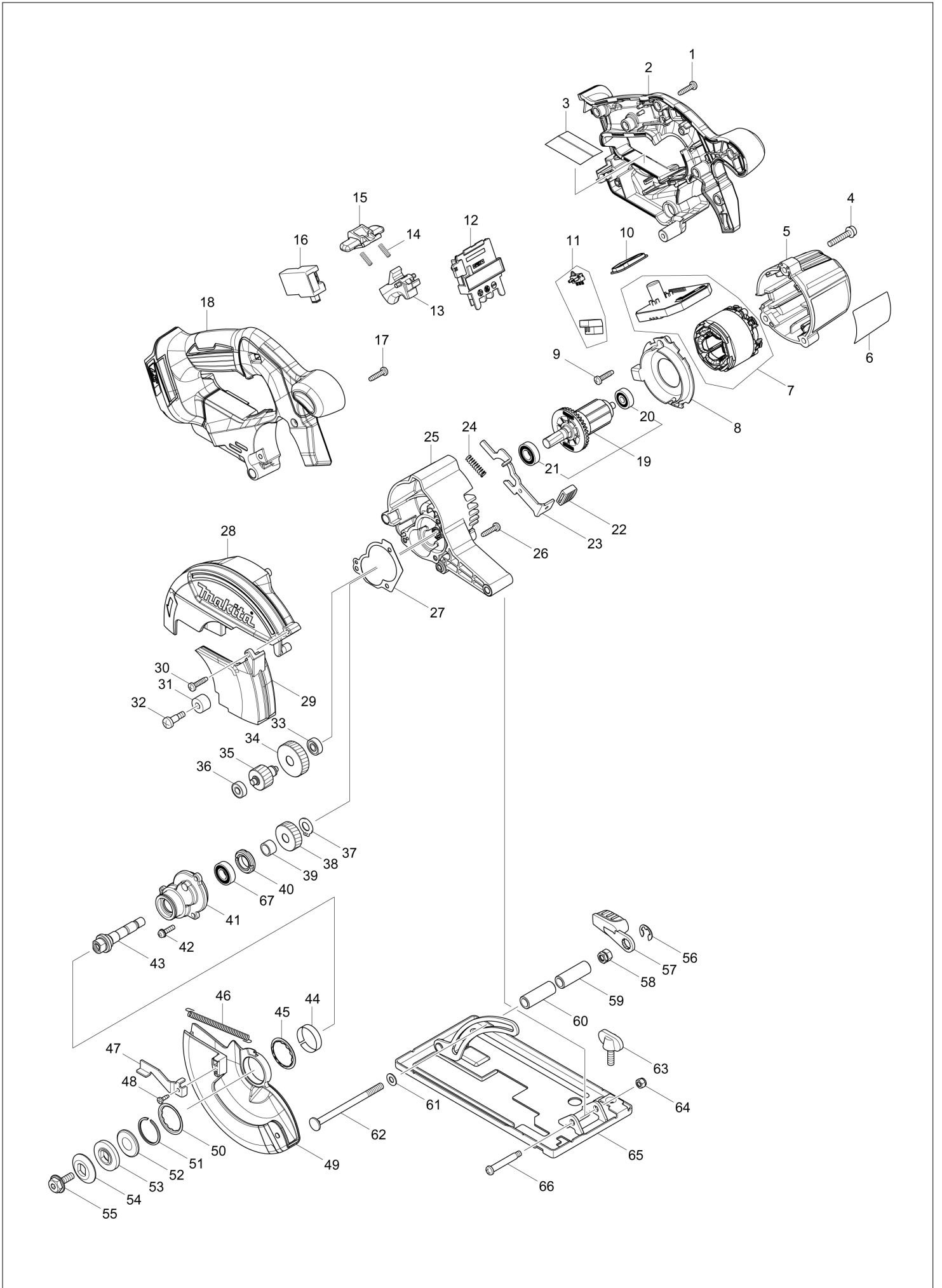
Diagram / Parts List

DCS551

150MM CORDLESS METAL CUTTER



(TH) DCS551 / 150MM CORDLESS METAL CUTTER



TH	THAILAND
----	----------

DCS551 / 150MM CORDLESS METAL CUTTER

Item	Sub	Parts No.	Parts Description	Qty	I/C	E/C No.	Close No.	Remark
001		265995-6	TAPPING SCREW 4X18	8				
002		183B24-4	HANDLE SET	1				
	C10	263005-3	RUBBER PIN 6	2				
	D10		INC. 18					
004		911253-5	PAN HEAD SCREW M5X30	3				
005		455900-3	MOTOR HOUSING	1				
006		850X99-7	DCS551 NAME PLATE	1				
007		632E36-7	STATOR UNIT	1			DL065	
007-1		629C16-0	STATOR	1	S	DL065		
008		455897-6	BAFFLE PLATE	1				
009		265995-6	TAPPING SCREW 4X18	2				
010		142948-1	INDICATION PLATE COMPLETE	1				
011		632E44-8	SWITCH UNIT	1				
012		643899-6	TERMINAL	1				
013		455480-9	SWITCH LEVER	1				
014		231469-9	COMPRESSION SPRING 4	2				
015		419664-3	LOCK OFF LEVER	1				
016		650734-1	SWITCH TG73BDS-2	1				
017		265995-6	TAPPING SCREW 4X18	2				
018		183B24-4	HANDLE SET	1				
	C10	263005-3	RUBBER PIN 6	2				
	D10		INC. 2					
019		519365-4	ROTOR ASS'Y	1			C2738	
	D10		INC. 20,21				C2738	
019-1		519530-5	ROTOR ASS'Y	1	<	C2738	D0287	
	D10		INC. 20,21			C2738	D0287	
019-2		510437-8	ROTOR ASS'Y	1	<	D0287	DF420	
	D10		INC. 20,21			D0287	DF420	
019-3		510437-8	ROTOR ASS'Y	1	O	DF420		
	D10		INC. 20,21			DF420		
020		210022-4	BALL BEARING 626DDW	1				
021		210069-8	BALL BEARING 6900DDW	1			D0287	
021-1		210214-5	BALL BEARING 6900DDW	1	<	D0287		
022		286275-7	CAP	1				
023		346885-3	SHAFT LOCK	1				
024		233117-6	COMPRESSION SPRING 6	1				
025		143229-6	GEAR HOUSING COMPLETE	1				
	C10	213961-7	O RING 22	1				
026		265995-6	TAPPING SCREW 4X18	2				
027		424715-9	GASKET	1				
028		455899-2	BLADE CASE	1				
029		455898-4	BLADE COVER	1				
030		265995-6	TAPPING SCREW 4X18	1				
031		262511-5	RUBBER SLEEVE 6	1				
032		265115-2	+ PAN HEAD SCREW M5	1				
033		210065-6	BALL BEARING 625ZZ	1				
034		227809-7	HELICAL GEAR 30	1				
035		227807-1	HELICAL GEAR 17	1				
036		210033-9	BALL BEARING 696ZZ	1				
037		961005-4	RETAINING RING S-9	1				
038		227808-9	HELICAL GEAR 24	1				
039		257728-3	SLEEVE 10	1				
040		285847-5	BEARING RETAINER 14-23	1				
041		143228-8	BEARING BOX COMPLETE	1				
	C10	263002-9	RUBBER PIN 4	1				
042		911128-8	P.H.SCREW M4X16 WITH WR	3				
043		326540-3	SPINDLE	1				
044		345470-9	THICKNESS RING	1				
045		345739-1	SPACER	1				
046		231792-2	TENSION SPRING 3	1				
047		272285-0	LEVER 48	1				
048		266007-8	TAPPING SCREW BIND PT 3X10	1				
049		143155-9	SAFETY COVER COMPLETE	1				
050		345739-1	SPACER	1				
051		257938-2	RETAINING RING(EXT) WR-26	1				

A:DCS551RMJ(H)
 B:DCS551RFJ(H)
 C:DCS551Z(N)

Interchange
 O : Yes
 X : No
 < : the new part can be substituted for the current.
 > : the current part can be substituted for the new.
 S : Interchangeable as a set.

