



TH	THAILAND
----	----------

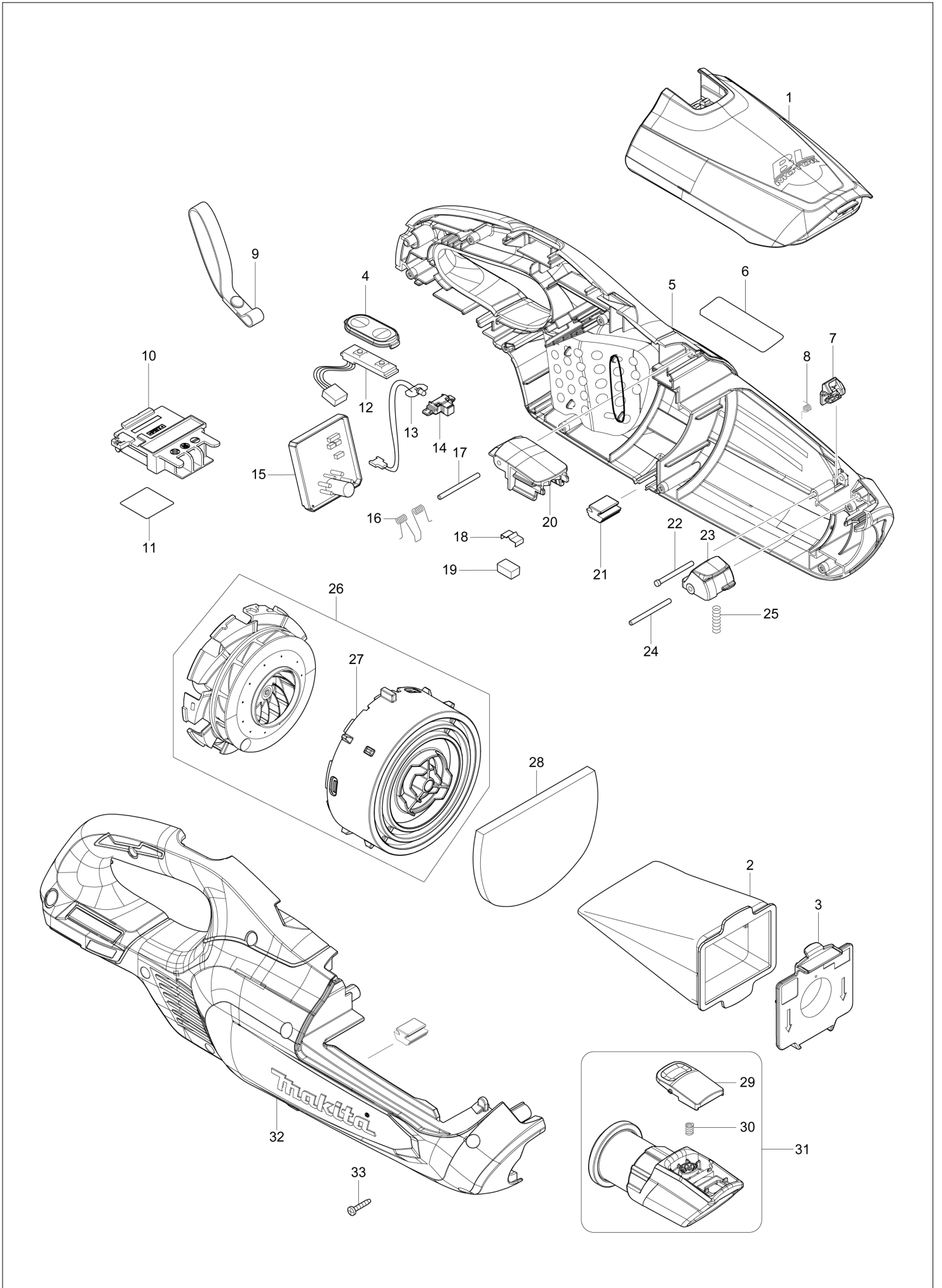
# Diagram / Parts List

**DCL282F**

**CORDLESS CLEANER**



(TH) DCL282F / CORDLESS CLEANER



TH	THAILAND
----	----------

### DCL282F / CORDLESS CLEANER

Item	Sub	Parts No.	Parts Description	Qty	I/C	E/C No.	Close No.	Remark
001A		140L57-2	FRONT COVER COMPLETE	1				
001B		140L56-4	FRONT COVER COMPLETE	1				
	C10	424093-7	SEAL	1				
002		166119-6	EASY SHAKE OFF DUST BAG	1				
003		140K23-3	VALVE STAY COMPLETE	1				
004		144096-2	SWITCH PLATE COMPLETE	1				
005A		183M11-9	HOUSING SET	1				
005B		183L70-7	HOUSING SET	1				
	C10	263005-3	RUBBER PIN 6	2				
	C20	422458-7	SPONGE SHEET 55-80	2				
	C30	213008-7	O RING 22.4	2				
	D10		INC. 21,32					
006		855T39-6	DCL282F NAME PLATE	1				
007A		459352-0	STOPPER PLATE	1				
007B		459327-9	STOPPER PLATE	1				
008		232484-6	TORSION SPRING 4	1				
009		163400-6	HANDSTRAP	1		DB918		
010		643874-2	TERMINAL	1				
011		855T46-9	DCL282F SERIAL NO. LABEL	1				
012		620A77-1	SWITCH UNIT	1				
013		620A76-3	LED CIRCUIT	1			D5628	
013-1		620E82-2	LED CIRCUIT	1	<	D5628		
014		459478-8	LENS CASE	1				
015		620A75-5	CONTROLLER	1				
016		233580-3	TORSION SPRING 4	1				
017		268271-7	PIN 3	1				
018		232264-0	LEAF SPRING	1				
019		424367-6	RUBBER	1				
020A		459350-4	FRONT COVER JOINT	1				
020B		459330-0	FRONT COVER JOINT	1				
021		422460-0	RUBBER PLATE	2				
022		256590-3	FLAT FILLISTER HD. PIN 3	1				
023A		459348-1	BUTTON B	1				
023B		459329-5	BUTTON B	1				
024		268271-7	PIN 3	1				
025		233344-5	COMPRESSION SPRING 4	1				
026		136092-4	MOTOR ASS'Y	1				
	D10		INC. 27					
027		459322-9	FAN COVER	1				
028		424804-0	SPONGE SHEET 76-110	1				
029		458939-5	BUTTON A	1				
030		232485-4	COMPRESSION SPRING 5	1				
031A		136107-7	INLET ASS'Y	1				
031B		136095-8	INLET ASS'Y	1				
	C10	424094-5	PACKING	1				
	D10		INC. 29,30					
032A		183M11-9	HOUSING SET	1				
032B		183L70-7	HOUSING SET	1				
	C10	263005-3	RUBBER PIN 6	2				
	C20	422458-7	SPONGE SHEET 55-80	2				
	C30	213008-7	O RING 22.4	2				
	D10		INC. 5,21					
033		266429-2	TAPPING SCREW 3X16	9				
A01A		123488-8	FLOOR T-NOZZLE 28 BLU	1				
A01B		123486-2	FLOOR T-NOZZLE 28 WHI	1				
	C10	451410-8	ROLLER	4				
	C20	268208-4	PIN 3	4				
	C30	424096-1	WIPER	1			DE874	
	C31	422963-4	WIPER	1	O	DE874		
A02		194566-1	PAPER FILTER SET (5PCS/SET)	1			DJ570	
A02-1		198745-3	PAPER FILTER SET	1	O	DJ570		
A03A		451243-1	SASH NOZZLE 28 BLU	1			DA844	
A03B		451240-7	SASH NOZZLE 28 WHI	1			DA844	
A03-1A		413859-0	SASH NOZZLE	1	O	DA844		
A03-1B		413770-6	SASH NOZZLE	1	O	DA844		

A:DCL282FZ(N)  
B:DCL282FZW(N)

Interchange  
O : Yes  
X : No  
< : the new part can be substituted for the current.  
> : the current part can be substituted for the new.  
S : Interchangeable as a set.

