



TH	THAILAND
----	----------

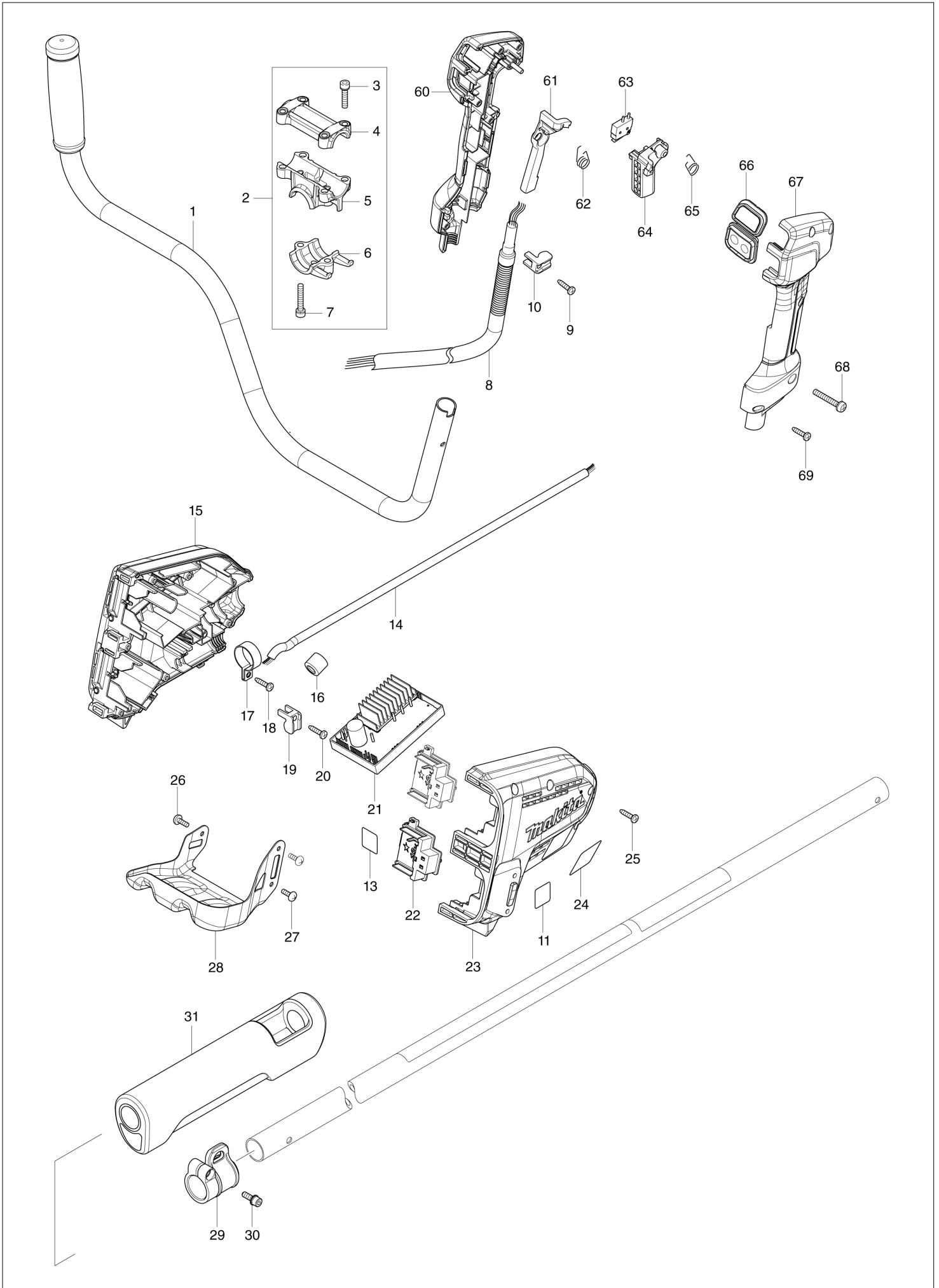
Diagram / Parts List

DUR368A

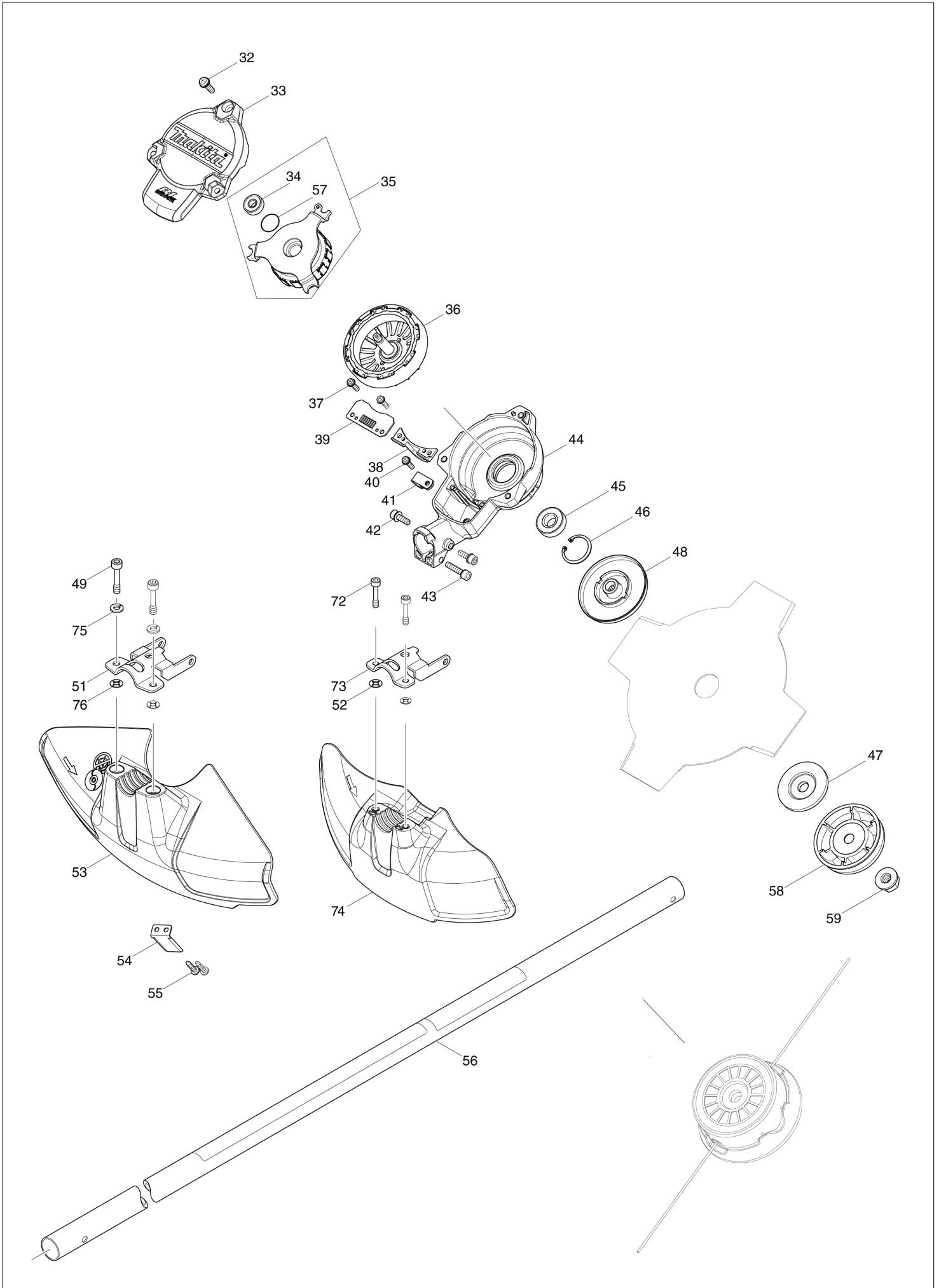
CORDLESS GRASS TRIMMER



(TH) DUR368A / CORDLESS GRASS TRIMMER



(TH) DUR368A / CORDLESS GRASS TRIMMER



TH	THAILAND
----	----------

DUR368A / CORDLESS GRASS TRIMMER

Item	Sub	Parts No.	Parts Description	Qty	I/C	E/C No.	Close No.	Remark
001		140L83-1	HANDLE 19 COMPLETE	1				
002		135395-3	HANDLE HOLDER ASS'Y	1				
	D10		INC. 3-7					
003		922241-7	HEX. SOCKET HEAD BOLT M5X25	4				
004		318272-6	HANDLE HOLDER 1	1				
005		318273-4	HANDLE HOLDER 2	1				
006		318274-2	HANDLE HOLDER 3	1				
007		922251-4	HEX. SOCKET HEAD BOLT M5X30	2				
008		699118-8	POWER SUPPLY CORD UNIT	1				
009		266326-2	TAPPING SCREW 4X18	1				
010		687260-7	STRAIN RELIEF	1				
013		855V64-9	DUR368A SERIAL NO. LABEL	1				
014		699067-9	POWER SUPPLY CORD UNIT	1				
015		183L33-3	HOUSING SET	1				
	C10	263005-3	RUBBER PIN 6	4				
	C20	252126-6	HEX. LOCK NUT M4-7	3				
	D10		INC. 23					
017		346248-3	CLAMP 24	1				
018		266326-2	TAPPING SCREW 4X18	1				
019		687260-7	STRAIN RELIEF	1				
020		266326-2	TAPPING SCREW 4X18	1				
021		620A36-5	CONTROLLER	1			DA868	
021-1		620G00-2	CONTROLLER	1	<	DA868	DG044	
021-2		620J84-8	CONTROLLER	1	S	DG044		
022		644808-8	TERMINAL	2				
023		183L33-3	HOUSING SET	1				
	C10	263005-3	RUBBER PIN 6	4				
	C20	252126-6	HEX. LOCK NUT M4-7	3				
	D10		INC. 15					
024		855V55-0	DUR368A NAME PLATE	1				
025		266326-2	TAPPING SCREW 4X18	7				
026		251314-2	+ SCREW M4X12	1				
027		251314-2	+ SCREW M4X12	2				
028		346858-6	BATTERY GUARD	1				
029		168478-4	HANGER	1				
030		922228-9	H.S.H.BOLT M5X18 WITH WR	1				
031		424463-0	CUSHION	1				
032		911233-1	PAN HEAD SCREW M5X20	3				
033		455626-7	TOP COVER	1				
034		210062-2	BALL BEARING 607ZZ	1			DA997	
034-1		210269-0	BALL BEARING 607ZZ	1	O	DA997		
035		529146-8	STATOR ASS'Y	1			DC143	
	D10		INC. 34,57				DC143	
035-1		520136-4	STATOR ASS'Y	1	<	DC143	DA997	
	D10		INC. 34,57			DC143	DA997	
035-2		520135-6	STATOR ASS'Y	1	O	DA997	DG044	
	D10		INC. 34,57			DA997	DG044	
035-3		592E25-3	STATOR ASS'Y	1	S	DG044		
	D10		INC. 34,57			DG044		
036		619462-7	ROTOR	1				
037		911128-8	P.H.SCREW M4X16 WITH WR	2				
038		455628-3	INNER COVER	1				
039		620562-8	CONTROLLER B	1			D7793	
039-1		620E48-2	CONTROLLER B	1	O	D7793	DG044	
039-2		620J62-8	CONTROLLER B	1	S	DG044		
040		911128-8	P.H.SCREW M4X16 WITH WR	1				
041		687042-7	STRAIN RELIEF	1				
042		922223-9	H.S.H.BOLT M5X16 WITH WR	2				
043		922241-7	HEX. SOCKET HEAD BOLT M5X25	1				
044		143039-1	MOTOR HOUSING COMPLETE	1				
045		211131-2	BALL BEARING 6001DDW	1				
046		962106-1	RETAINING RING R-28	1				
048		140L84-9	RECEIVE WASHER COMPLETE G	1				
049		266579-3	HEX SOCKET HEAD BOLT M6X30	2				
051		346073-2	PROTECTOR CLAMP	1				

A:DUR368AZ(N)

Interchange
O : Yes
X : No
< : the new part can be substituted for the current.
> : the current part can be substituted for the new.
S : Interchangeable as a set.

