



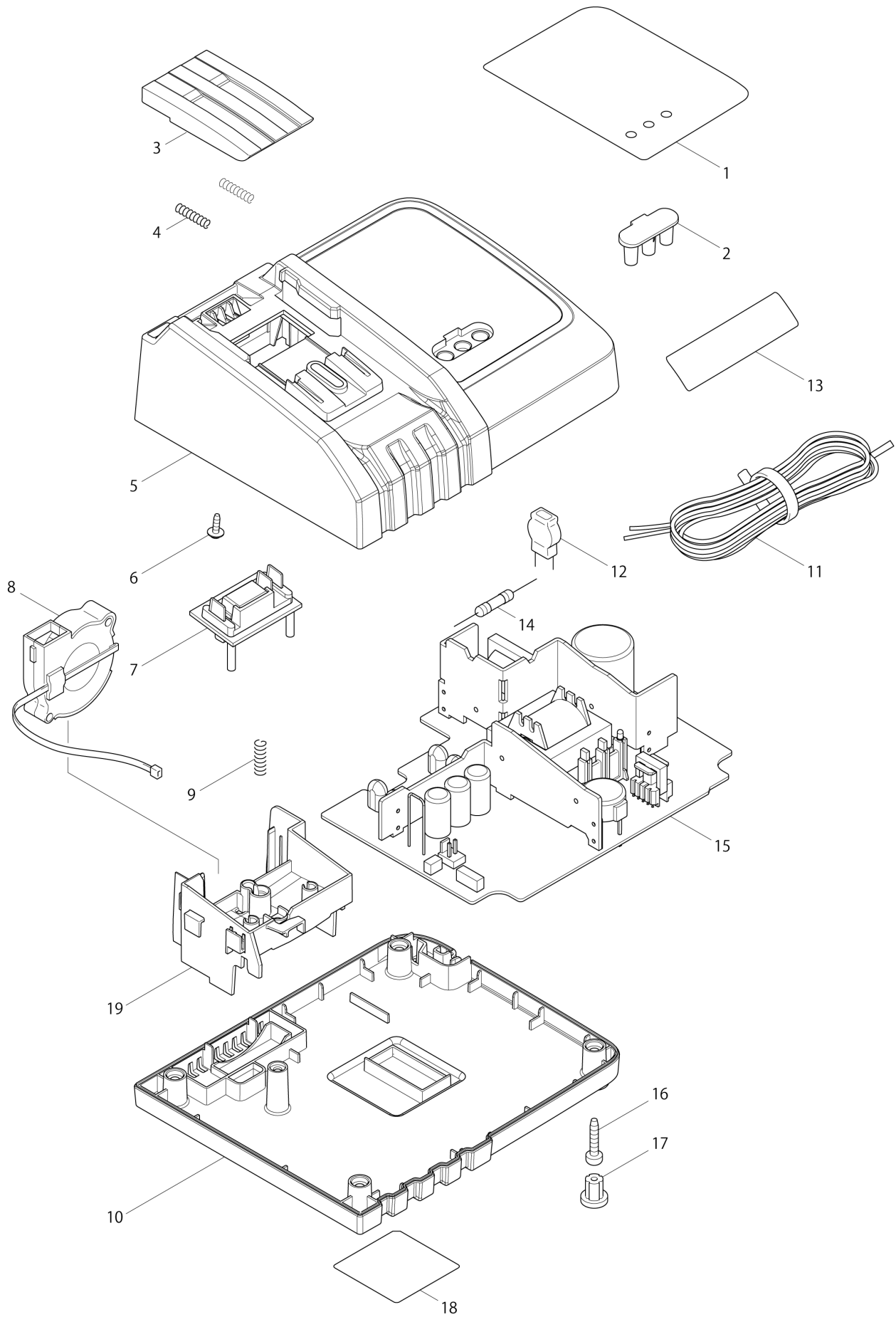
TH THAILAND

Diagram / Parts List

DC18RC
CHARGER



(TH) DC18RC / CHARGER



TH	THAILAND
-----------	-----------------

DC18RC / CHARGER

Item	Sub	Parts No.	Parts Description	Qty	I/C	E/C No.	Close No.	Remark
001		892752-5	CHARGING CONDITION LABEL	1			B4875	
001-1		810V46-8	CHARGING CONDITION LABEL	1	O	B4875		
002		452661-6	LENZ	1				
002A		452862-6	LENS	1				(SONY)
003		419569-7	TERMINAL COVER	1			A8326	
003-1		455546-5	TERMINAL COVER	1	<	A8326		
004		231474-6	COMPRESSION SPRING 4	2				
005		140824-3	CHARGER CASE COMPLETE	1				
	D10		INC. 2					
005A		140977-8	CHARGER CASE COMPLETE	1		93341		(SONY)
	D10		INC. 2A					
006		266278-7	TAPPING SCREW FLANGE BT3X10	1				
007		638847-8	TERMINAL UNIT	1			97786	
007-1		638847-8	TERMINAL UNIT	1	O	97786		
007A		638987-2	TERMINAL UNIT	1		93341		(SONY)
008		638499-5	SCIROCCO FAN	1				
009		233194-8	COMPRESSION SPRING 4	1				
010		452659-3	CHARGER CASE COVER	1				
010A		452860-0	CHARGER CASE COVER	1		93341		(SONY)
011		667985-9	VINYL CORD 0.75-2-2.0	1				
011A		667884-5	POWER SUPPLY CORD	1		93341	Y07038	(SONY)
011A1		667985-9	VINYL CORD 0.75-2-2.0	1	<	Y07038		(SONY)
012		647321-5	VARISTOR	1				
014		652782-6	FUSE	1			Y07304	
014-1		652797-3	FUSE	1	<	Y07304		
014A		652800-0	FUSE	1		93341		(SONY)
015		620067-8	CHARGING CIRCUIT	1				
	D10		INC. 12,14					
015A		620120-0	CHARGING CIRCUIT	1		93341		(SONY)
	D10		INC. 12,14A					
016		266346-6	TAPPING SCREW BT 4X20	5			93341	
016-1		266346-6	TAPPING SCREW BT 4X20	4	O	93341	D0516	
016-2		265B01-9	TAPPING SCREW PT 4X20	4	<	D0516		
016A		266426-8	TAPPING SCREW 4X20	4		93341		(SONY)
017		286255-3	CAP 13	4				
018		869949-1	DC18RC NAME PLATE	1			DD348	
018-1		869949-1	DC18RC NAME PLATE	1	O	DD348		
019		452660-8	TERMINAL BASE	1				
019A		452861-8	TERMINAL BASE	1		93341		(SONY)
020		266346-6	TAPPING SCREW BT 4X20	1		93341	D0516	(TAMURA)
020-1		265B01-9	TAPPING SCREW PT 4X20	1	<	D0516		(TAMURA)
020A		266764-8	TAPPING SCREW 3X8	3		93341		(SONY)

A:DC18RC(H)

Interchange
 O : Yes
 X : No
 < : the new part can be substituted for the current.
 > : the current part can be substituted for the new.
 S : Interchangeable as a set.