



TH	THAILAND
----	----------

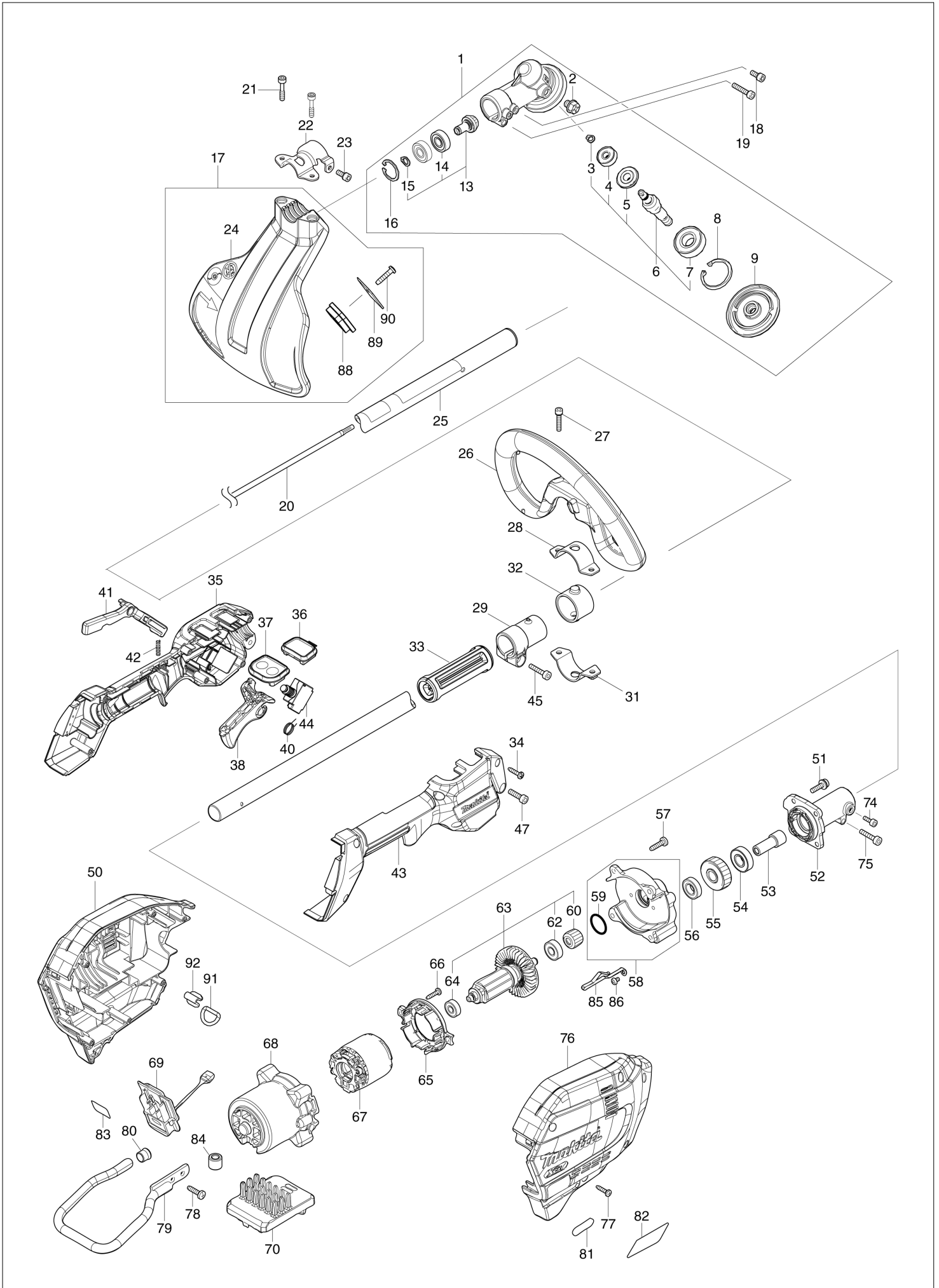
Diagram / Parts List

UR008G

CORDLESS GRASS TRIMMER



(TH) UR008G / CORDLESS GRASS TRIMMER



TH	THAILAND
----	----------

UR008G / CORDLESS GRASS TRIMMER

Item	Sub	Parts No.	Parts Description	Qty	I/C	E/C No.	Close No.	Remark
001		127380-0	GEAR CASE ASSEMBLY US	1				
	D10		INC. 2,6,8,9,13,16					
002		265590-2	+HEX.BOLT M8X10 WITH R	1				
003		259070-8	RETAINING RING (EXT) S-7	1				
004		210030-5	BALL BEARING 627ZZ	1				
005		226954-5	SPIRAL BEVEL GEAR 21	1				
006		136234-0	CUTTER SHAFT ASS'Y	1				
	D10		INC 3-5,7					
007		211228-7	BALL BEARING 6202DDW	1				
008		259069-3	RETAINING RING (INT) R-35	1				
009		140N88-3	RECEIVE WASHER COMPLETE	1				
013		136236-6	SPIRAL BEVEL GEAR ASS'Y	1				
	D10		INC. 14,15					
014		210049-4	BALL BEARING 609ZZ	2				
015		259071-6	RETAINING RING (EXT) S-9	1				
016		259072-4	RETAINING RING (INT)R-24	1				
017		191B55-9	PROTECTOR N 430 SET MG	1				
	D10		INC. 24,88-90					
018		922216-6	HEX. SOCKET HEAD BOLT M5X14	1				
019		922242-5	HEX. SOCKET HEAD BOLT M5X25	1				
020		327056-1	SHAFT	1				
021		251513-6	H.S.H.BOLT M5X25	2				
022		347107-4	PROTECTOR CLAMP 24	1				
023		922216-6	HEX. SOCKET HEAD BOLT M5X14	1				
024		457273-0	PROTECTOR N 420-450	1				
025		140S83-3	SHAFT PIPE COMPLETE J	1				
	C10	819312-8	MAKITA LOGO LABEL	1				
	C20	8008K7-9	CAUTION LABEL	1				
026		457267-5	LOOP HANDLE	1				
	C10	263005-3	RUBBER PIN 6	1				
027		922234-4	H.S.H.BOLT M5X20 WITH WG	2				
028		347113-9	UPPER CLAMP 35	1				
029		457269-1	PIPE HOLDER 24	1				
031		347114-7	LOWER CLAMP 35	1				
032		424942-8	DAMPER	1				
033		451601-1	SPACER 24	1				
034		266326-2	TAPPING SCREW 4X18	6				
035		183S36-9	GRIP SET	1				
	D10		INC. 43					
036		141D25-0	INDICATION CIRCUIT COMPLETE E	1				
037		140W06-5	SWITCH CIRCUIT COMPLETE G	1				
	C10	819J26-9	SWITCH LABEL	1				
038		459758-2	SWITCH LEVER	1				
040		233622-3	TORSION SPRING 12	1				
041		459759-0	LOCK OFF LEVER	1				
042		233101-1	COMPRESSION SPRING 4	1				
043		183S36-9	GRIP SET	1				
	D10		INC. 35					
044		651492-2	SWITCH C3JR-1A-PAXD3	1				
045		922244-1	H.S.H.BOLT M5X25 WITH WG	1				
047		922233-6	H.S.H.BOLT M5X20 WITH WR	1				
050		183S87-2	HOUSING SET	1			Y08665	
	C10	263005-3	RUBBER PIN 6	2			Y08665	
	D10		INC. 76				Y08665	
050-1		183R88-4	HOUSING SET	1	<	Y08665		
	C10	263005-3	RUBBER PIN 6	2		Y08665		
	D10		INC. 76			Y08665		
051		911233-1	PAN HEAD SCREW M5X20	4				
052		140Y38-4	PIPE BRACKET COMPLETE	1				
	C10	263002-9	RUBBER PIN 4	1				
053		325811-5	SPINDLE HUB	1				
054		211131-2	BALL BEARING 6001DDW	1				
055		227848-7	HELICAL GEAR 33	1				
056		211150-8	BALL BEARING 6901ZZ	1				
057		266420-0	TAPPING SCREW 5X20	4				

B:UR008GM101(H)

Interchange
 O : Yes
 X : No
 < : the new part can be substituted for the current.
 > : the current part can be substituted for the new.
 S : Interchangeable as a set.

