



| | |
|----|----------|
| TH | THAILAND |
|----|----------|

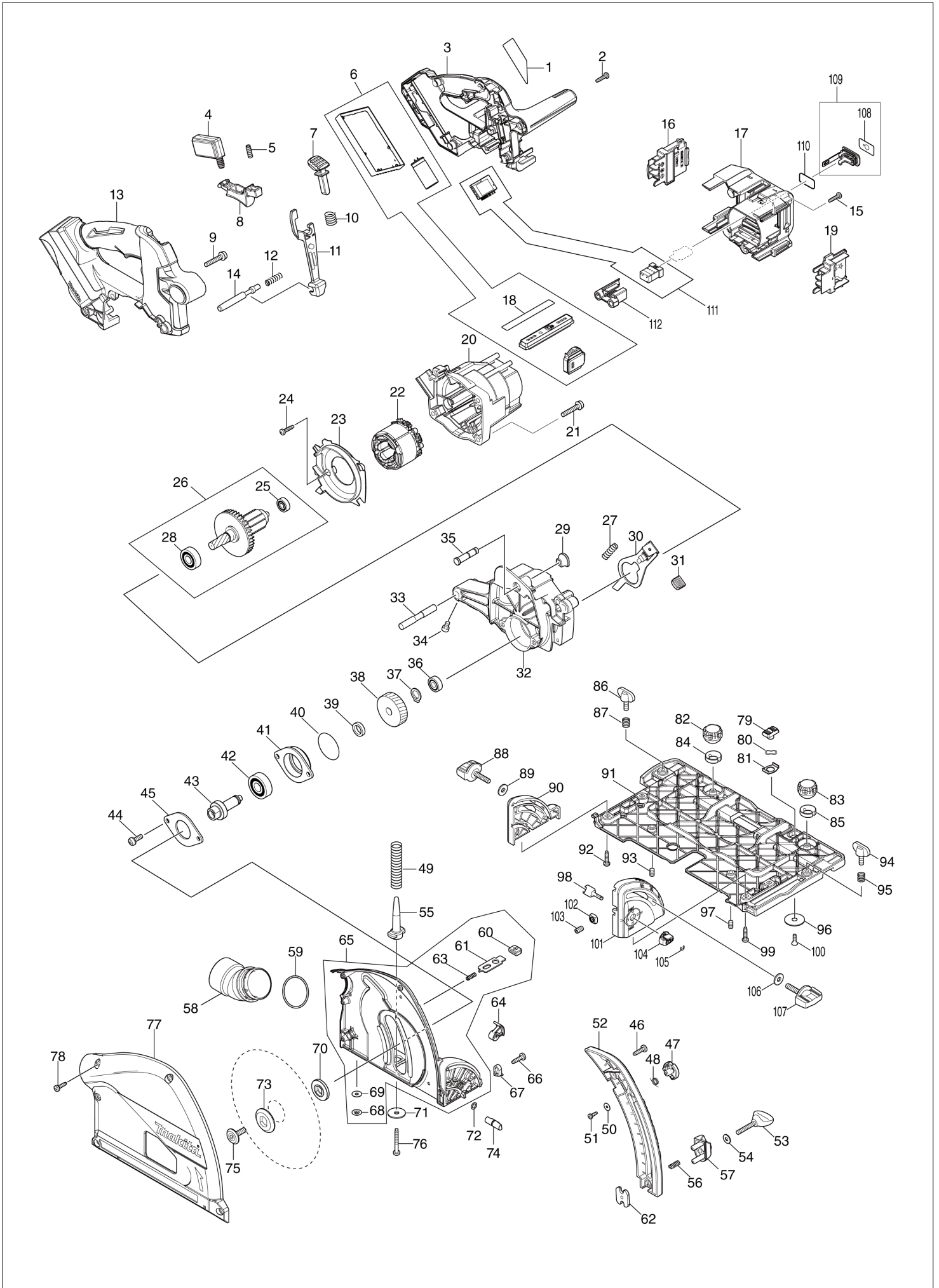
Diagram / Parts List

DSP601

165MM CORDLESS PLUNGE CUT SAW



(TH) DSP601 / 165MM CORDLESS PLUNGE CUT SAW



| | |
|-----------|-----------------|
| TH | THAILAND |
|-----------|-----------------|

DSP601 / 165MM CORDLESS PLUNGE CUT SAW

| Item | Sub | Parts No. | Parts Description | Qty | I/C | E/C No. | Close No. | Remark |
|--------|-----|-----------|-----------------------------|-----|-----|---------|-----------|--------|
| 001 | | 853V15-6 | DSP601 NAME PLATE | 1 | | | | |
| 002 | | 265995-6 | TAPPING SCREW 4X18 | 8 | | | | |
| 003 | | 183H79-5 | HANDLE REAR COVER SET | 1 | | | | |
| | C10 | 263005-3 | RUBBER PIN 6 | 4 | | | | |
| | D10 | | INC. 13,17 | | | | | |
| 004 | | 651083-9 | SWITCH C3XA-1PSPM | 1 | | | | |
| 005 | | 234173-9 | COMPRESSION SPRING 4 | 1 | | | | |
| 006A | | 135915-3 | CONTROLLER ASS'Y | 1 | | | C2064 | |
| | C10 | 620691-7 | SUB CONTROLLER | 1 | | | C2064 | |
| | D10 | | INC. 18 | | | | C2064 | |
| 006-1A | | 135974-7 | CONTROLLER ASSY | 1 | < | C2064 | | |
| | C10 | 620691-7 | SUB CONTROLLER | 1 | | C2064 | | |
| | D10 | | INC. 18 | | | C2064 | | |
| 006-1B | | 135974-7 | CONTROLLER ASSY | 1 | | | | |
| | C10 | 620691-7 | SUB CONTROLLER | 1 | | | | |
| | D10 | | INC. 18 | | | | | |
| 007 | | 419629-5 | LOCK OFF BUTTON | 1 | | | | |
| 008 | | 457748-9 | SWITCH LEVER | 1 | | | | |
| 009 | | 911253-5 | PAN HEAD SCREW M5X30 | 2 | | | | |
| 010 | | 233089-5 | COMPRESSION SPRING 12 | 1 | | | | |
| 011 | | 457749-7 | LOCK PLATE | 1 | | | | |
| 012 | | 233267-7 | COMPRESSION SPRING 7 | 1 | | | | |
| 013 | | 183H79-5 | HANDLE REAR COVER SET | 1 | | | | |
| | C10 | 263005-3 | RUBBER PIN 6 | 4 | | | | |
| | D10 | | INC. 3,17 | | | | | |
| 014 | | 324709-3 | LOCK PIN 8 | 1 | | | | |
| 015 | | 265995-6 | TAPPING SCREW 4X18 | 5 | | | | |
| 016 | | 643874-2 | TERMINAL | 1 | | | | |
| 017 | | 183H79-5 | HANDLE REAR COVER SET | 1 | | | | |
| | C10 | 263005-3 | RUBBER PIN 6 | 4 | | | | |
| | D10 | | INC. 3,13 | | | | | |
| 018 | | 813D03-7 | INDICATION LABEL | 1 | | | | |
| 019 | | 643874-2 | TERMINAL | 1 | | | | |
| 020 | | 457750-2 | MOTOR HOUSING | 1 | | | | |
| 021 | | 911253-5 | PAN HEAD SCREW M5X30 | 4 | | | | |
| 022 | | 629275-8 | STATOR | 1 | | | | |
| 023 | | 457751-0 | BAFFLE PLATE | 1 | | | | |
| 024 | | 265995-6 | TAPPING SCREW 4X18 | 2 | | | | |
| 025 | | 210022-4 | BALL BEARING 626DDW | 1 | | | | |
| 026 | | 519448-0 | ROTOR ASSY | 1 | | | | |
| | D10 | | INC. 25,28 | | | | | |
| 027 | | 233084-5 | COMPRESSION SPRING 6 | 1 | | | | |
| 028 | | 211131-2 | BALL BEARING 6001DDW | 1 | | | | |
| 029 | | 286040-4 | CAP | 1 | | | | |
| 030 | | 345742-2 | SHAFT LOCK | 1 | | | | |
| 031 | | 286039-9 | CAP | 1 | | | | |
| 032 | | 144586-5 | GEAR HOUSING COMPLETE | 1 | | | | |
| | C10 | 263002-9 | RUBBER PIN 4 | 1 | | | | |
| 033A | | 326960-1 | PIN 8 | 1 | | | C0221 | |
| 033-1A | | 324716-6 | PIN 8 | 1 | < | C0221 | | |
| 033-1B | | 324716-6 | PIN 8 | 1 | | | | |
| 034 | | 265907-9 | HEX. SOCKET HEAD BOLT M5X10 | 1 | | | | |
| 035 | | 324708-5 | STOPPER PIN 8 | 1 | | | | |
| 036 | | 211021-9 | BALL BEARING 607LLB | 1 | | | | |
| 037 | | 961052-5 | RETAINING RING S-12 | 1 | | | | |
| 038 | | 221548-1 | HELICAL GEAR 41 | 1 | | | | |
| 039 | | 257010-0 | RING 12 | 1 | | | | |
| 040 | | 213512-6 | O RING 39 | 1 | | | | |
| 041 | | 318088-9 | BEARING BOX | 1 | | | | |
| 042 | | 211129-9 | BALL BEARING 6201DDW | 1 | | | | |
| 043 | | 324707-7 | SPINDLE | 1 | | | | |
| 044 | | 911221-8 | PAN HEAD SCREW M5X16 | 2 | | | | |
| 045 | | 285689-7 | BEARING RETAINER 55 | 1 | | | | |
| 046 | | 266034-5 | TAPPING SCREW CT 4X16 | 2 | | | | |
| 047 | | 419630-0 | LOCK LEVER | 1 | | | | |

A:DSP601ZU(N)
B:DSP601Z(N)

Interchange
O : Yes
X : No
< : the new part can be substituted for the current.
> : the current part can be substituted for the new.
S : Interchangeable as a set.

| | |
|----|----------|
| TH | THAILAND |
|----|----------|

DSP601 / 165MM CORDLESS PLUNGE CUT SAW

| Item | Sub | Parts No. | Parts Description | Qty | I/C | E/C No. | Close No. | Remark |
|--------|-----|-----------|-------------------------------|-----|-----|---------|-----------|--------|
| 048 | | 231665-9 | TORSION SPRING 7 | 1 | | | | |
| 049 | | 233479-2 | COMPRESSION SPRING 11 | 1 | | | | |
| 050 | | 253821-1 | FLAT WASHER 3 | 1 | | | | |
| 051 | | 266007-8 | TAPPING SCREW BIND PT 3X10 | 1 | | | | |
| 052 | | 457756-0 | DEPTH GUIDE | 1 | | | | |
| 053 | | 251867-1 | THUMB SCREW M5X30 | 1 | | | | |
| 054 | | 941101-4 | FLAT WASHER 5 | 1 | | | | |
| 055 | | 419624-5 | SPRING HOLDER | 1 | | | | |
| 056 | | 231372-4 | COMPRESSION SPRING 5 | 1 | | | | |
| 057 | | 419623-7 | STOPPER BLOCK | 1 | | | | |
| 058 | | 457752-8 | DUST NOZZLE | 1 | | | | |
| 059 | | 213460-9 | O RING 35 | 1 | | | | |
| 060 | | 286041-2 | CAP 14 | 2 | | | | |
| 061 | | 345747-2 | SPACER PLATE | 2 | | | | |
| 062 | | 345744-8 | NUT PLATE | 1 | | | | |
| 063 | | 233025-1 | COMPRESSION SPRING 2 | 2 | | | | |
| 064 | | 144867-7 | LEVER 20 COMPLETE | 1 | | | | |
| | C10 | 263002-9 | RUBBER PIN 4 | 1 | | | | |
| 065A | | 144868-5 | BLADE CASE COMPLETE | 1 | | | C2424 | |
| | D10 | | INC. 60,61,63,68,69 | | | | C2424 | |
| 065-1A | | 140D56-6 | BLADE CASE COMPLETE | 1 | O | C2424 | | |
| | D10 | | INC. 60,61,63,68,69 | | | C2424 | | |
| 065-1B | | 140D56-6 | BLADE CASE COMPLETE | 1 | | | | |
| | D10 | | INC. 60,61,63,68,69 | | | | | |
| 066 | | 266034-5 | TAPPING SCREW CT 4X16 | 1 | | | | |
| 067 | | 419632-6 | POSITION PLATE | 1 | | | | |
| 068 | | 259008-3 | PUSH NUT 4 | 2 | | | | |
| 069A | | 253874-0 | FLAT WASHER 4 | 2 | | | C2424 | |
| 069-1A | | 347392-9 | PLATE | 2 | O | C2424 | | |
| 069-1B | | 347392-9 | PLATE | 2 | | | | |
| 070 | | 224593-5 | INNER FLANGE 35 | 1 | | | | |
| 071 | | 253010-8 | FLAT WASHER 6 | 1 | | | | |
| 072 | | 213021-5 | O RING 5 | 1 | | | | |
| 073 | | 224409-4 | OUTER FLANGE 35 | 1 | | | | |
| 074 | | 324710-8 | PIN 8 | 1 | | | | |
| 075 | | 266403-0 | HEX. SOCKET HEAD BOLT M6 | 1 | | | | |
| 076 | | 266053-1 | TAPPING SCREW 4X35 | 1 | | | | |
| 077A | | 319605-8 | BLADE CASE COVER | 1 | | | C1804 | |
| 077-1A | | 319702-0 | BLADE CASE COVER | 1 | S | C1804 | | |
| 077-1B | | 319702-0 | BLADE CASE COVER | 1 | | | | |
| 078 | | 266034-5 | TAPPING SCREW CT 4X16 | 5 | | | | |
| 079 | | 458092-7 | SLIDE LEVER | 1 | | | | |
| 080 | | 253932-2 | WAVE WASHER 10 | 1 | | | | |
| 081 | | 345977-5 | PLATE | 1 | | | | |
| 082 | | 265775-0 | THUMB SCREW M4X3 | 1 | | | | |
| 083 | | 265775-0 | THUMB SCREW M4X3 | 1 | | | | |
| 084 | | 419627-9 | HOLDER | 1 | | | | |
| 085 | | 419627-9 | HOLDER | 1 | | | | |
| 086 | | 265701-9 | THUMB SCREW M6X14 | 1 | | | | |
| 087 | | 231316-4 | COMPRESSION SPRING 7 | 1 | | | | |
| 088 | | 265776-8 | THUMB SCREW M6X26 | 1 | | | | |
| 089 | | 253111-2 | FLAT WASHER 6 | 1 | | | | |
| 090 | | 419596-4 | REAR ANGULAR GUIDE | 1 | | | | |
| 091 | | 319604-0 | BASE | 1 | | | DA522 | |
| 091-1 | | 312B95-6 | BASE | 1 | S | DA522 | | |
| 092 | | 265995-6 | TAPPING SCREW 4X18 | 2 | | | | |
| 093 | | 266225-8 | H.S.SET SCREW(FLAT POINT)M6X8 | 1 | | | | |
| 094 | | 265701-9 | THUMB SCREW M6X14 | 1 | | | | |
| 095 | | 231316-4 | COMPRESSION SPRING 7 | 1 | | | | |
| 096 | | 345748-0 | LOCK WASHER | 1 | | | | |
| 097 | | 266225-8 | H.S.SET SCREW(FLAT POINT)M6X8 | 1 | | | | |
| 098 | | 324731-0 | STOPPER PIN | 1 | | | | |
| 099 | | 265995-6 | TAPPING SCREW 4X18 | 2 | | | | |
| 100 | | 912112-6 | COUNTERSUNK HEAD SCREW M4X10 | 1 | | | | |
| 101 | | 419595-6 | FRONT ANGULAR GUIDE | 1 | | | DA522 | |

A:DSP601ZU(N)
B:DSP601Z(N)

Interchange
O : Yes
X : No
< : the new part can be substituted for the current.
> : the current part can be substituted for the new.
S : Interchangeable as a set.

