



TH	THAILAND
----	----------

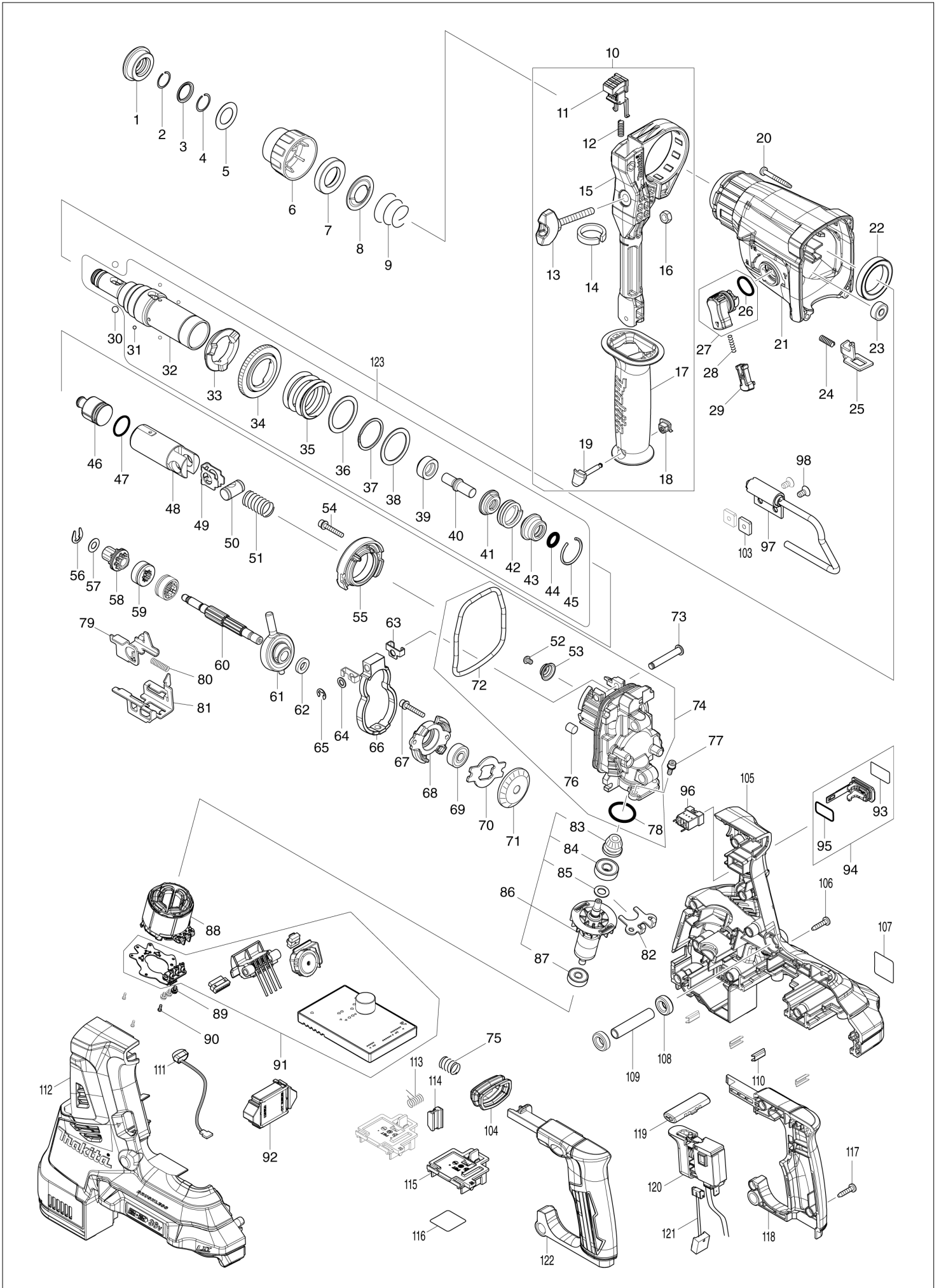
Diagram / Parts List

DHR282

28MM CRDLS COMBINATION HAMMER



(TH) DHR282 / 28MM CRDLS COMBINATION HAMMER



TH	THAILAND
----	----------

DHR282 / 28MM CRDLS COMBINATION HAMMER

Item	Sub	Parts No.	Parts Description	Qty	I/C	E/C No.	Close No.	Remark
001		286288-8	CAP 35	1				
002		233989-9	RING SPRING 14	1				
003		346834-0	WASHER 16	1				
004		233992-0	RING SPRING 15	1				
005		267114-0	FLAT WASHER 17	1				
006		455393-4	CHUCK COVER	1				
007		325813-1	RING 21	1				
008		346177-0	GUIDE WASHER	1				
009		233916-6	CONICAL COMP. SPRING 21-29	1				
010		126882-3	GRIP ASSEMBLY	1				
	D10		INC. 11-19					
011		144959-2	LOCK BUTTON COMPLETE	1				
012		233360-7	COMPRESSION SPRING 4	1				
013		265625-9	THUMB SCREW M6X50	1				
014		422258-5	SPONGE SHEET	1				
015		458355-1	SIDE HANDLE BASE	1				
016		931302-2	HEX. NUT M6	1				
017		458357-7	GRIP 36	1				
018		422255-1	CAP	1				
019		161838-9	FIX PIN	1				
020		266351-3	TAPPING SCREW 4X35	4				
021		144965-7	GEAR HOUSING COMPLETE	1				
	C10	213345-9	OIL SEAL 25	1				
	C20	331890-3	CUP SLEEVE	1				
022		211294-4	BALL BEARING 6806LLU	1				
023		211012-0	BALL BEARING 606ZZ	1				
024		233360-7	COMPRESSION SPRING 4	1				
025		347228-2	LOCK PLATE	1				
026		213278-8	O RING 17	1				
027		135961-6	CHANGE LEVER ASSY	1				
	D10		INC. 26					
028		234264-6	COMPRESSION SPRING 3	1				
029		457709-9	LOCK BUTTON	1				
030		216022-2	STEEL BALL 7.0	2				
031		216019-1	STEEL BALL 3	4				
032		142972-4	TOOL HOLDER COMPLETE	1				
	C10	213344-1	OIL SEAL 9	1				
033		332139-4	DRIVING FLANGE	1				
034		227360-7	SPUR GEAR 51	1				
035		234148-8	COMPRESSION SPRING 31	1				
036		267153-0	FLAT WASHER 30	1				
037		257932-4	SPIRO LOCK WASHER 30	1				
038		267153-0	FLAT WASHER 30	1				
039		325783-4	SLEEVE 9B	1				
040		325789-2	IMPACT BOLT A	1				
041		325792-3	WASHER 10	1				
042		234149-6	COMPRESSION SPRING 20	1				
043		325793-1	O-RING CASE B	1				
044		213073-6	O RING 9	1				
045		233979-2	RING SPRING 28	1				
046		325784-2	STRIKER	1				
047		213258-4	O RING 17.5	1				
048		327079-9	PISTON CYLINDER	1				
049		346036-8	GUIDE PLATE	1				
050		324215-8	PISTON JOINT	1				
051		232449-8	COMPRESSION SPRING 14	1				
052		265627-5	H.S.BUTTON HEAD BOLT M4X6	1				
053		347344-0	SPRING GUIDE	1				
054		922148-7	HEX. SOCKET HEAD BOLT M4X25	2				
055		144960-7	INNER SUPPORT COMPLETE	1				
056		257336-0	STOP RING EXT U-6	1				
057		253186-1	FLAT WASHER 7	1				
058		226170-9	SPUR GEAR 10	1				
059		332125-5	CLUTCH CAM	2				
060		327078-1	CAM SHAFT	1				

A:DHR282ZU(N)
 B:DHR282T2JU(H)
 C:DHR282Z(N)
 D:DHR282PT2J(H)

Interchange
 O : Yes
 X : No
 < : the new part can be substituted for the current.
 > : the current part can be substituted for the new.
 S : Interchangeable as a set.

TH	THAILAND
-----------	-----------------

DHR282 / 28MM CRDLS COMBINATION HAMMER

Item	Sub	Parts No.	Parts Description	Qty	I/C	E/C No.	Close No.	Remark
061		219030-2	SWASH BEARING 10	1				
062		257321-3	RING 8	1				
063		346538-4	WEIGHT HOLDER GUIDE	2				
064		253077-6	FLAT WASHER 6	1				
065		961018-5	STOP RING E-5	1				
066		310869-7	COUNTER WEIGHT	1				
067		922148-7	HEX. SOCKET HEAD BOLT M4X25	2				
068		319674-9	BEARING BOX	1				
069		211032-4	BALL BEARING 608ZZ	1				
070		347343-2	BEARING RETAINER B	1				
071		221599-4	SPIRAL BEVEL GEAR 32	1				
072		213850-6	O-RING 74	1				
073		256536-9	FLAT FILLISTER HD PIN 6	1				
074		135962-4	INNER HOUSING ASSY	1				
	D10		INC. 52,53,72,76,78					
075		232436-7	COMPRESSION SPRING 10	1				
076		443153-6	FELT	1				
077		922118-6	HEX. SOCKET HEAD BOLT M4X12	2				
078		213008-7	O RING 22.4	1				
079		347230-5	CHANGE PLATE B	1				
080		234343-0	COMPRESSION SPRING 5	1				
081		347229-0	CHANGE PLATE A	1				
082		346536-8	BEARING RETAINER A	1				
083		144964-9	SPIRAL BEVEL GEAR 11 COMPLETE	1				
084		210024-0	BALL BEARING 608LLU	1				
085		253835-0	FLAT WASHER 8	1				
086		519513-5	ROTOR ASSY	1				
	D10		INC. 83-85,87					
087		210022-4	BALL BEARING 626DDW	1				
088		629340-3	STATOR	1				
089		652069-6	FLAT HEAD SCREW M3X6	3				
090		266490-9	TAPPING SCREW PT 2X6	3				
091		620814-7	CONTROLLER	1				
092		620816-3	ACCELEROMETER CIRCUIT	1			C4041	
092-1		620816-3	ACCELEROMETER CIRCUIT	1	S	C4041		
093		813T75-8	CAP LABEL	1			C3942	
093-1		818H48-4	CAP LABEL	1	<	C3942		
094A		183H92-3	CAP SET	1			C2104	
	D10		INC. 93,95				C2104	
094B		183H92-3	CAP SET	1			C2104	
	D10		INC. 93,95				C2104	
094C		183J85-2	CAP SET	1			C3942	
094D		183J85-2	CAP SET	1			C3942	
094-1A		183J85-2	CAP SET	1	O	C2104	C3942	
	D10		INC. 93,95			C2104	C3942	
094-1B		183J85-2	CAP SET	1	O	C2104	C3942	
	D10		INC. 93,95			C2104	C3942	
094-1C		140G30-2	CAP COMPLETE	1	<	C3942		
094-1D		140G30-2	CAP COMPLETE	1	<	C3942		
094-2A		140G30-2	CAP COMPLETE	1	<	C3942		
	D10		INC. 93,95			C3942		
094-2B		140G30-2	CAP COMPLETE	1	<	C3942		
	D10		INC. 93,95			C3942		
095A		213275-4	O RING 18	1			C2104	
095B		213275-4	O RING 18	1			C2104	
095C		213218-6	O RING 16	1			DA223	
095D		213218-6	O RING 16	1			DA223	
095-1A		213218-6	O RING 16	1	<	C2104	DA223	
095-1B		213218-6	O RING 16	1	<	C2104	DA223	
095-1C		213A05-9	O-RING16	1	O	DA223		
095-1D		213A05-9	O-RING16	1	O	DA223		
095-2A		213A05-9	O-RING16	1	O	DA223		
095-2B		213A05-9	O-RING16	1	O	DA223		
096		632L87-2	CONNECTOR UNIT	1				
097		135963-2	HOOK ASSY	1				

A:DHR282ZU(N)
 B:DHR282T2JU(H)
 C:DHR282Z(N)
 D:DHR282PT2J(H)

Interchange
 O : Yes
 X : No
 < : the new part can be substituted for the current.
 > : the current part can be substituted for the new.
 S : Interchangeable as a set.

TH	THAILAND
-----------	-----------------

DHR282 / 28MM CRDLS COMBINATION HAMMER

Item	Sub	Parts No.	Parts Description	Qty	I/C	E/C No.	Close No.	Remark
098		912207-5	COUNTERSUNK HEAD SCREW M5X10	2				
103		264002-2	SQUARE NUT M5	2				
104		422257-7	BELLOWS	1				
105		183J30-7	HOUSING SET	1			C4041	
	C10	263005-3	RUBBER PIN 6	8			C4041	
	D10		INC. 112				C4041	
105-1		183K53-1	HOUSING SET	1	<	C4041		
	C10	263005-3	RUBBER PIN 6	8		C4041		
	D10		INC. 112			C4041		
106		266326-2	TAPPING SCREW 4X18	9				
107		854J30-1	DHR282 NAME PLATE	1				
108		422256-9	RUBBER RING 10	2				
109		257438-2	SLEEVE 10	1				
110		346783-1	PLATE	4				
111		620549-0	LED CIRCUIT	1				
112		183J30-7	HOUSING SET	1			C4041	
	C10	263005-3	RUBBER PIN 6	8			C4041	
	D10		INC. 105				C4041	
112-1		183K53-1	HOUSING SET	1	<	C4041		
	C10	263005-3	RUBBER PIN 6	8		C4041		
	D10		INC. 105			C4041		
113		233598-4	TORSION SPRING 6	1				
114		313226-8	OPENER	1				
115		644809-6	TERMINAL	2				
116		854J37-7	DHR282 SERIAL NO. LABEL	1				
117		266326-2	TAPPING SCREW 4X18	4				
118		183J29-2	HANDLE SET	1				
	D10		INC. 122					
119		453124-5	F/R CHANGE LEVER	1				
120		651366-7	SWITCH C3JW-6B-24	1				
121		632L95-3	LEAD UNIT	1				
122		183J29-2	HANDLE SET	1				
	D10		INC.118					
123		135966-6	TOOL HOLDER ASSY	1				
	D10		INC. 31-45					
A01A		198901-5	WIRELESS UNIT SET	1		Y07670	C3819	
A01B		198901-5	WIRELESS UNIT SET	1		Y07670	C3819	
A01-1A		199393-1	WIRELESS UNIT SET	1	<	C3819	D4357	
A01-1B		199393-1	WIRELESS UNIT SET	1	<	C3819	D4357	
A01-2A		199393-1	WIRELESS UNIT SET	1	<	D4357	DB384	
A01-2B		199393-1	WIRELESS UNIT SET	1	<	D4357	DB384	
A01-3A		199393-1	WIRELESS UNIT SET	1	<	DB384		
A01-3B		199393-1	WIRELESS UNIT SET	1	<	DB384		
A02		194683-7	GREASE VESSEL SET	1				
A04		331886-4	DEPTH GAUGE	1				
A05		443122-7	CLOTH	1				
A06B		195171-7	DUSTCUP SET	1			C4729	
A06D		195171-7	DUSTCUP SET	1			C4729	
A06-1B		195173-3	DUSTCUP SET	1	O	C4729		
A06-1D		195173-3	DUSTCUP SET	1	O	C4729		
A09B		***DC18RD	DC18RD TWO PORT FAST CHARGER	1				
	D10		COMPO-PARTS					
A09D		***DC18RD	DC18RD TWO PORT FAST CHARGER	1				
	D10		COMPO-PARTS					
A10B		197280-8	BATTERY BL1850B SET	2			C2803	
A10D		197280-8	BATTERY BL1850B SET	2			C2803	
A10-1B		199282-0	BATTERY BL1850B SET	2	<	C2803	D0161	
A10-1D		199282-0	BATTERY BL1850B SET	2	<	C2803	D0161	
A10-2B		199282-0	BATTERY BL1850B SET	2	<	D0161		
A10-2D		199282-0	BATTERY BL1850B SET	2	<	D0161		
A11B		839559-8	INNER TRAY	1				
A11D		839559-8	INNER TRAY	1				
A12B		821552-6	CONNECTOR PLASTIC CASE (TYPE4)	1				
	C10	453974-8	LATCH	4				
A12D		821552-6	CONNECTOR PLASTIC CASE (TYPE4)	1				

A:DHR282ZU(N)
 B:DHR282TJU(H)
 C:DHR282Z(N)
 D:DHR282PTJ(H)

Interchange
 O : Yes
 X : No
 < : the new part can be substituted for the current.
 > : the current part can be substituted for the new.
 S : Interchangeable as a set.

