



# Cordless Kettle DKT360



# Hot Water, Anytime Anywhere



**18v + 18v → 36v**

Powered by two 18V LXT batteries



**Easy to carry around**



Kettle can be transferred easily on Power supply stand by holding the carrying handle of the stand.

**Dual layer structure**



Stainless steel interior plus plastic exterior\* provides high heat retention while keeping Kettle surface cool  
\*There is an insulating layer of air between the interior and exterior layers.

**Removable**



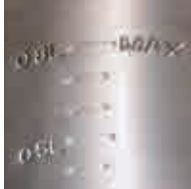
Removable filter for filtering dust, lime scale and more  
Removable for easy water supply and cleaning

**Anti-spill lock button**



Provided to minimize spilling of hot water even if Kettle falls over.

**Easy to read water scale**



**Kettle can be turned on only when grounded.**



**Dual battery fuel gauges**



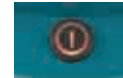
- Auto shut-off after boiling
- Boil-dry protection

Water tank capacity  
**0.8 L**

Boiling time (23°C) (approx.)  
**8 min**

Battery BL1850B x2 capacity of boiling water (23°C) (approx.)  
**1.4 L**

Power switch



**Line up**

**Cordless Coffee Maker**  
DCM501

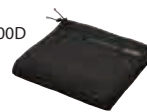


**Cordless Heated Jacket**  
DCJ205 / CJ105D  
DCJ206 / CJ106D



**Cordless Heated Vest**  
DCV202 / CV102D

**Cordless Heated Blanket**  
DCB200 / CB100D



**Cordless Cooler & Warmer Box**  
CW001G / DCW180



**Accessories**

**Cup**  
Part No. KF0000020  
Capacity: 240mL



**Charging Time**

	Fast Charging		
	DC18RC	DC18RD	DC18SD
BL1815N 1.5Ah	15 min		30 min
BL1820B 2.0Ah	24 min		45 min
BL1830B 3.0Ah	22 min		60 min
BL1840B 4.0Ah	36 min		90 min
BL1850B 5.0Ah	45 min		110 min
BL1860B 6.0Ah	55 min		130 min

**Cordless Kettle DKT360**

Boiling time (approx. / min)	8 (0.8L water from 23 °C)
Water tank capacity	0.8 L
Dimensions (L x W x H)	Kettle on Power supply stand: 233 x 263 x 307 mm (9-1/8 x 10-3/8 x 12-1/8")
Net weight	2.7 - 3.4 kg (6.0 - 7.5 lbs.)

Approx amount of hot water for making drinks/foods	Boiling time (approx.) of 0.8L water			
	Starting water temperature	10°C	23°C	40°C
Instant/drip coffee	0.2 L			
Instant cup soup	0.15-0.23 L			
Instant cup noodles	0.3-0.5 L			
	Boiling time	9 min	8 min	6 min

not covered by EPTA-Procedure  
Items of standard equipment and specifications may vary by country or area.

Makita Corporation

3-11-8 Sumiyoshi-cho, Anjo, Aichi, 446-8502 Japan

PRINTED IN JAPAN 202110